

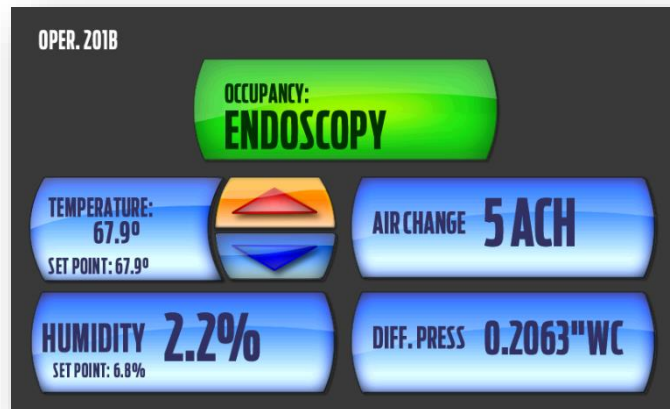
# CRC-MV

## MultiVIEW Monitor

Rev 5.1

### FEATURES:

- Bright/sunlight readable 7.0" LCD touch screen.
- Displays large, easy to read values, set points, room status, modes and alarms
- Up to six fully configurable icons including:
  - Environmental points
  - Point or room status
  - Point or room mode
- Display point values, set points, point status or space mode
- Local and remote audible and visual alarms
- Local set point, status and mode change
- Analog and digital input and outputs for point values, modes or status indicator
- Network for values, modes or status points
- Password protection and configurable user access restrictions
- Set point, status and mode networked or hardwired
- All parameters/settings saved in non/volatile memory
- Field configurable, easy, and intuitive menus.
- Easy and quick installation
- Input and output diagnostic screen
- Network communication debug screen



### OVERVIEW:

The MultiVIEW is an advanced 7" LCD touchscreen display that is designed to be configured for any monitoring or sequencing application. Its core function is to give local access to critical information in an easy to read display. It's versatile design allows any of its on-board analog, digital inputs, or network connections to drive the information being displayed on the screen. Additionally, any of the on-board analog outputs or relays can be setup to drive a signal out to a BAS or peripheral device such as a valve or VFD.

The MultiVIEW supports up to six (6) fully configurable graphical icons. The six graphical icons allow the facility user to view and/or make changes to point values, modes, status, set points, and alarms.

The icons can be independently configured to retrieve their value from an analog input (0-5v, 0-10v, 4-20mA), digital input, or network communication.

To support virtually any sequencing scenario, the four on-board analog outputs and relays can also be configured to be driven by a point's alarm status, audible alarm status, current value, or set point value.

The CRC- MultiVIEW is excellently suited for any location where clear indication and user interface with critical information is required.

## DISPLAY:

---

- Description:** 7" Full color LED TFT 18 bit (262,144) color depth, sunlight viewable, 400cdm brightness, touch screen interface - resistive touch (will work with gloved finger). Screen is capable of wipe down cleaning and water spray and dust resistant meeting (IP-54)
- Listing:** CSA®, RU(us), UL 60950, UL 94 V-0 (Enclosure)
- Main Screen:** Display, alarm, and adjust set points for up to six environmental points
- I/O Diagnostic:** Graphical display of controller analog inputs/outputs and digital inputs/outputs
- Mounting:** Low profile surface

## POWER REQUIREMENTS:

---

- Input Power:** 22 to 26VAC; 50/60Hz, fully isolated
- Power Draw:** 20 VA
- Primary:** 24 VAC Input
- Class:** Class 2 Energy Limiting, Class 130 (B) Insulation, Class 2 not wet, Class 3 wet
- Listing:** CSA (c), RU (us)  
ANSI/UL 506, 508-1, 508-2

## ENVIRONMENTAL CHARACTERISTICS:

---

### Temperature Limits:

- Storage: -40 to 180  
Operating: +0 to 160  
Compensated Range: +35 to 130

### Temperature Coefficients:

- Zero:  $\pm 0.03\%$ F.S./ F  
Span:  $\pm 0.03\%$ F.S./ F  
Listing: UL-94-5VA

## CONTROLLER I/O:

---

- Analog Inputs:** 4: 4-20mA, 0-10V, or 0-5V (software selectable)
- Analog Outputs:** 4: 0-10V or 0-5V (software selectable)
- Digital Inputs:** 4
- Relays:** 4 (normally closed - 0.5 A at 125 VAC; 2 A at 30 VDC)
- Terminals:** Removable screw terminals (18ga - 26ga wire)
- Enclosure:** Fire retardant, extruded acrylic/PVC Alloy UL94V
- Communication:** RS-485
- Onboard power:** 10vdc (80mA max.), 5vdc (80mA max.), and onboard loop power circuit 22VDC (80mA max.)

**COMMUNICATION:**

---

**Connection:** RS-485

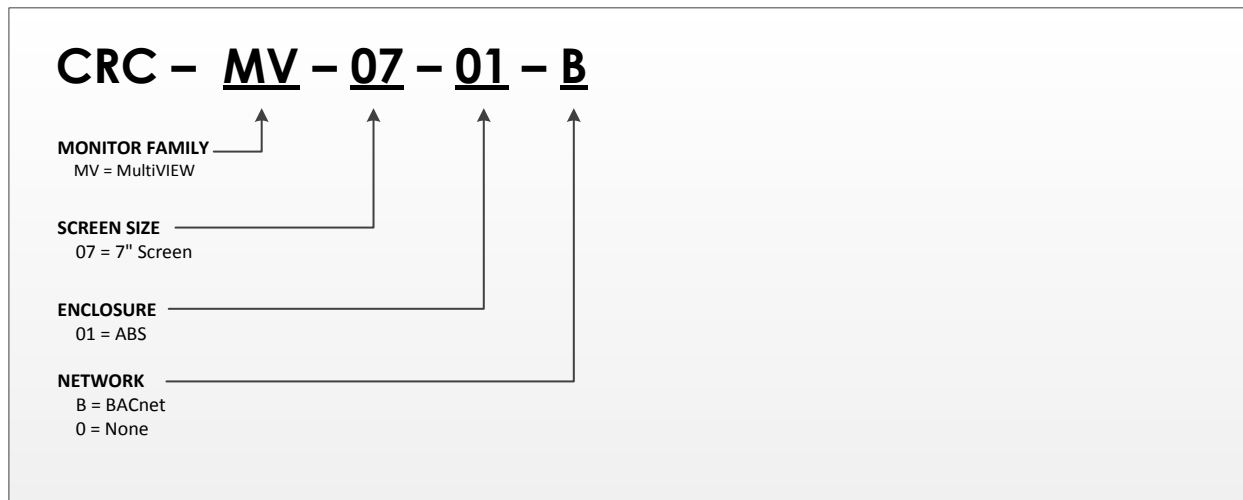
**Supported Protocol:** BACnet MS/TP, Modbus, Johnson Controls Incorporated N2, and LON with optional card

**Network Debug:** Network communication diagnostics

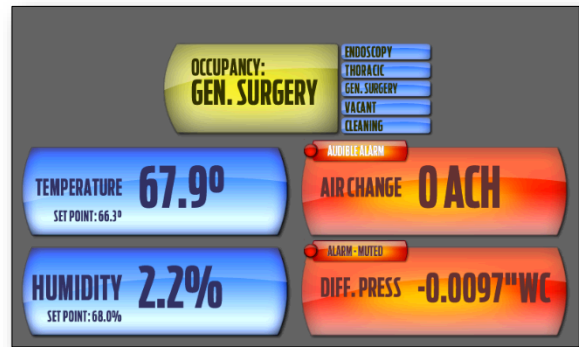
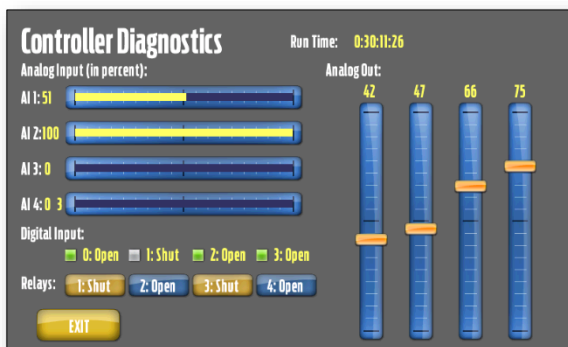
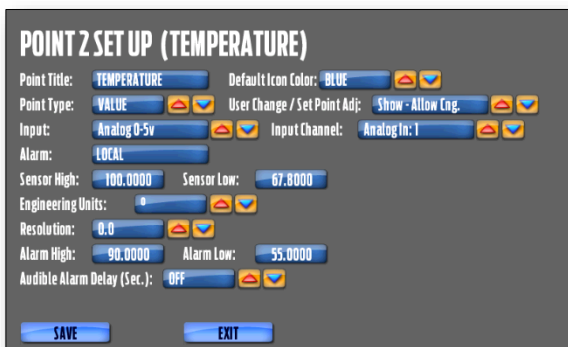
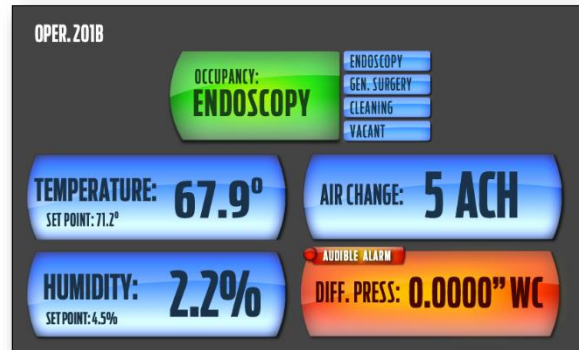
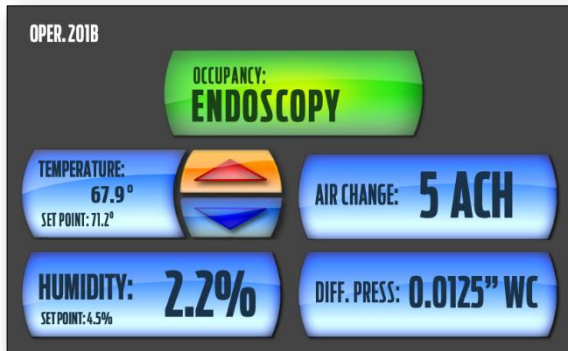
**Network Setup:** Baud rate, MAC address and Instance ID configured via touch screen

**ORDERING NOMENCLATURE:**

---



ADDITIONAL SCREENS:



ADDITIONAL PRODUCT INFORMATION:

Please contact us at:

**Web:** www.criticalroom.com  
**Phone:** 414.324.8978  
**Address:** Critical Room Control  
 6643 West Mill Road  
 Milwaukee, WI 53218