

S.W.F.L.

# Beyond the Brush

Partnership Deck

[www.BeyondTheBrush.Art](http://www.BeyondTheBrush.Art)



# What Does It Mean To Go Beyond The Brush?

Beyond The Brush is your gateway to the vibrant and thriving art scene of Southwest Florida! At Beyond The Brush, we celebrate the creativity and talent that defines our local community, showcasing the best in local artists, galleries, and art institutions. Whether you're an art lover, collector, or simply curious, our platform connects you with the heartbeat of SWFL's artistic landscape.

Explore exclusive artist interviews through our podcast series, discover upcoming art events, and browse our online gallery featuring locally crafted pieces available for purchase. Beyond The Brush is more than a website & Magazine... It's a canvas where the rich colors of our local art community come to life. Dive in and experience the art that makes Southwest Florida unique!

[www.BeyondTheBrush.Art](http://www.BeyondTheBrush.Art)





# Featured Artists

**B/B** creates a space for artists to Step into the spotlight and join our vibrant community of creatives, where their art will be celebrated by collectors, art lovers, and gallery enthusiasts. Becoming a featured artist on **Beyond The Brush** is more than just an opportunity to display their work... It's an invitation to tell Artists' story, connect with art lovers worldwide, and expand your influence in the art world. Our Platform is designed to highlight Artists' work, offering:

**Exclusive Exposure:** Artists' work is prominently displayed alongside curated collections, featured in online galleries, and shared with our global audience of art collectors and aficionados.

**Artist Interviews:** B/B gets personal with the Artist through in-depth interviews on Behind The Brush, where they can share the creative process, inspiration, and their stories behind their work.

**Art Events:** Artists' events are a part of our art events calendar, from online exhibitions to gallery showcases and live auctions. They have the chance to promote your work and engage with fellow artists, art enthusiasts, and potential buyers.

**On-Line Gallery:** Our online gallery provides a seamless platform for Artists to sell their pieces to collectors both locally and internationally, ensuring their creations find a home with those who truly appreciate them.







# Featured Galleries

**Showcasing Local Talent:** The platform is a gateway to the vibrant art scene of SWFL, celebrating local artists, galleries, and art institutions.

**Featured Galleries:** Galleries can become "Featured Galleries" on the platform, gaining global exposure to art lovers and collectors actively seeking new art spaces.

**Curated Listings:** Featured galleries benefit from curated listings that highlight their exhibitions and artists, giving them the spotlight they deserve.

**Gallery Interviews:** Beyond The Brush offers gallery interviews to share the story behind the gallery, its mission, and the artists it represents, connecting audiences with the soul of the space.

**Event Promotion:** Galleries can promote their upcoming art events and exhibitions on the platform's dedicated events calendar, reaching an audience eager to engage with art.

**Online Sales Facilitation:** The platform facilitates the online sale of art directly from featured galleries, expanding their reach and sales beyond their physical location.

**Magazine Spotlight:** The upcoming Beyond The Brush Magazine, a printed publication accompanying the website, will further highlight galleries, spotlight art events, and provide a map for art enthusiasts to locate and visit them.

**Connecting the Community:** By featuring galleries and institutions, Beyond The Brush serves as a central hub connecting art lovers, collectors, artists, and galleries across Southwest Florida.



SIDNEY & BERNE  
DAVIS  
ART CENTER



NAPLES ART  
INSTITUTE





# Art Events

**Dedicated "Upcoming Events" Section:** Beyond The Brush features a prominent "Upcoming Events" section on its website. This ensures art enthusiasts are always aware of the latest art-related activities in Southwest Florida.

**Comprehensive Calendar:** This dedicated section acts as a calendar for exhibitions, openings, and other art events happening across Punta Gorda, Port Charlotte, Fort Myers, Cape Coral, Estero, Bonita Springs, and Naples/Marco Island.

**Artist Promotion via Events:** The platform allows featured artists to be part of the art events calendar, providing them with a chance to promote their work and engage with the art community.

**Gallery Event Promotion:** Featured Galleries benefit from event promotion through the platform's dedicated events calendar. This helps boost attendance for their shows, openings, and special events by reaching an eager audience.

**Stay Updated:** Users can subscribe to stay up to date on Events & Gallery Openings.

**Podcast Mentions:** The "Behind The Brush" podcast provides a platform for artists to talk about their upcoming events, giving listeners direct insights into what's happening in the local art scene.

**Magazine Spotlight:** The upcoming Beyond The Brush Magazine will further spotlight art events, providing another avenue for promotion and awareness.

**Connecting Art Enthusiasts:** By centralizing information on upcoming events, Beyond The Brush serves as a key tool for connecting art lovers with the vibrant artistic activities taking place in the region.





# Behind The Brush

Take a deeper dive into the Art you see by going Behind The Brush with the Artist as we sit down in the studio to talk about the Local SWFL Art scene with the creators of it! Find out about where they are from, what inspires them, upcoming events and so much more...

This is where the Sound of Art comes to Life...

This is Behind The Brush!

*Behind The Brush*

*Our Guest The Week:*

*Danielle Branchaud*



*The Sound of Art*

Available On:



[www.BeyondTheBrush.Art](http://www.BeyondTheBrush.Art)

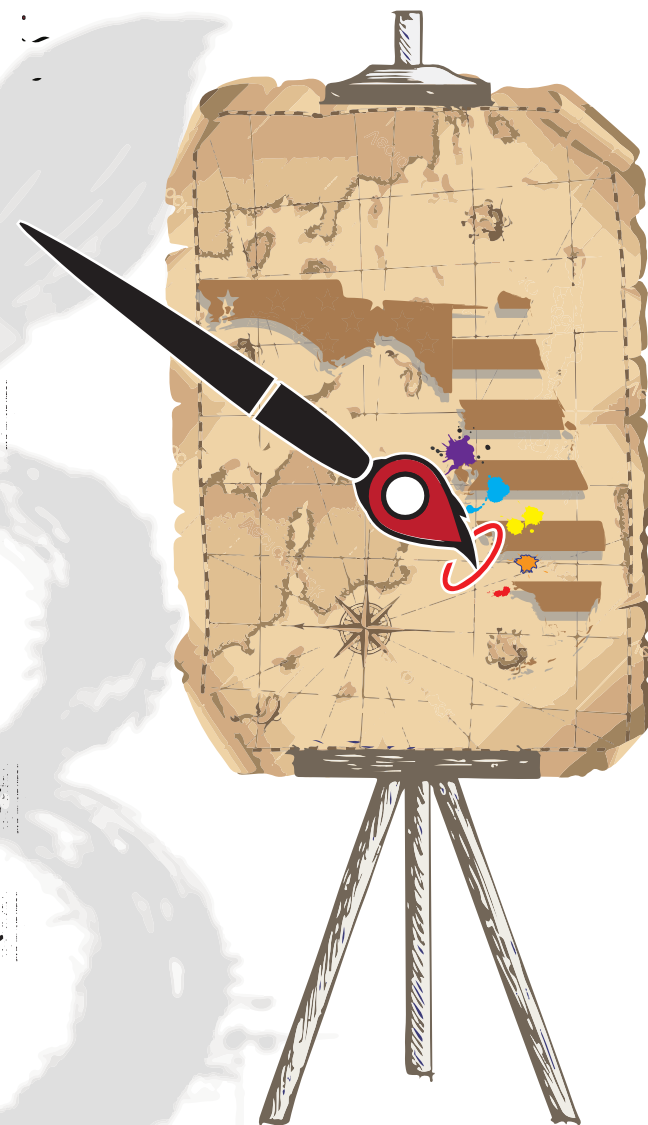




# Art Map

Beyond The Brush offers a complete map of Southwest Florida's art landscape both online and in print. Their website features a comprehensive directory of galleries organized by location across Punta Gorda, Port Charlotte, Fort Myers, Cape Coral, Estero, Bonita Springs, and Naples/Marco Island, essentially providing a virtual tour of the region's art spaces.

Complementing this online resource, the upcoming Beyond The Brush Magazine will further enhance this by including a printed map for art enthusiasts to easily locate and visit these highlighted galleries and art spots, offering a tangible guide to the vibrant SWFL art scene.



[www.BeyondTheBrush.Art](http://www.BeyondTheBrush.Art)



Beyond  
the  
Brush

Partners





# Partnership Options

## Featured Galleries

	Monthly / Annual
1/4 Page Gallery	\$75.Month / \$750.
1/2 Page Gallery	\$125.Month/ \$1,250
Full Page Institute	\$175.Month/ \$1,800

## Art Events

Full Page	\$125./Month
	\$100./Mo w/90 Day
Online & Digital ONLY	\$40./Month

## Featured Artists

1x \$45.00 Set Up Fee





# Partnership Options

## Title Sponsor of Complete Entity

(2) Non-competing categories available

~(6) Month Minimum Contract

**\$1,250.00/Month**

### Digital Media Marketing

- Monthly Email Blast (2,500 Currently)
- Social Media Tags
- Web Banner on all Pages of Site/Direct Link

### Behind The Brush Podcast

- Show Open "Brought you By"
- (2) :60 Ad spots in all shows
- Available Live interview 1 per Quarter

### Art Events

- VIP Access (1) per Month
- Table Display/10x10 display when and were accessible
- Banner Placement at exclusive Beyond The Brush Events

### Beyond The Brush Magazine

- Full Page/Back or Inside Cover
- Direct Location Spot on Art Map
- Printed copies for distribution

### Artist Involvement

- VIP access to Artist Meet & Greet
- LIVE Art Event at your location
  - o 1 per Quarter