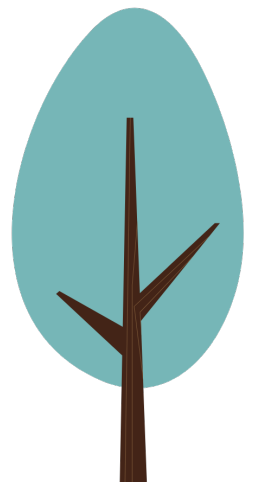
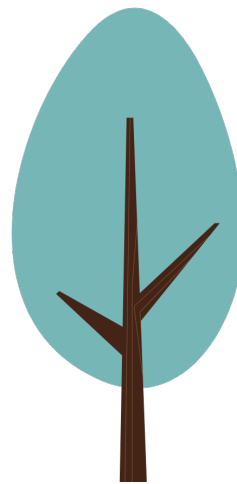
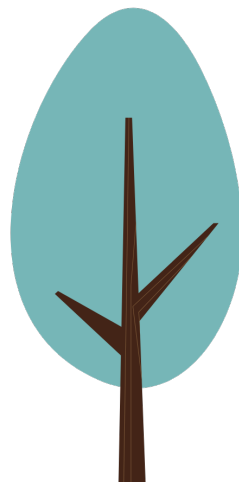


# DIGILEAF

## WHITEPAPER

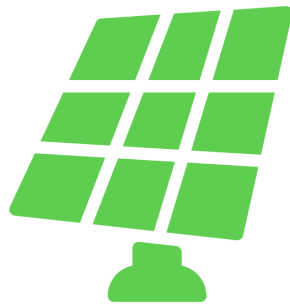


# Index

1. **Mission**
  - 1.1 Overview
  - 1.2 Proof Of Power
  - 1.3 Reducing Carbon
  - 1.4 Research
  - 1.5. Big Data
2. **Leaf Models**
  - 2.1 Personal
  - 2.2 Leafs
  - 2.4 Inverters
  - 2.5 Chargers
  - 2.6 Batteries
3. **Token Model**
4. **Licenses**
  - 4.1 Types
  - 4.2 How To's
5. **Road Map**

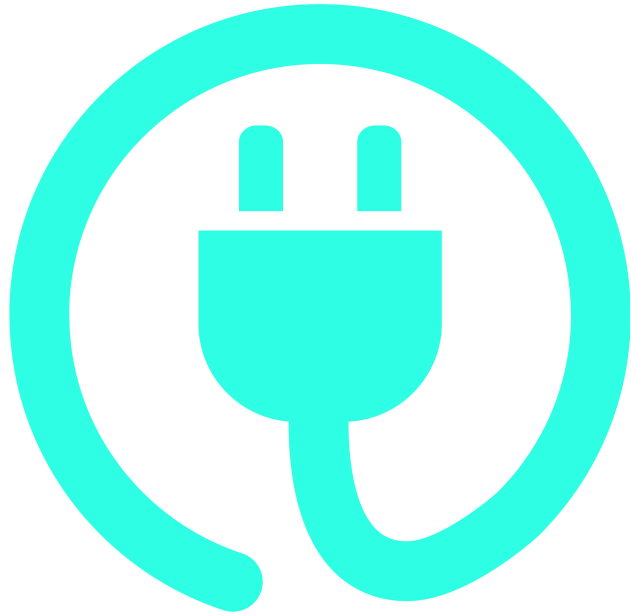
# THE MISSION

DigiLeaf is a step toward a better Planet. Decouple from the Power Company and sell your own Power



A DigiLeaf is a Solar Panel linked to the Algorand Blockchain, which supports the World in a few ways. One as per reducing one's carbon footprint. The second is building a network of power for decentralized use cases and a use for research for commercial and big data to improve technology.

# LEAFS



## DIGILEAF

DigiLeaf hardware earns Rewards for supporting a Greener Earth. DigiLeaf tokens called “Leaf\$” may be used to upgrade your own solar array, to buy data and to purchase electricity.

# Proof of Power

Proof of Power come in Three Fronts

## Front One

True Decentralization

Consumer application to truly decentralized life. DigiLeafs are intended to allow consumers freedom from power constraints. On the go, users can effectively charge devices to help maintain a sustainable world. Miners can use DigiLeaf for a truly decentralized setup for applications like Helium, PlanetWatch, and others.

## Front Two

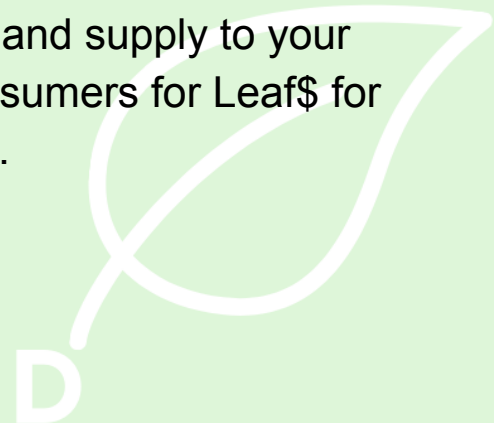
United Peoples Power

Commercial applications create power independents. Users will be able to sell power back to the power companies as UPP and help regulate power prices by creating a alternative to the current monopoly.

## Front Three

LeafShare

Charge your own prices for the electricity you create and supply to your local area. Tree Stations allow for sale of power to consumers for Leaf\$ for personal electric and fleet vehicles.



# REDUCING CARBON

Cryptocurrency can use a lot of power. Digileafs solution is to change that. By being the first crypto currency with a Negative Carbon Footprint, DigiLeaf has solutions for all situations.

## **Miners**

DigiLeaf offers True Decentralization with each miner. Use the Bee for Mobile Applications and small Portable set ups. Use the Branch for Off-Grid setups and the Home Leaf to decouple from the power companies increasing prices. Upgrade your array with Leaf\$ that you earn with your panels. Compound your electrical offset with your Leaf\$ for a passive self sustaining system.

## **Home**

DigiLeaf Home Solar will can take any home off grid.

With DigiLeaf Home owners can cut their costs by creating your own electricity, earning Leaf\$ for doing so. Home owners often meet government rebates requirements and can build their array for up to 30% off.

## **Commercial**

Make your building itself profitable with Banana DigiLeafs! Cut your businesses overhead with DigiLeafs solar. Banana Leafs Technical Data Sheet will be coming soon.



# RESEARCH AND DEVELOPMENT

Develop advanced technology for sale only with Leaf\$.

## **Solar**

New cutting edge solar devices. Bee and Branch are now available for order. Home, Banana and Project TS are currently under development. New devices will be released following.

## **Infrastructure**

Tree Stations (Solar Car Charging Stations) to be placed world wide for consumer use. Fast charging





# BIG DATA

The world runs on data. DigiLeaf Solar and Power Usage  
will be Zero Identity Cataloged.

## **Good Hearted Research**

Free data grants to groups such as schools, low income  
areas and developing Countries

## **For Profit Companies**

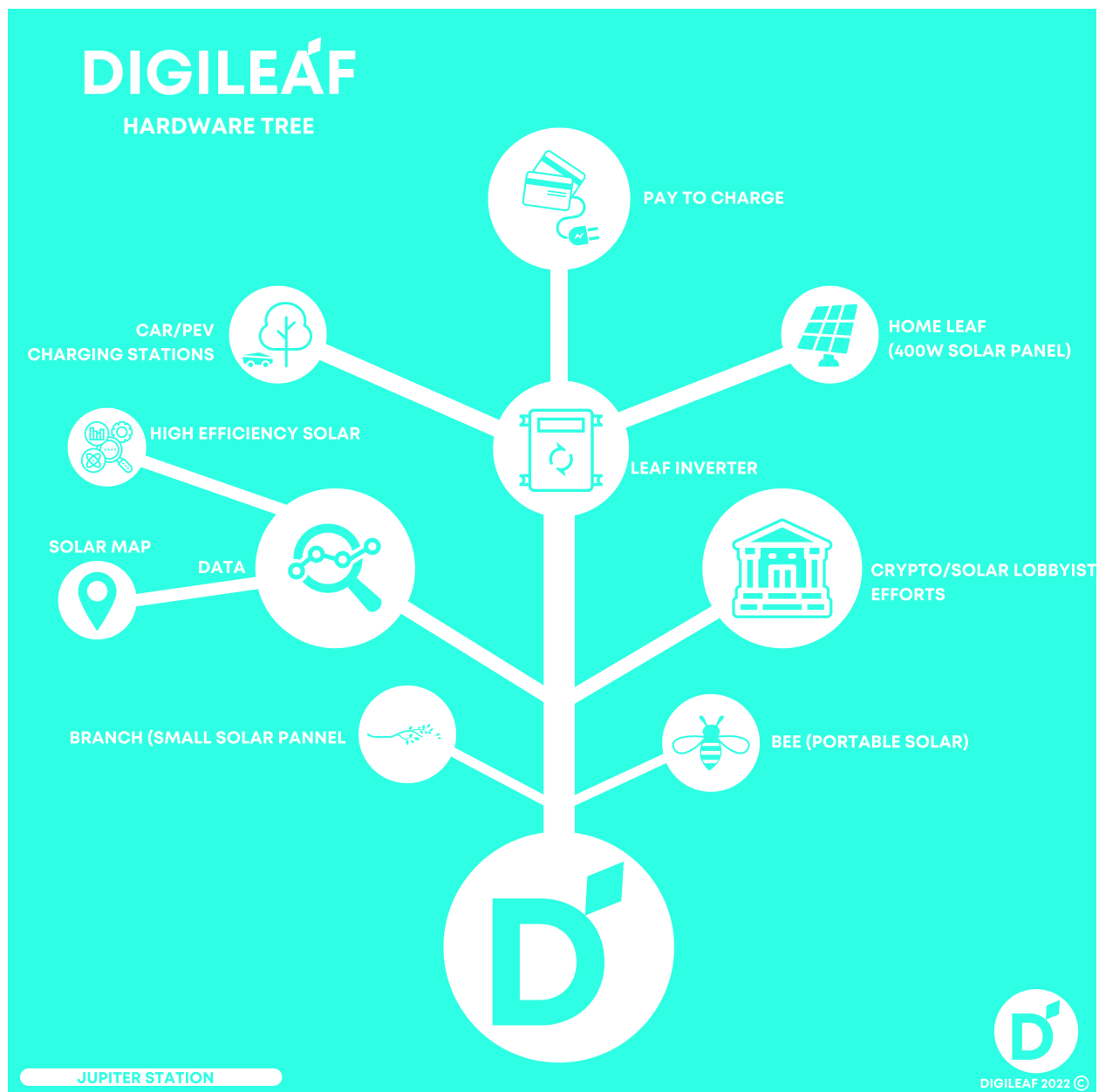
Purchase data with Leaf\$ for consumer logistics.

Zero Identity Catalog (ZIC) - A process of logging Data without an owner. All Leaf Types  
will participate in ZI



# LEAF MODELS

Leafs come in a few models for each use case. DigiLeaf rewards reflected in daily deposits in Leaf\$.

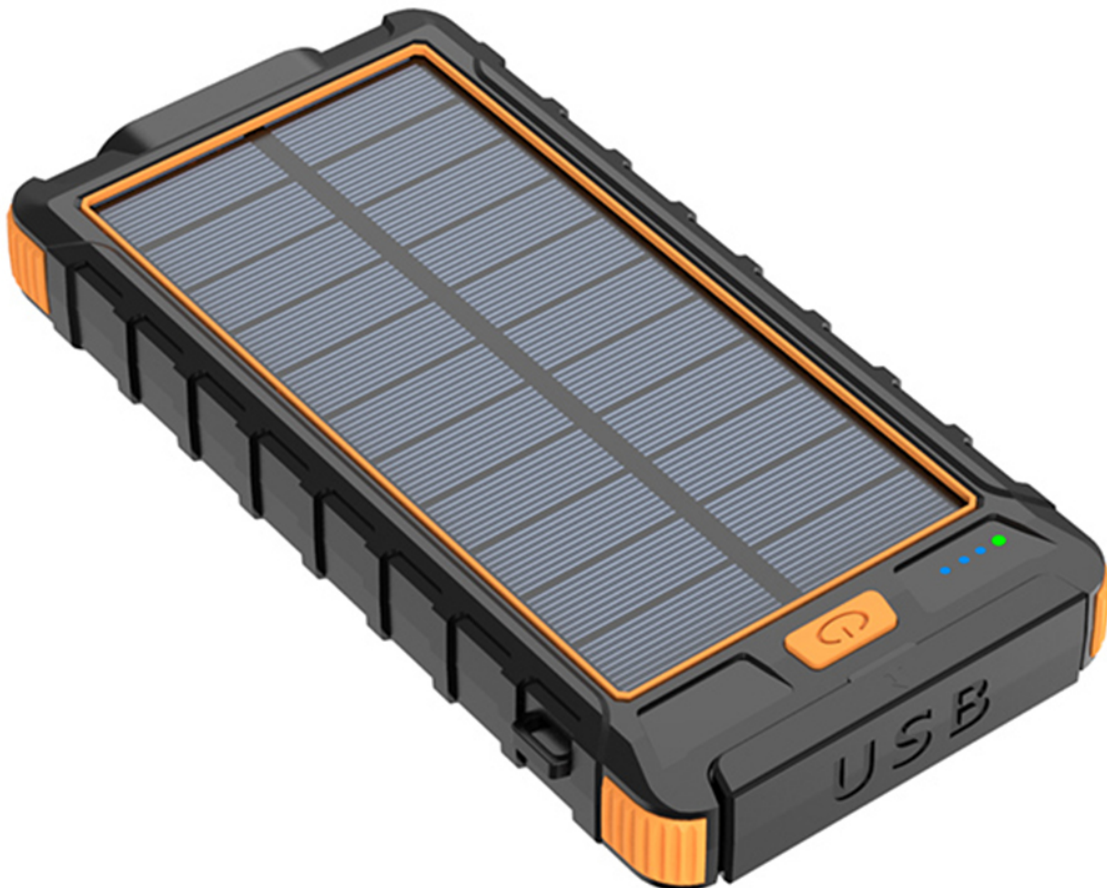


# Type A - Personal

Consumer application to truly decentralize life

## Bee

Small portable DigiLeaf



## **Bee Technical Specifications**

**Two charging options:** MAIN CHARGE: you can use the included micro USB cable and plug it into your wall plug or you can put the charger in direct sunlight to charge.

**High Capacity:** Built-in 10000mAh battery, which is enough to charge an iPhone up to 6 times! This charger is a great choice for camping trips or other outdoor activities where outlets are scarce.

**Dual USB output charging ports and fast charge:** allow you to charge 2 digital devices simultaneously. It also charges your phone very fast with the 2.1 usb port

**Two extra cool features:** a flashlight and a hook. There is a flashlight on the back (great to have in a pinch!), with a power button on the side (double click the power button to turn the led light on, then double click again to turn the light off). With an included hook, you can hang the charger from a backpack.



## Branch

Small static DigiLeaf



## **Branch Technical Specifications**

### **Type-C Waterproof Solar Panel with 10FT 5V 3.6W Cable, Continuous Power Supply**

**Weather-Resistant Design:** with weatherproof material and design, the solar panel can withstand harsh weather, including rain, snow, intense cold, and heat. The 10FT 5V 5W cable makes it easy to place the camera and the solar panel at a longer distance. This is designed for both indoor and outdoor use. So, you can feel free to install it outdoors, like in your garage, backyard, or anywhere else.

**Stay Charged:** the solar panel can absorb sunlight, offering a non-stop power supply for your battery camera. With this solar panel, you don't need to frequently uninstall your rechargeable camera and charge the camera manually. The 10FT cable makes it easy to place the camera and the solar panel at a longer distance.

**Easy installation:** 360-degree rotation, 90-degree inclined mounting bracket allows you to easily locate the solar panel, allowing you to choose the best position for the solar panel to receive direct sunlight. Then, connect the solar charging cable to the panel and your camera. The 10FT cable makes it easy to place the camera and the solar panel at a longer distance.

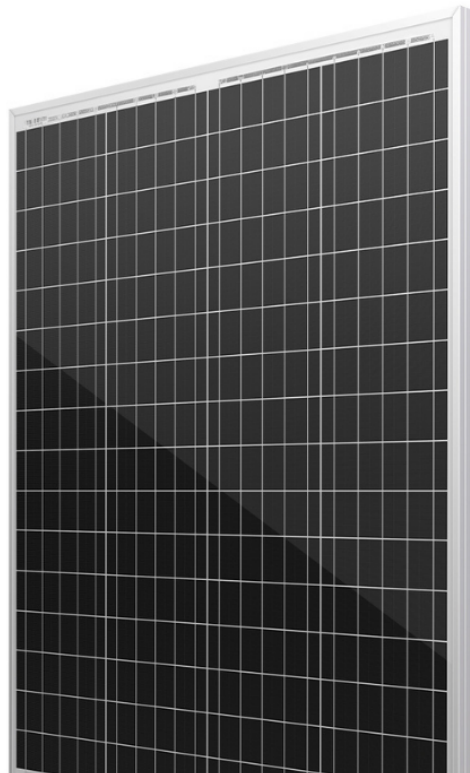
**Package List:** the package contains a solar panel with a 10FT charging cable, 360-degree mounting bracket, and screws.

Type A Leafs are low-power and do not require Wifi.



# Type B - Leafs

Modular Solar for any building



## Sapling

Modular Solar Panels



## **Type B (Sapling) Information**

100 - 400 Watt

### **Modular:**

Connect Type B DigiLeafs with DigiLinks, a built-in completely modular solar panel link system to bridge all of your DigiLeafs into one power source.

### **Size Variants:**

2 Foot X 2 Foot

4 Foot X 6 Foot

### **Connectivity:**

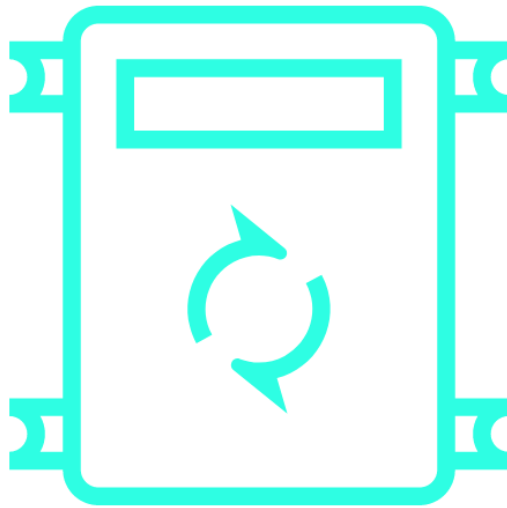
Wifi or IOT Required connected through Leaf Inverter





# Leaf Inverters

Connect Your Leafs



# Leaf Inverter

120V & 240V

## Leaf Inverter

Connect your solar panels to your Leaf Inverter. Leaf Inverters can be connected in parallel. A Leaf Inverter is required in order to earn rewards for your Leaf Solar Panels.



## **Inverter Information**

### **Modular**

Connect Leaf Inverters together to increase your total watts.

### **Size Variants**

120V / 240V

2kW / 5kw

### **Setup**

DIY easy install and mounts to the wall.

### **Connectivity**

Wifi/4g/5g/LAN



# Tree Station

## Solar Car and PEV Charging Station

A Tree Station comes in three parts, a Pad, a Stock and your Banana Leaf. This pay to use Tree Station can charge any car or personal electric vehicle. Each piece may be used stand alone, though only the Leafs will earn Leaf\$ through mining.

### **Pad**

Modular hook up panel for any car or PEV

### **Stock**

To hold up you Leaf of choice. Internal all in one set up and pay to charge station.

### **Banna Leaf**

Commercial Solar Panel

5g IOT



# **Tree Station Rewards**

**Tree Stations earn Leaf\$ in two ways.**

## **For each Leaf (DigiLeaf Solar Panel)**

Connect your Leafs directly to your Tree Station. Earn rewards directly from your Leafs and manage the Power at your Tree Station.

## **Pay to Charge**

Sell your Electricity at your own rate! With attachments for all electric cars and PEV (Personal Electric Vehicles) this is the one stop solutions for any commuter in the modern world. Place a



# Roots

## Modular Battery Walls

<https://digileaf.io/batteries>



# Leaf Charger

## Home & Commercial Electric Vehicle Charger

<https://digileaf.io/leaf-chargers>

### Home & Commercial PEV Charging

Weatherproof Leaf Chargers for fast home vehicle charging.

### Configurations

Configure your Leaf Charger to meet your needs on speed or amount of vehicles.

### Secure

Lock out hours, password protection and smart logging.

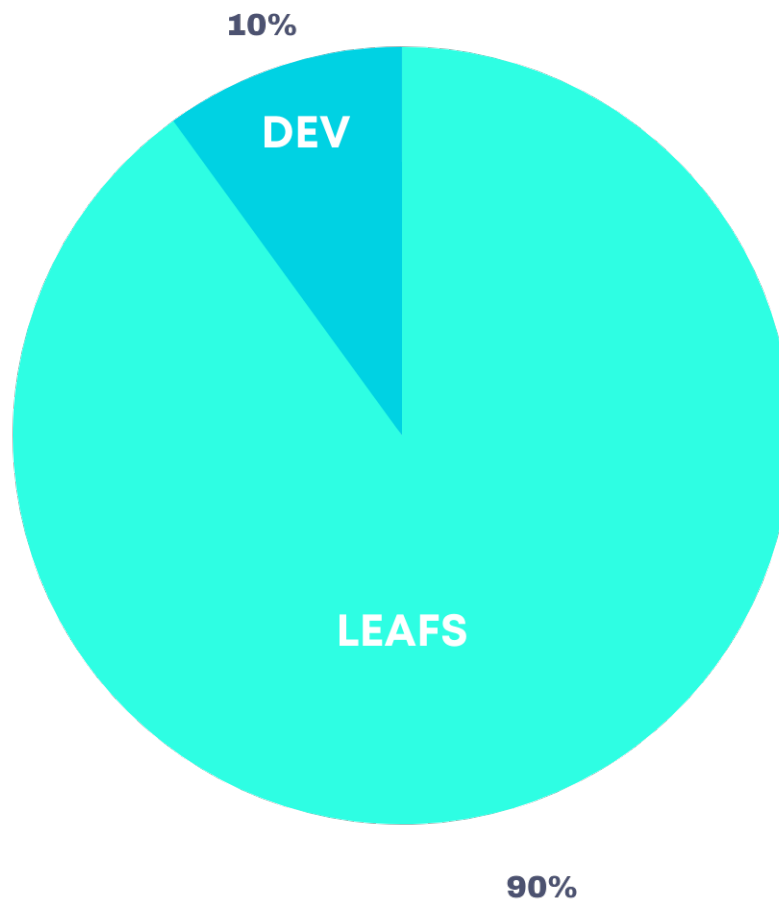
### Rate Options

Set your price for others to use your charger.



# TOKEN MODEL

DigiLeafs distribute Leaf\$. There will be a total of 4,200,000,000 Leaf\$ ever in existence. Dev or Development coins will be used to support the DigiLeaf Network.





# Rewards

Rewards are distributed once per day. Rewards will start the day after the license has been activated.

## Key:

**Leaf (L)** - Amount of DigiLeaf Solar panels in whole numbers

**Type (T)** - The Type of Leaf

**Leaf\$(X)** - The amount of DigiLeaf coins

**Halving Period (H)** - Amount of times the DigiLeaf rewards have halved



# Rewards Per Type

## **Personal (Type A)**

250,000 Coins / Day (Stationary)

150,000 Coins / Day (Mobile)

## **Home (Type B)**

800,000 Coins / Day

## **Commercial (Type C)**

1,600,000 Coins / Day

## **Project TS (Type E)**

3,200,000 Coins / Day



# Rewards Per DigiLeaf

## Type A

**250,000 / L = X / Day (Stationary)**

**150,000 / L = X / Day (Mobile)**

## Type B

**800,000 / L = X / Day**

## Type C

**1,600,000 / L = X / Day**



# ADDING LEAF\$ TO YOUR WALLET

## Follow The Steps Below:

1. Go to your Algorand Wallet of choice

<https://perawallet.app/>

[https://chrome.google.com/webstore/detail/algosigner/](https://chrome.google.com/webstore/detail/algosigner/kmmolakhbgdlpkjkcjkebenjheonagdm?hl=en-US)

[kmmolakhbgdlpkjkcjkebenjheonagdm?hl=en-US](https://chrome.google.com/webstore/detail/algosigner/kmmolakhbgdlpkjkcjkebenjheonagdm?hl=en-US)

2. Click “Add Asset”
3. Add Leaf\$ by ID “554633918”
4. Submit the transaction



# LICENSES

Each Leaf needs its own license. Licenses are type-specific and last one year from the point of activation. Licenses may be transferred and reassigned, traded, bought, and sold. Once a license has started, it may not be paused. Your license will activate when it is connected to a device.



## **Personal**

Good for use with Personal Leafs. Each License will cost \$10 equivalent in Leaf\$. License lasts One Year from Activation.

## **Leaf**

Good for use with Family Leafs. Each License will cost \$20 equivalent in Leaf\$. License lasts One Year from Activation.

## **Inverter**

No License Needed

## **Charger**

No License Needed

## **Battery**

No License Needed



# BUYING A LICENSE

## Follow The Steps Below to Buy a License:

1. Go to [digileaf.io/license](https://digileaf.io/license)
2. Click on the license you wish to purchase
3. Click “Buy”
4. Connect your wallet and accept the transactions
5. Your license will be added to your wallet upon completion



# CONNECTING A LICENSE

## Follow the Steps to Connect a License

1. Go to [digileaf.io/](https://digileaf.io/)
2. Enter your Leaf ID and your secret key
3. Click “Connect License”
4. Enter your license Asset ID
5. Click “Done”





# REASSIGNING LICENSE

## Follow the Steps to Reassign of License

1. Go to [digileaf.io/](https://digileaf.io/)
2. Enter your Leaf ID and your secret key
3. Click “Disconnect License”



# MOVING WALLETS

## **Follow the steps to move your license to a new wallet**

1. Find your asset ID for your license in your wallet and copy it
2. Add that asset to your new wallet
3. Send you license from your old wallet to your new wallet



# SELLING

**Coming soon on Blocks Market**

# ROAD MAP

## **Phase One**

Infrastructure

## **Phase Two**

Community

## **Phase Three**

Loby

## **Phase Four**

Silicon



JUPITER STATION