



PROJECT VILLAGE

**PROJECT VILLAGE EXISTS TO
DESIGN SUSTAINABLE SYSTEMS
FOR THE FUTURE HEALTH OF
OUR RURAL COMMUNITIES.**



Rural communities with an abundance of potential



Project : Village empowers community-based action so that all residents can thrive.

With residents, community partners, and stakeholders, our collaborative approach tackles some of our region's most significant challenges: access to affordable housing, food insecurity, population decline, and issues related to transportation, health, and accessibility.

By keeping the local community at the heart of our work, we have identified four foundational pillars:



COMMUNITY



ENVIRONMENT



GOVERNANCE



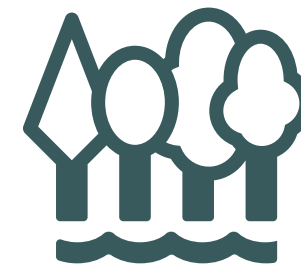
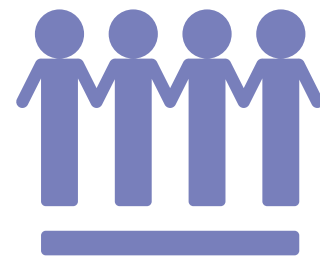
ECONOMY

Foundational Pillars

for designing sustainable systems

Get Involved Community

Inclusive community participation that designs and implements sustainable outcomes.



Environment *Do Your Part*

Sustainable practices for healthy and diverse ecosystems.

Have Your Say Governance

Decision-making driven by transparency and community participation.

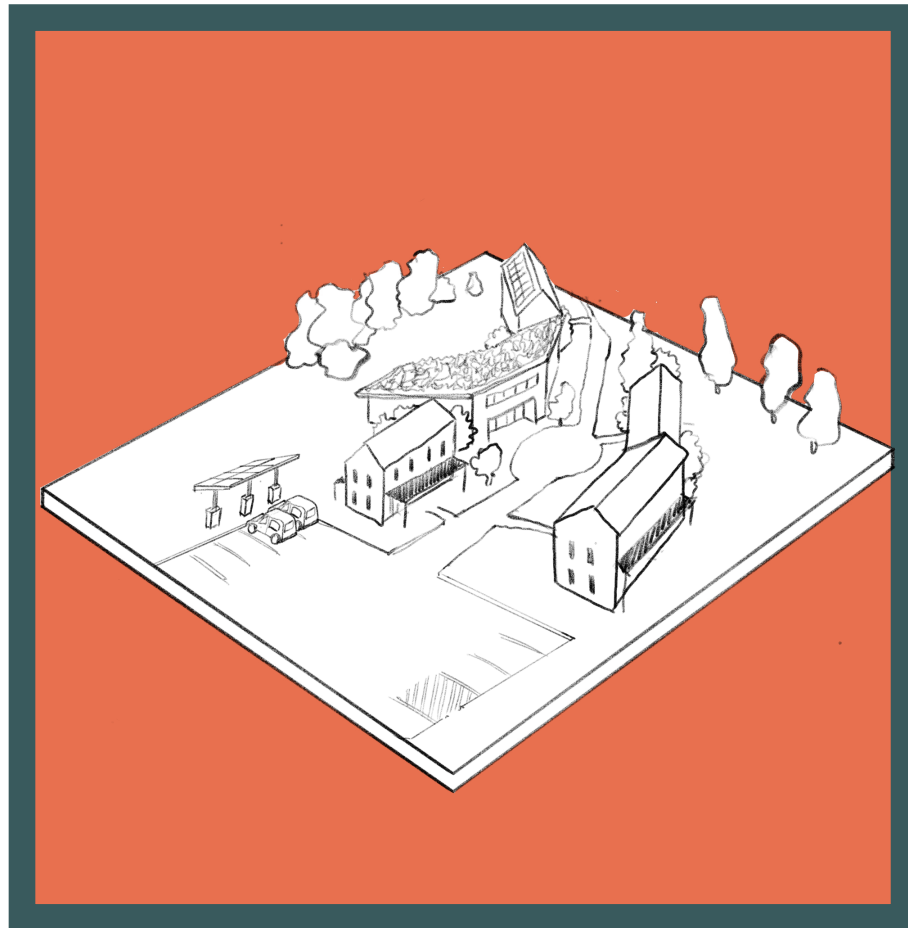


Economy *Secure Your Future*

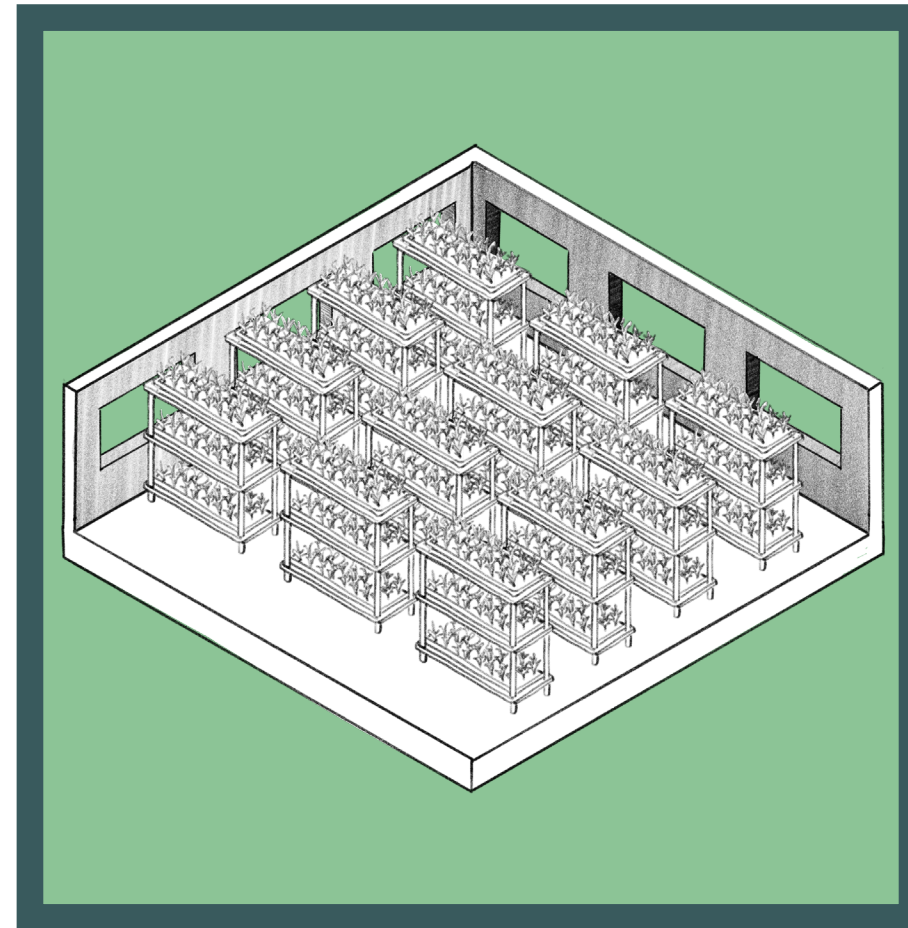
Leveraging opportunities for economic prosperity, job growth, and local resources.



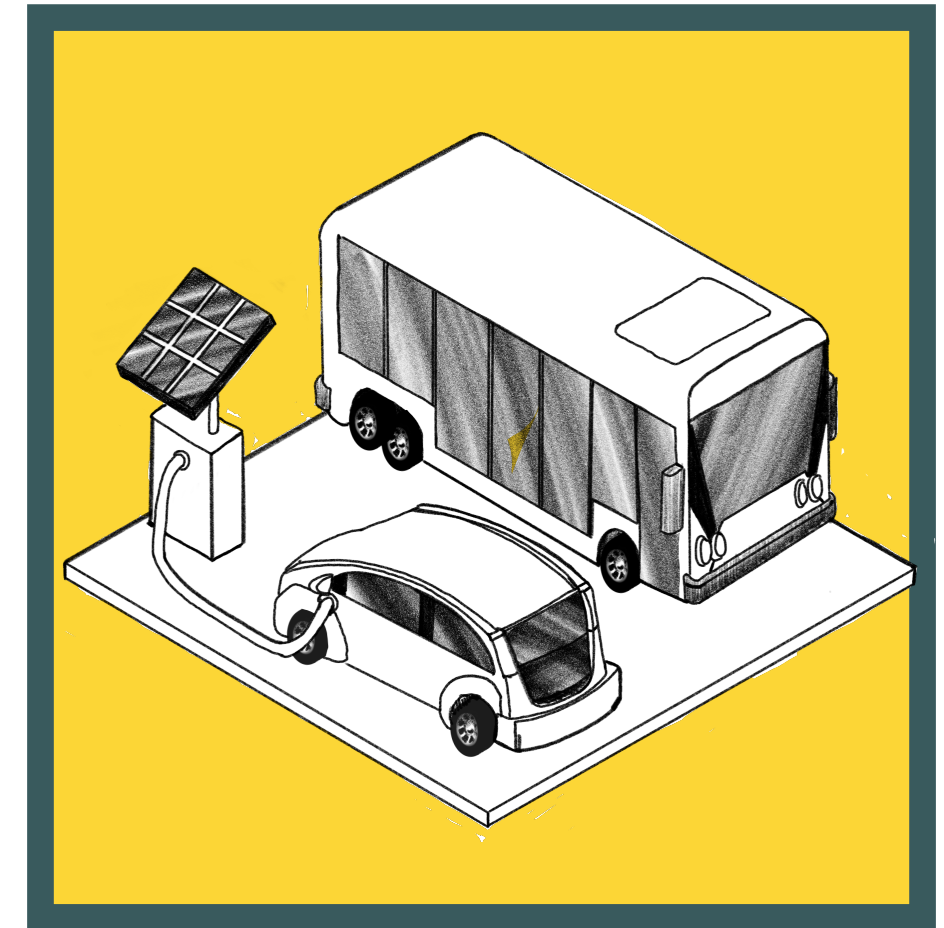
Our Initiatives



Shelter



Food



Transportation



SHELTER THAT BUILDS COMMUNITY

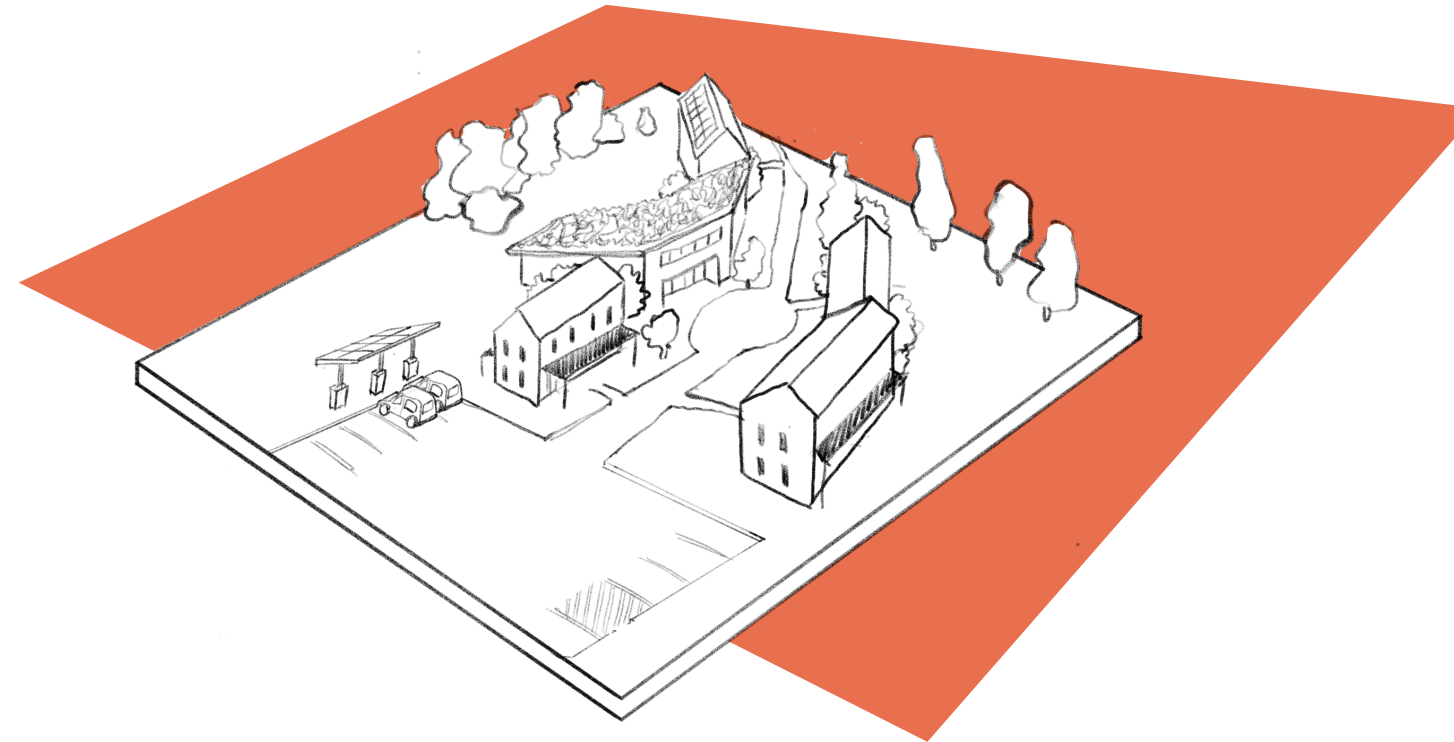


Project:Village is creating a phased plan for **affordable housing and community spaces** on 7.5 acres of land in coastal Blacks Harbour. Phase I will begin in 2022 with 24 units of accessible housing.



Southwest New Brunswick 2020 Municipal Housing study estimates the county will need 253 new dwellings per year through 2026. In addition, a 2021 housing survey in Blacks Harbour asked 83 community members about their current housing needs. 59 members identified that they need rental housing now.

Our housing units, and community spaces, will be co-designed in **collaboration with residents and community partners.**



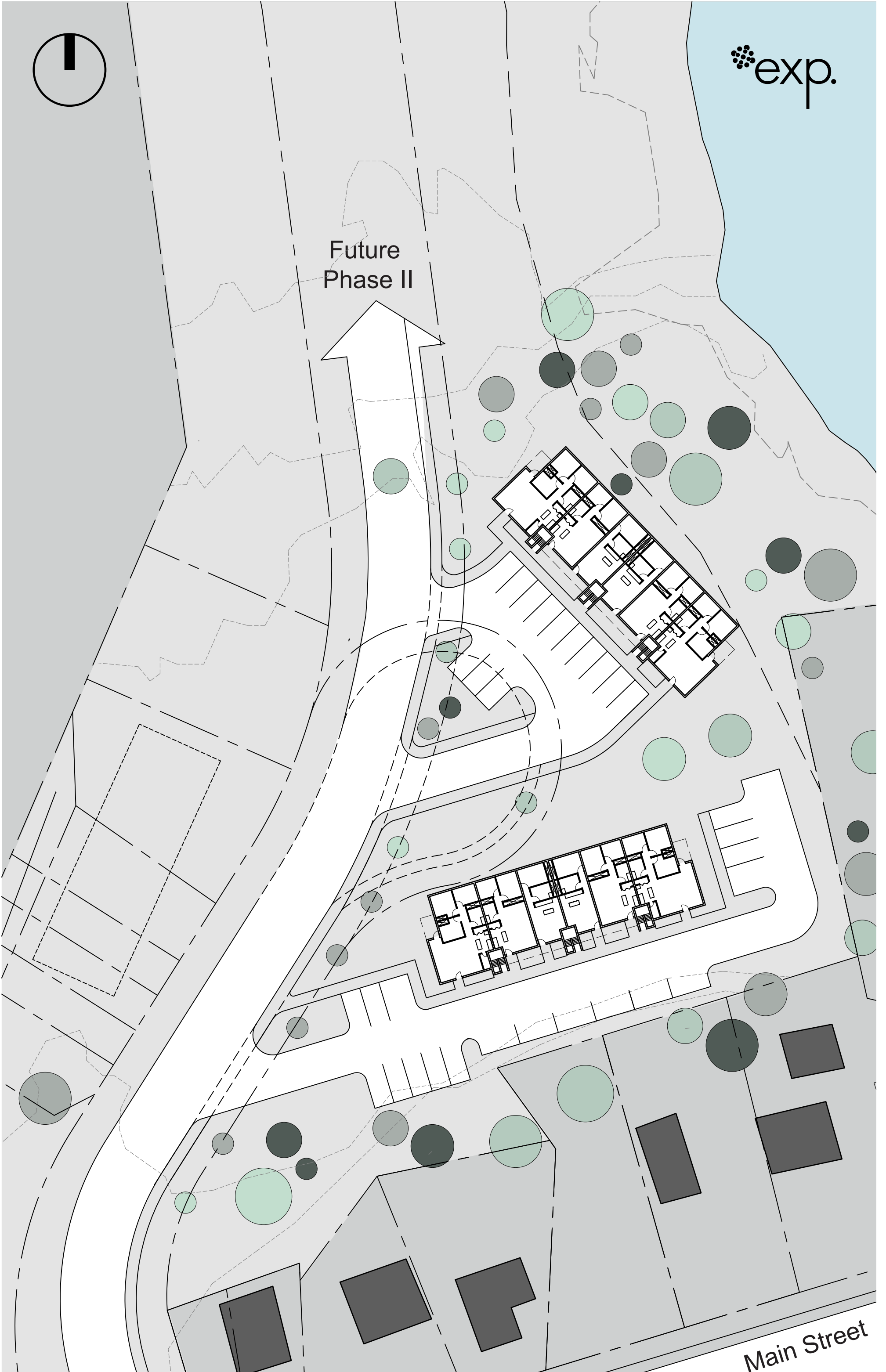
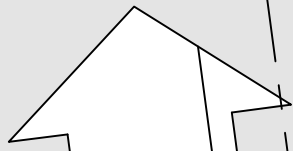
Affordable housing units will:

- Provide safe, healthy, and accessible homes
- Create a variety of housing options that encourage population retention
- Utilize energy efficient designs that lower utility costs and increase resident comfort

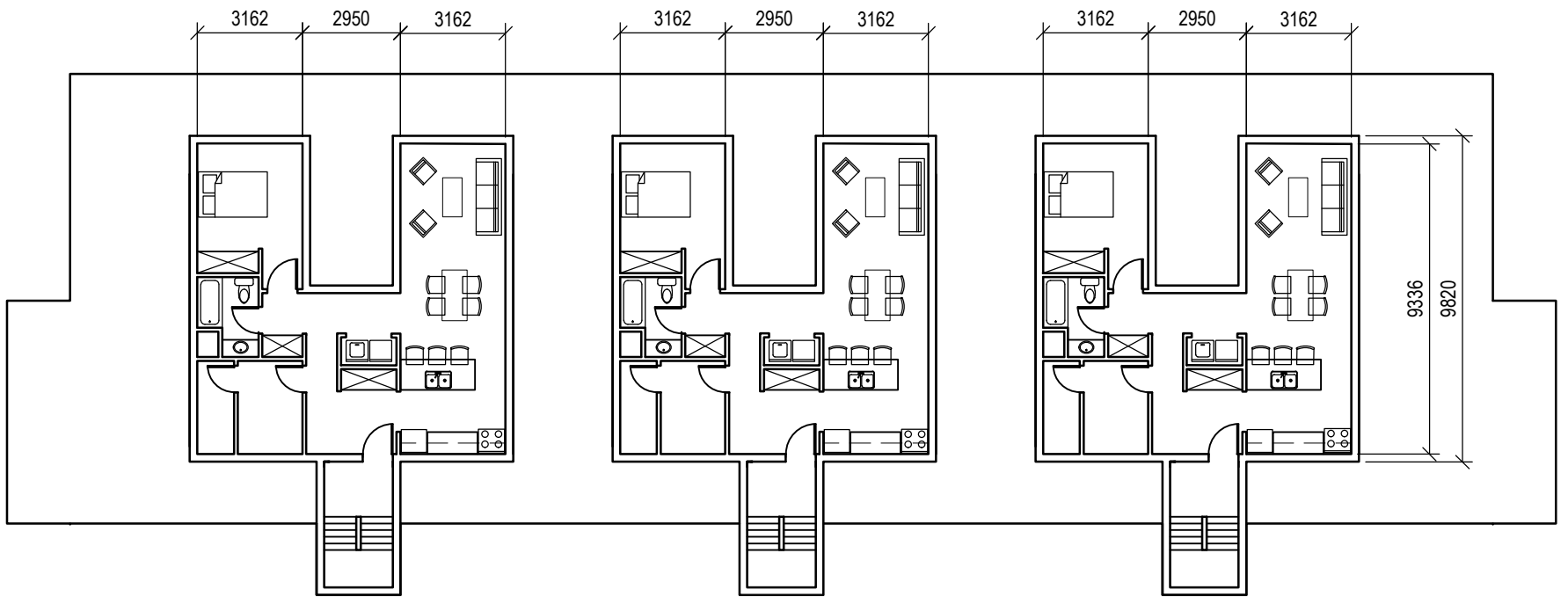




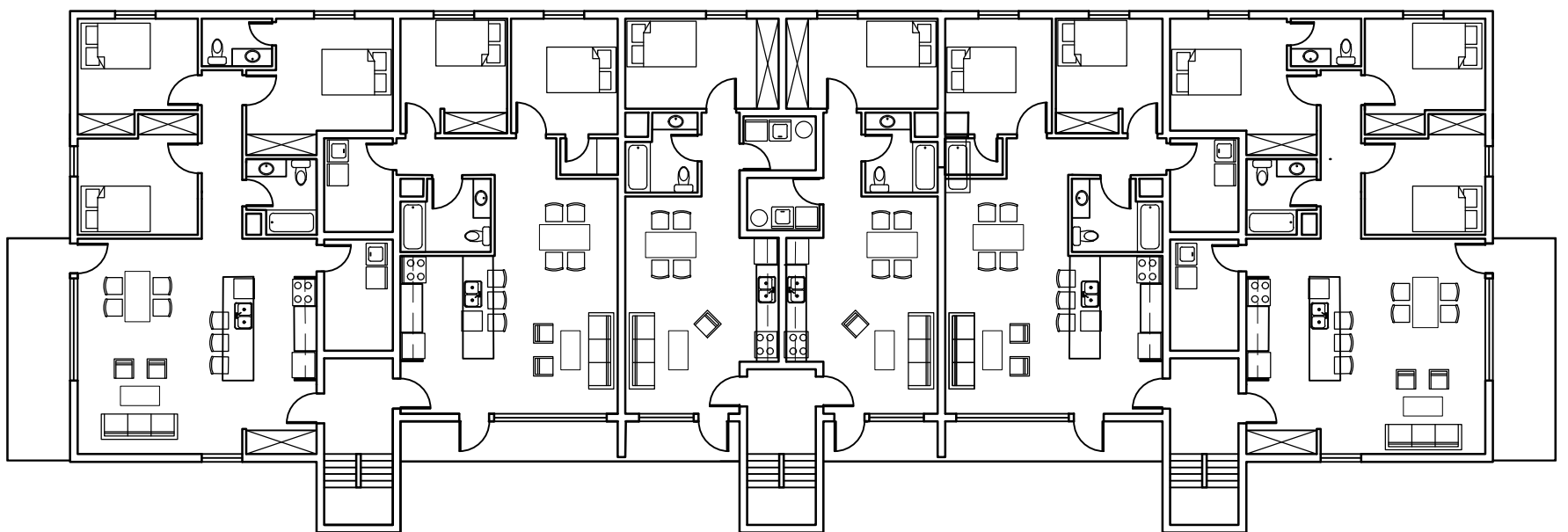
Future
Phase II



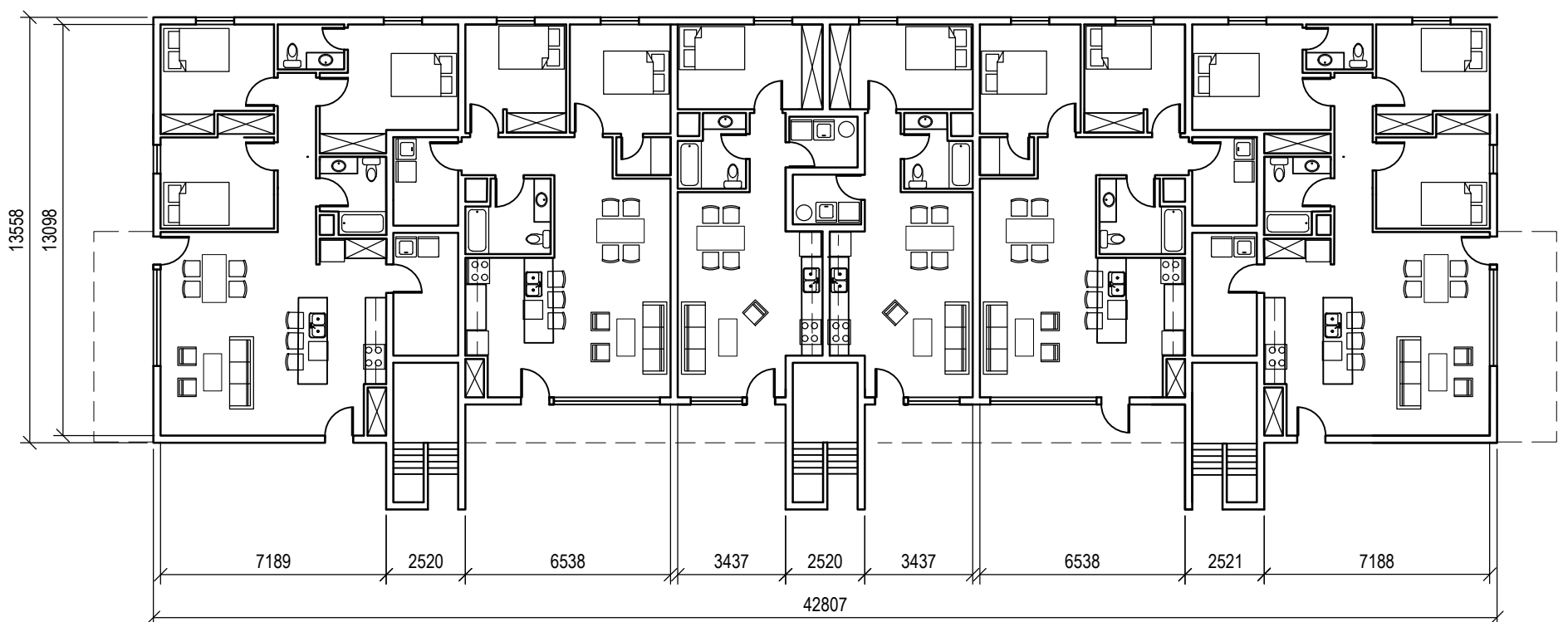
Main Street



THIRD LEVEL PLAN



SECOND LEVEL PLAN



MAIN LEVEL PLAN

