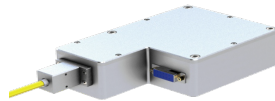


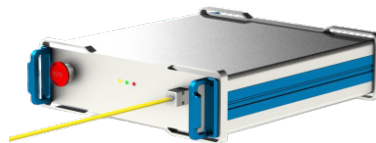
# MISFIT PHOTONICS

## Fiber Coupled Blue Laser Modules

**Applications: Precision Welding, Bio-Medical Research, Scientific Research, Lighting**



Optical Parameters			
Center Wavelength	455±10nm		
Output Power	50W	100W	200W
Fiber core diameter	≥ 200μm		
Numerical apture NA	0.22		
Fiber connector	SMA905 or customize		
Electrical Parameters			
Operating current (Tm=22°C)	3.5A		
Maximum reverse current (Tm=22°C)	85mA		
Threshold current	0.22~0.42A		
Others			
Cooling mode	Air cooling or water cooling		
Operating temperature	15-30°C		
Storage temperature	-40~85°C		



Optical Parameters			
Center Wavelength	455±10nm		
Output Power	50W	100W	200W
Fiber core diameter	≥ 200μm		
Numerical apture NA	0.22		
Fiber connector	SMA905 or customize		
Electrical Parameters			
Input voltage	AC 110V/220V		
Input power	<2kW		
Control interface	RS 232/DB25		
Others			
Cooling mode	Air cooling or water cooling		
Operating temperature	15-30°C		
Storage temperature	-40~85°C		