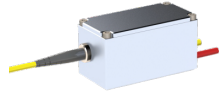


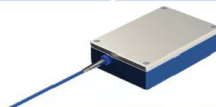
MISFIT PHOTONICS

Fiber Coupled Blue Laser Module

Applications: Lighting, Bio-Medical Research, Scientific Research



Optical Parameters	
Center Wavelength	455±10nm
Output Power	10W
Fiber core diameter	105μm
Numerical apture NA	0.22
Fiber connector	SMA905 or customize
Electrical Parameters	
Operating current (Tm=22°C)	3.5A
Maximum reverse current (Tm=22°C)	85mA
Threshold current	0.22~0.42A
Others	
Cooling mode	Air cooling
Operating temperature	15-30°C
Storage temperature	-40~85°C



Optical Parameters	
Center Wavelength	455±10nm
Output Power	20W
Fiber core diameter	105μm
Numerical apture NA	0.22
Fiber connector	SMA905 or customize
Electrical Parameters	
Operating current (Tm=22°C)	3.5A
Maximum reverse current (Tm=22°C)	85mA
Threshold current	0.22~0.42A
Others	
Cooling mode	Air cooling
Operating temperature	15-30°C
Storage temperature	-40~85°C