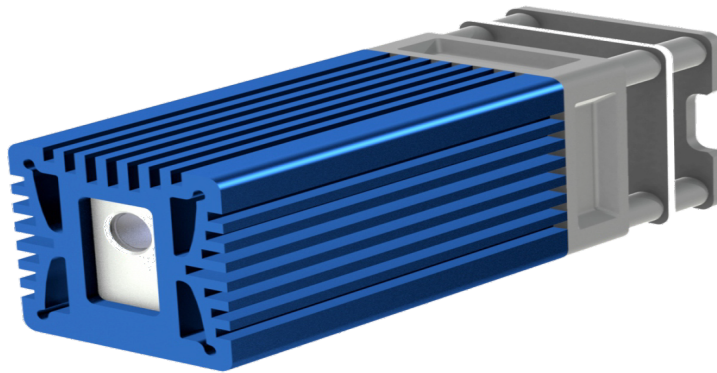


MISFIT PHOTONICS

5W/10W Blue Laser Module

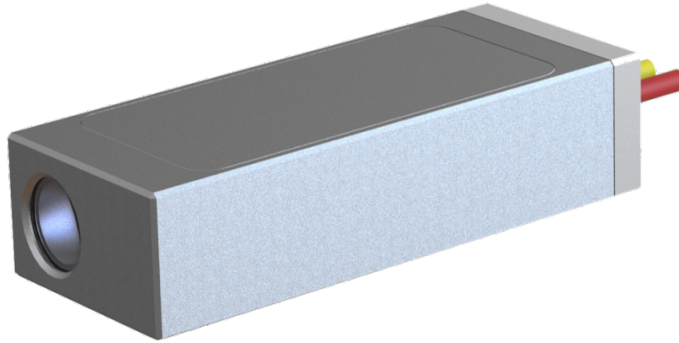
Applications: Wood and Leather Engraving



Optical Parameters		
Center Wavelength	455±10nm	
Output Power	5W	10W
Spot size	60µm x 80µm	
Focal length	45mm	
Laser level	Class 4	
Electrical Parameters		
Input voltage	DC 12V	DC 24V
Modulation mode	D5V TTL	
TTL trigger mode	High level effective	
Others		
Cooling mode	Air cooling	
Operating temperature	15-30°C	
Storage temperature	-40~85°C	

MISFIT PHOTONICS

Blue Laser Head



Optical Parameters		
Center Wavelength	455±10nm	
Output Power	5W	10W
Focal length	45mm	
Spot size	60µm x 80µm	
Electrical Parameters		
Operating current (Tm=22°C)	3.5A	
Maximum reverse current (Tm=22°C)	85mA	
Threshold current	0.22~0.42A	
Others		
Cooling mode	Air cooling	
Operating temperature	15-35°C	
Storage temperature	-40~85°C	

