

# North Bromsgrove High School

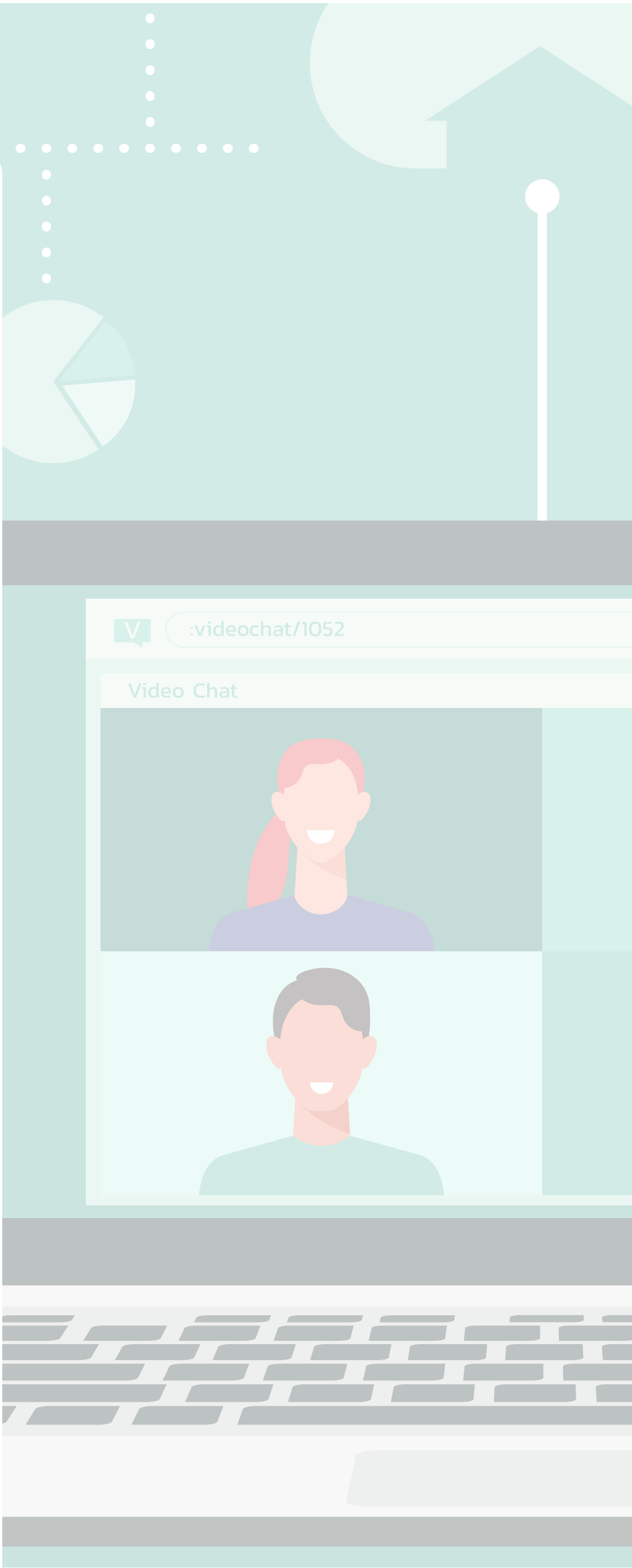
## Remote Learning Guidance



# NBHS Remote Learning: Parent Information

North Bromsgrove High School is dedicated to providing high-quality remote learning in support of our students across our North family.

**We are committed to:**  
Actively engaging all students with tangible learning opportunities which adhere to schemes of learning, thereby equipping them with the necessary knowledge, skills and confidence to excel in their studies.  
Delivering engaging transformational education to students, whether they are physically in school or accessing their educational remotely from home.  
Developing opportunities to enable staff to foster student relationships so as to ensure student mental health and wellbeing is supported across our North family.



## Structure of the school day

08:45	Roll call
08:55 - 09:55	Period one
09:55 - 10:55	Period two
10:55 - 11:15	Break
11:15 - 12:15	Period three
12:15 - 13:15	Period four
13:15 - 13:50	Lunch
13:50 - 14:50	Period 5
14:50 -15:15	Tutor time

### Remote Learning Curriculum: What is taught to students?

Students will follow the same broad curriculum at home as they would do normally within the school. Students will

follow their normal timetable, which is on ClassCharts, which comprises of subjects, tutor time, assemblies all delivered remotely. The timings of the school day can be found above.



# NBHS Remote Learning: Parent Information

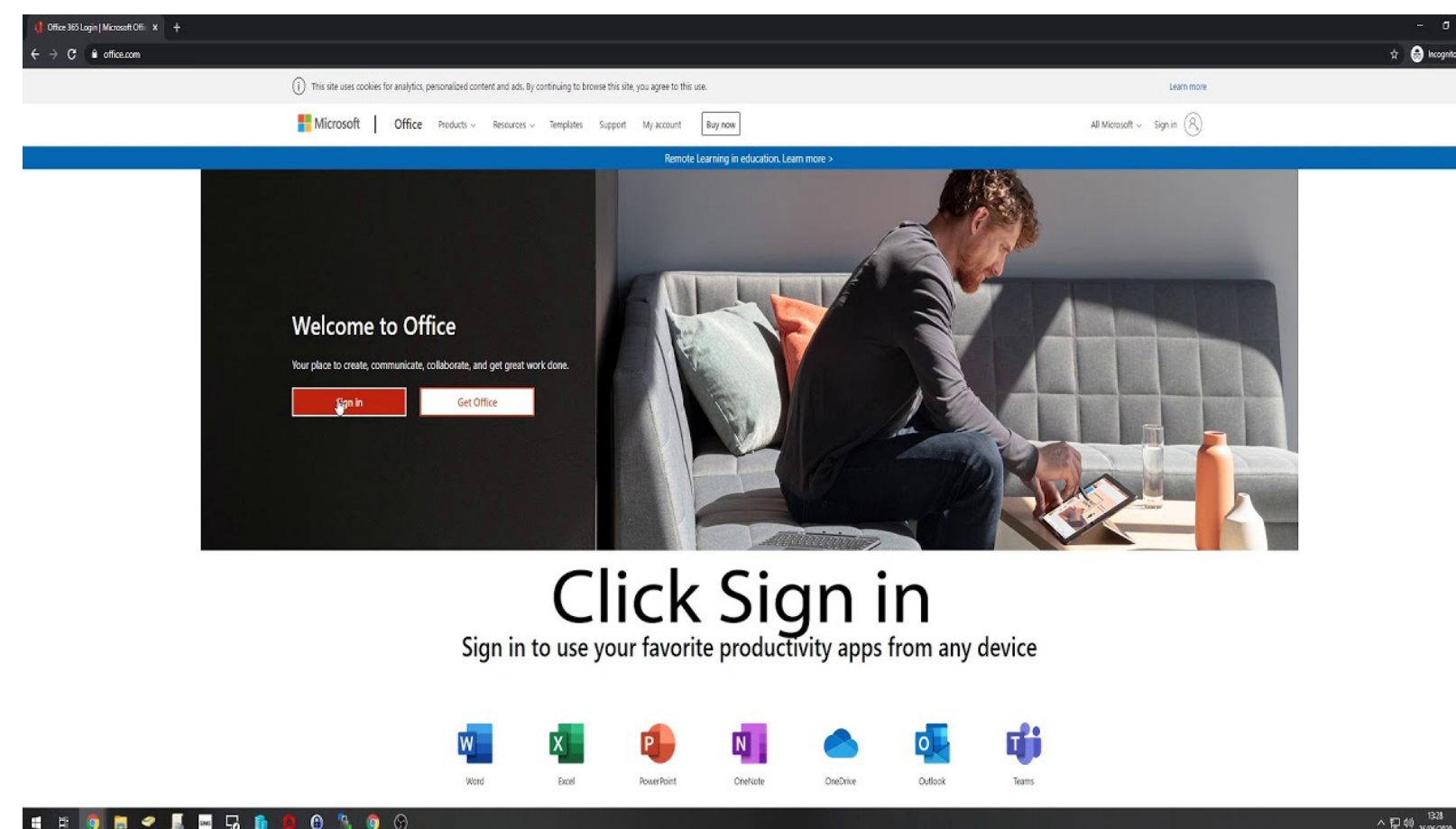
## Remote Teaching and Learning: How much learning does my child do each day?

In response to parent feedback we have streamlined live lessons to 50 minutes so as to provide a respite from screen time for the last 10 minutes of every lesson; we encourage our students to take in fresh air, hydrate, stretch their legs and do simple exercise in between live lessons. We expect that remote education (including remote teaching and independent work) will take students broadly the same number of hours as if they were studying within the school. We understand that access to technology may be an issue; so students may have a mixture of online learning and learning away from the computer. It is also important that students continue to read both fiction and non-fiction texts so as to develop the literacy strategies that they have been using in school.

## How does my child access remote learning?

Students are taught by accessing online 'live' lessons; these will be delivered via Microsoft Teams and the student will log in with their school details which have been provided. Webinars, letters and guidance documents have been provided and we encourage every family to click on the link below:

### Click here for MS Teams Student Guide



## If my child does not have digital or online access at home, how will you support them to access remote education?

We recognise that some students may not have suitable online access at home. We take the following approaches to support those students to access remote education:

- Where possible the school will provide a loan of a laptop to access the online resources and/or WiFi/ dongle.
- If your child does not have access to any device to access remote learning please contact Mrs Ingram Deputy Headteacher on **ain@northbromsgrove.worcs.sch.uk**
- Importantly if you are a family who is pupil premium then you are entitled to a laptop for your child. It is vital that you contact Mrs Ingram if you meet the Pupil Premium criteria.

# NBHS Remote Learning: Parent Information

## How will my child be taught remotely?

Staff will use a variety of approaches to teach students remotely:

- “Live” lessons will be the commonality across all lessons which directly follow the students’ timetable, and department scheme of learning. The ‘live’ aspect of the lesson we feel is important as it promotes opportunities for students to check understanding, ask questions, and benefit from important human interaction (also benefits our staff wellbeing as we know we are making a difference!).
- There may be occasions whereby pre-recorded lessons for students are utilised

which could be film and/or PowerPoint based and involve voice recorded teacher instruction so that students can work at their own pace with clear modelling and explanation from the teacher.

- Staff may use links to high quality external produced resources such as GCSE Pod, MathsWatch.
- In light of the pandemic many agencies are developing new resources which are continually coming online and staff may provide links to external support materials e.g. Oak National School which the government have been tasked to support online learning nationally.

## Where will homework be set?

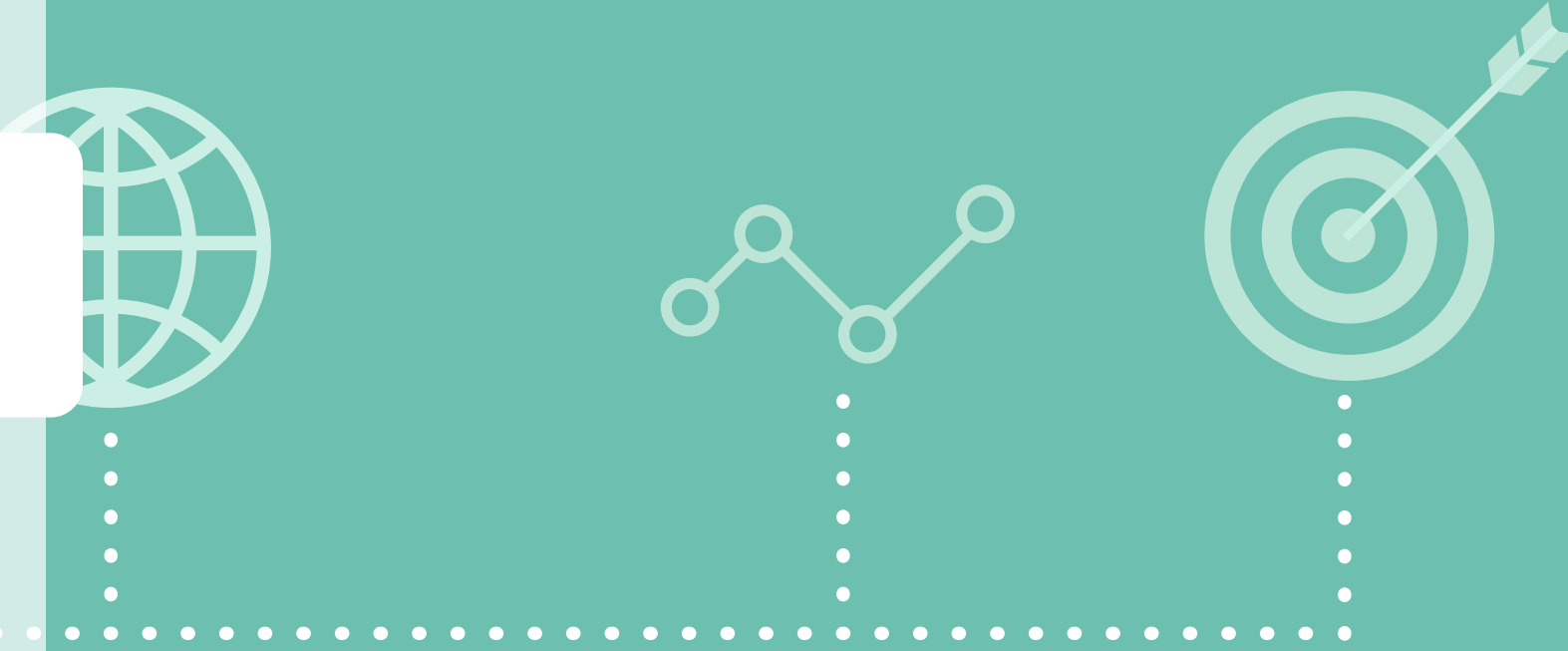
Homework will be set as usual and information pertaining to homework will be set on ClassCharts.

## Where will resources for the lesson be placed?

All lesson resources will be placed into MS Teams (and not on ClassCharts).

## What if I cannot attend my lesson?

In the unlikely event that you are unable to attend a lesson you should email Ms Belmonte Attendance Officer **[jbe@northbromsgrove.worcs.sch.uk](mailto:jbe@northbromsgrove.worcs.sch.uk)** on the morning of your absence at the latest. You will need to catch up on the work in the next lesson please email your teacher for the work to be sent to you directly.





# NBHS Remote Learning: Parent Information

## What are your expectations for my child's engagement and the support that we as parents and carers should provide at home?

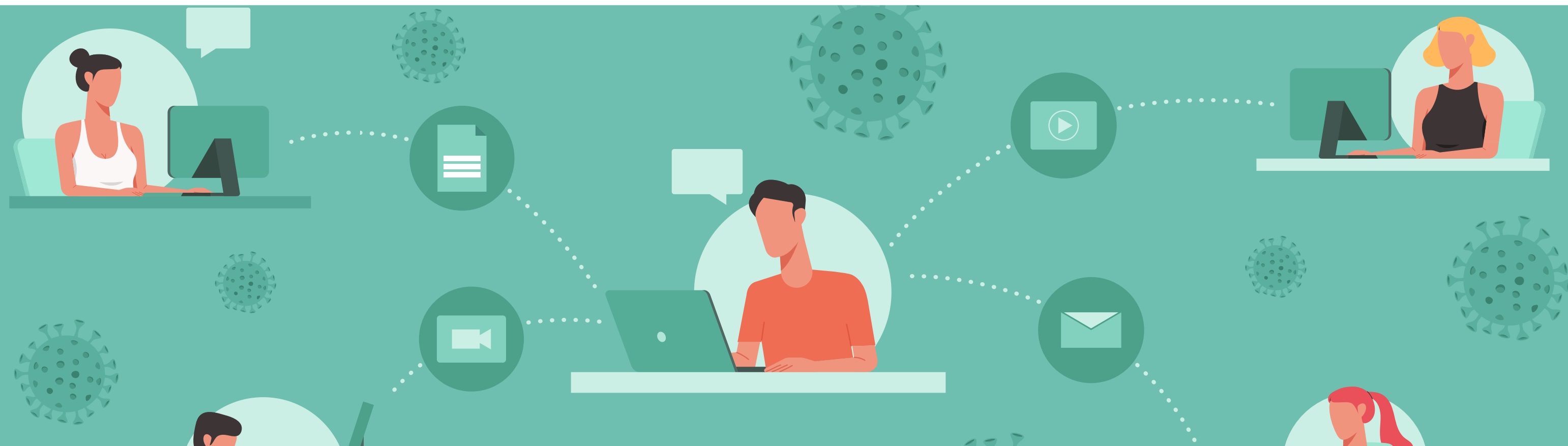
We expect the same high level of engagement from your child for remote learning as we do in the school. Students should be ready to learn and on time for the start of every lesson with the correct equipment and resource. The teachers will follow the same behaviour policy praising students and rewarding excellent work during online lessons using positive house points through Classcharts.

## How will you check student engagement?

Our online learning platform allows teachers to keep track of attendance, engagement and completion of work. We feel that is important that students are rewarded for their efforts during these periods of learning online at home and the majority of our students will receive positive house points. Parents may be contacted by text, email or telephone call from class teachers or the Progress Leader if there are concerns about a child's engagement, online behaviour, or if they require additional support. As parents you can see this on the Classcharts app.

## How will you check on progress and assess my child's work?

Our approach to assessing work remotely is very similar to that within the classroom. We place high regard on ensuring that students receive timely and high quality feedback. Feedback can take many forms and may not always mean extensive written comments for individual students. For example, we will use rich questioning which can either be feedback verbally or through the comments, use of hands up to check understanding. Whole-class feedback or quizzes marked automatically via digital platforms are also valid and effective methods, amongst many others. In response to students and parent feedback we are placing an emphasis on scaffolding learning with careful consideration of pace and have found that low stakes testing can check students' understanding of any misconceptions and also help identify how they can make improvements to their work.



# NBHS Remote Learning: Parent Information

**Students with additional needs: How will you work with me to help my child, who needs additional support from adults, at home to access remote education?**

We recognise that some students with special educational needs and disabilities (SEND) may not be able to access remote education without support from adults at home. We acknowledge the difficulties this may place on families, and we will work with parents and carers to support those students in the following ways:

In some cases a teaching assistant will assist the student remotely in online 'live' lessons. Work will always be provided at a suitable level for a student's ability and where necessary the student will be provided with additional help such as scaffolds and models to help complete the work.

**What is the situation if the area is not in lockdown and my child needs to self isolate?**

Where individual students need to self-isolate but the majority of their peer group remains in school, the format of the remote education provided will differ from the approach for whole groups. The resources for each lesson will be uploaded to Teams so that students can access all of the learning. If you wish to discuss your individual child's needs regarding remote learning please get in contact with Mrs Jenkinson [rje@northbromsgrove.worcs.sch.uk](mailto:rje@northbromsgrove.worcs.sch.uk)

**If my child is not in school because they are self-isolating, how will their remote education differ from the approaches described above?**

This will depend upon the number of students isolating and the resources available within the School. Where possible the student will follow their usual timetable but when this is deemed not to be possible. Students will access their lesson resources directly from their class Team and teachers will give feedback on their progress and learning.





# NBHS Remote Learning: Parent Information

## Tutor Time

As you will see from the timetable in the earlier section, tutor time takes place at the end of the school day. Students will be expected to be prompt to the session and tutors will follow the CARE scheme of learning which supports students pastoral, social, mental health and well being.

## Assemblies

Students will continue to have Heads of House and Progress Leaders assemblies to support them pastorally and these will be delivered through Teams following the usual schedule.

## Parents' Evenings

We have had excellent feedback on our Virtual Parents' Evenings and have found the following benefits:

The format supports the confidentiality  
Easily accessible for parents to engage through a range of their home devices (we have seen excellent attendance by families)  
Greater efficiency and ability to speak with more families in the window of time

The avoidance of queue jumping (not that NB families are guilty of this!)

To support our North families we will be having two parents' evenings for each year group this academic year to support our students and offer valuable feedback.

## Support

If you need help for whatever reason there are details of the support we offer [here](#) and a Covid specific one [here](#).





# NBHS Remote Learning: Student Information

## Expectations

It is important that remote learning mirrors your 'normal' day and therefore you will follow your timetable and attend tutor time at the end of each day. You will need to be punctual to every lesson.

You need to follow the Acceptable Use Policy and ensure that you are engaging and contributing to every lesson to the best of your ability and not hampering learning. Every second counts!

Live lessons will take place in your normal subject slot and will last for 50 minutes. The last 10 minutes is for you to stretch your legs, get some fresh air, hydrate and prepare for the next lesson.

A register will be taken at the start of every lesson and staff will check that you are actively engaged periodically throughout the lesson. We encourage you to feedback and ask questions throughout the lesson.

If a student is truanting a lesson, then a communication will be sent to direct parents.

Homework will be placed on Classcharts and lesson resources will be placed into MS Teams.




### What if I cannot attend my lesson?

In the unlikely event that you are unable to attend a lesson you should email Ms Belmonte Attendance Officer **[jbe@northbromsgrove.worcs.sch.uk](mailto:jbe@northbromsgrove.worcs.sch.uk)** on the morning of your absence. You will need to catch up on the work.



# NBHS Remote Learning: Student Information

## Safeguarding live lessons

- 
1. Students should, if possible, be in a private place with as few interruptions as possible.
  2. Students should have their camera turned off and their microphone turned on but should behave exactly as they would in a normal lesson.
  3. The live class may be recorded so that if any issues arise, the video can be reviewed.
  4. Language and behaviour must be appropriate, including that of any family members in the background.
  5. Written transcripts, via chat for example, during the lesson may be kept for 30 days.
  6. The online lesson will be scanned by the schools internet safety software for any inappropriate language.
  7. Students will not be able to share their screens unless requested to by the teacher.
  8. The individual chat function will be disabled.
  9. Any messages sent and received will be kept in the school's audit logs.
  10. Staff and students must not remain in the virtual classroom 1 to 1 at the end of the lesson.
  11. Leaders will periodically visit lessons to ensure content is appropriate, offer praise and recognise good work.
  12. If a student has any concerns about the online lessons, they should report them immediately to their Progress Leader.



# NBHS Remote Learning: Student Information

## What might a remote lesson look like?

The lessons are likely to include the elements below:

1. A review of prior learning: prompting you to think about what you have learnt previously and how this will help you with your next steps.

2. Explain: There is likely to be some explicit teaching to help you to understand the class material. This might be a video, reading, PowerPoint.

3. Practise: Students will be taught a small amount of new information, then given a chance to do something with it before moving on. This will allow your teacher to see how well you are grasping the concepts. You will be able

to put your hands up (virtually) so that you can ask any questions you might have.

4. Reflect: There will be points during the lesson where you are expected to reflect on what you have learnt after you have completed a piece of work.

5. Review: There will be opportunities to review the learning in the lesson and think about common misconceptions and how you might apply the learning to a new situation.

6. Independent Work: You should “leave” the online lesson understanding your next steps for learning. This may involve completing a homework style task or further reading that will extend your learning.

### Preparing for the lesson

Ahead of your lesson, please think about what resources you may need. For example: the equipment that you will need to access the lesson (e.g. calculators, pens, paper, textbook, previous learning tasks, etc.) Evidence of a specific task that you were asked to complete ahead of the lesson.

### Online conduct and appropriate behaviour

Remember that this is a normal lesson with your subject teacher. Lessons may be recorded for safeguarding purposes. We have the same high expectations of behaviour and conduct that we would have if you were in a classroom. Failure to adhere to these expectations will result in a referral to your Year Leader and Headteacher and further sanctions may apply.

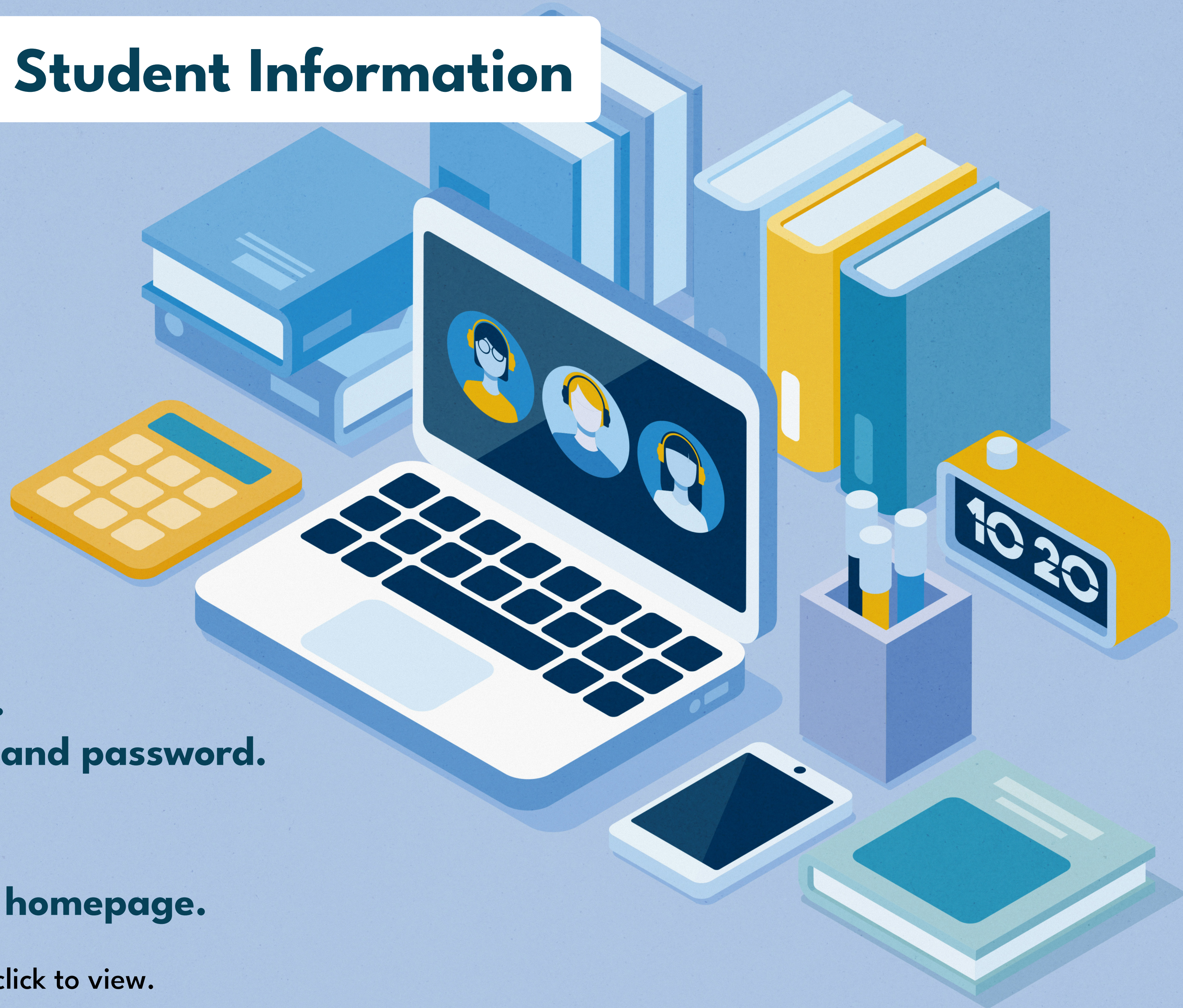


# NBHS Remote Learning: Student Information

## Joining an online lesson

- Step 1: Go to Google.**
  - Step 2: Search for 'Office 365 Login'.**
  - Step 3: Login with your school email and password.**
  - Step 4: Click on 'Teams'.**
  - Step 5: Click 'Use Web App instead'.**
- Your classes will now appear in your homepage.**

\*We've prepared a quick video on accessing Teams click to view.





# Health and Wellbeing: COVID 19

As one North Family it is important that we are taking care of ourselves and one another.

If you have any concerns or worries it is important that you tell someone so we can help you. You are our brilliant students and we care for you!

There are a number of ways you can access support, dependent upon your concern:

If it is a worry about schoolwork you can speak/ comment during a live lesson and staff will be able to guide/ support you. You can email a member of staff direct using the list here.

You can speak / contact you tutor during form time at the end of the day.

You can email Mrs Hodgson

**[dho@northbromsgrove.worcs.sch.uk](mailto:dho@northbromsgrove.worcs.sch.uk)**

if you have any safeguarding concerns or are worried about someone else.

Discuss your worries and concerns with loved ones, family and friends. This could be done over the phone or social networking. Speaking to friends and family around you can help with your mindset.

If you would rather not talk about it, that's OK too. We have included some links below for you to explore:

**Kooth • Young Minds • Childline**





## Online Safeguarding

The link below is a tool for young people to report and remove nude images/videos online:

**Report Nude Image Online**

For further information and advice, please click the link : **Sexting**

## Parents Safeguarding – COVID 19 Advice for parent(s) / carer(s)

If you're a parent, carer, student or professional with a safeguarding or welfare issue, please contact: Mrs Hodgson - **dho@northbromsgrove.worcs.sch.uk**

Please use the following links for advice and support with self isolating at home.  
**The Children's Society • Parent Info • thinkuknow • Advice to parents and carers on keeping children safe from abuse and harm**







**North Bromsgrove High School**  
School Drive, Stratford Road  
Bromsgrove, Worcestershire  
B60 1BA

Telephone: **01572 872375**

Website: [northbromsgrove.worcs.sch.uk](http://northbromsgrove.worcs.sch.uk)

Email: [nbhs@northbromsgrove.worcs.sch.uk](mailto:nbhs@northbromsgrove.worcs.sch.uk)

Twitter: [@northbromsgrove](https://twitter.com/northbromsgrove)

Instagram: [@northbromsgrovehighschool](https://www.instagram.com/northbromsgrovehighschool)

Facebook: [@OfficialNBHS](https://www.facebook.com/OfficialNBHS)

Youtube: [NBHSStudiesDetermineCharacter](https://www.youtube.com/NBHSStudiesDetermineCharacter)

