



Jackson & Co



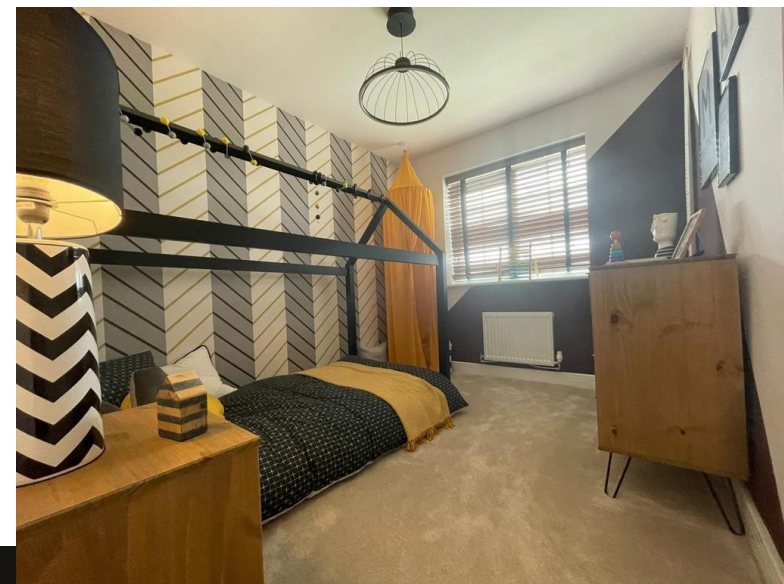
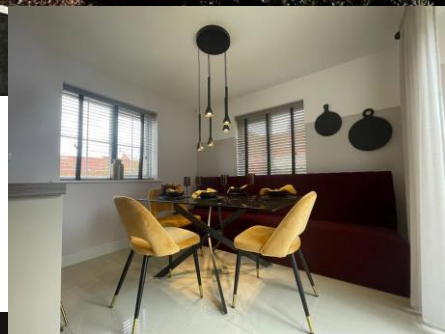
Bronze Barrow Way

Bramford, Ipswich, IP8 4FJ

Asking Price Of £451,995

A Magnificent 4-Bedroom Family Home in a Prime Location

Welcome to The Silversmith, a beautifully designed 4-bedroom family home that offers an abundance of space, natural light, and a versatile layout perfect for modern living. With its unique L-shaped design, this stunning property offers dual- and triple-aspect rooms that bathe the home in sunshine and create a harmonious flow throughout, making it ideal for both family time and entertaining guests.



Property Features

- Open plan kitchen and family area ●
- En suite to bedroom 1 ●
- No chain ●
- New build ●

Full Description

DESCRIPTION

The Heart of the Home: Open-Plan Living

At the core of The Silversmith is the spacious open-plan kitchen and family area—a generous space that seamlessly combines cooking and relaxing. The U-shaped kitchen is well-equipped with high-quality finishes and features a convenient breakfast bar, perfect for casual dining or catching up with family. French doors from the family area open out to the rear garden, extending the living space and inviting you to enjoy morning coffees or evening drinks in the fresh air.

For added convenience, the kitchen includes a storage cupboard, ideal for keeping kitchen essentials organized or even transforming it into a pantry for extra food storage.

Flexible Living Spaces

The separate living room is a light-filled space that also benefits from French doors leading to the rear garden, offering easy access to the outdoors where children can play or you can simply unwind. On the opposite side of the hallway, the separate dining room provides a perfect setting for formal meals or entertaining guests. Alternatively, this flexible space could serve as a playroom, study, or home office, offering versatility to suit your needs.

The ground floor is further enhanced by a cloakroom and an additional storage cupboard in the hallway, providing practical solutions to everyday living.

Private and Peaceful Bedrooms

On the first floor, you'll find four thoughtfully laid-out bedrooms. Two of these are generously sized doubles, offering plenty of room for rest and relaxation. The layout has been designed to maximize privacy, a perfect feature for families with older children or teenagers. Bedroom 1 enjoys the luxury of an en-suite shower room, while the remaining three bedrooms share the use of the stylish family bathroom.

A handy storage cupboard on the landing ensures that towels, bed linens, and other essentials are neatly stored and easily accessible.

Additional Features

Estate Management Charge: £325.28

Internal Area: 1214 sq. ft.

Council Tax Band: TBC

Tenure: Freehold

Annual Service Charge: None

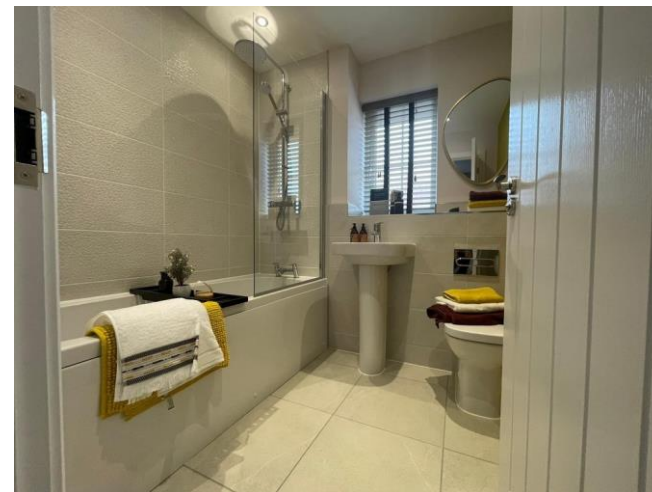
(Please note that council tax, service charges, and ground rents are estimations. Please check with your Sales Advisor for more specific details.)

About the Development

Lockwood Place is an exceptional development offering a range of 2, 3, and 4-bedroom homes, ideally located on the edge of the charming Bramford village, just 3.5 miles from Ipswich town centre. This attractive new community boasts excellent amenities, highly regarded local schools, and strong transport links, making it an ideal choice for families, first-time buyers, and professionals alike. The development is perfectly positioned for easy access to the wider Ipswich area and key commuter routes, ensuring a convenient and comfortable lifestyle for all.

AGENTS NOTES

Photos are a guide not the actual plot photos



Jackson & Co
43 Basepoint
70-72 The Havens
Ransomes Euro Park
IP3 9BF

www.jackson-ps.co.uk
contact@jackson-ps.co.uk
01473 722981

Agents Note: Whilst every care has been taken to prepare these particulars, they are for guidance purposes only. All measurements are approximate are for general guidance purposes only and whilst every care has been taken to ensure their accuracy, they should not be relied upon and potential buyers/tenants are advised to recheck the measurements