



Jackson & Co

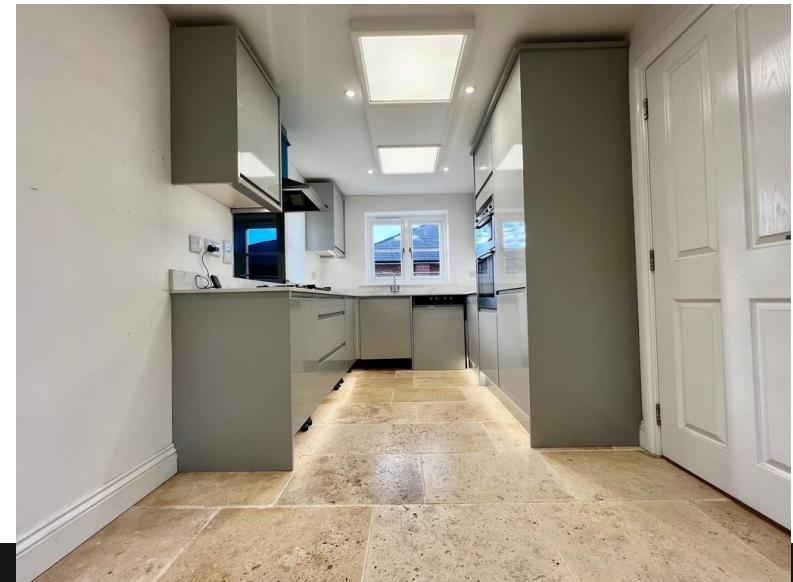


## Little Bramford Lane

Ipswich,

£345,000

Fantastic opportunity to purchase new build home offering accommodation over three floors with all bedrooms being doubles and all with en suites



# Property Features

---

- New build
- No chain
- Fully fitted kitchen
- Off road parking
- Internal viewing highly

# Full Description

---

## DESCRIPTION

New build home

This three bedroom three storey town house is perfect for those looking for flexible living

With the ground floor offering a open plan kitchen dining room with a fully fitted kitchen with integrated appliances and down lighting the dining space has double doors onto the rear garden

formal lounge with inset woodburner and brick fireplace with down lights double doors to the rear garden and window to the front making this a light and spacious room with cloakroom and utility space for washing machine llwc, wash and hand basin

The first floor offers two bedrooms both good sizes with

storage and wardrobe space with en suite shower rooms llwc, wash hand basins and shower cubicles and heated towel rails

The second floor is a great space offering a master suite with fitted storage with bathroom with a stand along bath with llwc, wash hand basin with views over the town

The home has off street parking large driveway to the side of the property offering ample parking the garden to the rear is paved and raised lawn area enclosed by brick walling and fencing

## LOCATION

Ipswich offers a range of shopping facilities, restaurants, bars and schools, 10 minute walk to town and 10 minute walk to Christchurch Park which is home to some fantastic events throughout the year. For those looking to commute to London and beyond, there is Ipswich railway station and also great access to the A12/A14.





%epcGraph\_c\_1\_263%

Jackson & Co  
43 Basepoint  
70-72 The Havens  
Ransomes Euro Park  
IP3 9BF

[www.jackson-ps.co.uk](http://www.jackson-ps.co.uk)  
[contact@jackson-ps.co.uk](mailto:contact@jackson-ps.co.uk)  
01473 722981

Agents Note: Whilst every care has been taken to prepare these particulars, they are for guidance purposes only. All measurements are approximate are for general guidance purposes only and whilst every care has been taken to ensure their accuracy, they should not be relied upon and potential buyers/tenants are advised to recheck the measurements