



Jackson & Co



## Sorley Road

Stowmarket, Suffolk, IP14 1UY

Offers In Excess Of £280,000

Three-bedroom semi-detached house set on the popular Northfield View development in Stowmarket. The property offers a spacious living/dining room, modern kitchen with integrated appliances, WC, family bathroom, en suite to master bedroom, garage, driveway parking and a well designed rear garden.



# Property Features

- Three bedroom semi-detached home
- Spacious living/dining room with garden access
- Modern kitchen with integrated appliances
- Master bedroom with en suite shower room
- Low maintenance and landscaped rear garden
- Garage and driveway parking
- Popular Northfield View Development location
- Ideal first time buy or family home

## FULL DESCRIPTION

The property is positioned within a sought-after modern Northfield View development in Stowmarket, offering excellent access to local amenities, schools, shops and transport links. Stowmarket provides a mainline railway station with direct links to London Liverpool Street, whilst the nearby A14 offers convenient routes towards Bury St Edmunds, Ipswich and Cambridge. The area is well regarded for family living with nearby green spaces and schooling options.

The ground floor accommodation begins with a welcoming entrance hallway leading to a modern fitted kitchen featuring integrated appliances including fridge/freezer, oven with hob and extractor fan, dishwasher and space for a washing machine. A convenient ground floor WC is also located off the hallway. To the rear of the property is a spacious

living/dining room offering an excellent entertaining space with double doors opening directly onto the rear garden.

On the first floor, the landing provides access to all three bedrooms and the family bathroom. Bedroom two and bedroom three both benefit from built in storage and pleasant views overlooking the rear garden. The family bathroom comprises a WC, hand basin and bath with shower over. The master bedroom enjoys views to the front aspect, built in storage and access to a stylish en suite shower room complete with WC, hand basin and shower enclosure.

Externally, the property features additional block paved parking space to the front, pathway leading to the entrance door and side access to the rear. The rear garden has been attractively redesigned for ease of maintenance whilst remaining a generous size, offering patio seating areas, artificial lawn, panelled fencing and a useful storage shed. The property further benefits from a garage and driveway parking positioned to the side.

The property falls within the catchment area for well-regarded local schooling, making it particularly appealing for families looking to benefit from convenient access to educational facilities within the Stowmarket area.

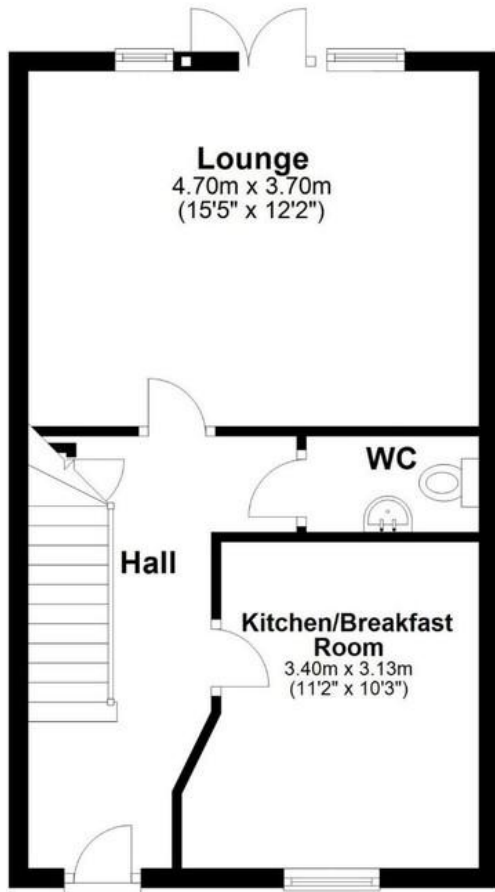
Tenure: Freehold  
Council Tax Band: C – Mid Suffolk  
Services: Mains Gas, Water & Electric





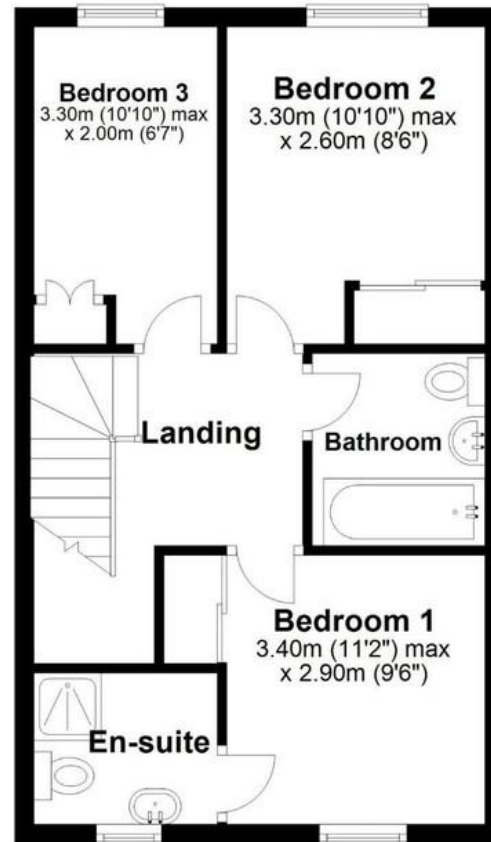
## Ground Floor

Approx. 39.0 sq. metres (419.9 sq. feet)



## First Floor

Approx. 40.4 sq. metres (435.0 sq. feet)



Score	Energy rating	Current	Potential
92+	A		95 A
81-91	B	83 B	
69-80	C		
55-68	D		
39-54	E		
21-38	F		
1-20	G		

Jackson & Co Bury St  
Edmunds

[www.jacksonandcocovertingsuffolk.co.uk](http://www.jacksonandcocovertingsuffolk.co.uk)  
[contact@jackson-ps.co.uk](mailto:contact@jackson-ps.co.uk)  
 01284 598 030

Agents Note: Whilst every care has been taken to prepare these particulars, they are for guidance purposes only. All measurements are approximate are for general guidance purposes only and whilst every care has been taken to ensure their accuracy, they should not be relied upon and potential buyers/tenants are advised to recheck the measurements