



Jackson & Co



## Wingfield Street

Ipswich, IP4

£725,000

Stunning Grade II Listed Five-Bedroom Residence in Prestigious Gated Development

A rare opportunity to own an elegant period home in the heart of the town centre, moments from the Marina.





# Property Features

- Two luxury en-suite bathrooms & a stylish family bathroom
- Town centre location
- No onward chain
- Gated development

# Full Description

## DESCRIPTION

This exquisite Grade II Listed home is set within an exclusive private gated development, offering a unique combination of period grandeur, generous living space, and modern convenience - all within a stone's throw of the town centre and picturesque Marina.

Beautifully maintained and rarely available, this substantial residence spans over four floors and is perfect for families or discerning buyers looking for something truly special.

### Key Features

- Five well-proportioned bedrooms
- Two luxury en-suite bathrooms & a stylish family bathroom
- Elegant 23ft living room with period features
- Spacious kitchen/breakfast room with direct courtyard access

- Large, versatile basement ideal as a games room, cinema, or additional bedroom
- Private courtyard garden
- Two allocated parking spaces within secure gated grounds
- Well-kept communal gardens with mature planting

Secure video entry system & electric wrought iron gates

### Accommodation Overview

#### Ground Floor

A welcoming reception hallway features solid oak flooring, original coving, sash windows, and a video entry system. The showstopping living room spans over 23ft with dual sash windows, ornate detailing, and a striking marble fireplace - perfect for both everyday living and entertaining. To the rear, the kitchen/breakfast room is fully fitted with integrated appliances, a range cooker, and ample space for dining. French doors open to a charming private courtyard, perfect for morning coffee or alfresco dining.

#### Lower Ground Floor

A large and versatile basement room provides excellent potential as a home cinema, gym, games room, or even a sixth bedroom.

#### First Floor

The luxurious master suite includes a grand bedroom with sash windows and fireplace, an impressive en-suite bathroom with spa bath and separate shower, and a generous walk-in dressing room. A further double bedroom with en-suite completes this floor.

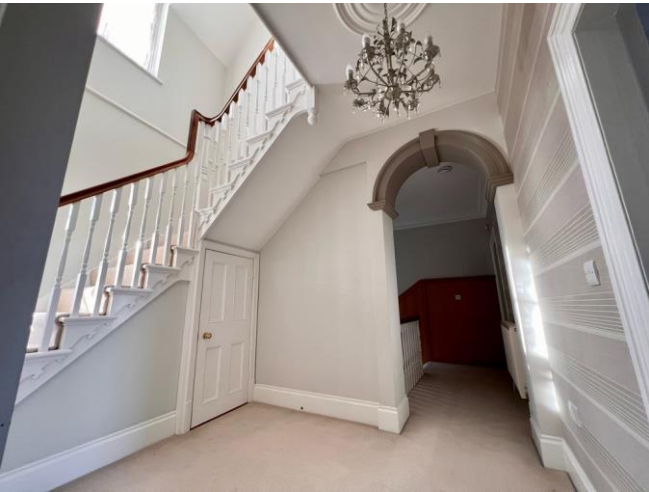
#### Second Floor

Three additional bedrooms, all with original period features, are served by a stylish family bathroom with separate shower and bath.

#### Exterior

The property is accessed via electric wrought iron gates into a secluded, well-maintained development with mature communal gardens and an additional secure pedestrian gate to the town centre. The two allocated parking spaces add convenience, while the private courtyard offers a peaceful outdoor retreat.

Located in the very heart of the town centre, this remarkable home is just a short walk from the vibrant Marina, boutique shops, restaurants, and transport links - combining the best of coastal and town living in one desirable address.





%epcGraph\_c\_1\_263%

Jackson & Co  
43 Basepoint  
70-72 The Havens  
Ransomes Euro Park  
IP3 9BF

[www.jackson-ps.co.uk](http://www.jackson-ps.co.uk)  
[contact@jackson-ps.co.uk](mailto:contact@jackson-ps.co.uk)  
01473 722981

Agents Note: Whilst every care has been taken to prepare these particulars, they are for guidance purposes only. All measurements are approximate are for general guidance purposes only and whilst every care has been taken to ensure their accuracy, they should not be relied upon and potential buyers/tenants are advised to recheck the measurements