

COMPLETE MECHANIZED SOLUTION FOR SUGARCANE CULTIVATION



SUB-SOILER



MB PLOUGH



POWER HARROW



LASER LEVELER



SUGARCANE PLANTER



MULTIROW WEEDER



SHREDO MULCHER



SQUARE BALER



GYRO RAKE



SUGARCANE HARVESTER



BOOM SPRAYER



DISC-OFF-BARRER

CASE II
AGRICULTURE

SKGF TRADING (2002) Co., Ltd.

63/87 Moo 5 T. Kamala, Kathu,
Phuket, Thailand 83150
Tel. +66 076 322 663



www.case4000.net

AUSTOFT® SUGARCANE HARVESTER



Powered by



AUSTOFT
4000Tx



INNOVATION WITHOUT LIMITS.

A registered trademark of Case IH.

Case Ih is a subsidiary of CNH Industrial. CNH Industrial is a global reference in the sugar and alcohol sector. With more than 75 years of experience in the sector CNH Industrial is the leader in providing mechanised sugarcane harvesting solutions.

Known for its continuous customer centric innovations by developing and creating benchmarks in Agricultural technology, now CNH Industrial introduces the next-gen Sugarcane Harvester: Austoft 4000 Tx

BETTER CUTTING QUALITY, IMPROVED PRODUCTIVITY AND LONGER STOOL LIFE IN THE SUGARCANE FIELD.

The Sugarcane Harvester Austoft 4000 Double Plus represents once again the pioneering spirit of Case IH. Working in row spacings starting from 4 feet (120cm) this harvester is narrow enough to harvest one row without compacting the root zone of the adjacent cane row. The A4000 is compact, light, has excellent manoeuvrability and an excellent base cut resulting in reduced cane loss and increased productivity in subsequent ratoon crops. The light weight compact machine enables to harvest in partially wet fields thereby increasing its ability to harvest under varied conditions.



Cleanest Cane



Maximum Returns



High Fuel Efficiency



Best-in-Class Quality-Reliability



Quality Care at Door Step



Total Control

A front view of a red crawler-mounted harrow. The machine features a central operator's cab with a black metal safety cage and two side mirrors. The harrow consists of two large, red, cylindrical drums with multiple horizontal tines. The drums are mounted on a central frame. The machine is equipped with a large, red, star-shaped blade at the rear. The front view shows the harrow's tines and the central frame. The machine is labeled with numbers 1, 2, 3, and 4.

- 1 **Crop Dividers:** Two pairs of crop dividers have been provided, to enable separation of the sugarcane row that is being harvested from the adjacent row and lift the lodged cane stalks to facilitate the feeding operation.
- 2 **Knockdown Roller:** Inclines the cane stalks to be cut, facilitating the base cutting operation and the initial feeding of the machine.
- 3 **Feedroller (finned):** Aligns the cane stalks and helps the feeding of the cane stalks immediately after they are severed by the base cutter.
- 4 **Basecutter:** Ensures flushed to ground level cane harvesting through appropriately tilted base cutter discs and also enables feeding of the harvested cane stalks to the butt-lift roller.
- 5 **Butt Lifter Roller:** Lifts the sugarcane stalks cut by the base cutter and guides them into the machine feeder train.

6 Topper: Cuts the tops and throw away on the ground, on left or right hand side.

7 Feed Rollers: Transport and feed the cane stalks to the chopper drums.

8 Chopper Drums: A pair of chopper drums consisting of 3 blades each cuts the sugarcane into billets and throw the billets into elevator bowl. the chopper provides clean cut billets through its differential speed cutting mechanism.

9 Extractor: Equipped with Anti-Vortex fan the Extractor cleans the billets through suction of the extraneous matter from the billet cane charge chopped and cascaded by chopping drums towards extractor bin through a strong upward air draft created by the fan.

- 10 Elevator Table:** Pivots the elevator to the machine and supports side ways and up-down movement.
- 11 Elevator Bowl:** Receives the sugarcane billets from the chopper and feeds the elevator.
- 12 Elevator:** Transport the billets from the elevator bowl to the Infield Transporter. Its perforated elevator floor aids the removal of mineral impurities.

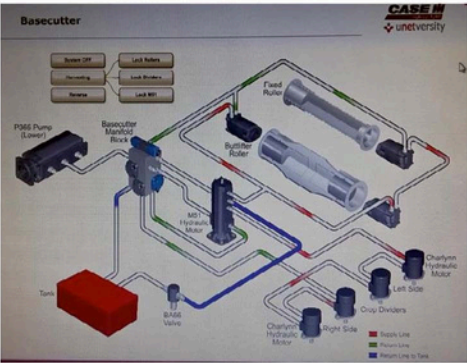
13 Bin Flap: Directs the cane billets from elevator into the Infield Transporter and improves the distribution thereby increasing the loading density.

NEW ADVANCED FEATURES

Find out more about the Austoft 4000 Tx



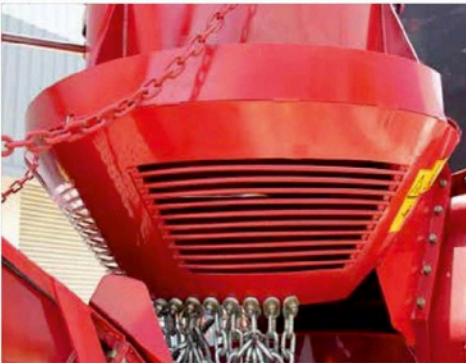
Pre Cleaner Protection guard
Additional safety against cane hitting



Uniflow Hydraulic System
Improved and uniform power to harvesting & cleaning system



Heavy Duty Motor Mounting Chassis
Improved Reliability & Durability of chassis



Turbo Air Drag Cleaning System
Better extraction of trash resulting in cleaner cane billets



Chopper Flywheel Cover
Additional protection for chopper flywheel



Relocated Dip Stick
Ease of access & frequent opening of bird cage avoided



Bigger Tyre
Improved stability and better life (16.9 x 28 tyres)



Improved Bird Cage Sealing
Engine safeguarded from trash entry, improved productivity & safety

ADVANCED FEATURES

Find out more about the Austoft 4000 Tx



Elevator Rubber Flap
Avoids the billets from falling onto the ground during Infilder filling



Heavy Duty Extractor Hood
Improved reliability of cane trash extraction system



Bigger Radiator
Increased cooling efficiency



Cabin Windshield Guard
Effective protection of cabin windshield from cane hits



Hermetically sealed Engine Compartment
No trash entry, improved engine life, less engine heating



Disc-O-Gather Topper*
Ensures excellent removal of Tops resulting in less trash going into machine & reduced fuel consumption

*Optional variant, The base variant machine is equipped with standard topper and Special Edition machine comes with Disc-O-Gather Topper.

NEW PREMIUM FEATURES

Find out more about the Austoft 4000



FLEXIBILITY, RELIABILITY AND COMFORT.

EXCELLENT COST-BENEFIT

The Austoft 4000 is compact in size as compared to the conventional models of Case IH and is easy to move between cane fields. The Austoft 4000 was designed with the same functional concept as the A8000 Series harvesters. Because of this, many of its parts are interchangeable with other models of Case IH sugarcane harvesters. This characteristic significantly increases the machine's cost-benefit ratio thereby providing value for money to the entrepreneurs

EASY & FAST TO SERVICE

The Austoft 4000 was designed for easy & simple maintenance. The engine, hydraulic system, and critical components are easily accessible thereby streamlining the machine's preventive maintenance resulting in increasing the machine's availability for harvesting.

COMFORT FOR THE OPERATOR

For greater productivity, the Austoft 4000 has a well designed and comfortable AC cabin. The ergonomically positioned controls, the deluxe seat and excellent overall field visibility provide optimum comfort and ease of operations to ensure long uninterrupted operations.

Antivortex Fan™ *(Standard)*

AUSTOFT 4000 is equipped with a four-blade Antivortex fan, globally it is the most efficient trash removal technology from the harvested cane. It not only reduces the amount of extraneous matter in the billet cane significantly than other methods but also the Antivortex system substantially reduces the power consumption in the harvester's cleaning system.

- Excellent cleaning - minimal trash
- Less vibration of extractor hood - More life
- More extractor blade life
- Reduced load – less operating RPM of the fan @1400RPM
- Fuel saving
- Improves loading capacity of transport thus lowering the operating costs.

AUSTOFT®
SUGARCANE
HARVESTER



Powered by



AUSTOFT
4000Tx

SPECIFICATIONS

NEF Austoft 4000 Tx			
ENGINE		FEED ROLLERS	
Make	FPT Industrial	Number of Rollers	11
Series	NEF	Number of Rollers on the roller train	8
Power (HP / Kw)	167 / 125	Drive	Hydraulic and reversible
Cylinder Volume	6.7 L	Upper Rollers	Floating
Number of Cylinders	6	EXTREME CHOPPER	
Aspiration	Turbo/Aftercooler	Number of Knives per Drum	3
TRANSMISSION		Deflector Plate	Adjustable
Type	Hydrostatic	KNOCKDOWN ROLLER	
Travel speed	16km/h	Height	Adjustable
CAPACITY		Angle	51°
Fuel Tank	210 L	EXTRACTOR	
Hydraulic Oil Tank	130 L	Extractor Fan Type	Anti Vortex™
TYRES		Hood	Directional
Front	10.5X16 8-ply	Extador Motor	Turbo
Rear	16.9X 28 R-1 10-ply	ELEVATOR	
TOPPER		Drive	Hydraulic and reversible
Gathering Discs	2	Turning Angle	170°
Height Variation	1050 to 3000 mm	AC CABIN	
Height Adjustment	Hydraulic	No of Doors	2
Severing Drum	Bi-Directional	No. of Lights	7
LIFT-O-MATIC-CROP DIVIDERS		Windshield Wiper	1
Twin Crop Dividers	Yes	Sky Watch	Yes
Distance Between the Tips	1.100 mm		
Spiral Angle	30º		
Height Adjustment	Hydraulic		
Lower Section	Hardened		
BASE CUTTER			
Drive	Hydraulic and reversible		
Number of Discs	2, identical and reversible		
Number of Knives	8, removable, 4 edged		
Distance Between Center of Discs	495 mm		

AUSTOFT
4000Tx

