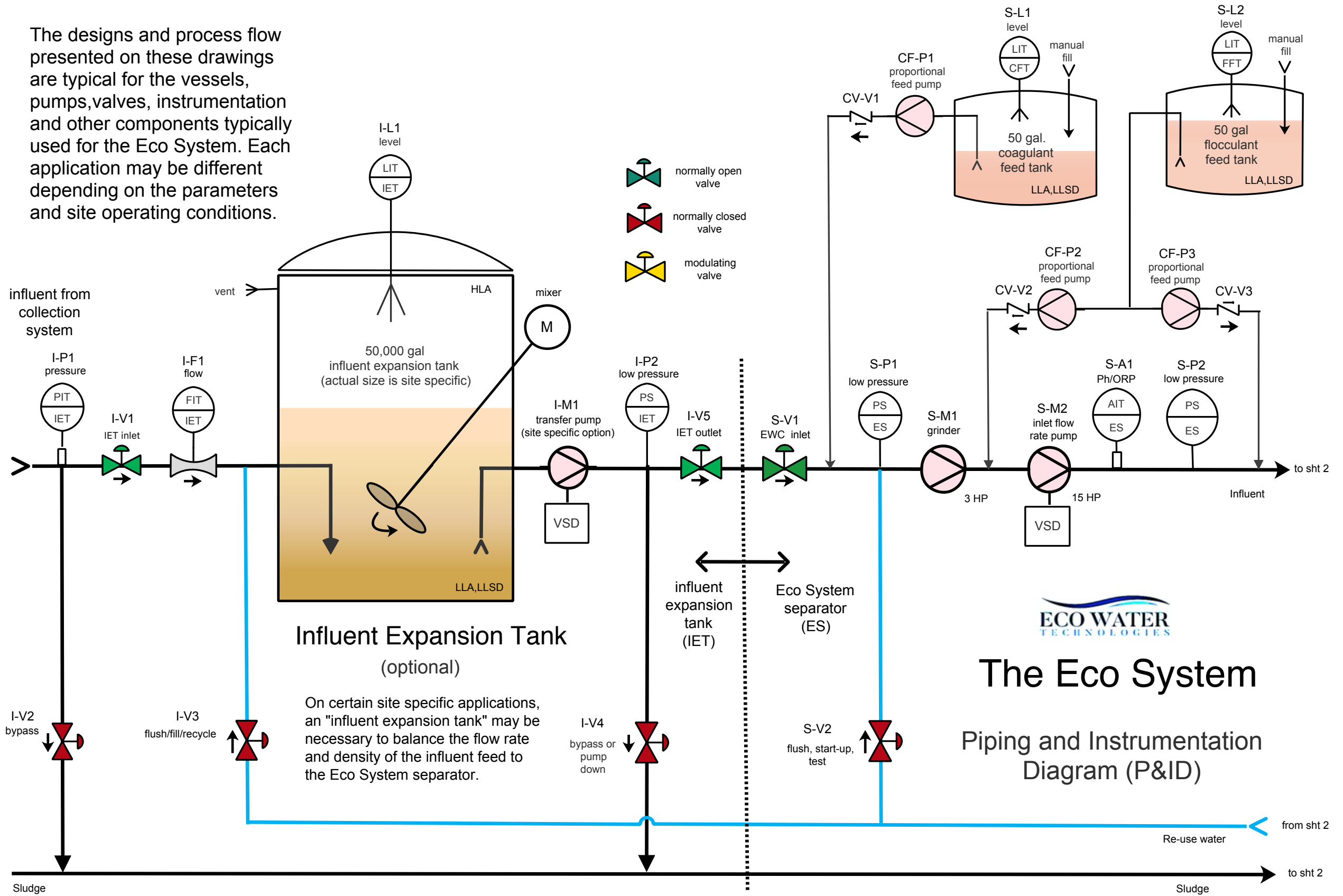


Abbreviations	
EWTC	Eco Water Technologies Corp.
ES	Eco System
UF	ultrafiltration
NF	nanofiltration
FIT (FXX)	flow indicator transducer
IET	influent expansion tank
PS (PXX)	pressure switch
APS (PXX)	air pressure switch
PIT (PXX)	pressure indicator transducer
V (VXX)	valve
M (MXX)	pump/motor
LIT (LXX)	level indicator transducer
AIT (AXX)	analytical indicator/transducer
VSD	variable speed drive
FWT	flush/backwash water tank
CFT	coagulant feed tank
IET	influent expansion tank
FFT	flocculant feed tank
FWT	flush/backwash water tank
HFT	hypochlorite feed tank
AFT	acid feed tank
CFT	caustic feed tank
CST	cleaning solution holding tank
HLA	high level alarm
LLA	low level alarm
LLSD	low level shutdown
CF (CF-PX)	chemical feed pump
CV (CV-X)	check valve
CIP	clean in place
FV	flotation vessel
HC	hydrocyclone
DS	disc filter

The designs and process flow presented on these drawings are typical for the vessels, pumps, valves, instrumentation and other components typically used for the Eco System. Each application may be different depending on the parameters and site operating conditions.



THIS DRAWING CONTAINS PROPRIETARY INFORMATION OWNED BY ECO WATER TECHNOLOGIES CORP. AND IS SUBMITTED UNDER A CONFIDENTIAL RELATIONSHIP AND MAY NOT BE USED OR DISCLOSED UNLESS EXPRESSLY GRANTED BY ECO WATER TECHNOLOGIES CORP.



Drawing not to scale

Development Software - Edraw Max (.eddx)
Drawing Format 11" X 17" ANSI B Tabloid

3	3/17/2019	add hydrocyclone & DF #1
2	2/2/2019	add flotation vessel
1	12/27/2017	release for publication
0	11/25/2017	for review only
rev	date	description



150 North Federal Hwy
Suite 200
Fort Lauderdale, FL 33301

title Influent Expansion Tank and Chemical Feed
Piping and Instrumentation Diagram (P&ID)

Eco Water Technologies Corp.

date	drawing by	drawing no.	sheet	rev
11/25/2017	WWY	EWC2003PID	1/5	3