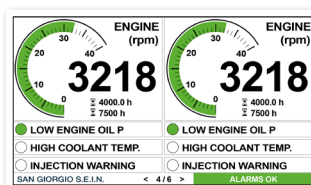
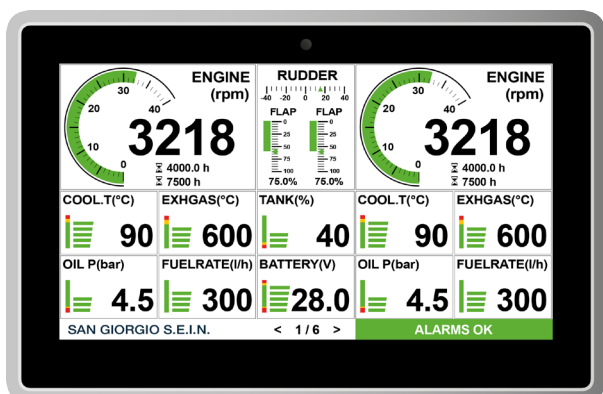


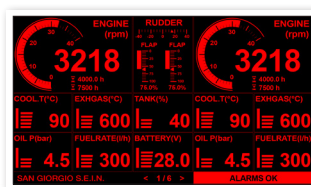
7" Multifunction display

UNS10193

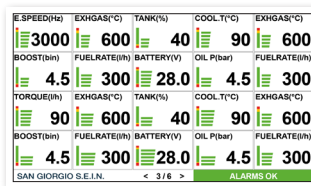
The new multifunction system offers a 7 "touch screen display with integrated ambient light sensor and special software designed for visibility in any light and operating condition. A selection of analog inputs and digital outputs allow direct acquisition of measure sensors without any additional signal converters. Two J1939 CAN Bus ports, one also compatible with NMEA2000 standard, can be used to interface multifunction navigation systems. It can be customised and programmed via USB interface. The system can be controlled remotely via our UNS10400 CAN Bus keyboard.



Monitoring control
Monitoring up to two engines



Customisable pages
Page with digital instruments in night mode



Monitoring levels
Monitoring levels and bilges with bar indicator

Technical features



Display	7" TFT LCD, 800 x 480 pixel, high brightness 700cd
Touch screen	Capacitive
Inputs-Outputs	4 x Analog inputs 0-10V / 4-20mA 4 x Analog inputs 0-300Ω 2 x Frequency inputs W alternator / Pickup 5 x Digital inputs / Outputs
Communication ports	2 x CAN Bus 2.0B 1 x NMEA0183 1 x RS232/485 1 x USB OTG
Power supply	9/36 V - 500mA average
Dimensions	188 x 123 x 69mm with harness
Mounting hole	178 x 114mm
Operating temperature	-20 +70 °C
Protection grade	IP65
Weight	840g