



# Great Minds Together



## LEARNING DISABILITY & TRAUMA INFORMED INTERVENTION MODEL

This is a basic summary of our LD Trauma Informed intervention model, however it will be regularly reviewed (daily) and bespoke to every young person to ensure a person centred approach is adopted at all times. Some young people may move through phases quicker than others and so the model itself is not restrictive.

A multidisciplinary wraparound team, supporting families, schools and services to ensure better outcomes for children and young people

## OUR TEAM

Great Minds Together adopt a person centred and solution focussed approach at all times. The young person's voice must always be the loudest. We operate a multidisciplinary team of staff, volunteer's and graduates made up of Psychologists, Social Workers, Teachers, Mentor's and Therapists and adopt a multiagency approach to ensure better outcomes for children and young people with SEND and/or SEMH needs. In addition families can be allocated a "Family Wraparound Co-ordinator" where families have multiple services involved, in order to ensure effective sharing of information and that parents are supported and treated as the experts they are. The wraparound support is also extended to all professionals involved in order to support and upskill continually throughout our involvement.

## OUR OFFER

- Free wraparound support for families
- Tier 4 prevention interventions (Supported by NHSE)
- Local Authority support, independent evaluation and implementation of recommendations (SEND & Safeguarding Improvement & Development programme)
- Support for students at risk of exclusion
- Match funded Intervention programs, assessments and therapies for schools and services
- Bespoke affordable training for schools and services
- Mediation / Family Group Therapy / Life Story Work
- Life Skills curriculum
- OPTIONS Programme (Opportunities, Pathways and Training Inclusive Of Neurodiversity and SEND)
- Match funded EP Assessments
- CCE & CSE support and intervention work
- Specialist Forensic CAMHS LD TiC staff for complex cases

## CONTACT US AT:

Email: [info@greatmindstogether.co.uk](mailto:info@greatmindstogether.co.uk)  
Website: [www.greatmindstogether.co.uk](http://www.greatmindstogether.co.uk)  
Twitter: @greatmindsmcr

## KEY PARTNERS

- NHSE
- The Council for Disabled Children & DfE
- Manchester Metropolitan University
- Bradford University
- Leeds University
- Action4SEND
- Parent Champions
- One Million Mentors
- National Lottery Community Fund
- New Skills Academy
- Skills Builder Partnership
- Apple

## PHASE ONE

- Case intake
- Developmental history
- Initial consultation with parent/carer/professionals
- Initial consultation with young person
- Attendance at MDT /Care planning meeting to discuss bespoke programme recommendation

## PHASE TWO

- Week 1-2 - Stabilisation and relationship building: Staff team/Young Person / Family and Professionals
- Establish Multiagency Clinical Supervision / Develop behaviour analysis programme
- Development of Great Minds Passport & Multiagency Support Plan (MASP)

## PHASE THREE

- Week 3 - 4 - Attachment behaviours are likely to present and this period can be challenging
- Ensure therapeutic approach is adopted at all times and trust and safety baseline is established
- Implement targeted intervention centred around trusted relationships and understanding. Support, listen and re-assure
- Psychologist input and report to be carried out during these weeks
- Ensure all necessary agencies are involved and any unidentified needs are established

## PHASE FOUR

- Weeks 5-6 - Establishing a baseline
- Involve family and other professionals in wraparound support and identify gaps in knowledge and support / upskill

## PHASE FIVE

- Re-integrate a routine / education / community access / peer support
- Begin aspirations pathway and link with all relevant agencies
- Progress report and research data analysis - fortnightly progress assessment

## PHASE SIX - CONTINUE ASPIRATIONS PATHWAY AND CONTINUAL MULTIAGENCY INVOLVEMENT AS LONG AS REQUIRED

# Overview of our model



The Great Minds Together model by its own definition is a multidisciplinary, multi-agency, working together model. No decision on a pathway for a child or young person should be made by one individual.

The approach will always be a collective one, and where possible work together in partnership with parents and carers at all times.

There are two types of approaches:

The medical model

The social model

The Great Minds Together model is a **social model**

We are not here to condition young people to behave a certain way. We exist to educate people on how to adapt their behaviours as adults, and environments to meet the young person's needs.

All of our interventions are person centred and child-led, meaning that the child or young person must have the strongest voice in their own plans, and this must also be reflective in all documentation.

Each young person should have:

- A Great Minds Passport (GMPP)
- A Multi-agency Support Plan (MASP)
- Ongoing recording documents of intervention including progress and strategies used
- The chance to input into plans throughout the intervention of support
- All documents should include the child's voice, with the MASP and GMPP written in the first person and quotations from the child/young person present throughout the documents.

# Overview of our model



All of our interventions adopt a holistic and therapeutic approach.

The most important element of the work we do must start with listening to the young person, understanding their needs and working in partnership with them to achieve their aspirations in a calm, relaxing and solution focussed way.

The Great Minds Together model is unique in its identity, it is a therapeutic intervention that is timeless, with the wraparound support implemented for the whole family from the onset which continues for as long as they need it.

The model itself is supported by NHSE and currently being implemented across multiple local authorities in England.

The aim is to ensure better communication across professionals and services, whilst preventing Tier 4 admissions and Police intervention for young people with unmet, unidentified, trauma and attachment needs.

The intervention we provide is a model that listens, understands and bespoke the delivery to the needs of the individual, their family, and the professionals around them.



# More about us



Great Minds Together are a not-for-profit organisation that aims to be the first independently funded model that forms a statutory part of the system itself.

As an organisation, along with our many partners, we are working at Parliamentary level to achieve this goal.

There are many strands to the organisation which can be found on our two websites:

[www.greatmindstogether.co.uk](http://www.greatmindstogether.co.uk)

[www.autismpeer.education](http://www.autismpeer.education)

The overall ethos and values are to ensure a multiagency approach is always adopted. We are an evidence-based organisation and have already collated a significant amount of evidence that shows a wraparound support system for families and professionals, someone that knows everything that is happening for the family, efficient co-ordination of services to ensure effective sharing of information results in better outcomes for children and young people that are at the heart of everything we do.

# Organisations Values



Behind every behaviour, there is a need. It is our mission to ensure those needs are identified, understood and all adults involved with a child are supported to upskill their knowledge and understanding of the need behind the behaviour.

All behaviour is communication of need.

All staff and agency workers under Great Minds Together have experience and knowledge on Learning Disability, Autism, Trauma informed Care and Demand Avoidant Profiles.

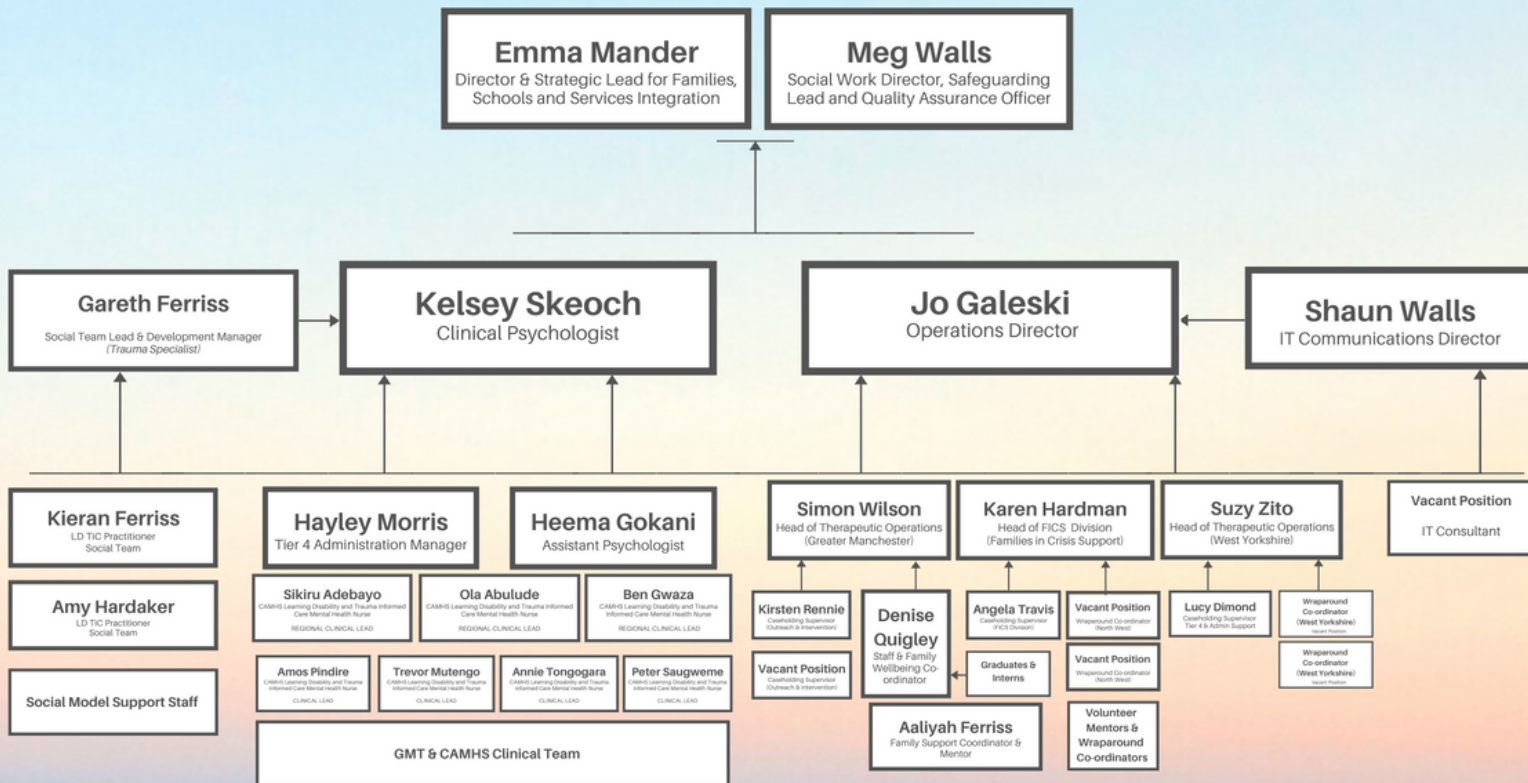
All children and young people are treated with respect and understanding. Our approach is always calm. We do not operate a 'disciplinarian' approach under any circumstances, and we do not implement punishments or consequences for children that cannot help their behaviour as a result of unmet needs, unidentified needs or trauma-based behaviours.

There are a variety of different departments across Great Minds Together, and all new staff are required to shadow other team members for a period of time whilst learning our model, as well as completing a variety of training sessions and CPD certifications.

Our clinical team is lead by a Clinical Psychologist, and senior specialist practitioners in Learning Disability, Autism and Trauma informed Care.



## Organisational Structure





## The Great Minds Model ©



[www.greatmindstogether.co.uk](http://www.greatmindstogether.co.uk) | 0161 549 1169 | [info@greatmindstogether.co.uk](mailto:info@greatmindstogether.co.uk) | 12537458

# OPTIONS Programme

For students at risk of exclusion / struggling to engage in the national curriculum and have SEND/SEMH needs

## Opportunities Pathways & Training Inclusive Of Neurodiversity & SEND

### Match funded spaces available

2.5 days per week

OPTIONS Programme on-site attendance at one of our centres

CPD Certifications in personal & professional development

CPD certifications in line with the young person's aspirations

Growth Mindset Programme to increase confidence, engagement, learning and attainment.

### OPTIONS & Outreach Programme

Bespoke OPTIONS Programme

CPD Certifications in personal & professional development

CPD certifications in line with the young person's aspirations

Growth Mindset Programme to increase confidence, engagement, learning and attainment.

Work-based learning opportunity facilitation (1 day per week from term 2)

Full outreach wraparound support for families

#### OPTIONS

##### Opportunities, Pathways and Training Inclusive of Neurodiversity and SEND

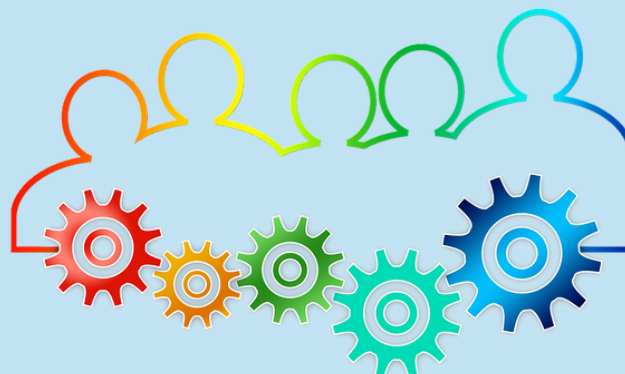
Great Minds Together have created a new vocational route to further education or employment for pre and post 16 students with Special Educational Needs and Disabilities (SEND) and/or Social, Emotional and Mental Health (SEMH) needs to ensure better outcomes and a more achievable route to Apprenticeships and Traineeships. The OPTIONS programme will act as an alternative to GCSE's as an 'Access' course to further vocational education routes. This route to further education and work-based learning will be able to support these students nationwide.

The OPTIONS programme is made up of three components:

- 1- CPD certifications in personal and professional development as well as CPD certifications in the young person's chosen industry reflective of their aspiration.
- 2- Mentor support to assist with increasing engagement and attainment in core subject matters. Also ensuring a positive mindset and increased self-esteem via our Growth Mindset programme, whilst helping professionals and family members to understand the best way to support the young person in order to ensure positive outcomes by attending and hosting multi-agency meetings.
- 3- Work-based learning, assistance with careers advice, travel training and building links with local and relevant workplaces to allow the young person to gain relevant experience in their chosen industry.

Who is the OPTIONS programme aimed at?

Our OPTIONS programme is for pre and post 16 year olds, where the academic route may not be right for them. It provides emotional and practical support pre and post 16 that is critical for students with SEND and/or SEMH needs. Students do not have to have an EHC Plan, and students that may be (or may have been) on the schools SEN register can also benefit from this support. Our OPTIONS and Outreach programme includes a Family Wraparound co-ordinator providing full wraparound support for all the family. Our wraparound programme has a 96% success rate in securing sustainable post-16 destinations.





GREAT MINDS TOGETHER

# LIFE SKILLS CURRICULUM



*Published by Great Minds Together*

© Great Minds Together

Great Minds Together is an organisation supporting families, schools and services to ensure better outcomes for children and young people.

We offer a variety of services via our Life Skills programme including:

Prevention programme - Life Skills Curriculum (Activity based, interactive learning sessions)

Intervention programs for students with SEND and SEMH needs

Training for professionals on various subjects i.e. Trauma informed practice, understanding SEND & SEMH needs, Adopting a Growth Mindset approach in your setting, Effective communication & information sharing plus many more...

Over 1000 CPD courses for professionals & young people

OPTIONS Programme, for students that require a more vocational pathway, includes pre and post 16 support




FICS (Families in Crisis Support) - Free practical support for families in need

## CONTACT DETAILS

### Contacts

Emma Mander  
emmamander@greatmindstogether.co.uk  
Meg Walls  
megwalls@greatmindstogether.co.uk  
Joanne Galeski  
jogaleski@greatmindstogether.co.uk

### Find us at

 @greatmindstogether  
 @greatmindstogether  
 @greatmindsmcr  
www.greatmindstogether.co.uk  
info@greatmindstogether.co.uk

## Terms & Modules

### Life Skills

# 1

#### Home Toolkit

- The basics of running a home
- The costs of running a home
- Safety in the home
- Shopping
- Personal care
- The importance of community
- Neighbourhood watch

# 4

#### Social & Emotional wellbeing Toolkit

- Social confidence
- Self care
- Mindfulness
- Health & Wellbeing
- Caring for the environment

# 2

#### Money Toolkit

- The difference between rent & mortgage
- Comparing the market
- The importance of saving money
- Understanding credit
- What is insurance & what does it cover?

# 5

#### Online Toolkit

- E-safety
- Benefits & pitfalls of social media
- How to conduct yourself online
- How your online persona can affect your future
- Appropriate content
- Understanding the difference between social media platforms
- Online restrictions

# 3

#### Entrepreneurial Toolkit

- Turning an idea into income
- How to earn money
- Understanding selling sites
- The business model
- Building a foundation
- Understanding the basics of financials

# 6

#### Basic skills Toolkit

- Manners & Etiquette
- Life administration
- Basic First Aid
- Green cross code
- Politics
- Personal & Professional development
- Practical skills around the home and garden

# Life Skills Curriculum

## BOOKINGS & REFERRALS

### Packages

For bespoke packages please contact:  
**info@greatmindstogether.co.uk**  
**0161 549 1169**  
**www.greatmindstogether.co.uk**

For referrals please complete our referral form:  
**<https://greatmindstogether.co.uk/referral-form>**

### Our Mission Statement

Our mission and core ethos as an organisation is to change a generation,  
change a culture and create a new future for our children.

Our aim, as an organisation is to help resolve the SEND & SEMH crisis in the UK and we are already working with a number of schools and Local Authorities providing both Prevention and Intervention programs. We are evidence based to promote better outcomes for **all** children.

The aspiration of our organisation is to ensure the children on our programme will be strong and knowledgeable on all things life throws their way as well as socially and emotionally confident.

Not only will they leave school with a full understanding of the way life can take them, they will also be prepared when they face challenges that our generation has had to figure out for ourselves.

We will set their expectations and they will feel confident to succeed in anything they do.

If they have no money at a point in their life, they will have learnt how to create it themselves.

They will learn to try anything once, to ask questions and to always study for self development even after their education has finished.

They will know what to do when their outgoings exceed their income.

They will know how to save money and how to be savvy with credit.

They will know how to be healthy, both in body and mind, and most importantly why this is crucial to a happy life.  
After all, happiness is success.

We hope our children will create a new, more positive world and a better climate for themselves and their own children.

As we look around the world as it is today there is a strong need for change,  
and where better to start when changing a future than the people who are going to be it.

"If many little people, in many little places, do many little things, They can change the face of the earth"



0161 549 1169

GREAT MINDS TOGETHER FICS C.I.C



HM Government

In partnership with

THE NATIONAL LOTTERY  
COMMUNITY FUND



**Great Minds Together**

## **FICS - Families in Crisis Support**

### **Free wraparound support for families**

"Knowledge of what is possible  
is the beginning of happiness"

George Santayana

**Referring to our service:** Referral is made via the referral form on our website [here](#)

- This service is specifically for children that have special educational needs and disabilities (SEND) and/or social, emotional and mental health needs (SEMH) and their families.
- The child must be under 18, or 25 or under where they have an EHCP, however should there be support required that falls outside of this, we will assess on a case by case basis.



@greatmindsmer



@greatmindstogether



@greatmindstogether

[www.greatmindstogether.co.uk](http://www.greatmindstogether.co.uk)

[info@greatmindstogether.co.uk](mailto:info@greatmindstogether.co.uk)

