

Garden America

Slovenia ★ Austria ★ Prague



Soak up the beauty of Lake Bled, Slovenia

The Slovene International Wildflower Festival May 29- June 8, 2022



Join **Garden America** hosts **John Bagnasco, Bryan Main and Tiger Palafox** for a tailor-made springtime garden adventure! This time they are off to Slovenia, Austria and Prague. Your journey starts near the shores of Lake Bled. Nestled in the lower Alps, Lake Bled is one the prettiest spots on

the planet. This is also our jumping off point to explore valleys bursting with wildflowers inside the Julian Alps National Park. The **International Wildflower Festival** offers the most diverse and colorful landscape right before the summer, when a palette of living colors bursts across meadows and the mountain rocks seem like they are blossoming.

From Slovenia we drive north through mountains and vineyards to the famed Lipizzaner stud farm. Our home in Austria will be romantic Vienna! In the springtime, the city gardens are in full bloom and the lively outdoor cafés line the streets.

The adventure continues as we drive deep into the Bohemian countryside. For two days, we'll enjoy the UNESCO World Heritage village Cesky Krumlov and experience the natural beauty of the Czech countryside. Our journey culminates in the towering city of Prague. Don't miss out on this special springtime garden, music and art journey to central Europe with Garden America! Space is limited.



**EARTHBOUND
EXPEDITIONS**

Earthbound Expeditions Inc.

P.O. Box 11305, Bainbridge Island, WA 98110 USA

T. 800.723.8454 / T. 206.842.9775 / F. 206.238.8480

www.EarthboundExpeditions.com



Enjoy the International Wildflower Festival, Slovenia

TRIP AT A GLANCE

3 Nights Stunning Lake Bled, Slovenia
3 Nights Vienna, Capital of Austria
1 Night Cesky Krumlov, Bohemia, Czech Republic
3 Nights Prague, Capital of the Czech Republic



HIGHLIGHTS

The International Wildflower Festival * Stunning Lake Bled in Slovenia * Visits to the botanical and palace gardens of Prague * Julian Alps National Park * Bohinj Wildflower Festival * A Day with Mozart in Salzburg * The Gardens, Music and Museums of Vienna * Wine and beer tastings * Picturesque Bohemian villages * Excursion to the Piber Federal Lipizzaner Stud farm * Charming local dining experiences

IT'S INCLUDED

- * With Garden America hosts John Bagnasco, Bryan Main and Tiger Palafox
- * Guided by an Earthbound Expeditions program director
- * Transport by private coach
- * Outings to museums, concert halls and gardens
- * All breakfasts plus eleven multi-course traditional meals
- * Centrally located, four-star hotel accommodations
- * All excursions guided with knowledgeable local guides
- * All gratuities for your Earthbound Expeditions guide and driver
- * Alumni discounts applied towards future adventures

NOT INCLUDED

International airfare, trip insurance, anything not mentioned in your Garden America itinerary



**EARTHBOUND
EXPEDITIONS**

Earthbound Expeditions Inc.

P.O. Box 11305, Bainbridge Island, WA 98110 USA

T. 800.723.8454 / T. 206.842.9775 / F. 206.238.8480

www.EarthboundExpeditions.com

TRIP FACTS

11 Days / 10 Nights (when including flight)

\$4,495 per person, double occupancy

\$1,150 single supplement

Trip begins on Monday, May 29, 2022 at 6:00pm in Lake Bled

Trip ends on Thursday, June 8, 2022 after breakfast in Prague



WAYS TO SAVE \$250!

Travel alumni save \$100 * Pay by final balance by check and save \$100 * Reserve by January 1, 2022 and save \$50.

YOUR GARDEN AMERICA ADVENTURE BEGINS

DAY 0: Saturday, May 28 – Depart for Slovenia

Remember, you will need to depart the USA for Slovenia no later than today.



DAY 1: Sunday, May 29 - Arrive in Ljubljana, Slovenia: Plan to meet your Garden America hosts, guide and fellow travelers in Lake Bled this evening. Lake Bled is approximately 25 miles northwest of the Ljubljana airport and easily accessible by taxi. Enjoy a traditional Slovenian dinner and orientation this evening!

Sleep in Bled (D)

Day 2: Monday, May 30 - Lake Bled, Castles and Vintgar Gorge

Breathe the sub-alpine air and luxuriate in the gorgeous surroundings! You're at the foot of the towering Julian Alps, where Lake Bled offers up stunning scenery and a perfect location to explore the mountains, lakes and meadows of this magnificent region.

Today's agenda includes an easy two mile walk to Vintgar Gorge. There you'll walk on a flat trail and suspension bridges above a rushing river and powerful cascading waterfalls. Then, we are off to the little island on Lake Bled. The small church on the island dates back to the 10th century, but the present building was built in the 17th century. According to local tradition, a husband who can carry his new bride the 99 steps up from the dock into the church will be ensured a happy marriage, and ringing the bell in the church will make your dreams come true. The way to reach the island is by a special boat called a *pletna*. In the afternoon, you'll



**EARTHBOUND
EXPEDITIONS**

Earthbound Expeditions Inc.

P.O. Box 11305, Bainbridge Island, WA 98110 USA

T. 800.723.8454 / T. 206.842.9775 / F. 206.238 .8480

www.EarthboundExpeditions.com



Discover Romantic Vienna!

“Vienna is a handsome, lively city, and pleases me exceedingly.”
Frederic Chopin

have some options, such as a bike ride around Lake Bled or a visit to the nearby thermal spring and spa. *Sleep in Bled (B, L)*

DAY 3: Tuesday, May 31 - Lake Bled - The International Wildflower Festival

The Julian Alps National Park offers the most diverse and colorful landscape right before the summer, when a palette of living colors bursts across meadows and the mountain rocks seem like they are blossoming.

Enjoy a full day at the International Wildflower Festival before returning to your hotel on Lake Bled. *Sleep in Bled (B, L)*

DAY 4: Wednesday, June 1 - North to Vienna, Austria via the Lipizzaner Stud Farm

After a leisurely breakfast, we depart for the Piber Lipizzaner Stud farm in Southern Austria. Lipizzaners are Europe’s oldest cultural horse breed, with their origin going back to the year 1580. The Piber Lipizzaner stud farm draws on over 400 years of accumulated knowledge, allowing the Lipizzaner horses to be bred with the abilities that make them world famous, especially through their cooperation with the Spanish Riding School.

After our visit and lunch with a sampling of local wines, we drive north to the romantic capital city of Austria- Vienna! *Sleep in Vienna (B, L)*



**EARTHBOUND
EXPEDITIONS**

Earthbound Expeditions Inc.

P.O. Box 11305, Bainbridge Island, WA 98110 USA

T. 800.723.8454 / T. 206.842.9775 / F. 206.238 .8480

www.EarthboundExpeditions.com



Explore the Gardens and Belvedere Palace



Day 5: Thursday, June 2 - The Heart of Vienna

This morning we set out to explore the heart of Vienna by foot. Our walking tour will include the Mozart House and towering Saint Stephan's Cathedral. Our journey continues past the State Opera House to a unique, tropical oasis, the Imperial Butterfly House. In one of the most beautiful Art Nouveau palm houses in the world, you'll enter a fantastic environment of adventure and excitement populated by one of nature's most gentle and colorful creatures, the butterfly.

The afternoon is yours to explore Vienna at your own leisurely pace. We suggest a visit to the Museum of Natural History or Museum of Fine Arts. The Museum of Fine Arts ranks among the richest and most important art collections in the world. In its corridors, you'll find dazzling works by Bruegel, Rubens, Rembrandt, Vermeer, Dürer, Raphael, Titian and Velazquez.

This evening, we'll enjoy dinner together in a medieval wine cellar frequented by Mozart and Haydn. *Sleep in Vienna (B, D)*

Historic Note: Born in Bonn in 1770, Beethoven was 17 years old when he first traveled to Vienna to study under Mozart. There is evidence that Beethoven lived in more than 60 different places (some sources mention at least 80) during his 35 years in Vienna.



**EARTHBOUND
EXPEDITIONS**

Earthbound Expeditions Inc.

P.O. Box 11305, Bainbridge Island, WA 98110 USA

T. 800.723.8454 / T. 206.842.9775 / F. 206.238.8480

www.EarthboundExpeditions.com



Spend a Day in the Village of Cesky Krumlov



Day 6: Friday, June 3 - The Belvedere Museum Gardens & the Botanical Gardens

Vienna's stunning Belvedere Palace is home to the world's largest collection of paintings by Gustav Klimt, Monet and Manet. After touring this very fine museum we set out to explore the nearby gardens.

The Botanical Garden of the University of Vienna covers 8 hectares and is immediately adjacent to the Belvedere gardens. Established by Maria Theresa in 1754, visitors can look forward to about 12,000 types of plants from six continents. Among other things, the garden serves as a place for scientific research and species protection, as an urban habitat for indigenous animal species and as an oasis of recreation in the heart of the city. *Sleep in Vienna (B)*

Day 7: Saturday, June 4 - The Natural Beauty of Bohemia, Czech Republic

Our home for the evening is the historic village of Cesky Krumlov. Situated on the banks of the Vltava River, this hamlet was built around a 13th century castle with Gothic, Renaissance and Baroque elements. It is one of the most charming, central European villages and a UNESCO World Heritage site. Stroll down the merry lanes, visit a Bohemian crystal shop or sample one of the many delicious Czech beers. *Sleep in Cesky Krumlov (B, D)*



**EARTHBOUND
EXPEDITIONS**

Earthbound Expeditions Inc.

P.O. Box 11305, Bainbridge Island, WA 98110 USA

T. 800.723.8454 / T. 206.842.9775 / F. 206.238.8480

www.EarthboundExpeditions.com



Day 8: Sunday, June 5 - North to the Towering City of Prague via the Dvorak Villa

This morning, we'll make our way north towards the soaring spires of Prague. Arguably Europe's most beautiful city, Prague is the birthplace of Franz Kafka and the city Mozart loved best. It's also our home for the next three nights. En route we'll stop at Vysehrad, the mythological birthplace of Prague, which

features a large park with trails and ruins of the old fortress and gates. Once inside the park, we'll visit the cemetery to pay our respects to the great Czech composers, Smetana and Dvorak. To celebrate our first evening in Prague, let's enjoy a traditional dinner together in one of Prague's most famous beer halls. *Sleep in Prague (B, D)*

Day 9: Monday, June 6 - Old Town Prague and Jewish Quarter

Our walking tour of Prague begins in the medieval center. The Old Town Square has been Prague's heart since the 10th century and was its main market place until the beginning of the 20th century. Within the Old Town Square, you'll discover a massive monument to Jan Hus, the Church of St. Nicholas, and the gothic Old Town Hall with its medieval astronomical clock and calendar.

Our exploration of Prague continues with a tour of Prague's historic medieval Jewish Quarter. The Old New Synagogue, built around 1270, is the oldest active synagogue in Europe and one of Prague's earliest Gothic buildings. The Old Cemetery, founded in 1478, is Europe's oldest surviving Jewish cemetery and is a highlight of the city tour. After the walking tour, you'll have some free time to explore the quaint lanes of this captivating capital. Meet this evening for an included classical concert. *Sleep in Prague (B, L)*

Day 10: Tuesday, June 7 - Charles Bridge, Prague Castle and Gardens

We have a full and exciting day ahead of us, so let's get going early!

Prague Castle dates back to the 9th century and is the largest ancient castle in the world. The castle has served as the seat of power for kings of Bohemia, Holy Roman emperors, presidents of Czechoslovakia, and the president of the Czech Republic even today. The Bohemian Crown Jewels are also kept here.

Enjoy an in-depth tour of the castle before sitting down together for a farewell lunch.



**EARTHBOUND
EXPEDITIONS**

Earthbound Expeditions Inc.

P.O. Box 11305, Bainbridge Island, WA 98110 USA

T. 800.723.8454 / T. 206.842.9775 / F. 206.238.8480

www.EarthboundExpeditions.com



Explore Prague for three days

After lunch, our journey continues as we set out to explore two of the city's top gardens. Vrtba Garden, created around 1720, is one of the most beautiful Baroque gardens in Prague. Though one of the city's smaller gardens, Vrtba Garden's unique architectural design on an irregular slope, as well as the artistic and historical value of its decoration, ranks it of high importance in Europe.

We then visit the charming Franciscan Garden. The garden dates back to the 14th century when the New Town was being built. It was completely restored in the early 1990s and now serves as a public garden with benches, trees and lots of rose bushes. *Sleep in Prague (B, L)*

**Note: Flights normally depart Prague quite early. You may wish to have an early night this evening in preparation for your trip home.*

Day 11: Wednesday, June 8 - Your garden journey concludes

Your garden journey concludes after breakfast this morning.

~ Trip Itinerary Details May Change ~

SCHEDULE NOTES: Earthbound Expeditions is not responsible for any changes regarding the program, performers, times and/or dates which the concert organizers may alter. If for reasons beyond our control a concert is changed or cancelled a substitute concert will be found.

Hosted Journeys: If a host or special guest is unable to attend as planned, Earthbound Expeditions will do its utmost to find another host who has similar interests, talents expertise. The inability of a host to participate in a tour is not grounds for a full or partial refund. Read the full terms and conditions [here](#).



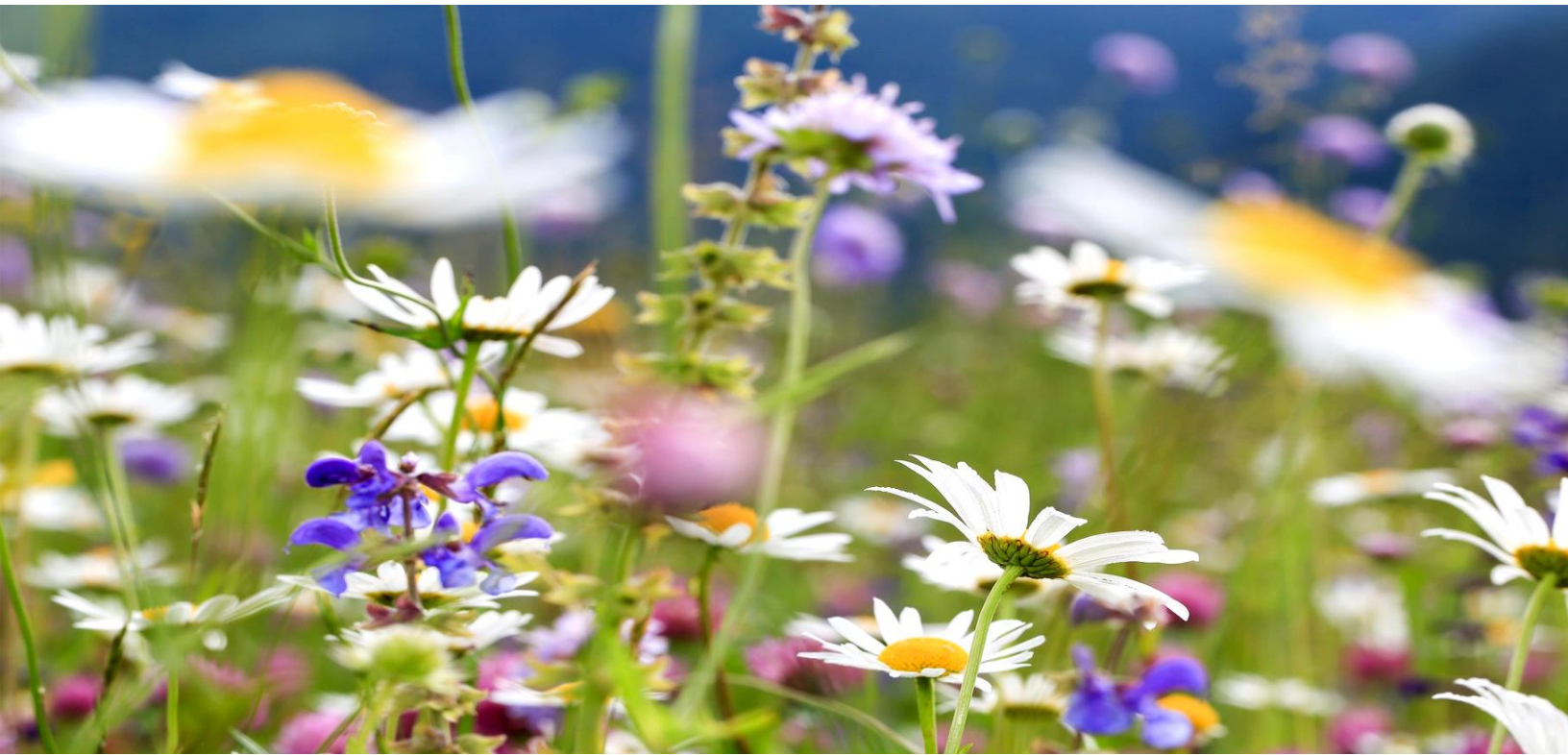
**EARTHBOUND
EXPEDITIONS**

Earthbound Expeditions Inc.

P.O. Box 11305, Bainbridge Island, WA 98110 USA

T. 800.723.8454 / T. 206.842.9775 / F. 206.238 .8480

www.EarthboundExpeditions.com



The Bohinj International Wild Flower Festival

More than 1000 different plant species grow in the Bohinj Region. They belong to the so-called Alpine-limestone flora, which is among the richest in Europe. Some plant species only grow in the Bohinj Region, and thus they were named after Bohinj or Mt. Triglav.

The International Wild Flower Festival program is very diverse and offers various events, workshops, cultural events, lectures, exhibitions and other activities; however, the heart of the festival are short and long walks, where we can really feel the richness of flora in Bohinj. Although there are many reasons to visit the festival, one of the main ones is the diversity of flowers that still grow in the Alps.

There are 84 different types of wild orchids growing in Slovenia, and 42 of them grow in the area of the Julian Alps, i.e. also in Bohinj. The flora here is extensive.

Read more about the festival [here](#).

RESERVATIONS & QUESTIONS

800.723.8454

info@earthboundexpeditions.com

www.EarthboundExpeditions.com



**EARTHBOUND
EXPEDITIONS**

Earthbound Expeditions Inc.

P.O. Box 11305, Bainbridge Island, WA 98110 USA

T. 800.723.8454 / T. 206.842.9775 / F. 206.238.8480

www.EarthboundExpeditions.com



Proud Partners Since 2008

Earthbound Expeditions offers customized overseas adventures for universities, museums, garden clubs, and numerous public radio stations. Earthbound Expeditions is committed to supporting environmental education, local small businesses and providing guests with a one-of-a-kind, authentic travel experience. Whenever possible, Earthbound reserves locally-owned hotels, utilizes the talents of local lecturers, and dines in family-owned establishments. Earthbound also supports projects like the Soweto Youth and Development Project of South Africa, the Mama Rosie Orphanage in Cape Town, Maasai Girls Rescue Center in Tanzania and is assisting families and projects in Cambodia, Haiti, Uganda, Zimbabwe and the USA.

Environmental Commitment

Through Earthbound Expeditions' proud partnership with the Carbonfund.org, Earthbound Expeditions makes annual donations so as to help offset a guest's carbon footprint. For every guest who signs up on an Earthbound Expedition, a donation will be made to the Carbonfund.

The Carbonfund.org motto, "Reduce what you can; offset what you can't" fits perfectly with Earthbound Expeditions' long established philosophy of supporting locally-owned businesses, promoting education and embracing the concept of "slow" travel.

By using a simple carbon calculator, Carbonfund.org is able to determine the size of your carbon footprint for any specific domestic or overseas adventure. You then may purchase carbon credits. These credits go towards supporting (1) renewable energy, (2) energy efficiency and (3) reforestation projects.

RESERVATIONS & QUESTIONS

800.723.8454

info@earthboundexpeditions.com

www.EarthboundExpeditions.com



**EARTHBOUND
EXPEDITIONS**

Earthbound Expeditions Inc.

P.O. Box 11305, Bainbridge Island, WA 98110 USA

T. 800.723.8454 / T. 206.842.9775 / F. 206.238 .8480

www.EarthboundExpeditions.com