



In Pursuit of Mozart, Music, Palaces, Museums and Art

A culturally rich journey with hosts, Peter and Kathleen van de Graaff
June 10 - 19, 2026



Join Peter and Kathleen van de Graaff on a ten-day journey tracing the life and music of Mozart! Begin in Würzburg, where the city's famed Mozart Festival fills grand palace halls with timeless music. In Munich, explore Bavaria's rich cultural heritage, from majestic palaces and world-class museums to charming villages that inspired centuries of art and music. Your journey culminates in Salzburg, Mozart's birthplace, where

history, architecture, and music converge in every street and square. Attend stunning classical concerts, delight in local cuisine, and share unforgettable experiences with like-minded friends who celebrate culture, art, and music. Space is limited—reserve your place for this immersive musical adventure!

TRIP AT A GLANCE

3 Nights - Würzburg, Germany
3 Nights - Munich, Germany
3 Nights - Salzburg, Austria



**EARTHBOUND
EXPEDITIONS**

Earthbound Expeditions Inc.

P.O. Box 11305, Bainbridge Island, WA 98110 USA

Tel: 206.842.9775

www.EarthboundExpeditions.com



IT'S INCLUDED

- ❖ Hosted by Peter and Kathleen van de Graaff
- ❖ Guided by Earthbound Expeditions very own, Holger Zimmer!
- ❖ Nine nights, 4-star centrally located hand-selected hotels
- ❖ Tickets to a minimum of four classical concerts
- ❖ Attend the renowned Mozart Festival in Würzburg
- ❖ All breakfast, plus ten additional multi-course meals
- ❖ Private transport by air-conditioned motor coach
- ❖ Travel with like-minded friends who share your passion for culture and music

TRIP FACTS

10 Days / 9 Nights

\$7,495 double occupancy

\$1,995 Single Supplement

Trip begins on June 10, 2026

Trip ends on the morning of June 19, 2026

Not Included: International airfare, travel insurance and any items not mentioned in your custom itinerary



**EARTHBOUND
EXPEDITIONS**

Earthbound Expeditions Inc.

P.O. Box 11305, Bainbridge Island, WA 98110 USA

Tel: 206.842.9775

www.EarthboundExpeditions.com



YOUR CUSTOM MUSICAL JOURNEY BEGINS!

Day 1: Wednesday, June 10 - Welcome to Germany! Frankfurt to Würzburg

Arrive in Frankfurt, where your private motor coach whisks you to the Baroque jewel of Würzburg, a city steeped in history along the Main River. Settle into your charming hotel in the heart of the city, then gather for a welcome dinner paired with Franconian wines, the perfect introduction to the region's culture, cuisine, and musical heritage.

Sleep in Würzburg

Day 2: Thursday, June 11 - Würzburg Residence and Mozart Festival

Step into the UNESCO-listed Würzburg Residence, a masterpiece of Baroque architecture with sweeping staircases, mirrored halls, and ceiling frescoes by Giovanni Battista Tiepolo. Tonight, experience the Würzburg Mozart Festival in the palace's grand hall, where Mozart's timeless compositions resonate in a space built for grandeur and harmony. *Sleep in Würzburg*

Day 3: Friday, June 12 - Vineyards, Villages and Evening with Mozart

Explore the romantic Franconian villages with their half-timbered houses and rolling vineyards that have produced fine wines for centuries. Return to Würzburg for another evening immersed in the Mozart Festival—perhaps a chamber concert highlighting the intimate brilliance of the master's works. *Sleep in Würzburg*



**EARTHBOUND
EXPEDITIONS**

Earthbound Expeditions Inc.

P.O. Box 11305, Bainbridge Island, WA 98110 USA

Tel: 206.842.9775

www.EarthboundExpeditions.com



Day 4: Saturday, June 13 - Journey to Bavaria's Capital, Munich

Travel the Romantic Road, pausing in Rothenburg ob der Tauber and Dinkelsbühl, towns that preserve medieval charm and centuries of cultural history. Arrive in Munich, Bavaria's vibrant capital, where art, music, and history converge. *Sleep in Munich*

Day 5: Sunday, June 14 - Munich: Museums, Palaces and Music

Discover Munich's cultural heart with a guided visit to the Residenz Palace, exploring its art-filled halls, opulent rooms, and historic treasures. Tonight, enjoy a classical concert—options may include the Bavarian State Opera or the Munich Philharmonic—bringing Bavaria's rich musical tradition to life. *Sleep in Munich*

Day 6: Monday, June 15 - Castles, History and Evening Concert

Visit Augsburg, the birthplace of Mozart's father, and explore its Renaissance architecture and historical sites. Return to Munich for an evening performance, whether a recital, chamber concert, or orchestral program, completing your Bavarian experience in true musical style. *Sleep in Munich*



**EARTHBOUND
EXPEDITIONS**

Earthbound Expeditions Inc.
P.O. Box 11305, Bainbridge Island, WA 98110 USA
Tel: 206.842.9775
www.EarthboundExpeditions.com

Day 7: Tuesday, June 16 - Salzburg via Lake Chiemsee and Herrenchiemsee Palace

Journey along Lake Chiemsee to Herrenchiemsee Palace, King Ludwig II's extravagant homage to Versailles. Continue to Salzburg, Mozart's birthplace, where history, architecture, and music converge in a city celebrated for centuries. *Sleep in Salzburg*

Day 8: Wednesday, June 17 - A Day Devoted to Mozart

Begin at Salzburg Cathedral, where Mozart was christened, then stroll Mirabell Gardens, once a setting for aristocratic music and dance. Tonight, enjoy a Mozart Dinner Concert at the candlelit Stiftskeller, combining fine cuisine with the music of Salzburg's most beloved son. *Sleep in Salzburg*

Day 9: Thursday, June 18 - Salzburg: Culture and History

Spend a full day immersed in Salzburg's rich cultural tapestry. Tour Mozart's birthplace and the Mozarteum, explore the Hohensalzburg Fortress overlooking the city, and stroll the historic Altstadt, a UNESCO World Heritage site. Enjoy leisurely time in charming squares, artisan shops, and local cafés, rounding out your understanding of Salzburg's history, music, and architecture. Conclude with a farewell dinner accompanied by the timeless melodies of Mozart. *Sleep in Salzburg*

Day 10: Friday, June 19 - Homeward Bound

Depart for Munich or Salzburg Airport, carrying home memories of palaces, paintings, vineyards, and Mozart's immortal music.



QUESTIONS & RESERVATIONS

206.842.9775

Info@earthboundexpeditions.com

www.EarthboundExpeditions.com



**EARTHBOUND
EXPEDITIONS**

Earthbound Expeditions Inc.

P.O. Box 11305, Bainbridge Island, WA 98110 USA

Tel: 206.842.9775

www.EarthboundExpeditions.com

Know Before You Go!

Reservations and Deposits: A \$1,000 per person deposit is needed to confirm your space on this journey. You can make a credit card deposit online or by phone. Deposits are refundable, minus a \$250 per person cancellation fee, for 60 days from the processing date or 90 days prior to departure, whichever comes first. Deposits made 90 days prior to a trip departing are not refundable. Final payment is due 90 days prior to departure and is non-refundable, which is why we strongly urge guests to purchase travel insurance.

Not Included: International airline tickets, alcoholic beverages, room service and gratuities for hotel staff, travel insurance, meals not listed in brochure, and any activities or items not listed in your itinerary.

Physical Requirements: It is the responsibility of each guest to be aware of their physical abilities or limitations and to be in sufficient good health to undertake the trip. [Click here](#) to read “Is an Earthbound trip right for you?” or call the Earthbound office for more details.

Travel Insurance: Earthbound Expeditions strongly encourages the purchase of travel insurance coverage. We include information on trip insurance in your deposit information.

Weather, Events and Hosted Journeys: If a planned event is cancelled for any reason, the team at Earthbound will do their very best to replace it with another activity. This is not cause for refund. Events are subject to change. Further, if a host or special guest is unable to attend as planned, Earthbound Expeditions will do its utmost to find another host who has similar interests, talents, and expertise. The inability of a host to participate in a tour is not grounds for a full or partial refund.

Terms & Conditions: [Click here](#) to read the full terms and condition



**EARTHBOUND
EXPEDITIONS**

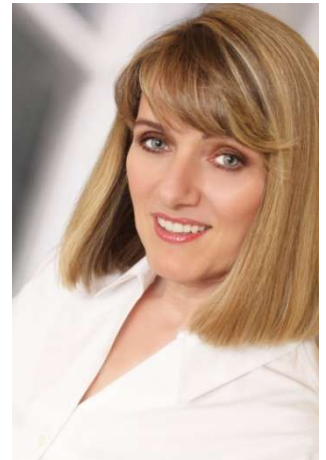
Earthbound Expeditions Inc.
P.O. Box 11305, Bainbridge Island, WA 98110 USA
Tel: 206.842.9775
www.EarthboundExpeditions.com

Meet Your Hosts!



Peter van de Graaff has hosted a nightly show on WFMT for over 35 years and is the program director of the Beethoven Network, which is broadcast on 150 radio stations nationwide. He has hosted many other nationally-syndicated programs and was also the host of live broadcasts from the Lyric Opera of Chicago. Peter was a professional opera singer and has performed with opera companies and orchestras throughout the world. He also has a great interest in languages and speaks Dutch, German and French and has studied many others.

Kathleen van de Graaff, was a professional singer, having performed opera, oratorio and solo recitals throughout the United States, Europe, China, Japan and Central America. She taught at Lake Forest College for 25 years and continues teaching in her private studio. Kathleen and Peter have traveled throughout Europe obtaining scores of early 18th Century chamber operas called "intermezzi". They have subsequently gained notoriety as specialists in this area, performing them throughout the United States, Costa Rica and Asia as well as on live broadcasts over WFMT, Chicago, and have given the modern premieres of many intermezzi by Domenico Sarri, Leonardo Leo, Giuseppe Orlandini and Giovanni Bononcini. Two of these intermezzi, *Mirena e Floro* and *Moschetta e Grullo*, were released in 2007 on Naxos International Record Label. A third opera, *Miride e Damari* can be heard on the Naxos website.



About Earthbound Expeditions

Founded in 1997 by Matthew and Danna Brumley, Earthbound Expeditions lovingly creates tailor-made journeys that inspire curiosity and discovery. Led by expert local guides, travelers explore history, art, food, gardens, and culture in Europe, Asia, Africa, and the Americas. Each trip encourages deep learning and engagement, turning every destination into a classroom of wonder. Guests return not just with memories, but with insights, appreciation, and a renewed sense of curiosity for the world.



**EARTHBOUND
EXPEDITIONS**

Earthbound Expeditions Inc.

P.O. Box 11305, Bainbridge Island, WA 98110 USA

Tel: 206.842.9775

www.EarthboundExpeditions.com