



# Gardens of JAPAN



JC Raulston Arboretum  
AT NC STATE UNIVERSITY





## An Exclusive Journey of Serene Landscapes and Timeless Traditions with JC Raulston's Mark Weathington

***May 18-29, 2025***



From my first foray to Japan, I've been absolutely captivated by the people, the food, the natural and constructed landscapes, and of course, the plants. Oh, those plants. In late May not only will the gardens be spectacular but the roadsides will be in full bloom with snowbells, weigela, and a host of other plants we know and love in our own gardens.

Our upcoming adventure in Japan promises to be an unforgettable journey. We'll begin in the vibrant city of Tokyo, its historical gardens set amidst bustling streets and a neon-lit skyline. We'll travel to Kanazawa and Okayama to marvel at the renowned Kenroku-en and Koraku-en, two of Japan's Three Great Gardens. In Matsue we'll discover the picturesque Adachi Museum of Art, known for its breathtaking garden, seamlessly blending art and nature. Our program concludes in Kyoto, with its timeless beauty, historical quarters, and exquisite gardens such as Ryoan-ji and Kinkaku-ji.

Beyond the gardens, our tour will immerse you in Japan's rich culture and delectable cuisine, offering experiences from tea ceremonies to sake tasting. Plus, all our intercity travel will be aboard the high-speed, very comfortable Shinkansen bullet trains, an essential way to see the countryside and immerse yourself in modern Japanese life.

We look forward to sharing this beautiful experience with you!

*Mark*



**EARTHBOUND  
EXPEDITIONS**

Earthbound Expeditions Inc.  
P.O. Box 11305, Bainbridge Island,  
WA 98110 USA T. 206.842.9775  
[www.EarthboundExpeditions.com](http://www.EarthboundExpeditions.com)





## Tokyo (Days 1-3)

Japan's dynamic capital, where tranquil oases like Shinjuku Gyoen offer a peaceful escape amidst a city pulsing with vibrant energy. The city's dynamism is linked to a history of continuous reinvention. Here, ancient traditions from sake to sumo thrive alongside cutting-edge modernity.

Tokyo's gardens are a serene escape amidst this bustling city, blending traditional Japanese aesthetics with stunning design. The historic Rikugien Garden is known for its beautiful landscapes, inspired by classical waka poetry, and the Hamarikyu Gardens features a tranquil pond fed by seawater from Tokyo Bay. The Shinjuku Gyoen National Garden offers a mix of Japanese, English, and French styles, providing a unique and diverse horticultural experience.

Renowned as the ultimate 'foodie' city, Tokyo also promises a culinary adventure like no other. Get ready to indulge – we know you'll be captivated too.



## Kanazawa (Days 4-5)

Kanazawa effortlessly charms visitors with its rich cultural heritage, artisanal craftsmanship and the national treasure called Kenrokuen. Consistently ranked as one of Japan's three great gardens, Kenrokeun is a must-visit for anyone interested in understanding garden design and culture here.



Japanese refer to the city of Kanazawa as 'Little Kyoto' – a compact city perfectly suited for leisurely strolls through serene streets, where every corner reveals quiet beauty with timeless traditions waiting to be discovered. Famous for colorful Kutani pottery, exquisite lacquerware, and intricate gold leaf artistry, Kanazawa is also a haven for traditional tea houses and well-preserved samurai and geisha districts... adding to it's charm and making for a captivating destination.



**EARTHBOUND  
EXPEDITIONS**

Earthbound Expeditions Inc.  
P.O. Box 11305, Bainbridge Island,  
WA 98110 USA T. 206.842.9775  
[www.EarthboundExpeditions.com](http://www.EarthboundExpeditions.com)





## Okayama (Day 6-8)

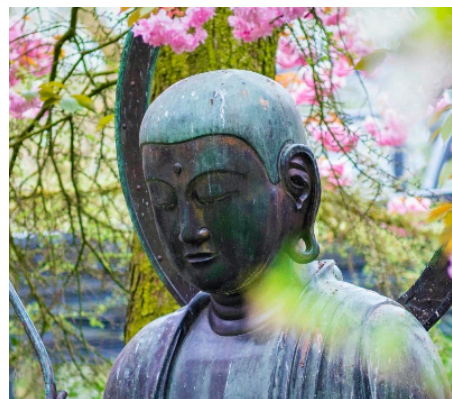
Korakuen in Okayama stands as a true masterpiece of meticulous design and seasonal beauty. Originally built in 1700, the garden first opened to the public in 1884. Though World War II bombings marred the grounds, the gardens have been restored to their original state. Overlooking the garden, Okayama Castle, with its striking black exterior and rich history, provides a glimpse into the region's feudal past.

Our centrally-located hotel in Okayama serves as an ideal hub for exploring other important nearby sites. In Takamatsu, the expansive Ritsurin Garden showcases stunning landscapes. In Matsue, the acclaimed Adachi Museum is known for its perfectly curated gardens and impressive collection of modern Japanese art. Nearby, Naoshima Art Island is an artistic haven featuring contemporary art installations. Additionally, the poignant memorials of Hiroshima provide a powerful and moving tribute to the city's history.



## Kyoto (Days 9-12)

With its rich tapestry spanning 12 centuries, 1,400 temples, and a diverse array of gardens, Kyoto proudly deserves its reputation as one of the world's most culturally rich cities. Renowned for its serene Zen temple, the iconic rock garden of Ryoan-ji, and the dazzling Golden Pavilion (Kinkaku-ji), Kyoto captivates with its blend of history and spirituality. The city's enchanting Arashiyama Bamboo Grove adds to its allure, casting a spell of tranquility and natural beauty.



Kyoto is also home to the historic Gion district, where traditional wooden machiya houses line the streets, and geishas can still be seen practicing their art. The city's culinary scene is a treasure trove of delights, featuring kaiseki dining, where meticulously prepared multi-course meals highlight seasonal ingredients. The Fushimi Inari Shrine, with its thousands of vermilion torii gates, offers a mesmerizing journey through a sacred Shinto site. Or take a stroll along the Philosopher's Path, a picturesque canal-side walkway lined with cherry trees.



**EARTHBOUND  
EXPEDITIONS**

Earthbound Expeditions Inc.  
P.O. Box 11305, Bainbridge Island,  
WA 98110 USA T. 206.842.9775  
[www.EarthboundExpeditions.com](http://www.EarthboundExpeditions.com)





## TRIP AT A GLANCE

- 3 Nights in Tokyo, Japan's capital and historical heart
- 2 Nights in Kanazawa, a gem of tradition and culture
- 3 nights in Okayama, gateway to Adachi and Ritsurin
- 3 nights in Kyoto, Japan's cultural and garden jewel

## IT'S INCLUDED

- Hosted by Mark Weathington, Director of JC Raulston
- Accompanied by Earthbound Expeditions' Stephen Grace
- Eleven nights 4-star hotel accommodations with breakfasts
- Conversations and garden visits with author Stephen Mansfield
- Guided and docent-led tours throughout the program
- Arrival and departure Japan airport transfers on tour dates
- Intercity transfers by high-speed Shinkansen Bullet trains
- All activities as described in the tour itinerary
- Special activities and surprises along the way!

## MEALS

- Daily Buffet Breakfasts
- Tokyo and Kanazawa: All lunches and dinners
- Okayama and Kyoto: All meals except 1 lunch and 1 dinner

## TRIP FACTS

- 12 Days / 11 Nights (not including air travel)
- \$10,995 per person double occupancy
- \$2,500 single supplement (waived if a roommate is found)



**EARTHBOUND  
EXPEDITIONS**

Earthbound Expeditions Inc.  
P.O. Box 11305, Bainbridge Island,  
WA 98110 USA T. 206.842.9775  
[www.EarthboundExpeditions.com](http://www.EarthboundExpeditions.com)



# Know Before You Go

## RESERVATIONS AND DEPOSITS

A \$1000 per person deposit is required to confirm your space on this journey. Deposits can be made via credit card or by calling the Earthbound office at 206-842-9775.

A deposit packet will be emailed confirming the receipt of your deposit. Deposits are refundable, minus a \$500 per person cancellation fee, for 30 days from the processing date or until 90 days prior to departure, whichever comes first. Deposits made 90 days prior to a trip departing are not refundable. Final payment is also non-refundable, which is why we strongly urge guests to purchase travel insurance.

## NOT INCLUDED

Airfare to and from Japan, baggage fees, travel insurance, room or mini-bar service, items of a personal nature and any items not mentioned in this itinerary.

## PHYSICAL REQUIREMENTS

It is the responsibility of each guest to be aware of their physical abilities or limitations and to be in sufficient good health to undertake the trip. Click [here](#) to read "Is an Earthbound trip right for you?" or call the Earthbound office for more details.

## TRAVEL INSURANCE

Earthbound Expeditions strongly encourages the purchase of travel insurance coverage. We include information on trip insurance in your deposit information.

## EVENTS AND HOSTED JOURNEYS

If a planned event is cancelled for any reason, another event will be included in its place. This is not cause for refund. Events are subject to change. Also, if a host or special guest is unable to attend as planned, Earthbound Expeditions will do its utmost to find another host who has similar interests, talents, and expertise. The inability of a host to participate in a tour is not grounds for a full or partial refund.

## TERMS & CONDITIONS

Click [here](#) to read the full Terms and Conditions



**EARTHBOUND  
EXPEDITIONS**

Earthbound Expeditions Inc.  
P.O. Box 11305, Bainbridge Island,  
WA 98110 USA T. 206.842.9775  
[www.EarthboundExpeditions.com](http://www.EarthboundExpeditions.com)

