

OCTOBER 17-27, 2021

Classical Danube with Minnesota Public Radio & The Minnesota Orchestra

A FLOATING MUSIC FESTIVAL JOURNEY BY RIVER SHIP

BEETHOVEN
251
CELEBRATION

**SAVE
UP TO
\$700**

WHEN YOU
BOOK BY
MAY 15

Custom River Journeys by Earthbound Expeditions

A FLOATING MUSIC FESTIVAL JOURNEY BY RIVER SHIP **PRAGUE** **SALZBURG** **VIENNA** **BUDAPEST**

OCTOBER 17-27, 2021

Beethoven
251 Year
Celebration



SAVE ^{UP TO}

\$700

PER PERSON

see pricing page for details

Join friends and fans of **Minnesota Public Radio** and the **Minnesota Orchestra** for a historic cruise down the Blue Danube with host Brian Newhouse. Discover world class museums, grand opera houses and celebrated symphony halls of Budapest, Bratislava, Salzburg, Vienna, and Prague! Your journey begins with three included pre-cruise nights in historic Prague. Walk in the footsteps of Dvorak, Smetana and Mozart while in the Czech capital. In Vienna, we'll celebrate Beethoven's 251st birthday, savor Sachertorte in a local café, spend time in one of the many marvelous museums and dine with the locals in a charming wine cellar frequented by the great composers. Enjoy backstage tours and insider experiences. Visit the homes of Liszt, Mozart and Beethoven. Musicians from the Minnesota Orchestra will join us for intimate recitals aboard our privately chartered ship, the luxurious *Scenic Jewel*.



YOUR HOSTS



Melissa Ousley

Host/Producer, YourClassical MPR

In the fall of 2019, Melissa Ousley became the regular host of Minnesota Public Radio's live broadcasts with the Minnesota

Orchestra. Those Friday nights quickly became a highlight of her week. As she puts it, "The exhilaration that comes from playing a small part in bringing such outstanding concerts to our listeners is hard to describe." Melissa's passion for music began as a kid growing up just outside of New York City. Her parents encouraged her to go to concerts and visit art museums, and that's exactly what she did. While she earned a bachelor's degree from the Eastman School of Music, she's quick to point out that her decades of work in radio is what has taught her the most. When she's away from the airwaves, Melissa loves to run, read, and spend time with friends and family.



Natsuki Kumagai

Violin

Natsuki Kumagai joined the Minnesota Orchestra second violin section in the 2017-18 season and won a position in

the first violin section in 2019. Born and raised in Chicago, she has served in numerous concertmaster positions at orchestras including the New World Symphony, New York String Orchestra Seminar, and the Tanglewood Music Center Orchestra. She is an active chamber musician, winning prizes at the Fischhoff National Chamber Music Competition, Saint Paul Chamber Music Competition and Society of American Musicians Competition. She was a member of the New Fromm Players, the quartet-in-residence for contemporary music at the Tanglewood Institute, performing world and U.S. premieres of works by world-renowned composers Marc Neikrug and Joseph Phibbs.

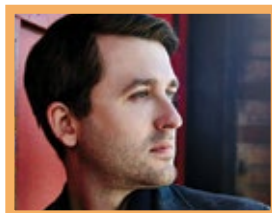


Michael Sutton

Violin

A native of Minneapolis, Michael Sutton joined the Minnesota Orchestra in 1997. He performed Martin's Three

Madrigals with violist Kenneth Freed at a 2007 chamber music concert, and he has appeared on Sommerfest programs playing chamber music with pianist William Wolfram and violinist Pekka Kuusisto. In addition to performing in Minnesota Orchestra programs, he is concertmaster of the Bloomington Symphony Orchestra, a post he accepted in fall 2014. He also is a faculty member at the MacPhail Center for Music and a violin coach for the Greater Twin Cities Youth Symphonies. For four years Sutton was a concertmaster of the New World Symphony in Miami Beach; he was also a leader at the Schleswig-Holstein Music Festival and the Pacific Music Festival in Japan.



Andrew Staupe

Piano

Andrew has appeared as soloist with the Minnesota Orchestra, Baltimore Symphony, San Diego Symphony, Houston Symphony,

Fort Worth Symphony, Indianapolis Symphony, and many others around the world. He has performed recitals in such venues as the Concertgebouw in Amsterdam, Rachmaninov Hall in Moscow, the Schumann Haus in Leipzig, and the Salle Cortot in Paris. An avid chamber musician, Andrew has jammed with legendary vocalist Bobby McFerrin, played Tangos with the Assad Brothers, and has collaborated with numerous other instrumentalists and singers. Most recently, his debut recording of the complete works for piano and violin of Carl Nielsen has been released on the acclaimed Naxos label. Deeply committed to teaching, Andrew is an Assistant Professor of Piano at the University of Houston, and formerly taught at the University of Utah.



Matthew Brumley

Earthbound Expeditions

Matthew Brumley is the founder of Earthbound Expeditions and has been leading and creating public

radio and museum adventures worldwide for 25 plus years. After completing his undergraduate studies at the universities of Copenhagen and Moscow, he went on to attend the graduate program at the London School of Economics. He has lived in Copenhagen, Paris, London, Tel Aviv and San Jose, Costa Rica. Listen to Matthew's travel segment at KNKX – NPR Public Radio, Seattle.



Amy Hyatt

Event and Traveler Manager, American Public Media Group

Amy Hyatt is a dynamic event and travel manager with over 25 years' experience, currently

working at American Public Media and Minnesota Public Radio. Her global success includes managing events, initiatives and group trips in over 40 countries, including as a member of two Olympic committees. Amy believes in the power of public media, travel, hospitality and empathy to transform the world. Her favorite places to sit are the alto section of the choir loft, a Delta Comfort+ window seat, her patio in Roseville, MN and any table full of good friends and homemade carbs.



YOUR CLASSICAL JOURNEY BEGINS

DAY 0–OCT. 16: DEPART USA

Overnight flight to Europe.

DAY 1–OCT. 17: HISTORIC PRAGUE

Considered by many to be the most beautiful European capital, Prague is the city in Europe, Prague is the city of Smetana, Dvořák, Kafka and the town Mozart loved best. The city is also home to three historic opera houses, the Czech Philharmonic, and several chamber orchestras. Enjoy a welcome orientation dinner before settling in for the night at your hotel. Sleep in Prague (D)



DAY 2–OCT. 18: PRAGUE'S OLD TOWN & JEWISH QUARTER



Our historic walking tour of Prague will start at its center, Wenceslas Square.

En-route to the Old Town Square, we'll see the illustrious Estate Opera House where Mozart conducted *Don Giovanni* and *The Marriage of Figaro*. Our journey continues to Prague's stirring medieval Jewish quarter. After enjoying a traditional Czech lunch, the afternoon is yours before meeting your hosts for your first classical music concert. Sleep in Prague (B,L)



Reserve your space today. Call **800-723-8454** or visit www.earthboundexpeditions.com



St Stephen Basilica, Budapest



DAY 3–OCT. 19: CHARLES BRIDGE & PRAGUE CASTLE



After breakfast, we make our way past Charles University to Charles Bridge. We'll cross the very river that lends its name to Smetana's symphonic Czech masterpiece, the *Vltava*. Then we'll ascend the hill to one of Europe's most impressive castles: Prague Castle. A UNESCO World heritage site, it consists of palaces and ecclesiastical buildings of various architectural styles, from Roman-style buildings from the 10th century through Gothic modifications in the 14th century. A second classical concert is included this evening! Sleep in Prague. (B)

DAY 4–OCT. 20: DEPART PRAGUE / BOARD SHIP

Welcome to Hungary! We depart this morning for Budapest and embark the *Scenic Jewel* in the afternoon to begin our custom classic cruise on the Danube. A welcome cocktail party and dinner will be served on board. (B,D)

DAY 5–OCT. 21: CLASSICAL BUDAPEST: THE CITY OF FRANZ LISZT



Enjoy a full day exploring Budapest! See the Great Synagogue, enjoy a private piano recital at the Franz Liszt Memorial Museum and tour the

historic State Opera house. Also included, an excursion to Buda Hill where you'll have time to soak in the stunning views. In the late afternoon you may wish to visit one of the famous bath houses. Enjoy an evening cruise and the city lights as we set sail for Bratislava, Slovakia! (B,L,D)

DAY 6–OCT. 22: BRATISLAVA, SLOVAKIA



At midday the ship reaches the historic capital city of Bratislava. Founded over 2,000 years ago, the city once served as the capital of Hungary. You'll be enchanted by the quaint lanes of old town. Sip a hearty Slovak schnapps and learn about the history and customs of this small mountainous country. Enjoy an after dinner shipboard classical concert. (B,L,D)

DAY 7–OCT. 23: VIENNA: IN THE FOOTSTEPS OF THE GREAT COMPOSERS



This morning we walk in the footsteps of Beethoven, Schubert, Mahler, Brahms, Strauss, Mozart and the Habsburgs! Accompanied by local experts, learn why Vienna in the 18th century was the musical capital of Europe. Visit Mozart's house where he composed *The Marriage of Figaro* and enjoy a **private concert** in the very chamber where Mozart himself first performed in Vienna as a young man. Enjoy an evening in Vienna. (B,L,D)

DAY 8–OCT. 24: CLASSICAL VIENNA

In celebration of Beethoven's 251st birthday, we'll devote a morning to the great composer. Though born in Bonn, Beethoven called Vienna home. We'll visit some of his favorite haunts and inspiring sights. Also enjoy a private tour of the Vienna Fine Arts Museum and Wiener Musikverein (home to the Vienna Philharmonic). (B,L,D)

MINNESOTA  ORCHESTRA

SPECIAL MUSICAL GUESTS

Natsuki Kumagai – Violin

Michael Sutton – Violin

Reserve your space today. Call **800-723-8454** or visit www.earthboundexpeditions.com



Astronomical clock, Prague



Bratislava Castle

DAY 9–OCT. 25: THE MONASTERY OF MELK



Beethoven loved nature, and was inspired to write the Pastoral Symphony (the 6th symphony) by his regular walks in the countryside around Vienna. Today we'll explore Austria's stunning countryside and take a tour of the Benedictine Abbey of Melk, which is a UNESCO world heritage site. Enjoy an after-dinner shipboard classical concert. (B,L,D)

DAY 10–OCT. 26: SALZBURG: A DAY WITH MOZART



Journey past the town of Linz through the Wachau Valley enroute to Salzburg. Enjoy an included walking tour in Salzburg with local historians and relive the life of Mozart. See the very house where Mozart was born on January 27, 1756 and stroll through the charming alleyways of this Baroque jewel. Enjoy a **classical concert** in a monastery. Our gala farewell dinner is this evening. (B,L,D)

DAY 11–OCT. 27: PASSAU/JOURNEY CONCLUDES

We arrive this morning in Passau, Germany for disembarkation. Complimentary transport will be offered to the Munich airport for all travelers. Return home with a lifetime of joyful memories. Bon Voyage! (B)

TRIP FACTS

- Departs USA:
October 16, 2021
- Starts in Prague:
October 17
- Ends in Passau:
October 27
- Special group air rate \$1,495 from Minneapolis. Includes all taxes, fees and transfers while in Europe.

INCLUDED IN YOUR JOURNEY

- Hosted by Melissa Ousley, YourClassical MPR
- Special highlights including lectures, theme dinners, and on-board musical performances by Minnesota Orchestra musicians: Natsuki Kumagai and Michael Sutton with acclaimed pianist Andrew Staupé
- Three pre-cruise nights in glorious Prague
- A top opera/classical performance in Prague
- Concerts in Prague, Budapest and Vienna
- Exclusive tours of celebrated opera houses
- Special visits to the homes of the great composers
- Seven nights first-class cruising on the Danube
- Unique dining experiences featuring regional dishes
- Complimentary wine served at dinner while on board the ship
- Airport transfers for those arriving/departing with the group
- Travel with like-minded classical music lovers
- Minnesota Orchestra Beethoven symphonies five disc box set



YOUR EXCLUSIVE RIVER SHIP: **SCENIC JEWEL**

Privately chartered just for you! The Scenic Jewel is the eighth ship to join the fleet of luxury five star river ships featuring the signature Scenic Sun Lounge, as well as newly designed cabins and suites. Designed with peerless attention to detail, the newest member of the fleet has set a new precedent in luxury river cruising. The Scenic Jewel has been meticulously designed and crafted to afford the most luxurious and unforgettable journey for a trip of a lifetime.

Measuring 443 feet in length and carrying just 163 passengers, this luxury vessel marries space and intimacy with a sense of exclusivity not regularly found on Europe's waters. Couple this with a 1:3 crew to passenger ratio, and guests can expect an attentive service from the minute they step aboard these illustrious river cruise liners.

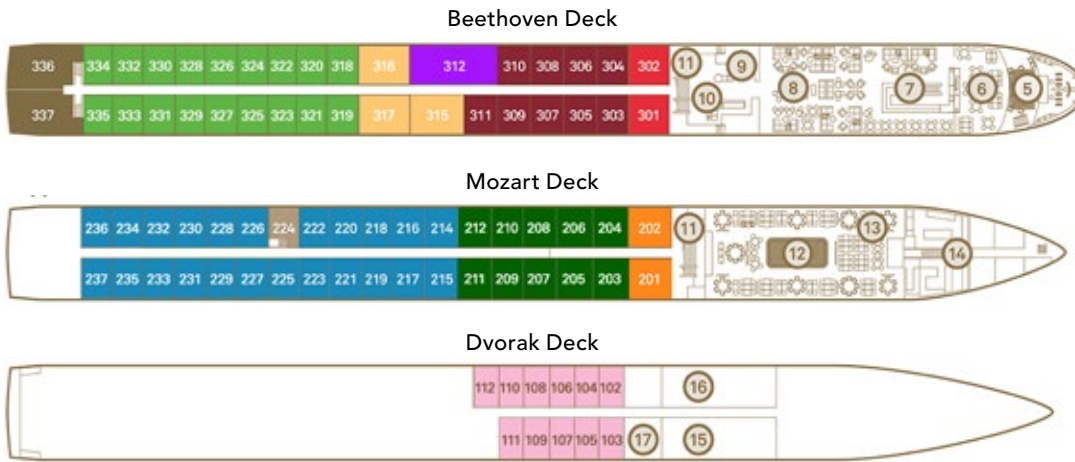
"The Scenic Jewel is a beautiful ship – very clean with a great captain and crew. The food was excellent. We had plenty of room in our cabin and never felt cramped. Everyone seemed to have a wonderful time. We would definitely sail on this ship again!"

—Bonnie and Tom, USA



Reserve your space today. Call **800-723-8454** or visit www.earthboundexpeditions.com

SCENIC JEWEL DECK PLAN & PRICING



**SPECIAL
AIR RATE**

\$1,495

FROM MINNEAPOLIS

**UP TO
\$700**

IN SAVINGS

FOR TRAVEL ALUMNI

IT'S INCLUDED: 11 DAYS – 24 MEALS – 3 NIGHTS PRAGUE – ALL SHORE
EXCURSIONS – **PLUS** CLASSICAL MUSIC CONCERTS

Double Cabin Category	Per Person Before Discount	Deposit by 5-15-2021 & Each Save	Pay Final Balance by Check & Save	Per Person After Discounts	Single Supplement
Dvorak Standard Suite – 160 sq ft	\$4,999	-\$300	-\$100	\$4,599	+\$995
Mozart Balcony Suite – 205 sq ft	\$5,399	-\$400	-\$100	\$4,899	+\$1,350
Mozart Deluxe Suite – 225 sq ft	\$5,599	-\$400	-\$100	\$5,099	+\$1,350
Mozart Junior Balcony Suite – 250 sq ft	\$5,799	-\$400	-\$100	\$5,299	+\$1,895
Beethoven Balcony Suite – 205 sq ft	\$5,999	-\$500	-\$100	\$5,399	+\$1,895
Beethoven Deluxe Balcony Suite – 225 sq ft	\$6,199	-\$500	-\$100	\$5,599	+\$1,895
Beethoven Junior Balcony Suite – 250 sq ft	\$6,399	-\$500	-\$100	\$5,799	+\$1,895
Beethoven Royal Balcony Suite – 315 sq ft	\$6,599	-\$500	-\$100	\$5,999	+\$1,995
Beethoven Royal Panorama Suite – 325 sq ft	\$6,999	-\$500	-\$100	\$6,399	+\$1,995
Beethoven Royal Owner's Suite – 520 sq ft	\$8,999	-\$500	-\$100	\$8,399	+\$1,995

*Contact Earthbound Expeditions for pricing

Note: Valid US passport required. Port taxes, charges & fees currently \$199 and are additional. Schedule subject to change.

Not included: Gratuities for ship staff, travel insurance and any items not mentioned in your itinerary.

Savings: Discounts apply for all travel alumni and Earthbound travel alumni. If your deposit is made by May 15, 2021 and/or you make your final payment by check, you will receive the additional discounts.

Advanced, cancelled or delayed sailing for cruises: Please note that cruise schedules and tour activities can be subject to change due to changes in water levels, port accessibility, weather, labor disputes or for any other reason whatsoever. The Owner or Operator of the cruise vessel may, at any time, cancel, advance or postpone any scheduled tour and may, but is not obliged to, substitute another vessel or itinerary, and it shall not be liable for any loss whatsoever to passengers by reason of any such cancellation, advancement or postponement.

Exclusive air rate is in economy class and allows for no deviations or upgrades. Seat assignments are subject to the discretion of the airline. Specific requests cannot be guaranteed.



Reserve your space today. Call **800-723-8454** or visit www.earthboundexpeditions.com

Registration Form



Classical Danube with Minnesota Public Radio
and members of the Minnesota Orchestra

Today's Date

October 17-27, 2021

Destination / Tour Name

Dates of Tour

If applicable:

Group Air: ☐ Yes ☐ No Earthbound Alumni / other discount: ☐ Yes ☐ No

Select one:

☐ I have selected a roommate whose name is: _____

☐ I would like a roommate (Single supplement fee waived if a willing roommate is confirmed)

☐ I wish to have a single cabin throughout the tour/cruise

Preferred Room Type: ☐ 1 Queen Bed ☐ 2 Twin Beds

Personal information

Name (as appears on passport)	Preferred Name	D.O.B. / /
Name (as appears on passport)	Preferred Name	D.O.B. / /

Address

City State Zip

Home phone Cell

Email #1 Email #2

Emergency contact Phone

Dietary requirements: ☐ Yes ☐ No Explanation: _____

Medical requirements: ☐ Yes ☐ No Explanation: _____

How did you hear about Earthbound Expeditions?

Minnesota Public Radio / Maine Public Radio: ☐ Radio ☐ Email ☐ Printed materials ☐ Social Media

☐ Other _____ ☐ Friend/Family (Their name) _____

For questions, call:

800-723-8454



**EARTHBOUND
EXPEDITIONS**

Earthbound Expeditions
PO Box 11305
Bainbridge Island, WA
98110

Tel: 206-842-9775
Fax: 206-238-8480
info@earthboundexpeditions.com
www.earthboundexpeditions.com



Bratislava castle at sunset

To reserve your space call 800-723-8454
or visit www.earthboundexpeditions.com



**MINNESOTA
PUBLIC RADIO®**



MINNESOTA
ORCHESTRA



**EARTHBOUND
EXPEDITIONS**