



The Lucerne Music Festival!

with host Fred Child of Performance Today!

September 4 - 14, 2025



The incomparable Fred Child has hosted America's most popular classical music program Performance Today for 25 years. Fred has announced that he will depart from the show next year. Join Fred as he hosts his last international trip as PT Host at the world's premier classical music festival - The Lucerne Music Festival in Switzerland, September 4-14, 2025! Held in the prestigious, acoustically exquisite KKL venue on the shores of Lake Lucerne, this world-renowned festival features top-tier orchestras, conductors and soloists. Attend four nights of concerts in the heart of Switzerland. Then

three days in the towering alps enjoying picturesque villages and breathtaking vistas from our 4-star mountain home. Dine on fondue while soaking up the stunning views of Europe's most famous glacier covered mountains: the Monk, Eiger and Jungfrau! Cogwheel trains, gondolas and mountain walks through pretty villages await. We'll end on glorious Lake Geneva and celebrate Fred at a special farewell dinner. Space on this exclusive small land trip is limited and with Fred's recent announcement, the space will go quickly. Don't delay - make your reservations TODAY.

TRIP AT A GLANCE

1 Night	Zurich, Switzerland
4 Nights	Lucerne (festival)
3 Nights	Wengen, alpine village
2 Nights	Geneva



**EARTHBOUND
EXPEDITIONS**

Earthbound Expeditions Inc.
POB 11305, Bainbridge Island, WA 98110 USA
Tel: 206.842.9775
www.EarthboundExpeditions.com

JOURNEY HIGHLIGHTS

Tickets to the Lucerne Summer Classical Festival ❖ Four glorious nights in Lucerne ❖ Three stunning days in the high Alps ❖ A cruise on Lake Lucerne ❖ A cogwheel ride in the Alps ❖ Wine and cheese tastings ❖ A special fondue evening ❖ A tour of the Rosengart Museum, featuring works by Picasso, Cézanne and Matisse ❖ City walking tours ❖ Dining with the locals ❖ A tour of Geneva ❖ Travel with like-minded friends who share your passion for classical music, food and art

IT'S INCLUDED

- ✓ Hosted by Fred Child of Performance Today
- ✓ Guided by Holger Zimmer of Earthbound Expeditions
- ✓ Tickets to the renowned Lucerne Summer Classical Festival (*a total of 4 events*)
- ✓ Four-star hotel accommodation throughout the journey
- ✓ Breakfast daily plus lunch or dinner daily
- ✓ Private transport by air-conditioned motor coach
- ✓ Fascinating city tours with local guides
- ✓ Fun and entertaining authentic yodeling lessons
- ✓ Private museum tours
- ✓ A small group of travelers who share your passion for food, wine, and classical music!

TRIP FACTS

11 Days/10 Nights (excluding air travel dates)

\$7,850 per person, double occupancy

\$2,450 single supplement (*waived if you are willing to share & a roommate is found*)

Trip begins in Zurich on September 4, 2025

Trip ends: in Geneva on September 14, 2025

WAYS TO SAVE \$300

Travel alumni save \$100 ♦ Pay your final balance by check and save \$200



NOT INCLUDED: International Airfare ❖ Travel insurance ❖ Any items not mentioned in your custom classical Swiss adventure



**EARTHBOUND
EXPEDITIONS**

Earthbound Expeditions Inc.
POB 11305, Bainbridge Island, WA 98110 USA
Tel: 206.842.9775
www.EarthboundExpeditions.com



Your Classical Journey Begins!

DAY 0: Depart North America for Switzerland

Remember, you'll need to depart the US one day early.

DAY 1: Welcome to Zurich, Switzerland

Join your host Fred Child evening orientation and special Welcome-to-Switzerland feast. Sleep in Zurich (D)

DAY 2: Discover Lucerne!

Lucerne is one of the prettiest towns in Switzerland. This lakeside town is known for its preserved medieval architecture and bridges across the Reuss River; the most celebrated is the Chapel Bridge (*Kapellbrücke*), a 670-foot wooden bridge built in 1333. Join your host Fred Child evening for a special Welcome-to-Lucerne lunch in the old town. This evening you'll attend your first magical concert. *Sleep in Lucerne (D)*

DAY 3: A Day in Lucerne

We'll spend the morning exploring Lucerne's frescoed squares, medieval churches, and lakeside views with mountains. A highlight is the Lion of Lucerne, a giant sandstone carving memorializing Swiss guards killed in 1792.

Wagner fans won't miss the Richard Wagner House Museum, where the composer lived for six years. Surrounded by a park on the lake, Wagner completed **Meistersinger** and **Siegfried** here and premiered **Siegfried Idyll** for his wife in 1870.

After a Swiss lunch, enjoy an evening concert at the Lucerne Festival!
Sleep in Lucerne (B, L)



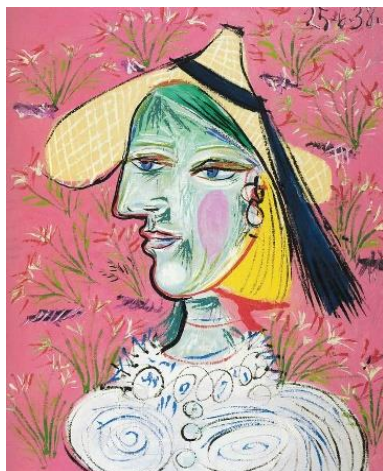
**EARTHBOUND
EXPEDITIONS**

Earthbound Expeditions Inc.
POB 11305, Bainbridge Island, WA 98110 USA
Tel: 206.842.9775
www.EarthboundExpeditions.com



ABOUT THE LUCERNE FESTIVAL

Lucerne Festival is one of the leading international festivals in the field of classical music. The festival was founded in 1938 and Michael Haefliger has been director since 1999. The summer festival offers a diverse range of around 100 concerts and further events. A diverse range of concert formats is offered - symphony concerts, chamber music, recitals, debuts, late nights and much more.



DAY 4: An Art Filled Day in Lucerne

Guten Morgen! After a hearty Swiss breakfast, enjoy a private tour of the renowned Sammlung Rosengart Museum. Situated just two minutes' walk from your hotel, the museum houses masterpieces by Picasso, Matisse, Monet, and Cézanne. After our tour, the day is yours to explore Lucerne's gorgeous waterfront.

This evening we'll enjoy another magnificent concert at the renowned Lucerne Festival. *Sleep in Lucerne (B)*



**EARTHBOUND
EXPEDITIONS**

Earthbound Expeditions Inc.
POB 11305, Bainbridge Island, WA 98110 USA
Tel: 206.842.9775
www.EarthboundExpeditions.com



DAY 5: Cruise Lake Lucerne

This is your morning to sleep in, relax and explore Lucerne on your own. With so many lovely streets, cafés and shops, your hardest decision will be where to go first! We'll meet midday for an included lunch and then we'll board an historic Swiss boat for a delightful afternoon cruise on Lake Lucerne. It's a cruise not to be missed!

Then, in the afternoon we meet for our fourth and final classical concert.

Sleep in Lucerne (B, L)

DAY 6: Lucerne to the heart of the Alps, Interlaken!

It's not hard to find an amazing vista overlooking the beautiful city of Interlaken. Towering over the ancient town is the mighty Harder Mountain, and on its peak sits the castle-like Harder Kulm with an observation deck providing a breathtaking view of the entire area between Lake Thun and Lake Brienz to the Eiger, Mönch and Jungfrau. If you look closely, you can discern the facial features of a man: dark eyes, a distinctive nose and a mustache. How this face appeared on the mountain is an old legend.

After an independent lunch in Interlaken, enjoy a scenic drive up the Lauterbrunnen valley. Our home for the next three nights is a lovely, historic, 4-star hotel situated in the town of Wengen. In order to get there, we'll need to hop a scenic cog-wheel train. Upon arrival, enjoy a welcome dinner. *Sleep in Wengen (B, D)*



**EARTHBOUND
EXPEDITIONS**

Earthbound Expeditions Inc.
POB 11305, Bainbridge Island, WA 98110 USA
Tel: 206.842.9775
www.EarthboundExpeditions.com



DAYS 7 & 8: Two stunning days in the high Alps

With its nostalgic timber houses, the many dispersed holiday chalets and hotels dating from the Belle Epoque period, this Bernese Oberland holiday resort has retained all the character of a picture-postcard mountain village. Since 1893, Wengen has been car-free and it is accessible only from Lauterbrunnen via the Wengernalp railway. Our hotel is perfectly situated in this extraordinarily beautiful landscape.

Your guide will be on hand to offer advice on how best to explore this region for the next two days. Many highlights within the Jungfrau region can all be reached easily from Wengen including the Jungfraujoch and Schilthorn.

Plan to meet each evening over dinner to share stories from your day! We'll have traditional fondue one evening too. *Sleep in Wengen (B, D daily)*

DAY 9: From the Alps to the shores of Lake Geneva via Gruyères

Rising north of Lausanne, the World Heritage-listed Lavaux vineyards are ridiculously lovely. Driving down to Lake Geneva, the gravity-defying slopes are intricately scaled with terrace after terrace, vine after vine, dry-stone wall after dry-stone wall. If this is the first you've heard of them, it's because the wines here are so select and small-scale that many of them never leave Switzerland (lucky Swiss).



Our journey to Geneva today includes a wine and cheese tasting lunch and a stop in the town of Gruyères, in Switzerland's Saane Valley. This medieval town is home to just under 2,000 people. The namesake cheese, Gruyère, is sweet but salty, with a nutty, earthy flavor and crumbly texture. This is a must-visit destination for cheese fanatics. Enjoy lunch in the countryside and scenic drive along the shores of Lake Geneva.

Sleep in Geneva (B, L)

DAY 10: A Day in Gorgeous Geneva

Geneva was the home of Protestant leader John Calvin and, the original home of the The League of Nations (1920 - 1946). This was the first intergovernmental organization established “to promote international cooperation and to achieve international peace and security”. It is often referred to as the “predecessor” of the United Nations. Today, Geneva is a thriving, stunning lakeside town which attracts people from all corners of the planet. World-class museums and amazing dining experiences make Geneva the perfect place to end our journey.

Looking for something unique? Visit Geneva’s newest attraction - the Patek Philippe Museum! This is one of the world’s most important and prestigious horological collections with some 2,500 watches, automata, and precious objects highlighting five centuries of Genevan, Swiss and European horological art, as well as a glimpse into Patek Philippe’s production since 1839.

This afternoon, enjoy a farewell lunch followed by a scenic cruise on Lake Geneva.

Sleep in Geneva (B, L)

Day 11: Tour over after breakfast

Return home with memories that will last a lifetime. (B)

Meet Your Hosts

Meet Fred!



Since 2000, **Fred Child** has been the host of APM's Performance Today, the most-listened-to classical music radio show in America. Fred is also the commentator and announcer for Live from Lincoln Center, the only live performing arts series on television. Fred also hosts musical events on stages around the country, working with major orchestras and festivals, and connecting with audience's coast to coast.

Fred has hosted live national concert broadcasts, including the Los Angeles Philharmonic from Walt Disney Hall, the Last Night of the Proms from London, New Year's concerts by the New York Philharmonic, the Boston Symphony, dozens of A-list artists from Carnegie Hall, and BBC specials for American audiences. Fred's music reviews have appeared on NPR's All Things Considered, and his music reports have appeared on NPR's Morning Edition. He's been a contributor to Billboard magazine, and a concert host and commentator for BBC Radio 3.

While growing up in Portland, Oregon, Fred studied classical piano. He also dabbles in guitar, percussion and bagpipes. His percussion band opened for the Grateful Dead at the Oakland Coliseum. He has narrated works at the Aspen Festival, with the Virginia Symphony, with the U.S. Marine Band and at the Round Top Festival-Institute. This will be Fred's tenth hosted adventure with Performance Today listeners.

Meet Amy!



Amy Hyatt is a dynamic event and travel manager with over 25 years' experience, currently working at American Public Media and Minnesota Public Radio. Her global success includes managing events, initiatives and group trips in over 40 countries, including as a member of two Olympic committees. Amy believes in the power of public media, travel, hospitality and empathy to transform the world. Her values and home are deeply rooted in Minnesota.



**EARTHBOUND
EXPEDITIONS**

Earthbound Expeditions Inc.
POB 11305, Bainbridge Island, WA 98110 USA
Tel: 206.842.9775
www.EarthboundExpeditions.com



Know Before You Go!

Reservations and Deposits: A \$1,000 per person deposit is needed to confirm your space on this journey. You can make a credit card deposit online or by phone. Deposits are refundable, minus a \$150 per person cancellation fee, for 60 days from the processing date or 90 days prior to departure, whichever comes first. Deposits made 90 days prior to a trip departing are not refundable. Final payment is also non-refundable, which is why we strongly urge guests to purchase travel insurance.

Not Included: International airline tickets, alcoholic beverages, room service and gratuities for hotel staff, travel insurance, meals not listed in brochure, and any activities or items not listed in your itinerary.

Physical Requirements: It is the responsibility of each guest to be aware of their physical abilities or limitations and to be in sufficient good health to undertake the trip. [Click here](#) to read “Is an Earthbound trip right for you?” or call the Earthbound office for more details.



**EARTHBOUND
EXPEDITIONS**

Earthbound Expeditions Inc.
POB 11305, Bainbridge Island, WA 98110 USA
Tel: 206.842.9775
www.EarthboundExpeditions.com

Travel Insurance: Earthbound Expeditions strongly encourages the purchase of travel insurance coverage. We include information on trip insurance in your deposit information.

Events and Hosted Journeys: If a planned event is cancelled for any reason, another event will be included in its place. This is not cause for refund. Events are subject to change. Also, if a host or special guest is unable to attend as planned, Earthbound Expeditions will do its utmost to find another host who has similar interests, talents, and expertise. The inability of a host to participate in a tour is not grounds for a full or partial refund.

Terms & Conditions: Click [here](#) to read the full terms and conditions.



Reservations & Questions!

206.842.9775

info@earthboundexpeditions.com

www.EarthboundExpeditions.com

Reserve online using your Guest Portal!



**EARTHBOUND
EXPEDITIONS**

Earthbound Expeditions Inc.
POB 11305, Bainbridge Island, WA 98110 USA
Tel: 206.842.9775
www.EarthboundExpeditions.com