

# Croatia DELUXE Cruise



## Island Hopping by Privately Chartered 1<sup>st</sup> Class Yacht September 20 - 29, 2025

Embark on an unforgettable journey to sun-kissed Croatia with fellow adventurers! Your voyage begins in the enchanting town of Dubrovnik, renowned as the pearl of the Adriatic. Step aboard the luxurious MV Avangard, exclusively chartered for Earthbound Expeditions guests, where days are adorned with laughter, fine wine, rich history, and picturesque islands.

Following eight blissful days exploring the Dalmatian islands, our journey ventures onwards to the renowned Plitvice waterfall park. Finally, our path leads us to Zagreb, Croatia's vibrant and dynamic capital. Space is limited aboard this tailor-made, privately chartered Croatian expedition, so secure your cabin soon!

### TRIP AT A GLANCE

7 Nights aboard the privately-chartered, deluxe MV Avangard yacht  
2 Nights Zagreb, Croatia (via Plitvice National Park)



**EARTHBOUND  
EXPEDITIONS**

Earthbound Expeditions Inc.

P.O. Box 11305, Bainbridge Island, WA 98110 USA

Tel: 206.842.9775

[www.EarthboundExpeditions.com](http://www.EarthboundExpeditions.com)



## JOURNEY HIGHLIGHTS

The UNESCO World Heritage site of medieval Dubrovnik ✨ The ancient Roman palace of Split ✨ Cruising the islands of Croatia on board the luxurious MV Avangard ✨ Excursions to wineries and farms ✨ Seaside dining ✨ Wine and olive tastings ✨ Plitvice Lakes National Park ✨ Delightful meals and excursions in charming Zagreb, Croatia's capital city!

## IT'S INCLUDED

- ✨ Guided by our very own Earthbound guide, Ervin Crnovic
- ✨ Two post-cruise nights in charming Zagreb
- ✨ Seven nights cruising on board the 1<sup>st</sup> class MV Avangard yacht
- ✨ Transport by private coach
- ✨ All breakfasts plus 10 multi-course traditional multi-course meals
- ✨ All shore excursions with knowledgeable local guides
- ✨ All gratuities for your Earthbound Expeditions guide and drivers
- ✨ Alumni discounts applied towards future adventures

## TRIP FACTS

10 Days / 9 Nights

Trip begins: September 20, 2025 in Dubrovnik, Croatia

Trip ends: September 29, 2025 in Zagreb, Croatia

Pricing: See last page for ship layout and pricing details

**NOT INCLUDED** International flights, airline luggage fees, any meals not mentioned, room/mini-bar service, gratuities for hotel staff or ship crew, port fees of \$65, travel protection/insurance coverage, items of a personal nature and anything not listed in the "It's Included" section above.

**WAYS TO SAVE:** Earthbound travel alumni save \$100 ✧ Reserve before January 15, 2025, and save \$300 ✧ Pay final balance by check and save \$100



**GETTING THERE:** We recommend flying into Dubrovnik and out of Zagreb.



**EARTHBOUND  
EXPEDITIONS**

Earthbound Expeditions Inc.

P.O. Box 11305, Bainbridge Island, WA 98110 USA

Tel: 206.842.9775

[www.EarthboundExpeditions.com](http://www.EarthboundExpeditions.com)





## Your adventure begins!

### Day 0: Depart for sunny Croatia

Depart the USA for Croatia no later than today. Note: We highly recommend flying over a day or two early in order to enjoy this region. Consider staying in the delightful, quiet seaside town of Lapad, located just 5 minutes from historic Dubrovnik. Four-star, seaside hotels that you might wish to consider: [Royal Neptun](#), [Royal Blue](#) and the [Hotel Ariston](#).

### Day 1, Sept 20: Dubrovnik, Croatia! Embark your yacht

Arrive in Dubrovnik and board your 1<sup>st</sup> class MV Avangard yacht. Embarkation begins at 3pm. Enjoy an orientation and welcome feast. Revel in a beautiful evening cruise alongside the old city walls before docking near Dubrovnik. *Sleep on board near Dubrovnik (D)*

### Day 2, Sept 21: The Walled City of Dubrovnik

This morning we'll enjoy a guided walk of the old town of Dubrovnik including a cable car ride to Srđ Mountain for scenic views of the old city walls and the Elaphiti Islands. Don't forget to bring your camera! The afternoon is at your leisure. Your local guide can recommend idyllic spots for lunch and dinner. For those with lots of energy, we highly recommend walking the famous walls. This 1.2-mile long walk is actually on top of the surrounding city walls and provides a unique perspective to the city. *Sleep on board near Dubrovnik (B)*



**EARTHBOUND  
EXPEDITIONS**

Earthbound Expeditions Inc.

P.O. Box 11305, Bainbridge Island, WA 98110 USA

Tel: 206.842.9775

[www.EarthboundExpeditions.com](http://www.EarthboundExpeditions.com)



### Day 3, Sept 22: Mljet National Park!

Our destination today is the island of Mljet. We'll hike to visit the salt lakes in Mljet National Park, take a boat ride to St Mary Isle, and visit an ancient Benedictine monastery and a 12<sup>th</sup> century church. *Sleep on board near Dubrovnik (B, L, D)*

### Day 4, Sept 23: Dubrovnik to Pelješac Peninsula: Croatia's premier wine island

Our destination today is the Pelješac Peninsula, best known for its excellent wine. We'll venture inland to explore the rural areas, visit a local farm, and enjoy an all-inclusive dinner with traditional Croatian dishes made from local produce.

*Sleep on board near the Pelješac peninsula (B, L, D)*

### Day 5, Sept 24: Korčula: Birthplace of Marco Polo

This morning we cruise to the Island of Korčula, best known as the birthplace of Marco Polo. We'll stop for lunch in one of the secluded bays en route to Korčula. Upon arrival on the island, we'll have a guided walking tour of this enchanting town with fortified walls and unique herringbone-patterned streets. Korčula also has an abundance of restaurants where you can opt for a gourmet or casual dinner experience. There are many bars and clubs for those looking for evening entertainment. *Sleep on board near Korčula (B, L)*

### Day 6, Sept 25: Glamorous Hvar

Today, we'll enjoy a swim in the Pakleni Islands as we sail up to Hvar. The longest island in the Adriatic, Hvar is renowned for its sunny weather, lavish lavender fields and breathtaking beauty. The island is also home to many historical landmarks, including a Renaissance cathedral with its original tower and the oldest community theatre in Europe, founded in 1612. Hike up to the town fort overlooking the harbor for lovely scenic views of the ship and the Pakleni Islands. In the evening, Hvar offers an abundance of entertainment - many restaurants, bars and cafés are open long into the night. *Sleep on board near Hvar (B, L)*







**Day 7, Sept 26: Hvar to Split via the charming village of Grad (or the village of Milna)**

Today presents us with two delightful options. Your captain will decide which town and harbor will be the perfect port for today's excursion. Both Milna and the village of Grad on the island of Hvar offer their own unique charm and beauty. *Sleep on board near Hvar (B, L, D)*

**Day 8, Sept 27: North to Zagreb via Plitvice National Park a World Heritage Site**

We disembark the MV Avangard after breakfast today. Our drive across Croatia will take us to the world-renowned waterfall park of Plitvice. Nestled within Croatia's expansive Dinaric Alps, Plitvice Lakes National Park spans nearly 70,000 acres, making it the country's largest national park. This picturesque sanctuary resides in the heart of Croatia, showcasing a stunning limestone terrain adorned with lush forests and sprawling meadows. However, its most captivating feature is the awe-inspiring Plitvice Lake system. This natural marvel has captivated the minds of scientists and visitors alike with its interconnected series of lakes, cascading waterfalls, and subterranean watercourses. Divided into the upper and lower lakes, this enchanting landscape promises an unforgettable experience for all who wander through its pristine beauty.

Explore the park by foot before continuing on to Zagreb. *Sleep in Zagreb (B, D)*



**EARTHBOUND  
EXPEDITIONS**

Earthbound Expeditions Inc.

P.O. Box 11305, Bainbridge Island, WA 98110 USA

Tel: 206.842.9775

[www.EarthboundExpeditions.com](http://www.EarthboundExpeditions.com)





Plitvice National Park: A World Heritage Site

*"If I had to rate this trip from 1 to 10, ten being the best, I would rate it a 15!!!!"*

Sirpa H. – Earthbound Expeditions Croatia alumni traveler

#### Day 9, Sept 28: Explore Lively Zagreb

Embark this morning on a captivating walking tour of Zagreb, Croatia's vibrant capital and largest city. Discover its rich history, from the medieval Upper Town to the bustling Lower Town filled with elegant Austro-Hungarian architecture. Afterward, join your fellow travelers, host, and knowledgeable guide for a celebratory farewell lunch, toasting to unforgettable memories made along your journey. Tonight, indulge in the charm of Zagreb's eclectic architecture, wander its enchanting cobblestone alleyways, and experience the renowned café culture that permeates this captivating city. *Sleep in Zagreb (B, L)*

#### Day 10, Sept 29: Your Journey Concludes

Your adventure concludes after breakfast today. Return home with a lifetime of memories!



**EARTHBOUND  
EXPEDITIONS**

Earthbound Expeditions Inc.

P.O. Box 11305, Bainbridge Island, WA 98110 USA

Tel: 206.842.9775

[www.EarthboundExpeditions.com](http://www.EarthboundExpeditions.com)



## THE DELUXE SUPERIOR MV AVANGARD

### About MV Avangard

Launched in 2017, the MV Avangard is a deluxe vessel with the latest trends in small-ship construction. She is 161-feet-long and 28-feet wide with a cruising speed of nine nautical miles per hour which makes her ideal for berthing at smaller ports of call. The comfort of guests is ensured with everything from the impeccable personnel of the crew to the long list of modern amenities.

### Cabins

The vessel includes 18 air-conditioned, en-suite cabins, 8 on the lower deck and 10 on the main deck. Each cabin offers important features like a PA system for announcements made by the captain and cruise director, a fire alarm, lifejackets and emergency lights. Passengers will also find a small sofa, writing desk and chair, nightstand, and either a port hole (lower deck cabins) or window (main deck cabins) for watching the world go by. All bathrooms include a shower, sink, toilet and hairdryer.



**EARTHBOUND  
EXPEDITIONS**

Earthbound Expeditions Inc.

P.O. Box 11305, Bainbridge Island, WA 98110 USA

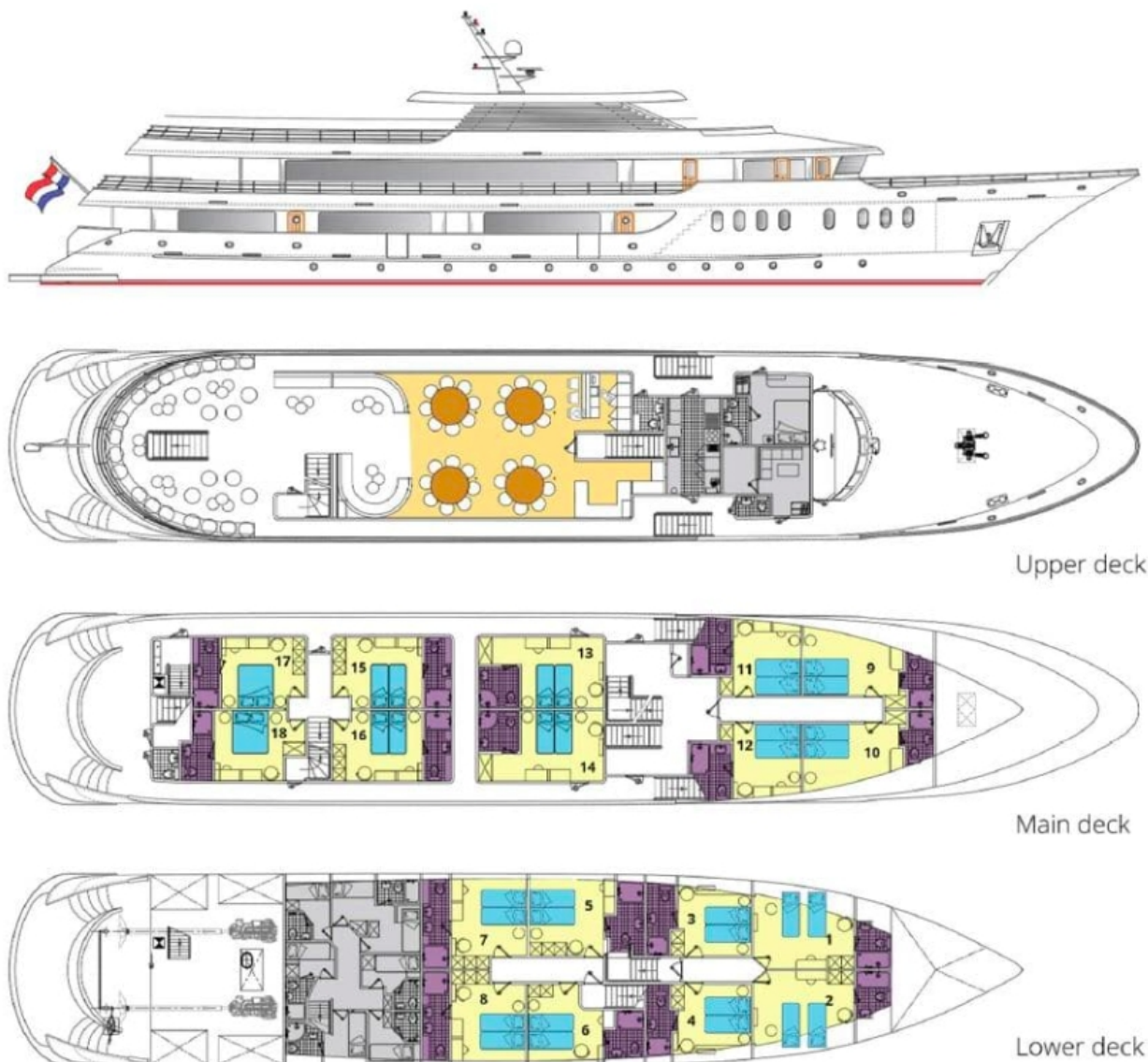
Tel: 206.842.9775

[www.EarthboundExpeditions.com](http://www.EarthboundExpeditions.com)



# DELUXE SUPERIOR CLASS: MV AVANGARD

## Ship Schematic



### PRICE PER PERSON IN A SHARED TWIN OR DOUBLE CABIN

| DOUBLE CABIN<br>CATEGORY | PRICE BEFORE<br>DISCOUNT | EARLY BIRD<br>DISCOUNT | PRICE AFTER<br>DISCOUNT |
|--------------------------|--------------------------|------------------------|-------------------------|
| Lower Deck               | \$4,999                  | \$300                  | \$4,699                 |
| Main Deck                | \$5,499                  | \$300                  | \$5,199                 |

*Single Supplement is \$1,995 (limited space available for single cabins)*



**EARTHBOUND  
EXPEDITIONS**

Earthbound Expeditions Inc.  
P.O. Box 11305, Bainbridge Island, WA 98110  
Tel: 206.842.9775  
[www.EarthboundExpeditions.com](http://www.EarthboundExpeditions.com)





## About Earthbound Expeditions

Since 1997, we are honored to have provided hundreds of customized, culturally-rich adventures to museums, NPR Public Radio affiliates, cooking schools, wineries and botanical gardens. Destinations include Europe, Africa, Asia, New Zealand, Australia, Turkey, Cuba, and North, Central, and South America. Earthbound Expeditions is the leading travel provider for globetrotting public radio listeners and has 25 years of in-depth field experience.

## Reservations and Questions!

[info@earthboundexpeditions.com](mailto:info@earthboundexpeditions.com)

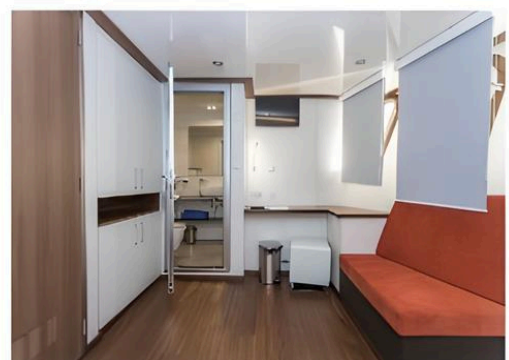
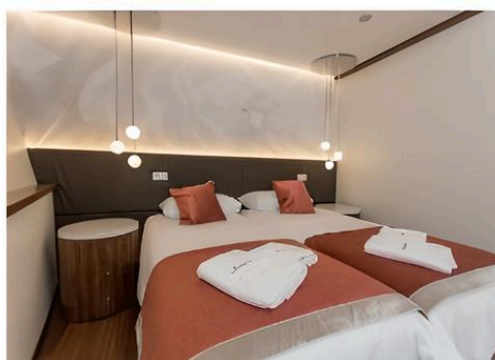
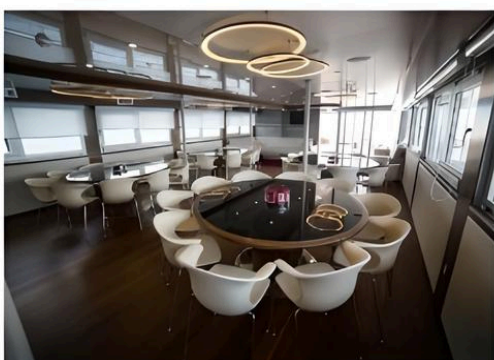
206.842.9775





# DELUXE SUPERIOR CLASS: MV AVANGARD

## The 1<sup>st</sup> class MV Avangard





# Know Before You Go!

**Reservations and Deposits:** A \$750 per person deposit is required to confirm your space on this journey. Deposits can be made online via credit card or by calling the Earthbound office at 206.842.9775. A deposit packet will be emailed confirming the receipt of your deposit. Deposits are refundable, minus a \$250 per person cancellation fee, for 30 days from the processing date or until 90 days prior to departure, whichever comes first. A progress payment will be due approximately five months before departure, followed by a final payment due 90 days before departure, both of which are non-refundable. In addition, all payments made within 90 days prior to the trip's departure date are non-refundable, which is why we strongly urge guests to purchase travel insurance.

**Not Included:** International airline tickets, alcoholic beverages, room service and gratuities for ship crew and staff, hotel staff, travel insurance, meals not listed in brochure, and any activities or items not listed in your itinerary.

**Physical Requirements:** It is the responsibility of each guest to be aware of their physical abilities or limitations and to be in sufficient good health to undertake the trip. [Click here](#) to read "Is an Earthbound trip right for you?" or call the Earthbound office for more details.

**Travel Insurance:** Earthbound Expeditions strongly encourages the purchase of travel insurance coverage. We include information on trip insurance in your deposit information.

**Events and Hosted Journeys:** If a planned event is cancelled for any reason, another event will be included in its place. This is not cause for refund. Events are subject to change. Also, if a host or special guest is unable to attend as planned, Earthbound Expeditions will do its utmost to find another host who has similar interests, talents, and expertise. The inability of a host to participate in a tour is not grounds for a full or partial refund.

**Terms & Conditions:** Click [here](#) to read the full terms and conditions.

## RESERVATIONS & QUESTIONS

206.842.9775

[info@earthboundexpeditions.com](mailto:info@earthboundexpeditions.com)



**EARTHBOUND  
EXPEDITIONS**

Earthbound Expeditions Inc.  
P.O. Box 11305, Bainbridge Island, WA 98110 USA  
Tel: 206.842.9775  
[www.EarthboundExpeditions.com](http://www.EarthboundExpeditions.com)