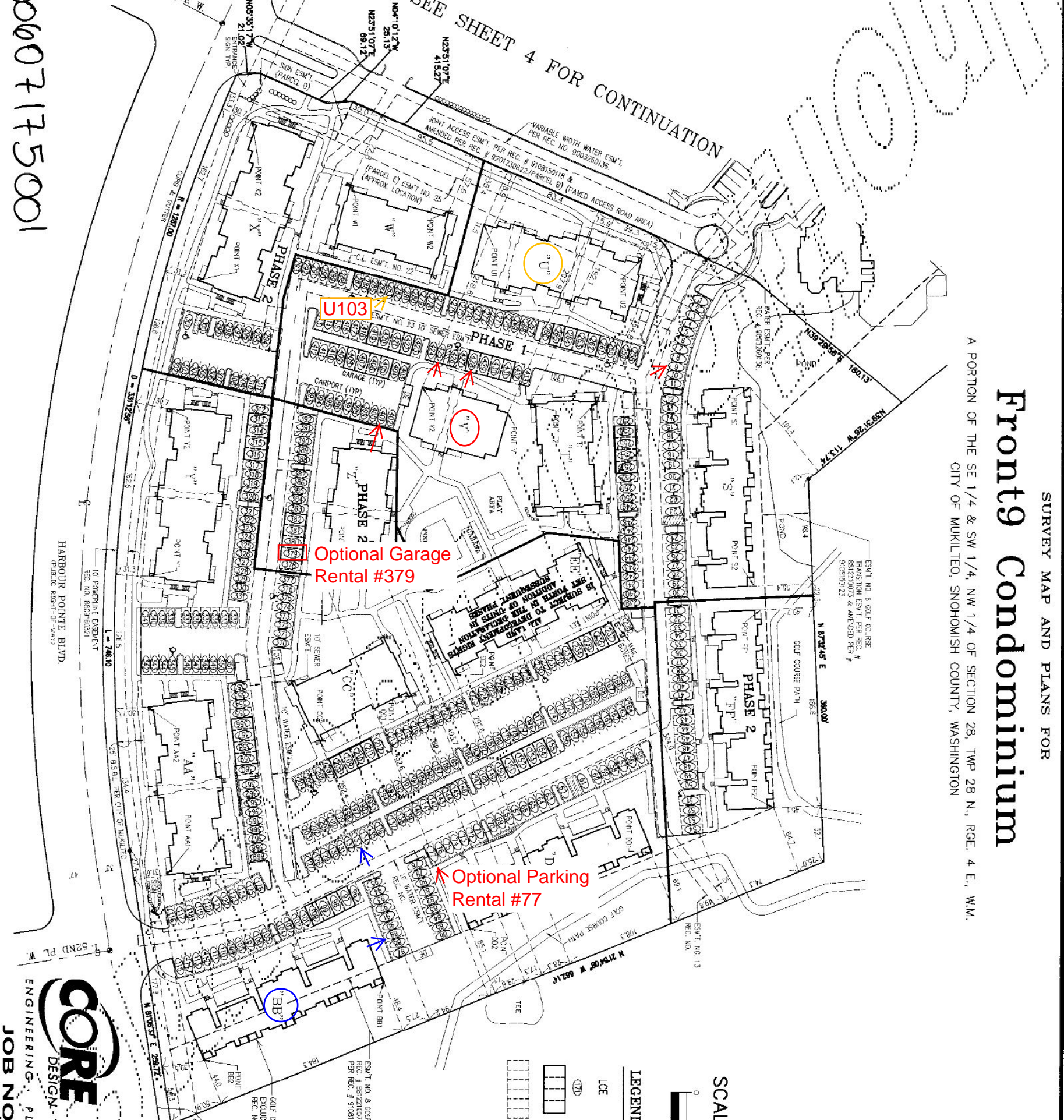


# Front9 Condominium

SURVEY MAP AND PLANS FOR

A PORTION OF THE SE 1/4 & SW 1/4, NW 1/4 OF SECTION 28, TWP 28 N., RGE. 4 E., WM.  
CITY OF MUKILTEO, SNOHOMISH COUNTY, WASHINGTON



**Optional Garage Rental #379**

**Optional Parking Rental #77**

HARBOR POINT BLVD.  
PUBLIC RIGHT-OF-WAY

0607175001

CORE DESIGN  
ENGINEERING, P.L.L.C.