

H1-315CKW-WNB

Detailed Description - Ballast

Performance			
Lamp	Number	1	
	Watts	315W	
InputVolts	120V	240V	
Input Current	2.89A	1.42A	
Input Power	343W		
Min Power Factor	0.95		
THD	<15%		
Crest Factor	<1.7		

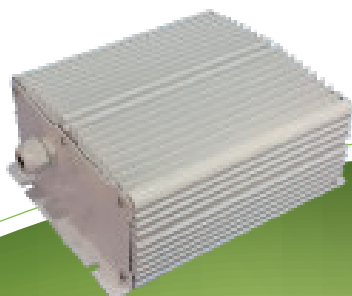
Physical			
Case Length	215mm	8.46"	
Case Width	178mm	7.01"	
Height	92.5mm	3.64"	
Mounting Length	203mm	8.01"	
Mounting Width	100mm	3.94"	
Weight	3.0kg	6.62lb	

Protections

1. End of Lamp Life(EOL)Protection
2. Short circuit protection
3. Open circuit protection
4. Ignition failure protection
5. Thermal protection

Installation & Application Notes

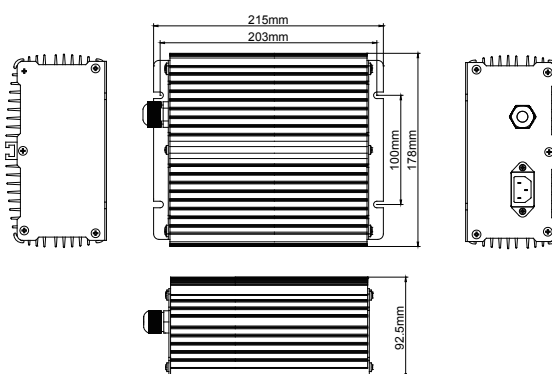
1. Max. allowable case temperature: 75°C/167°F.
2. Ambient Temperature: -20...+55°C/-4...+131°F.
3. Ignition voltage is 5kV.
4. Power must be cycled off-then on, after replacing the lamp.



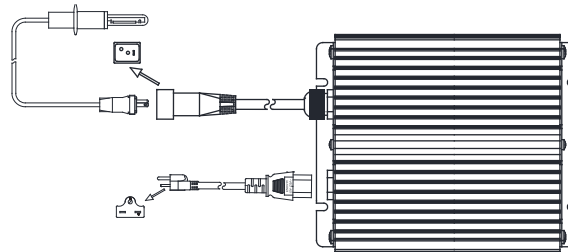
Performance Requirements:

Rated mains voltage:	120-240V
Voltage range (+/-10%):	108-264V
Main frequency:	50/60Hz
Operation frequency :	140-220Hz

Main Dimension



Wiring Diagram



Ballast Case must be Grounded

Tcase max=75°C/167°F

