

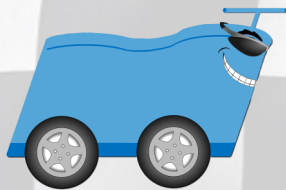
Cruzin Cooler®

To order parts, accessories or for more information about new Cruzin Cooler® products go online to:

www.cruzincooler.com

Breebb, Inc. is the exclusive global manufacturer of the Cruzin Cooler® and licensed patents, patents pending and trademark/service marks on the concepts and designs surrounding our motorized ice chests.

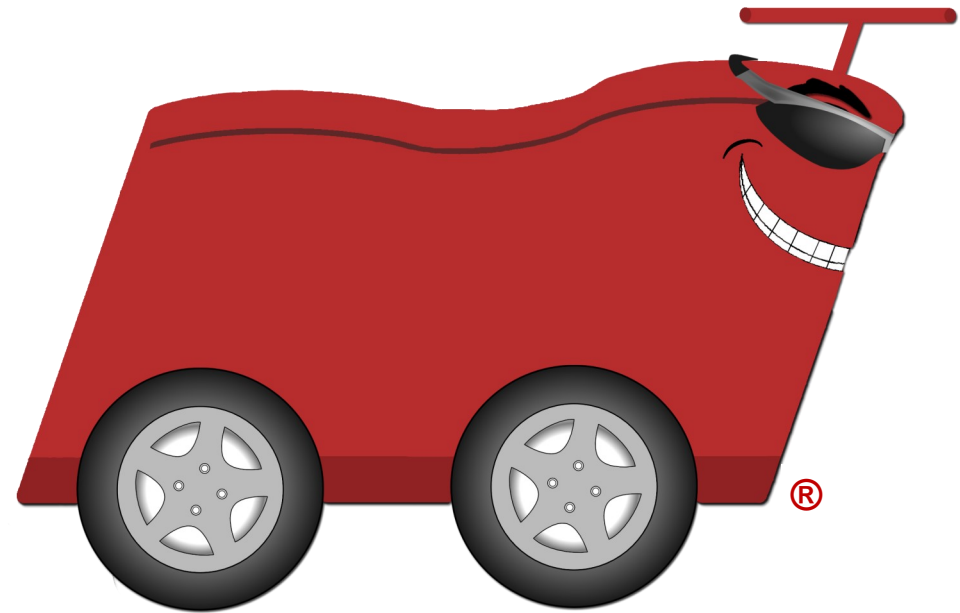
Copyrights, trademarks, patents and designs are the sole and exclusive property of Breebb, Inc. Federal Law strictly prohibits the unauthorized reproduction, copying or use of any mark, design or copyrighted material. All rights reserved.



Breebb, Inc. — Houston, TX
800-359-5199

Revision 07-2019. © Copyright 2013-19 Breebb, Inc.
Patents Pending-All rights reserved.

Cruzin Cooler®



Owner's Manual HUB SERIES CRUZIN COOLER®

UNITED STATES PATENT
Patent # D516,869



PLACE
STAMP
HERE

Breebb, Inc.
Product Registration
2086 Afton St
Houston, TX 77055

RIDER SAFETY

- Do not operate a Cruzin Cooler® without both hands on the steering handles. Slight road imperfections could initiate the front wheel to shake or cause the wheel to turn unexpectedly.
- Do not operate mobile device while driving
- Do not ride with any loose objects attached to the handlebar or any other part of the Cruzin Cooler®.
- Do not ride while intoxicated or while using medications which might make you impaired.
- Do not “ride double.” The Cruzin Cooler® is designed to carry only one rider on a single unit.
- Do not modify or alter the speed or power of the motor of the vehicle. All modifications immediately VOID the warranty of the unit.

LIMITATIONS The Cruzin Cooler® is not indestructible. If you misuse your Cruzin Cooler®, it can be damaged by stress or fatigue. Any damage can drastically reduce the life of the internal frame, fork, or components. The Cruzin Cooler® is designed to withstand only “normal” riding. The following riding practices apply high stress, increase the risk of damage to your Cruzin Cooler® and increase the risk of injury to the operator/driver:

- Driving over obstacles and rocks
- Jumping your Cruzin Cooler®
- Performing stunts
- Competitive riding
- Off-road riding
- Impacts or crashes
- Any abnormal riding
- Multiple riders on a single unit

Each of these practices increases the stress on every part of your Cruzin Cooler®. Frames or parts under high stress may fatigue prematurely, causing them to break and increasing the risk of injury to the operator/driver and will void warranty.

7 DAY RETURN POLICY

The purchaser may return their unit within 7 days of receipt of the unit. The purchaser is responsible for any shipping costs. The unit must be free of wear, tear, damages and in original packaging. The unit must be returned to the place of purchase. It will be inspected upon arrival before a refund is issued. Any returns after the 7 day period will incur a 20% restocking fee.

ACCIDENT PREVENTION Always operate the Cruzin Cooler® on smooth, level pavement away from of obstacles and holes. Proper inspection and maintenance of your cooler is essential to your safety. Inspect your Cruzin Cooler® frequently and follow the maintenance schedule in this manual.

2. WHAT'S INCLUDED

Unpack the box and check for the following components and inspect for any damage prior to assembly (**Keep the box if you ever need to return the cooler for service**):

- A. Cooler body with Front Fork Motor Assembly, Brake Lever and Throttle
(Sport model includes Phone Holder and Light and Horn controls)
- B. Steering Neck with Handle Bar
- C. Front Mount Bracket
- D. Battery Charger
- E. Handle Grips
- F. Drink Holder
- G. Tool Kit Pouch
 - 1.Allen Wrench Set
 - 2.Wrench Set
 - 3.Double-Ended Screw Driver and Handle Set
 - 4.Front Steering Mount Bolts (3) Large, (2) Small
 - 5.Set of (2) Metal Hinges with (12) Screws for the Main Lid.
 - 6.Set of (2) Plastic Hinges with (8) Screws for the Drink Holder.
 - 7.Lid Latch with (2) Screws.

- Remove the Battery Pack while assembling your unit.
- Small screws, nuts, or tools are involved in the assembly. These may be a choking hazard. Please keep small children away while assembling your unit.

To register your product, fill out the form below, cut it out and mail it with a copy of your original receipt to the following address:

Breebb, Inc.
Product Registration
2086 Afton St
Houston, TX 77055

REGISTRATION FORM

NAME: _____

ADDRESS: _____ APT/STE# _____

CITY: _____ STATE: _____ ZIP: _____

PHONE: _____

EMAIL: _____

SERIES _____ MODEL# _____ COLOR _____

SERIAL # _____

PLACE OF PURCHASED: _____

DATE OF PURCHASE: _____ AMOUNT OF PURCHASE: _____

I would would not like updates for new products.

Breebb, Inc. warrants products to be free of manufacturing defects for a period of 120 days from the date of original purchase. This warranty does not cover wear and tear, tires, tubes, brakes or cables, water damage to any part of the unit, overloading, physical damages or failure from misuse. This limited warranty is issued to the original purchaser only and proof of purchase must be provided with all warranty service claims. If there is a defect in workmanship or materials during the warranty period, Breebb, Inc. will repair, replace or refund the product, at our option. This warranty is voided if the product is used in a manner other than for what it was designed for, modified in any way, overloaded, leased or rented, used for racing or for off road purposes, unreasonably used, improperly assembled, or damaged by accident, negligence, or misuse. The manufacturer is not liable for incidental or consequential damages or losses due directly or indirectly from the use of this product. THIS LIMITED WARRANTY EXCLUDES shipping costs, compensation for all inconvenience or loss of use, any consequential or incidental damages. RETURNS must be authorized by place of purchase, must be within the warranty period and must be returned to the place of purchase for replacement or refund. This limited warranty expires 120 days after the purchase date, and Breebb, Inc. will not cover defects or damages to the Cruzin Cooler® or components.



17. TROUBLESHOOTING

A. The electric unit will not start, what should I do?

Here is the checklist of things to check, however if you go to www.cruzincooler.com and go to the service area you will find a variety of useful articles and videos on how to fix your cooler.

BEFORE DOING REPAIR WORK ON YOUR UNIT, PROP THE DRIVE WHEEL SO THAT IT IS FREE TO TURN WITHOUT TOUCHING THE GROUND.

1. **The charger never turns red when I plug it in, just stays green.** Check for loose wire on the charger plug and at the charger port. You may have a bad charger, battery pack or ECM (Electronic Control Module). You can use a volt meter to check the output of the charger compared to the output printed on the charger. It should be about 2V higher.
2. **The lights on throttle come on but it won't go.** Be sure you are not engaging the brake lever and that the charger is unplugged from the unit. Check for loose wiring. Use a volt meter to check the battery voltage into the ECM to be sure it is the rated voltage of your unit.
3. **The power lever indicator on the throttle shows low after a few minutes of riding and the light turned green on the charger.** This could be caused by a bad cell in the battery pack, the charger or ECM. Check voltage from your charger and also check the voltage to the MOTOR from the ECM to see if you get a big drop from the battery or the output when the throttle is depressed. If the voltage from the battery input to the ECM stays close to the output voltage to the motor you have a bad battery. You can have the batteries checked at most auto parts stores and battery stores via a load test.
4. **There is a clicking noise when I drive.** This may be caused by a bad bearing or something hitting the brake caliper. Check that the wheels spin free and nothing interrupts the rotation of the spin
5. **The Cruzin Cooler seems too slow.** Check to make sure all wheels are turning freely. The front power wheel will have some resistance but be sure the brake caliper is not hanging or dragging on the brake disk. If so adjust the caliper so the wheel turns freely. Turn the adjustment knob on the caliper to move it from side to side. You may need to adjust this to keep the brake caliper from rubbing the side of the brake disk.
6. Low tire pressure will run the batteries down quickly! Be sure tires are filled to the maximum specified on the wheel.
7. **My unit is under warranty and it won't start, what should I do?** Follow the steps above to try to solve the issue first. If the issue can not be resolved, call Cruzin Cooler® at 800-359-5199 or email service@cruzincooler.com.
8. **The Batteries** The batteries in your unit are wired in series for a 24volt or a 48volt system depending on your model. If you notice a leak from the battery case dispose of it immediately as according to local disposal of hazardous waste laws.

3. ASSEMBLY OF THE LID

1. Attach the lid.
 - a. Place the Main Lid onto the cooler body.
2. Attach the Drink Holder
 - a. Place the Drink Holder on the Main Lid.
 - b. Attach the hinges using the screws found in the Tool Kit Pouch.



3. Attach the Main Lid Hinges
 - a. Attach the hinges using the screws found in the Tool Kit Pouch as shown in the pictures.



4. Attach Lid Latch.
 - a. Place the Lid Latch on the Main Lid
 - b. With the latch in the "Open" position, attach the latch using the screws found in the Tool Kit Pouch.
 - c. Close the lid and lock the latch. Insure the lid is "locked."
 - d. Make any adjustment needed.



3. ASSEMBLY I —CZ-HB BASIC

Watch a video on our website on how to put it together.

1. Mount the front wheel to the cooler body.
 - a. Place the Front Wheel Assembly against the front of the cooler body. The wires coming from the wheel axle should be on the right of the wheel
 - b. Line the 3 holes on the mount to the 3 holes on the body. Using the 3 mounting bolts located in the tool kit, finger tighten the bolts to the body.
 - c. Use the appropriate size allen wrench, alternating bolts, tighten the mounting bolts all the way.



Front Wheel Assembly



2. Add the Steering Neck.
 - a. If the bottom of the Steering Stem has a plastic cap covering, remove the cap from the stem.
 - b. Turn the plastic Restraining Ring on the neck that allows the Steering Neck Latch to open.
 - c. Release the latch to open the neck.
 - d. Loosen the Stem Wedge and bolt without removing the wedge. The wedge must stay on the Stem Bolt.
 - e. Turn the Wheel Assembly that it faces left. Open the Steering Neck so that the Steering Neck falls back toward the right.
 - f. Insert the wedge and stem of the Steering Neck in the top of the Wheel assembly.
 - g. Adjust the alignment of the Steering Neck and Wheel Assembly.



Steering Neck



Insert Steering Neck into Wheel Assembly

11. SERVICE

The most current service information can be obtained online at the Cruzin Cooler®'s web site, www.cruzincooler.com. We have service facilities throughout the United States and around the world. Please go to Service to see the authorized repair facilities. We always recommend the owner keep the original box and paperwork/proof of purchase in the event that the cooler needs to be sent for service. Email service@cruzincooler.com for questions.

12. ACCESSORIES

Accessories may be ordered through the website www.cruzincooler.com. Most accessories may be purchased from any retailer where you purchased the original unit.

13. REGISTRATION

There are two ways to register; you can either register your cooler by email to register@cruzincooler.com, or by mailing the registration form found at the back of the manual.

14. PARTS

Replacements parts are available online at www.cruzincooler.com.

15. Return Policy

The purchaser may return their unit within 7 days of receipt of the unit. The purchaser is responsible for any shipping costs. The unit must be free of wear, tear, damages and in original packaging. The unit must be returned to the place of purchase. Once received, it will be inspected upon arrival before a refund is issued. Any returns after the 7 day period will incur a 20% restocking fee. Returns will not be excepted after 120 days.

16. TECHNICAL SPECIFICATIONS

PRODUCT SPECIFICATIONS CHART

Model	Volts	H	L	W	Weight w/o Battery	Load Capacity*	Storage Capacity	Speed	Battery Weight	Motor Output
		Assembled								
		Unassembled								
CZ-HB Basic	24volt	30 in	35 in	17 in	60 lbs	220 lbs	24 cans + Ice	9 mph	20 lbs	250 Watt
		20 in	27 in	17 in						
CZ-HB Sport	48volt	34 in	39 in	19 in	65 lbs	300 lbs	24 cans + Ice	14 mph	38 lbs	500 Watt
		21 in	27 in	19 in						

* Load weight includes the rider plus any cargo inside the unit and anything in tow.

8. CLEANING

The outside body and storage compartment of the Cruzin Cooler® may be cleaned with warm soapy water or any non-bleach household cleaner. Do not get water in to the mechanical area. This could cause failure of electric components. Wipe down mechanical area with a clean rag. If a cleaner is needed. Spray a rag first then wipe the interior. DO NOT USE alcohol, bleach, solvents, alcohol-based products, bleach-based products or ammonia based products. These products may melt or discolor plastics and decals over a period of time.

9. PRODUCT/SERVICE WARRANTY

Breebb, Inc. warrants products to be free of manufacturing defects for a period of 120 days from the date of original purchase. This warranty does not cover wear and tear, tires, tubes, brakes or cables, water damage to any part of the unit, overloading, physical damages or failure from misuse. This limited warranty is issued to the original purchaser only and proof of purchase must be provided with all warranty service claims. If there is a defect in workmanship or materials during the warranty period, we will repair, replace or refund the product, at our option. This warranty is voided if the product is used in a manner other than for what it was designed for, modified in any way, overloaded, leased or rented, used for racing or for off road purposes, unreasonably used, improperly assembled, or damaged by accident, negligence, or misuse. The manufacturer is not liable for incidental or consequential damages or losses due directly or indirectly from the use of this product. THIS LIMITED WARRANTY EXCLUDES shipping costs, compensation for all inconvenience or loss of use, any consequential or incidental damages. RETURNS must be authorized by place of purchase, must be within the warranty period and must be returned to the place of purchase for replacement or refund. This limited warranty expires 120 days after the purchase date, and Breebb, Inc. will not cover defects or damages to the Cruzin Cooler® or components.

10. DISCLAIMER

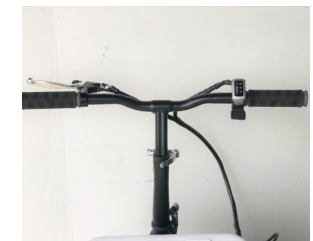
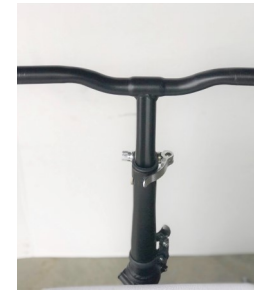
Purchaser together with its assigns and Cruzin Cooler® users indemnifies, protects, defends and holds harmless Breebb, Inc. its partners, officers, employees and agents, from and against any and all claims, costs, liabilities, losses, damages, injuries, judgments and expenses (collectively, the "Claims" including, without limitation, attorney's fees, court costs, including those incurred at the trial and appellate levels and in any bankruptcy, reorganization, insolvency or other similar proceedings, and other legal expenses, arising out of or resulting from: (i) accidents, injuries or death from Cruzin Cooler® products; (ii) any misrepresentation, breach of warranty or negligence of Breebb, Inc., its directors, officers, managers, employees or agents, and (iii) incidental or consequential damages or losses due to directly or indirectly from the use of this product. Each purchaser states that he or she has read the Safety Warnings, Warranty and Disclaimer and understands and agrees to these terms, as a condition of operation of any Cruzin Cooler® product.

3. ASSEMBLY I —CZ-HB BASIC—cont'd

2. Add the Steering Neck. Cont'd
 - h. Tighten the Stem Bolt at the top of the Steering Stem with the appropriate allen wrench.
 - i. Close the neck and turn the retaining ring so that it secures the closed latch.



3. Adding the handlebars.
 - a. Open the locking cam at the top of the stem
 - b. Insert the T-Bar into the stem. Close the lock the cam shut to hold the T-Bar tight.
 - c. Add the Throttle to the right handle bar.
 - d. Add the Brake Lever to the left handle bar
 - e. Add the Hand Grips to both handle bars. Adjust and tighten the Throttle and Brake Lever into their final position.
 - f. Make any final alignment adjustments as needed.



ASSEMBLY II —CZ-HB SPORT

Watch a video on our website on how to put it together.

1. Mounting the Front Mount Assembly to the cooler body.
 - a. Place the Front Mount Assembly against the front of the cooler body.
 - b. Line the 3 holes on the plate to the 3 holes on the front of the body and the 2 holes on the bottom bracket to the 2 holes on the bottom at the front of the body.
 - c. Using the 3 mounting bolts located in the tool kit and the 2 bolts from the Front Mount Assembly, finger tighten the bolts to the body. Using the appropriate size wrenches, tighten the mounting bolts by alternating turns at each bolt.



Front Mount Assembly



Front Mount Assembly On Front of Body



Front Mount Assembly On Bottom of Cooler

2. Assembling the Motor and Fork
 - a. Remove the Steering Nuts and bearings from the Tool Kit Pouch.
 - b. Place the first bearing ring on the neck with bearing balls facing up.
 - c. Insert Fork Neck into the Front Mount Assembly with the motor wires to the right.
 - d. Place the second bearing ring on the Fork Neck bearing balls facing down.
 - e. Add the Steering Nuts to the Fork Neck; Nut with the bowl facing down, then the second nut.



Steering Neck Bearings, Top Steering Nut, Steering Nut with Bowl.

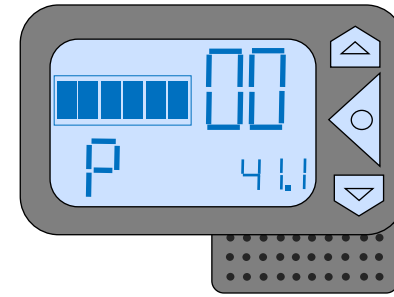


Steering Neck Bearing



Top Steering Nut(left arrow), Steering Nut with Bowl(up arrow)

SPORT MODEL - THROTTLE DISPLAY SETTINGS

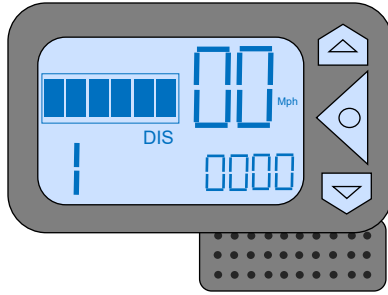


3. PARAMETER SETTINGS:

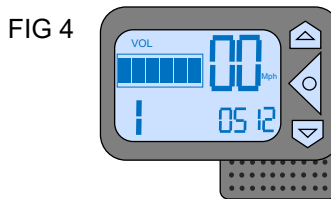
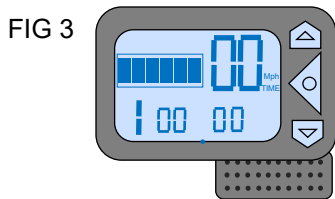
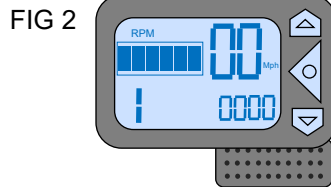
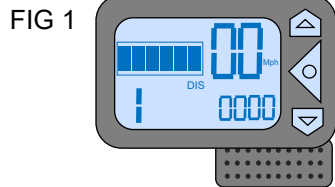
To enter the parameter settings program, press and hold the Speed Up and Speed Down button till a large "P" appears in the lower left portion of the display. To move through the programs press the POWER button. Notice the large number in the top right of the display change from "00" to "08". To change the settings in each program, press the up or down button to adjust the settings of the program. The programs are as listed in the table below

Program Number	Program Description	Recommended Settings
P-00	Low Voltage Setting	41.1
P-01	Wheel Diameter Setting	5.5
P-02	Number of Pole Pairs Setting	20
P-03	Speed Signal Setting	000
P-04	Kilometer/Mile Setting	0-Kph, 1-Mph
P-05	Non-Zero/Zero Start Setting	000
P-06	Cruise Setting	000
P-07	Hard/Soft Start Setting	000
P-08	Odometer Setting	Press down button to reset to "000"

SPORT MODEL - THROTTLE DISPLAY SETTINGS



- BUTTONS:** There are 3 buttons to the right of the display:
 POWER, SPEED UP, SPEED DOWN
- OPERATION -** Hold the POWER button till the display lights up.(3-4 seconds)
 Power will be cut off automatically after 3 minutes of no activity.
 To turn off manually, press and hold the POWER button till the display reads "OFF".
 Press the POWER button to scroll through the different operations
 - Distance (FIG 1)
 - RPM (FIG 2)
 - Time (FIG 3)
 - Voltage (FIG 4)



ASSEMBLY II —CZ-HB SPORT—cont'd

- Adding the Steering Assembly to the Front Wheel Assembly
 - Loosen the allen head bolts on the Neck Collar with the appropriate allen wrench.
 - Add the Steering Assembly to the Fork. and align the Handlebars.
 - Slide the Neck Collar down over the Neck and Fork joint.
 - With the Steering Assembly and Fork aligned, tighten the allen head bolts on the Collar.



Steering Assembly with Neck Collar



Steering Assembly aligned with Neck



Tighten the Neck Collar

- Place Light/ Horn Controls then Front Brake Lever onto the left handle bar.
- Place the Throttle then Rear Brake Lever onto the right handle bar.
- Slide the Hand Grips onto the Handle Bars.
- Adjust position of the components to personal comfort then add the phone holder to desired position.
- Tighten all using the appropriate allen wrenches.
 - Be sure not to over tighten the throttle component. Tightening too much will cause the base to crack. Be cautious to leave enough room between the Throttle and the grip to allow free retraction for the Throttle Thumb Lever.



Left Brake Lever, Light and Horn Buttons, Phone Holder



Throttle with Display, Right Brake Lever



Left Assembled Handle Bar



Right Assembled Handle Bar

4. HOW TO OPERATE

- A. Charge the battery pack completely on your new cooler prior to your first use. Plug in the charger to the battery pack. **DO NOT FORCE THE CONNECTOR!** Follow the instructions under “HOW TO USE YOUR CHARGER”. Place the battery pack into the rear component of the unit with the receptacles facing the right (hinged) side of the unit. Connect the battery pack to the unit with the power cord.
- B1. **Sport Model**
- Insert the key into the key switch at the rear of the unit. Turn the key 2 clicks for the “On” position.
 - At the Throttle, press and hold the “On/Off” button until the display lights up; middle button located to the right of the throttle display. The throttle display will light up to indicate the unit is on..
- B2. **Basic Model**
- Press the “On/Off” button at the throttle. The throttle power indicator lights will light up.
- C. Check the brakes by squeezing the brake lever. You can adjust the brake tension by shortening the cable at the back brake caliper by loosening the cable clamp bolt and taking slack from the cable. You can also fine adjust the brakes from the threaded nut on the brake lever assembly by turning clockwise facing the end of the brake handle, which effectively expands the sleeve thereby shortening the cable.
- D. **PARKING BRAKES:** The Brake Levers feature a parking lock. With the lever squeezed, press in the Brake Lock at the front of the lever, then release the lever. To release the Lock, squeeze the Brake Lever. The Brake Lock will release.
- E. To engage your cooler, press the thumb lever down. **Start off slow to get familiar with the driving characteristics of your new Cruzin Cooler®.** Return the lever to its original position to slow down and stop.
- F. Check tires for proper inflation as indicated on the tire. BASIC: 36psi, SPORT: 45psi
- G. **AVOID HOLES AND BUMPS.** The Cruzin Cooler® is designed for operation on smooth, level surfaces, free from holes and obstacles. These units have a low clearance and are limited as to what they will go over. Uneven terrain may cause additional stress to the unit structure.
- H. **NEVER TURN YOUR COOLER SHARPLY** Turning too sharply at any speed could cause the cooler to tip on its side, causing damage to the unit and injury to the operator/driver. Lean slightly with the direction you want to turn.
- H. Do not operate under the influence of alcohol or drugs.
- I. When operating, always wear protective gear including an appropriate protective helmet and close toed, rubber soled shoes.
- J. **No person under the age of 17 should operate a Cruzin Cooler®.**
- K. Always follow the weight limits for your Cruzin Cooler®. The operator/driver must confirm that the total load of the operator and cooler contents are within the maximum capacity of the unit. Those specifications are shown in Section 15— Technical Specifications.
- L. Avoid riding in an area that is beyond the design of the unit. Avoid high-traffic or congested areas where you are smaller than other vehicles and might be hard to see and be seen. Check with local law jurisdiction before use to confirm legal operations.
- M. Stop the unit as gradually as possible. Always keep a safe stopping distance between you and other objects. Applying sudden or excessive braking force may cause the rider to pitch forward. This may cause an accident with damage to the cooler and injury to the operator/driver.
- N. If the unit tips to either side or forward, **DO NOT JUMP OFF.** Brace your feet on either side of the ground and release throttle immediately.
- O. If the motor or ECM becomes hot to the touch or if melted wires are apparent, turn the unit to the off position and do not use.

5. HOW TO USE YOUR CHARGER

- Turn off the power button on the throttle (also turn the key to off position on Sport model) before connecting the charger plug to the charging port located on the battery pack.
 - Plug the charger plug into the battery pack first and then into a wall outlet.
 - DO NOT FORCE THE CONNECTOR INTO THE PORT ON THE BATTERY PACK.** The charger plug fits one way into the charger port. Line up the groove on the plug to the corresponding ridge in the female charging port.
 - A red light on the charger will come on while the battery pack is charging. Once the charge is complete the light on the charger will turn green.
 - The charger will need 6-8 hours of charging to reach the full battery capacity if pack is completely dead.
 - The CZ-HB models are 24V systems, and the CZ-HB Sport models are 48V systems. Using the incorrect charger can cause irreparable damage to the batteries and/or the electrical system of the unit. Check the label on the back of the charger and see the OUTPUT voltage.
- CAUTION!** Do not leave the battery charger plugged into the battery pack more than overnight. Place the charger and the battery pack on non-combustible surfaces. Keep the cooler and charger away from other combustibles, fuels, space heaters or other direct heat sources.

6. WHERE IS IT LEGAL

Operation on public property thoroughfare (roads and highways) is governed by Federal, State and Local laws. This cooler might or might not be legal in some cities or counties around the US to operate on public property or road ways; therefore it is up to the operator to check on the legality of the operation of these coolers in their area. Many jurisdictions may allow the Cruzin Cooler® to be operated in the same class as disabled person’s vehicles. Confirm local jurisdiction laws before use. It is solely the responsibility of the operator to find out if it is legal to operate the cooler at any particular location.

7. NORMAL MAINTENENCE

- Check the tires for wear and proper inflation. If the tire pressure is too low it could cause the cooler to run slow and might drag the bottom over small obstacles. If the tires are inflated to high they may cause rubbing on the body or explode. Inflate to the maximum pressure rating of the tire as shown on the sidewall.
- Be sure the front steering is in alignment and there is no play in the steering.
- Check the rear wheel bearings and brake caliper(s) for wear and tear.

Recommended Maintenance Schedule
A-Adjust, I-Inspect, L-Lubricate

	100 Miles	200 Miles	400 Miles	600 Miles
Brake System	A	A	A	A
Tubes & Tires	I	I	I	I
Wires	I	I	I	I
Alignment	I,A	I,A	I,A	I,A