

## // 3D LAMINATE PANELS

### MEDIUM IMPACT

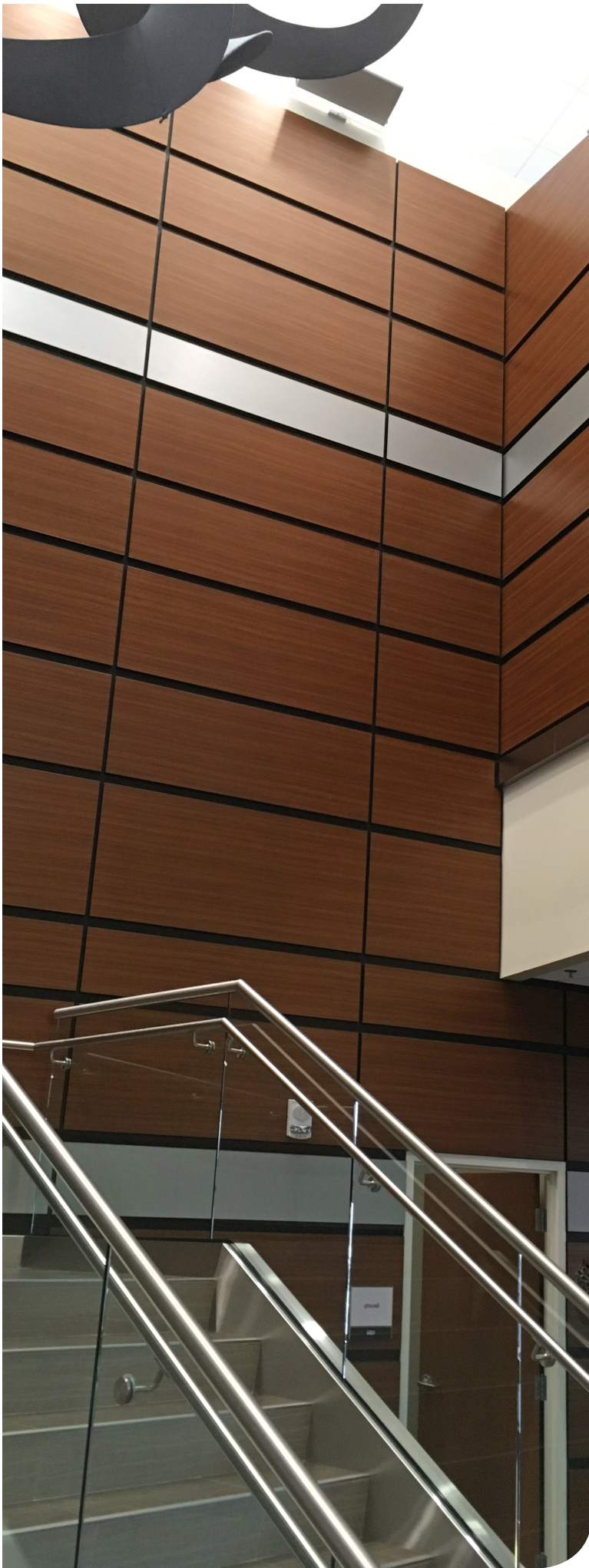
PANEL SIZES	MDF CORE THICKNESS	GRAIN (PATTERN) DIRECTION	MDF SUBSTRATES AVAILABLE	FIRE RATING	INSTALLATION VIA
<p>Maximum: 44" W x 132"L</p> <p>Minimum: 3" W x 3"L</p>	<p>Standard: 3/4"</p> <p>Optional: 1/2", 11/16", 7/8", 1"</p>	<p>Parallel to the length (vertical)</p>	<p>Standard: CARB 2-compliant, double refined MDF</p> <p>Optional: 1) No Added Urea Formaldehyde MDF 2) Moisture Resistant MDF</p>	<p>Standard: Class C (III)</p> <p>Optional: Class A (I)</p>	<p>Z-Clips (recessed routing available)</p> <p>Z-Clips and pertinent hard- ware available for purchase upon request</p>
SURFACE MATERIAL	BALANCING BACKER SHEET	PRODUCT APPLICATIONS	EDGE PROFILES	FINISH OPTIONS	TRIMS
<p>3D laminates (film veneers) of .012" thickness meeting Spectrim's high standards for durability, impact resistance, stain resistance, cleanability and UV resistance.</p>	<p>Standard: .012" Antique White film veneer</p> <p>Optional: Same film veneer as applied to panel face</p>	<p>Decorative Wall Panels Assisted Living Headboards Elevator Panels Cabinet Doors Shelving Hospital Headwall Panels Drawer Fronts</p>	<p>Standard: Square w/ slight eased roundover all leading edges</p> <p>Available Roundovers: 1/16", 1/8", 1/4"</p> <p>Optional: 1) Beveled 2) Ogee</p>	<p>Standard options and hundreds of non-standard options available allowing for creation of the following looks:</p> <ul style="list-style-type: none"> <li>• Wood Grains</li> <li>• Solid Colors</li> <li>• Metallics</li> <li>• Textile Abstracts</li> <li>• Stone</li> </ul>	<p>Consult Spectrim Customer Service for application of trims provided by others</p>

## // FUSED EDGE PANELS

### MEDIUM OR HIGH IMPACT

PANEL SIZES	MDF CORE THICKNESS	GRAIN (PATTERN) DIRECTION	MDF SUBSTRATES AVAILABLE	FIRE RATING	INSTALLATION VIA
<p>Maximum: 48" W x 144"L Minimum: 6" W x 6"L</p>	<p>Standard: 3/4"</p> <p>Optional: 5/8", 11/16"</p>	<p>Parallel to the length (vertical)</p>	<p>Standard: Carb 2-compliant double-refined MDF</p> <p>Optional: 1) No Added Urea Formaldehyde MDF 2) Moisture Resistant MDF</p>	<p>Standard: Class C (III)</p> <p>Optional: Class A (I)</p>	<p>Z-Clips (recessed routing available)</p> <p>Z-Clips and pertinent hard- ware available for purchase upon request</p>
SURFACE MATERIAL	BALANCING BACKER SHEET	PRODUCT APPLICATIONS	AVAILABLE EDGE BANDING	FINISH OPTIONS	TRIMS
<p>Medium Impact Panels:</p> <p>3D laminates (film veneers) of .012" thickness meeting Spectrim's high standards for durability, impact resistance, stain resistance, cleanability and UV resistance.</p> <p>High Impact Panels:</p> <p>Spectrim .040" Ven4ma High Impact Material Consisting Of .012" High Durability Film Veneer Flat Laminated To .028" ABS Backer.</p>	<p>Medium Impact Panels:</p> <p>Standard: .012" Antique White film veneer</p> <p>Optional: Same film veneer as applied to panel face</p> <p>High Impact Panels:</p> <p>Standard: Wilsonart V32 Frosty White #1573 High Pressure Laminate</p> <p>Optional: Same Ven4ma As Applied To Panel Face.</p>	<p>Medium Impact Environments:</p> <p>Decorative Wall Panels Assisted Living Headboards Elevator Panels Cabinet Doors Shelving Hospital Headwall Panels Drawer Fronts</p> <p>High Impact Environments:</p> <p>Decorative Wall Panels Assisted Living Headboards Elevator Panels Cabinet Doors Shelving Hospital Headwall Panels Drawer Fronts Bathroom Partitions</p>	<p>Thickness: 1 mm, 2 mm</p> <p>Widths: 11/16", 7/8"</p> <p>Unfinished edges also available</p> <p><i>Consult Spectrim Customer Service for minimum order quantities related to selection.</i></p>	<p>Standard options and hundreds of non-standard option available allowing for creation of the following looks:</p> <ul style="list-style-type: none"> <li>• Wood Grains</li> <li>• Solid Colors</li> <li>• Metallics</li> <li>• Textile Abstracts</li> <li>• Stone</li> </ul>	<p>Consult Spectrim customer service for application of trims provided by others</p>



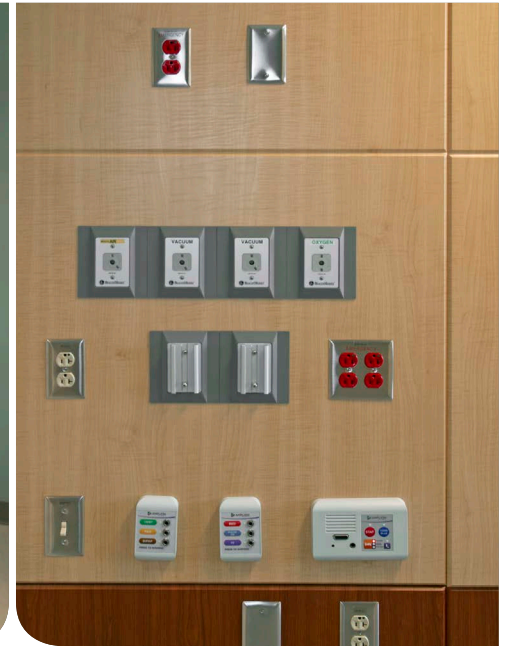


DECORATIVE  
WALL PANELS



800.437.0557  
sales@spectrimbp.com

## // 3D LAMINATE PANELS

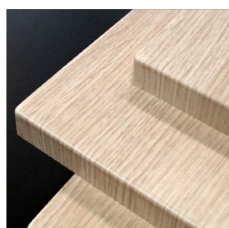


- Extremely clean panel construction consisting of film veneer vacuum pressed to MDF. The panel face and all edges are seamlessly wrapped in film veneer completely eliminating edgebanding.
- For medium impact applications including decorative wall panels, assisted living headboards, elevator panels, cabinet doors, shelving, hospital headwall panels and drawer fronts.
- Film veneers provide the best fidelity, consistency, aesthetics and texture available. Most cannot be distinguished from real wood.
- The available finish range spans from wood grains to solid colors, metallics, stone and textile abstracts.
- Easily cleanable, stain-resistant, UV-resistant and abrasion resistant.

## // 3 EDGE PROFILE OPTIONS



Beveled Edge



Squared Edge with Slight Eased Roundover



Ogee Edge



WVU Hospital | Headwall Application

## // FUSED EDGE PANELS

- The “cleanest” panel construction on the market. Visually and functionally seamless.



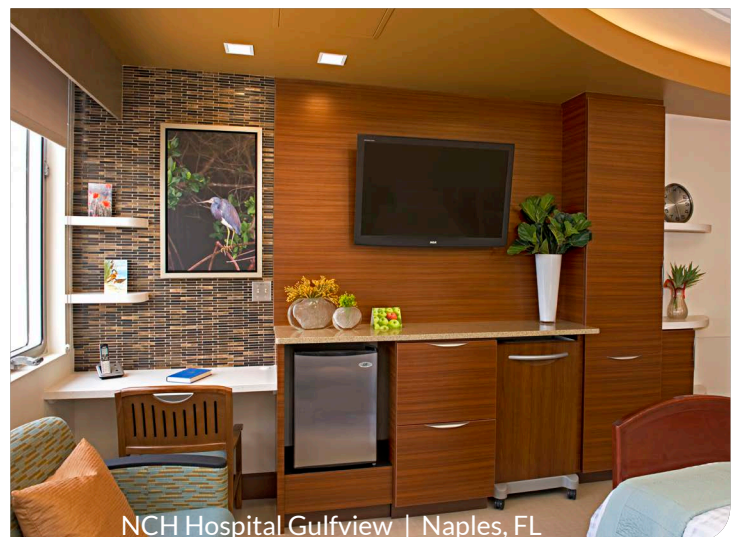
- Edge banding process creates a hermetic seal resulting in an air-tight, moisture-resistant, heat-resistant, seamless construction - there is nowhere for bacteria to collect.
- Finish options allow for wood grain, metallic, stone, textile abstract and solid-color looks.
- Perfect for healthcare, senior living and food service applications
- Construction options:
  - Medium Impact: Film Veneer on MDF
  - High Impact: Spectrim Ven4ma on MDF
- Medium and high impact construction options allow for tailoring of the panel to the demands of the environment. High impact construction is well suited for healthcare applications and high traffic corridors, lobbies and gathering spaces.
- Applications include decorative wall panels, elevator panels, cabinet doors, shelving, drawer fronts, hospital headwall panels and bathroom partitions.



Mercy Health Howland Medical Center | Warren, OH



NYC Courthouse | New York, NY



NCH Hospital Gulfview | Naples, FL