

2 0 2 1 - 2 0 2 2 S E A S O N

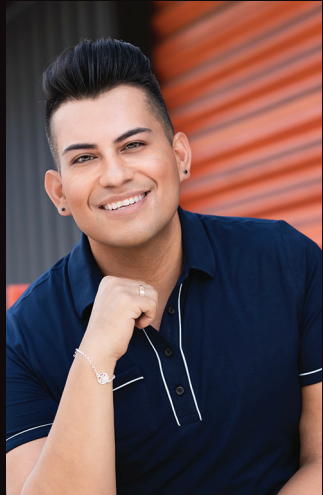
# SONG STRONG

T H E S O U N D S O F A C O M M U N I T Y R E B O R N



GMCSF

Welcome Our **NEW**  
Artistic Director,  
**GABE SALAZAR**



Welcome to the 12th season of the Gay Men's Chorus of South Florida. It is such an honor to lead this incredible group of talented and dedicated men. My love and passion for choral music is more vital than ever as it has the power to uplift, entertain, and inspire. Especially now, as we are emerging from a time of such struggle, the music we make is more important than ever. Music has kept us strong as a community, and music

will empower us to thrive in the months ahead. Together, we are "Song Strong." I have read the comments and listened to the input of our audiences, and I feel that season 12 reflects the vision I have as the artistic director and your interests, our cherished fans. We sing to serve the community, and this year we are offering concerts that are mainly upbeat and celebratory.

Our membership has bounced back stronger than ever, a reflection of how excited our guys are to sing for you once again. Thank you for your unwavering support. You are an invaluable member of the GMCSF family.

I look forward to seeing you in the audience and getting to know you.

kindest regards,  
Gabe Salazar  
Artistic Director

# SONG STRONG

Whether it emanates from balconies during a shutdown or rings through the halls of concert venues as we emerge, voices raised in song give us the strength to persevere and connect. We are song strong, and through music, we bring energy and purpose to a community reborn.





# Holidays WITH GMCSF

Featuring multi-platinum recording artist and actress  
**DEBORAH COX**

**December 17, 8 PM**  
Holidays at Sunshine Cathedral

**December 19, 7 PM**  
Holidays at Hard Rock Live  
with Deborah Cox

Hard Rock Live hosted by



Hard Rock Live sponsored by



Celebrate a newfound sense of connection with loved ones during the holiday season with the Gay Men's Chorus of South Florida. Whether at Sunshine Cathedral or Hard Rock Live at Seminole Hard Rock Hotel & Casino in Hollywood, you will find strength in gathering with friends for our highly anticipated live holiday concerts, filled with uplifting and joyous holiday music.

# DRIVEN by JAZZ

**March 25, 8 PM**  
Parker Playhouse

The pulsating rhythms and driving beats of great jazz speak to our souls' expressive and vibrant parts. In addition, this distinctly American form of music has often given voice to diverse communities, making it a draw for many great LGBTQ artists. Join us for a toe-tapping journey through great jazz tunes across the decades and the gifted LGBTQ people behind them.





# **& UNBREAKABLE & UNSTOPPABLE**

**June 24 & 25, 8 PM**  
Sunshine Cathedral

Our community just can't be kept down! No matter the challenges, we find a way to overcome them. Our 2022 Pride concert features Unbreakable: a look at LGBT history through the lens of heroes who have moved us forward. The evening will also include an explosion of triumphant gay anthems that have inspired us to be ourselves on dance floors and in communities across the globe. We are unstoppable!

Sponsored by **fAb!** FUNDING ARTS BROWARD



## **GMCSF YOUTH CHOIR**

Building a better future for all people relies on the strength and vision of our youth. Therefore, we are pleased to announce the launch of a regional LGBTQ+ youth choir, empowering the young participants to sing and serve as a shining example for others in the community. Auditions will be held across the three-county region, welcoming the next generation of singers to bring their voice and strength to our vision of a diverse, united world.

---

### **Mission:**

To sing so that LGBTQ+ people can live their truth through quality music experiences that open minds, change hearts, and affirm our common humanity.

### **Our Strength is YOU!**

Be a part of a significant cultural force that entertains and delights, while also giving voice to the LGBTQ+ community.

**ATTEND • AUDITION • DONATE • VOLUNTEER**

VISIT [WWW.GMCSF.ORG](http://WWW.GMCSF.ORG) TO BECOME A PART OF US





2040 North Dixie Highway, Suite 218  
Wilton Manors, FL 33305



This design and printing of this brochure made possible  
in part through the generous contributions of Lightship Studios  
and Associated Printing Productions, Inc.

NON PROFIT  
US POSTAGE PAID  
FT. LAUDERDALE, 33310  
PERMIT #2963