

# MAKALAPUA



## MAKALAPUA- TO BLOOSOM FORTH

3 Bedrooms, 2 Baths, Approx 1168 SqFt, Garage 489 SqFt, Walkway 94 SqFt, Front Lanai 82 SqFt, BackProch 122 SqFt Total: 1861 SqFt

The Makalapua model has a little of everything you'll want in a home. A Lanai, Separate Master Suite Wing, Walk-in Closet, loads of storage, an Angled Kitchen /Bar seats 3 to 4 and a Secured Indoor Laundry. The Pass- Thru opens to the Living and Dining area for entertaining possibilities. The Master Suite has a Separate Vanity Area from the Bath with access to the Walk-In Closet area to allow for more efficient dressing and bathing activities.

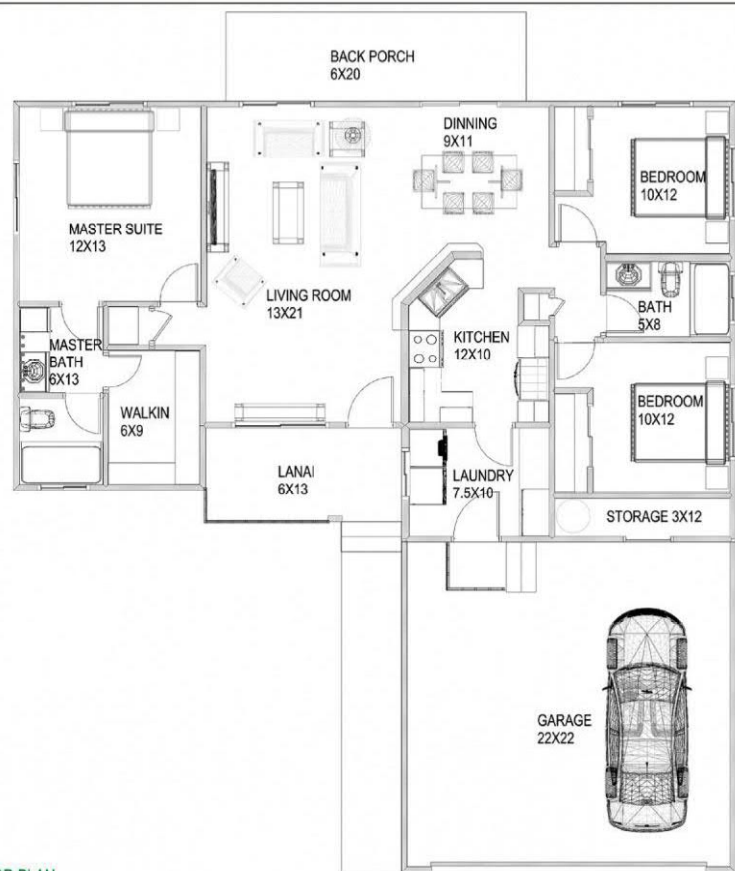
### SPECIAL FEATURES:

*Granite Counter Tops through out, Stainless Steel Appliances: Sink, Stove, Refrigerator, Microwave Hood Range*

Disclosure: The Developer, Kihei Wailani Village LLC, of the proposed Kihei Wailani Village condominium project (the "Project") is not offering to sell any units in the Project at the present time. However, interested prospective buyers may submit to the Developer a Non-Binding Pre-Registration Notice of Interest to reserve for purchase a unit in the Project. The promotional program for the Project may be changed, modified, amended, or cancelled at any time without notice at the sole discretion of the Developer. All information contained herein is subject to change without notice. If and when units are offered for sale to the public, Maui County eligibility requirements and income limits will apply and units will be subject to Buyback and other restrictions." Ver4-1-21



## MAKALAPUA



FLOOR PLAN

## Design Features:

- Covered front entry with generous covered lanai for comfortable outdoor living and an Open floor plan for gathering and flexible living.
- Weather-protected laundry area, Extra garage storage to keep supplies and equipment organized
- Solar Water Heating, energy conserving construction .Solar Electric Ready, Rain Harvesting Gutter System and Rain Garden, plus Large Trellis Green walls for a much cooler home, with Starter Native Maui Landscaping, Some Full sized Shade Trees based on LOT location

## ALL PACKAGES

- All structural framing lumber and connectors where required-treated\*
- LP Tech Shield Roof Sheathing, LP Top-notch underlayment, LP Smart Side siding trim
- Pre-Eng Wood Trusses and Pre-Eng Truss-Joists (2 Story Models)
- Custom Metal Roofing or composition shingle roofing. HI-BOR treated T1-11 plywood siding, trims and fascia.
- Drywall with bullnose for all interior walls and ceiling 5/8", Insulation for ceiling and exterior walls: R19 & R13
- Interior and exterior doors with locks, Exterior: Fiberglass, Interior: Molded\* Knob \*/Lever type Door Hardware
- Finishes: Windsor One for Closet shelves, closet Rods, metal shelf brackets, Baseboards & Casings MDF (Coronado/Colonial style)
- Primer and interior paint.
- Milgard Styleline Low-E vinyl dual-glazed sliding windows and sliding patio doors with screens
- Kitchen/Baths: Semi-custom all wood cabinets. Stainless steel range hood. Islander Cabinetry cabinets for kitchen and baths. Cognac /White Cabinets Islander Series Options: Total Cabinets/ Dewils / Shrock Counter tops: Granite Options: Quartz /Travertine /Solid Surfacing
- Plumbing Copper, Chrome faucets and trim.20-gauge stainless steel double bowl kitchen sink. Vitreous china lavatory sink.
- Acrylic tub/shower stall and Laundry tray, garbage disposal, mirrored medicine cabinets, towel bars, toilet paper holders
- Air Conditioning Ductless by Carrier
- Floor Finishes: Engineered Wood, Luxury Vinyl, Options: Carpet, Tile, Other
- Lighting fixtures: Brushed nickel fixtures. Smoke detectors and chime kit. Decora White receptacles and switches.
- Recess LED lighting on all models.
- Electrical Trim Package, Load Center /Receptacles / TV CABLE outlet

*\*Framing lumber is treated with the Hi-Bor treatment process. 20 year warranty available through current licensed pest control firms. Securing the warranty is the responsibility of the homeowner. Forms explaining procedures available upon request of homeowner*



# KIHEI WAILANI VILLAGE

RainBridge Design Essential Development has been completing sustainable projects for 45 years, our first Solar Home was built in 1975, and Peter Savio of Savio Development has been creating affordable housing in Hawaii, for even longer.

For more than a thousand years, native Hawaiians practiced sustainability as a way of life. Deeply rooted in respect for the land, air, and water, these ancient cultural practices made this a beautiful self-sustainable living community. Hawaii's clean energy goals are some of the most aggressive in the United States and have helped position the state as a nationwide leader in clean energy.

~ *WaiLani Village is designed with ALL this in mind!*

## Design Features:

- Covered front entry with generous covered lanai for comfortable outdoor living and an Open floor plan for gathering and flexible living.
- Weather-protected laundry area, Extra garage storage to keep supplies and equipment organized
- Solar Water Heating, energy conserving construction .Solar Electric Ready, Rain Harvesting Gutter System and Rain Garden, plus Large Trellis \_Green walls for a much cooler home, with Starter Native Maui Landscaping, Some Full sized Shade Trees based on LOT location

## ALL PACKAGES

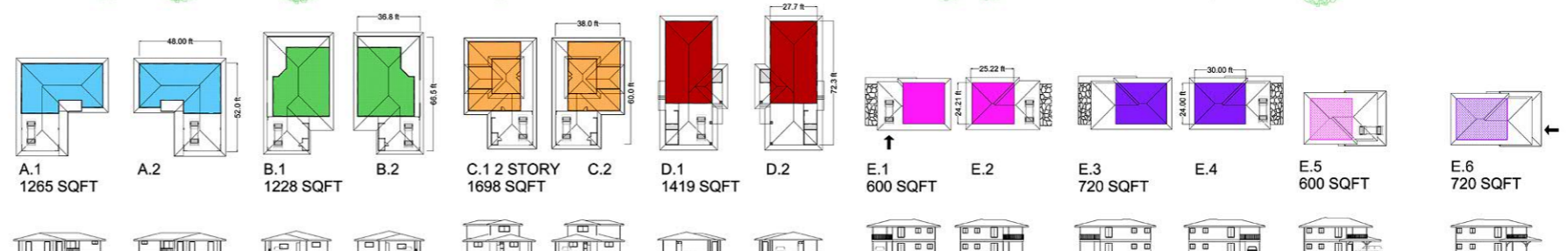
- All structural framing lumber and connectors where required-treated\*
- LP Tech Shield Roof Sheathing, LP Top-notch underlayment, LP Smart Side siding trim
- Pre-Eng Wood Trusses and Pre-Eng Truss-Joists (2 Story Models)
- Custom Metal Roofing or composition shingle roofing. HI-BOR treated T1-11 4" GROOVE plywood siding, trims and fascia.
- Drywall with bullnose for all interior walls and ceiling 5/8", Insulation for ceiling and exterior walls: R19 & R13
- Interior and exterior doors with locks, Exterior: Fiberglass, Interior: Molded\* Knob \*/Lever type Door Hardware
- Finishes: Windsor One for Closet shelves, closet Rods, metal shelf brackets, Baseboards & Casings MDF (Coronado/Colonial style)
- Primered and 2 coat interior paint finishes.
- Milgard Styline Low-E vinyl dual-glazed sliding windows and sliding patio doors with screens
- Kitchen/Baths: Semi-custom all wood cabinets. Stainless steel range hood. Islander Cabinetry cabinets for kitchen and baths. Cognac /White \_Cabinets Islander Series Options: Total Cabinets/ Dewils / Shrock Counter tops: Granite Options: Quartz/ Travertine/ Solid Surfacing
- Plumbing Copper supply, Chrome faucets and trim. 20-gauge stainless steel double bowl kitchen sink. Vitreous china lavatory sink.
- Acrylic tub/shower stall and Laundry tray, garbage disposal, mirrored medicine cabinets, towel bars, toilet paper holders
- Air Conditioning: Ductless by Carrier
- Floor Finishes: Engineered Wood, Luxury Vinyl, Options: Carpet, Tile, Other
- Lighting fixtures: Brushed nickel fixtures. Smoke detectors and chime kit. Decora White receptacles and switches.
- Recess LED lighting on all models.
- Electrical Trim Package, Load Center /Receptacles / TV CABLE outlet

\*Framing lumber is treated with the Hi-Bor treatment process. 20 year warranty available through current licensed pest control firms. Securing the warranty is the responsibility of the homeowner. Forms explaining procedures available upon request of homeowner

Disclosure: The Developer, Kihei Wailani Village LLC, of the proposed Kihei Wailani Village condominium project (the "Project") is not offering to sell any units in the Project at the present time. However, interested prospective buyers may submit to the Developer a Non-Binding Pre-Registration Notice of Interest to reserve for purchase a unit in the Project. The promotional program for the Project may be changed, modified, amended, or cancelled at any time without notice at the sole discretion of the Developer. All information contained herein is subject to change without notice. If and when units are offered for sale to the public, Maui County eligibility requirements and income limits will apply and units will be subject to Buyback and other restrictions." Ver4-1-21

## KIHEI WAILANI VILLAGE, KIHEI, MAUI, HAWAII

KIHEIWAILANIVILLAGE.COM



<b>A-1</b> 1265 SQFT	<b>A.2</b>	<b>B.1</b> 1228 SQFT	<b>B.2</b>	<b>C.1 2 STORY</b> 1698 SQFT	<b>C.2</b>	<b>D.1</b> 1419 SQFT	<b>D.2</b>	<b>E.1</b> 600 SQFT	<b>E.2</b>	<b>E.3</b> 720 SQFT	<b>E.4</b>	<b>E.5</b> 600 SQFT	<b>E.6</b> 720 SQFT
<b>A-MAKALAPUA [5 UNITS]</b> 3 Bedrooms, 2 Baths Garage, Lanai		<b>B-HONOKAA [3 UNITS]</b> 3 Bedrooms, 2 Bath Garage, Large Wrap around Lanai		<b>C-PAIA [13 UNITS]</b> 2 Story: 3 Bedrooms, 2 Bath Garage, Large Lanai		<b>D-HALE MAULOLO [6 UNITS]</b> 4 Bedrooms, 2-1/2 Baths Garage, Lanai		<b>E-HANA TOWNHOUSE</b> [E.1: 8 UNITS] [E.2: 6 UNITS] 2 Story: Level 1 and 2 2 Bedrooms, 1 Bath Patio / 1 Carport Lanai / 1 Parking Stall 2 Parking Stalls		<b>E-HANA TOWNHOUSE II</b> [E.3: 4 UNITS] [E.4: 0 UNITS] 2 Story: Level 1 and 2 2 Bedrooms, 1 Bath Patio / 1 Carport Lanai / 1 Parking Stall 2 Parking Stalls		<b>E-HANA TOWNHOUSE</b> [E.5: 30 UNITS] 2 Story: Level 1 & 2 2 Bedrooms, 1 Bath Patio / 1 Carport Lanai / 1 Carport 2 Parking Stalls	<b>E-HANA TOWNHOUSE II</b> [E.6: 6 UNITS] 2 Story: Level 1 & 2 2 Bedrooms, 1 Bath Patio / 1 Carport Lanai / 1 Carport 2 Parking Stalls

MODELS: FROM 2 BEDROOM 2 STORY TOWNHOMES,  
TO 3 BEDROOM AND 4 BEDROOM HOMES

## CONTACT:



RAINBRIDGE DESIGN DEVELOPMENT / ENA MATOI LLC  
150 Hamakua Drive-Box 367 Kailua, Oahu, Hawaii 96734  
J.R.BOHDY C: 360-223-9122 E: JRB@INEXSIS.COM O: 808-450-0624

KIHEI WAILANI VILLAGE



REVISIONS:  
02-03-21  
02-15-21

SHEET TITLE:  
SITE MAP LOTS

DATE: SHEET:

001

SITE MAP PLAN 1.1

SCALE 1" = 24'