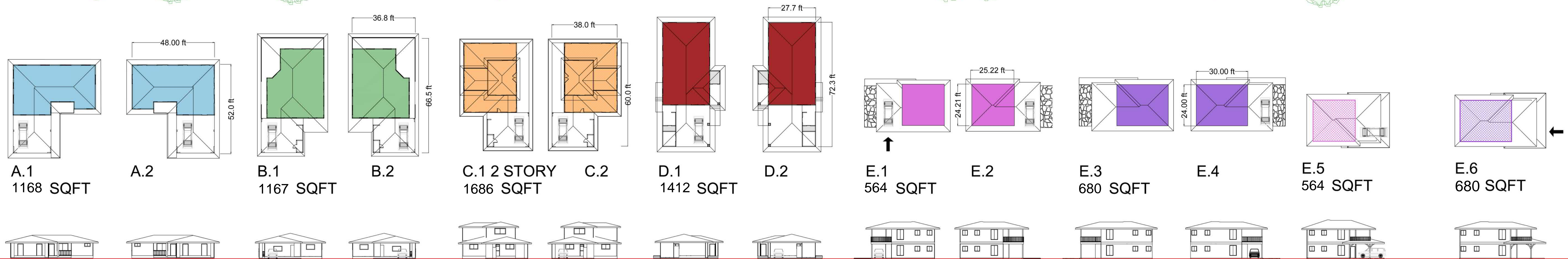
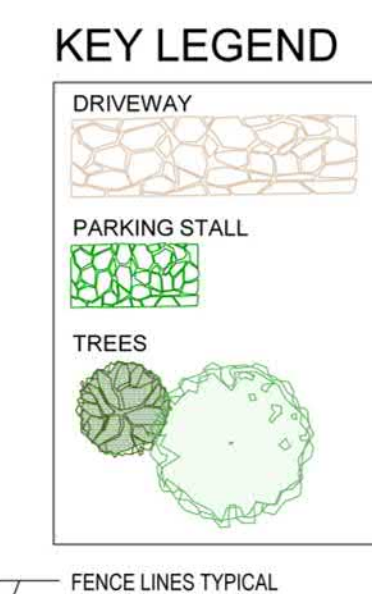


KIHEI WAILANI VILLAGE, KIHEI, MAUI, HAWAII



A-MAKALAPUA [5 UNITS]
3 Bedrooms, 2 Baths
Garage, Lanai

B-HONOKAA [3 UNITS]
3 Bedrooms, 2 Bath
Garage, Large
Wrap around Lanai

C-PAIA [13 UNITS]
2 Story:
3 Bedrooms, 2 Bath
Garage, Large Lanai

D-HALE MAULOA [6 UNITS]
4 Bedrooms, 2-1/2 Baths
Garage, Lanai

E-HANA TOWNHOUSE
[E.1: 8 UNITS] [E.2: 6 UNITS]
2 Story: Level 1 and 2
2 Bedrooms, 1 Bath
Patio / 1 Carport
Lanai / 1 Parking Stall
2 Parking Stalls

E-HANA TOWNHOUSE II
[E.3: 4 UNITS] [E.4: 0 UNITS]
2 Story: Level 1 and 2
2 Bedrooms, 1 Bath
Patio / 1 Carport
Lanai / 1 Parking Stall
2 Parking Stalls

E-HANA TOWNHOUSE
[30 UNITS]
2 Story: Level 1 & 2
2 Bedrooms, 1 Bath
Patio / 1 Carport
Lanai / 1 Carport
2 Parking Stalls

E-HANA TOWNHOUSE II
[6 UNITS]
2 Story: Level 1 & 2
2 Bedrooms, 1 Bath
Patio / 1 Carport
Lanai / 1 Carport
2 Parking Stalls

MODELS: FROM 2 BEDROOM 2 STORY TOWNHOMES, TO 3 BEDROOM AND 4 BEDROOM HOMES



REVISIONS:

02-03-21
02-15-21

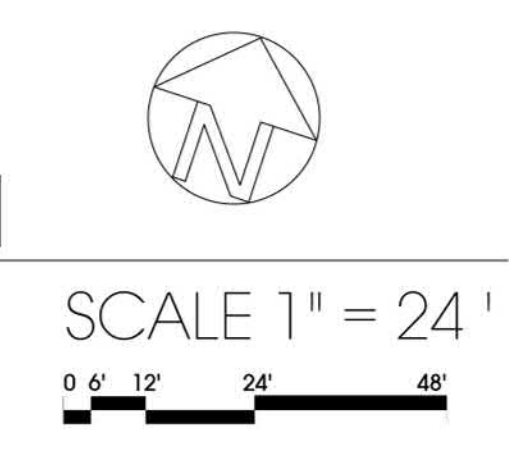
SHEET TITLE: SITE MAP LOTS

DATE: SHEET:

RAINBRIDGE DESIGN DEVELOPMENT / ENA MATOI LLC
150 Hamakua Drive-Box 367 Kailua, Oahu, Hawaii 96734
J.R.BOHDY C: 360-223-9122 E:JRB@INEXSIS.COM O: 808-450-0624

KIHEI WAILANI VILLAGE

SITE MAP PLAN 1.1



Disclaimer: The Developer, Kihei Wailani Village LLC, of the proposed Kihei Wailani Village condominium project (the "Project") is not offering to sell any units in the Project at the present time. However, interested prospective buyers may submit to the Developer a Non-Binding Pre-Registration Notice of Interest to reserve for purchase a unit in the Project. The pre-registration program of the Project may be changed, modified, amended, or suspended at any time without notice and the sale of any units in the Project is subject to change without notice. If and when units are offered for sale to the public, Maui County slightly requirements and normal rules will apply and units will be subject to Buyback and other restrictions. All information contained herein is subject to change without notice. © 2020 Rainbridge Design. HOONANI-SITEMAP_5-1PLAN3648