

# OPHTHALMIC HOSPITALIST INTEREST GROUP

## NEWSLETTER

Donna Kim, MD | Maggie Hymowitz, MD

### Next Virtual Meeting

Mark your calendars for the upcoming **AAO Open Forum - Ophthalmic Hospitalist Q&A**.

Topics include residency program director perspectives, private practice consult models, contracts and incentives, and hospitalist recruitment. This is an interactive live Q&A so bring your questions!

**Thursday Jan 14, 2021 @  
5pm PST/ 8pm EST**

[Register Here](#)

### AAO Webinar Video

Here is a [link](#) for those who wish to view the recent AAO Webinar **The Ophthalmic Hospitalist** which is also now available on the AAO website.

### Welcome New Members!

Please visit the [OHIG website](#) to confirm that your information is correct. Thank you!



### Articles

[Strategies to Address Racial and Ethnic Disparities in Vision Care Research, JAMA Ophthalmology, Nov 2020](#)

An article highlighting the importance of ensuring equitable inclusion of minority racial and ethnic groups in vision research.

[Eye Protection for Patients with COVID-19 Undergoing Prolonged Prone-Position Ventilation, JAMA Ophthalmology, Nov 2020](#)

An interesting article from Maggie and her team at Northwell showing potential adverse ocular effects from prolonged prone positioning among COVID ICU patients.

[Big Data in Ophthalmology, APA of Ophthalmology, July 2020](#)

A review of Big Data and its exciting potential applications within ophthalmology, and the challenges it poses.

\* Click on links for articles, PDF copies are also attached to email



## PEARLS

### Solution for Fogging Lenses

Frustrated with PPE related condensation on your lens during patient exams?

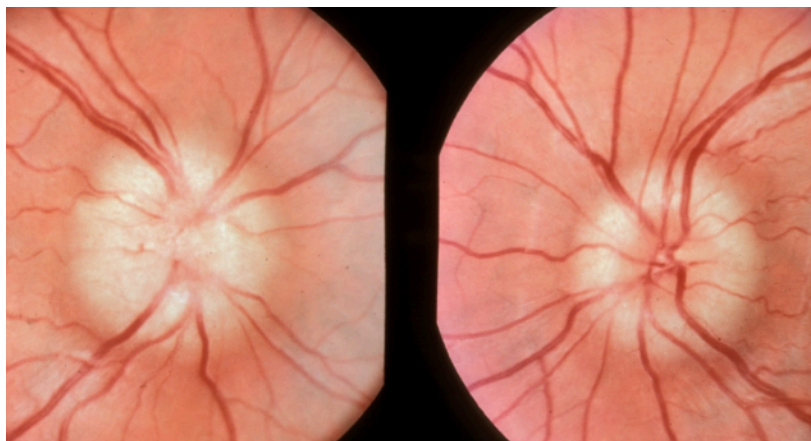
Try placing a **hand warmer** in your lens case! This will continually warm lenses to above body temperature so warm moist air directed from a patient's mask does not cause condensation on your lens.



[Click here](#) for a disposable hand warmers on Amazon that last 12 hours.

Thank you OHIG member Dr. Thomas Hwang (retina) for sharing this brilliant idea.

## CONSULT ROUNDS



It's 2:50am on a Wednesday night. The on-call ophthalmologist is at home and receives a page from the ER regarding a 9 year old female with a h/o Arnold Chiari malformation, congenital hydrocephalus, and VP shunt placement.

The patient has worsening headache and there is concern for shunt failure with resultant elevated ICP. Quick brain MRI shows possible increased ventriculomegaly. Neurosurgery requests a "r/o papilledema" consult from ophthalmology to help guide their management. The patient is nonverbal due to developmental delay and unable to comment on her vision.

What would you or your resident be expected to do?

### Options:

- A) Drive to the ER to see the patient immediately
- B) Decline the consult since the lack of optic disc edema does not rule out elevated ICP, this is a low yield consult
- C) Have the patient remain in ER observation so the eye provider can examine her during regular business hours
- D) Other - describe your hospital/ER protocol for these consults

[Click here](#) for the Survey Monkey

### DIY Consult Room

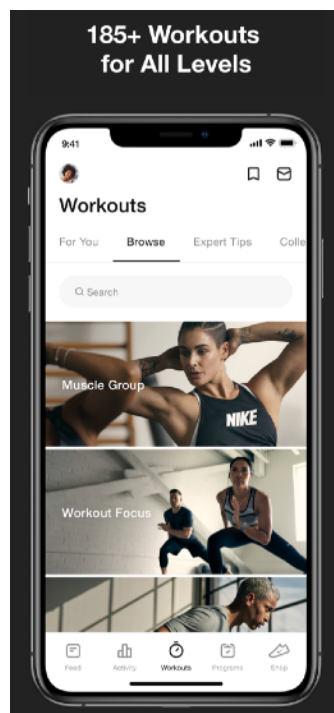
Get a fresh start to 2021 with a dedicated consult room to improve your organization and efficiency on consults. See page 4 for details.

### New Year Healthy MD

Make self care a priority for 2021! Beat COVID depression and burn out with exercise.

#### Nike Training Club

A handy free app that is suitable for all work out levels and used by OHIG members who have found it useful to get in shape!



#### *Case Comments:*

R/o papilledema requests can be a common consult for ophthalmology - often involving scenarios pertaining to headache, nausea/vomiting, vision loss, intracranial mass, or elevated ICP. No formal guideline exists for how these consults should be managed.

Research in this area could provide evidence based insight about the incidence of positive clinical findings, resultant changes in management, and long-term visual prognosis.

OCT imaging and AI are other exciting areas of development that could potentially provide screening by means of photography.

If interested in pursuing research in this area, please reach out to Maggie or Donna. Thank you!

#### Selected Articles:

[Characteristics and Incidence of Inpatient Ophthalmology Consultations to Screen for Papilledema](#)

[Artificial Intelligence to Detect Papilledema from Ocular Fundus Photographs](#)

[Using OCT as a Surrogate of Measurements of Intracranial Pressure in IIH](#)

#### Case Photo Source:

[Digital Library, Univ of Utah:](#)

### DIY Consult Room Tips

Seeing consults at a hospital with no adjacent eye clinic can be challenging - we are limited in terms of what we can bring to the inpatient bedside. The new year could be a great time to negotiate with your hospital or ER for a dedicated "eye room" that could be fully equipped to provide efficient, high quality care.

Here is a nice example from Maggie showing an eye room set up at her hospital ER. It is well stocked with eye supplies, an exam chair and slit lamp, b-scan ultrasound, and an additional wheeled slit lamp that can be used for hospitalized patients. Added COVID precautions include a mounted shield for the SLE.

The room is shared with ENT and is securely maintained via badge access.





**Suggested Consult Room Supplies**

Plastic clear eye shields  
Plastic and Cloth Tape  
Bandage CTL's  
Contact Lens Cases  
Contact Lens Plungers  
Sterile Saline Flushes  
pH paper  
4x4's  
Tissues  
Long cotton tip applicator  
Calcium alginate swabs  
Bacterial culture swabs  
Viral swabs  
Corneal culture plates  
5% Betadyne  
10% Betadyne swabs  
30 gauge needles  
18 gauge needles  
TB syringes  
Fluorescein strips  
Tonopen tip covers  
Alcohol swabs  
Goniosol  
Ultrasound gel  
6-0 vicryl  
6-0 plain gut  
6-0 silk or nylon  
Sanitizing wipes or UV light box  
Small adhesive eye drape  
(for bedside lid lac repairs)

**Suggested Consult Room Instruments**

Tonopen  
Gonio lens  
Westcott scissors  
Bishop Harmon or Adson forceps  
0.12 forceps  
Jeweler forceps  
Golf club spud  
Needle drivers  
Desmarres retractors  
Clamps  
Adult and pediatric specula  
Punctal dilator  
Punctal probes  
Corneal burr  
Portable cautery unit

If you lack access to instrument sterilization, Katena has a variety of disposable single use sterile instruments: [click here](#)

We have no financial disclosures for these products.

**ER Pyxis Meds**

Proparacaine  
Fluress  
Cyclomydril  
Cyclopentolate  
Tropicamide  
Phenylephrine  
Timolol  
Dorzalamide  
Brimonidine  
Latanoprost  
Cosopt  
Diamox 250 mg tabs