

OPHTHALMIC HOSPITALIST INTEREST GROUP NEWSLETTER

Donna Kim, MD | Maggie Hymowitz, MD

Happy Birthday OHIG!

OHIG is officially **1 year old**! It now has over 70 members with both national and international representation. We are thankful to have such an experienced group of providers who share an interest in consult based care.

Fungemia Survey Results

Thank you for submitting your survey responses! A variety of approaches were recommended. See page 4 for details.

Welcome New Members!

Please visit the [OHIG website](#) to verify your information is correct.

Hospitalist Research

Does your clinical practice largely consist of hospital based consults? We are conducting academic hospitalist surveys and warmly invite your participation. Email [Maggie](#) or [Donna](#) if interested.



Image Source: Medicmindtech

Articles

[Telemedicine in Ophthalmology in View of the Emerging COVID-19 Outbreak, GA for Clinical and Experimental Ophthalmology, April 2020](#)

A review of recent advances in teleophthalmology for screening and managing ocular conditions during the COVID pandemic.

[Assessing the Demand for Teleophthalmology in Florida Emergency Departments, Telemedicine and E-Health, Dec 2020](#)

An interesting study using telephone surveys for ER physicians and nurses regarding perceived ophthalmologist availability, equipment availability, and utility of teleophthalmology services.

[Advances in Telemedicine in Ophthalmology, Seminars in Ophthalmology, July 2020](#)

A review of teleophthalmology in the US in terms of its screening potential, advances in AI, improved visual outcomes, and implementation hurdles.



PEARLS

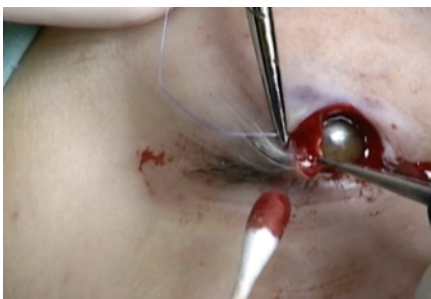
Lateral Canthotomy/Cantholysis Instructional Video



Need a helpful refresher on this emergent procedure for consult patients?

The University of Iowa created an excellent video that can be helpful for practicing providers and residents. [Click here](#)

Eyelid Laceration Repair Instructional Video



Here is another helpful refresher video from The University of Iowa featuring full thickness lid laceration repairs which can be done at bedside. [Click here](#)

CONSULT ROUNDS

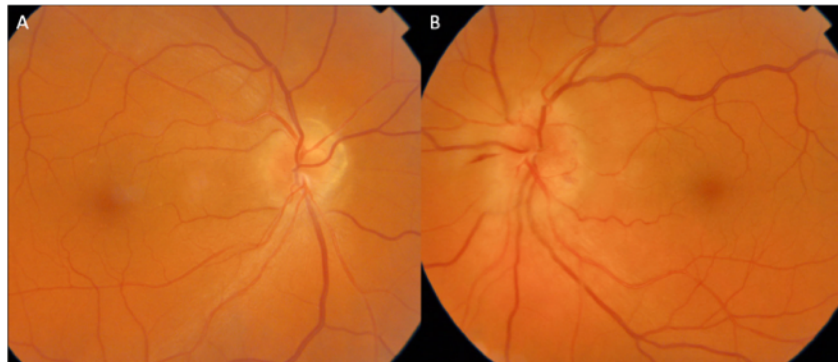


Figure 1: ED fundus photographs of the (A) right and (B) left eye.

An ophthalmology resident receives an ER consult for a 60 year old male with a history of hyperlipidemia who reports new vision loss in the left eye. He tells you that he has had lumbar punctures in the past as a child for reported “tunnel vision”.

On examination, he is 20/20 OD 20/40 OS with a left APD. Dilated exam of the right eye is notable for mild optic disc margin elevation. The left eye is notable for 360 degrees of optic disc elevation with disc heme and engorged retinal veins.

MRI and MRV imaging of the head is obtained and negative for radiographic signs of elevated intracranial hypertension, venous sinus thrombosis, or other pathology.

Subsequent OCT imaging is performed in the ER and shows findings consistent with bilateral optic disc drusen.

The case and imaging are reviewed with the neuro-ophthalmology attending who confirms a diagnosis of non-arteritic ischemic optic neuropathy (NAION) in the setting of bilateral optic disc drusen.

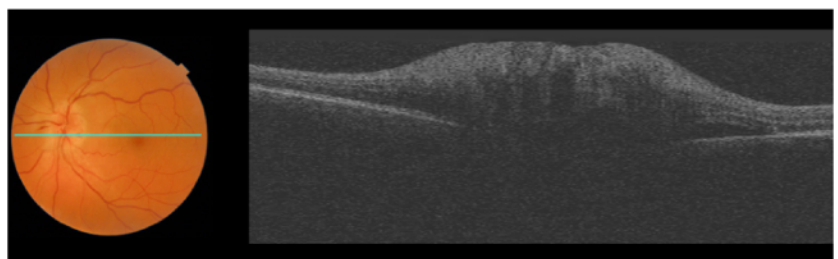


Figure 2: ED OCT demonstrating disc swelling with possible drusen.

Case Comments:

This case features a wonderful example of how telemedicine in the ER can help provide a high level of patient care and potentially avoid unnecessary procedures such as a lumbar puncture.

We greatly appreciate members from the Wilmer Eye Institute for sharing their expertise and set up for teleophthalmology within their ER. Special thanks to Dr. Bo Wang (Wilmer Ophthalmology Resident), Dr. Michael Fliotsos (Wilmer Research Fellow), Dr. Fasika Woreta (Wilmer Faculty and Residency Program Director).



Teleophthalmology Survey

Question 1

Do you use teleophthalmology for hospital based consults?

- A) We use teleophthalmology in our ER
- B) We use teleophthalmology for inpatient consults
- C) We use teleophthalmology for both ER and inpatient consults
- D) We do not have teleophthalmology set up for hospital based consults

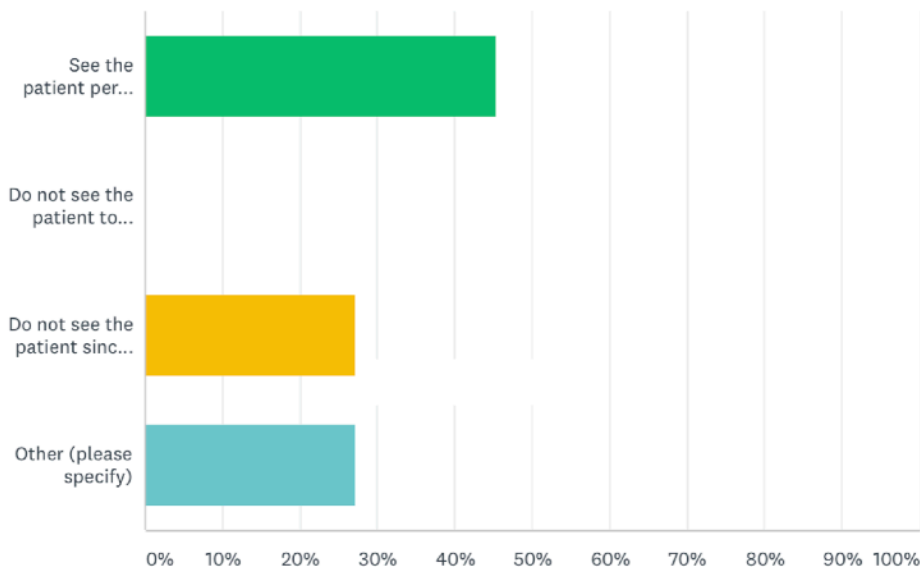
Question 2

If you use teleophthalmology for ER or inpatient consults, please describe your current set up.

[Click here](#) to share your responses on Survey Monkey.

Fungemia Survey Results

How Would You Manage This Fungemia Consult Request?



ANSWER CHOICES	RESPONSES
▼ See the patient per usual protocol	45.45%
▼ Do not see the patient to reduce unnecessary exposures	0.00%
▼ Do not see the patient since they are already on systemic therapy and unlikely to need an injection	27.27%
▼ Other (please specify)	Responses 27.27%

Showing 3 responses

- ☐ ask the nurse to administer dilating drops & do an exam limited to funduscopy (history can be taken over the phone to reduce exposure)

2/12/2021 8:19 AM
 [View respondent's answers](#)
[Add tags](#)
-
- ☐ discuss with referring doc, recommend exam if symptoms

2/3/2021 12:24 PM
 [View respondent's answers](#)
[Add tags](#)
-
- ☐ Our current policy is not to see the patient, independent of COVID. We defer screening exams in awake, alert, and asymptomatic adults.

2/1/2021 9:50 AM
 [View respondent's answers](#)
[Add tags](#)
-