

# OPHTHALMIC HOSPITALIST INTEREST GROUP

## NEWSLETTER

Donna Kim, MD | Jennifer Yu, MD

### Announcements

#### Join the Community!

Have a question or topic about inpatient/ER consults? Share on the [AAO/OHIG community](#)! Log in with your AAO username

#### OHIG Topic Wishlist

Have a case you would like to feature in an OHIG newsletter? We welcome your ideas and expertise. Email [ohig@ohig.org](mailto:ohig@ohig.org).

#### OHIG Zoom Meetings

Save the date for our new virtual OHIG Zoom gatherings in 2026!

**Jan 21, April 22, and Aug 19**

5:00pm PST/7:00pm CDT/  
8:00pm EST. Registration to come!

#### OHIG Website Resource Center

Check out newsletters, job postings, and consult resources on the [OHIG website](#).



### Articles

#### [AAO Clinical Statement on Inpatient Consultations for Ophthalmology 2025](#)

Newly revised clinical statement on Inpatient Consultations from the AAO Secretary of Quality Care, co-authored by Donna Kim.

#### [A Call to Action and Roadmap for Improving Emergency Treatment of Ophthalmic trauma in the United States, Ophthalmology, 2025](#)

Collaborative statement from a joint task force involving the AAO, ABO, AUPO, ASOPPS, ASOT, and SMO advocating for national coordination of ocular trauma care.

#### [Assessing the Efficacy of Ophthalmic Transfers to an Academic Level 1 Trauma Hospital: Diagnostic Accuracy and Intervention Rates, Ophthalmology, 2025](#)

Newly published article characterizing ophthalmology hospital transfers at University of Washington which reported 685 transfers in a single year alone. How does this data compare with transfers at your institution?

## PEARLS



### Portable Visual Field Devices



A variety of brands offer portable lightweight headsets for visual field testing. Very handy for ER/inpatients with optic neuritis, IIH, NSG pre-op evals, functional overlay, and more. Some companies offer lease payments as low as \$225/month.

Topcon Inspire  
Olleyes Virtual Visual Field

### Disposable or Re-usable Indirect Lenses



Volk offers single use lenses sold as a box of 10 for \$228. These lenses provide excellent image quality and are a great back up for lost lenses on consults or for patients who are on contact precautions.

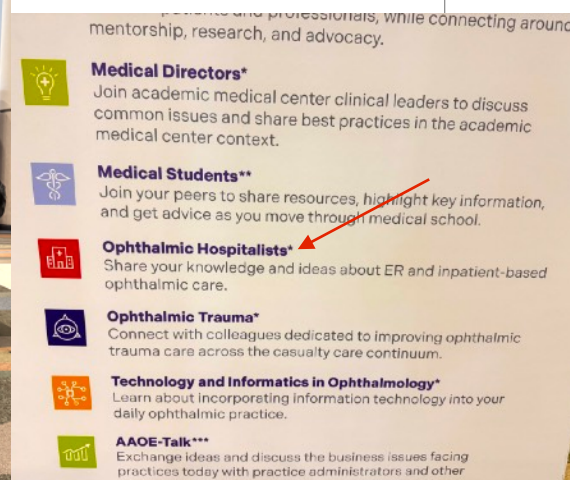
Volk Lenses

## CONSULT ROUNDS



It was so wonderful to see so many of you at the AAO meeting! Thank you for sharing your consult updates and ideas. Here is a brief summary of our OHIG Round Table Discussion highlights.

### 1) Consult Visibility at Future AAO Meetings



Many of you advocated for increased visibility for inpatient/ED topics at AAO meetings. As hospital-based consults continue to develop into its own unique niche within ophthalmology, we hope to add new search terminology for the AAO program to include “inpatient consults”, “emergency room”, and “ophthalmic hospitalists”.

## Handheld Fundus Cameras

Here are a few handheld portable fundus cameras with positive reviews from OHIG members.



Optomed Aurora IQ



Remidio



Phelcom Eyer2

There is also interest in developing discussion panels for OHIG symposiums/courses at future AAO meetings. Do you have an interesting idea you'd like to present at the next annual meeting? Be on the look out for the AAO 2026 Abstract Submitter which will open December of 2025.

## 2) ED Imaging (Fundus Photography and OCT)

ED imaging and tele-consultation are hot topics on consults. With declining on-call coverage, many academic institutions are seeing a notable rise in ophthalmology consult volume (see featured article #3 in this OHIG newsletters).

Several institutions (Emory University, University of Utah, University of Washington, Oregon Health and Science University, Mayo Clinic, and more) are currently using or in process of setting up ED imaging to assist with patient triage and management. Papilledema and CRAO protocols have been developed.

Dr. Valerie Biousse from **Emory University** has published several articles on this topic and is spear heading efforts to disseminate information at multiple institutions across the US. ED buy in and digital connections for EHR and image databases are key hurdles.

Featured Article: Breaking the Barriers - Methodology of Implementation of a Non-Mydriatic Ocular Fundus Camera in an ED, Survey of Ophthalmology, 2025.



Topcon Maestro

Topcon Maestro 2 has become a popular device for ED consults as it combines fundus photography and OCT into a single machine. Minimal training needed for ED staff.

### 3) Consult Job Openings



Dr. James Brandt from **UC Davis** shared information about their available ophthalmic hospitalist position based at UC Davis Medical Center in Sacramento California. Responsibilities include staffing inpatient/ED consults and developing a clinical curriculum for hospital-based ophthalmology. The department is very supportive of fostering this role. Position salary ranges \$315,000-\$370,000 annually. They welcome new applicants.

[UC Davis Recruitment Website](#)

Dr. Jacquelyn O'Banion from **Emory University** shared an available position at Emory University. They are looking for a full time comprehensive ophthalmologist to assist with hospital/ED consults, staffing residents in clinic/OR, and have a personal clinic. Candidates are ideally committed to health equity and education. Cornea and glaucoma training would be desired as well.

[Emory Recruitment Website](#)

### 4) Ophthalmic Hospitalist Fellowship



Dr. Deepta Ghate from **Emory University** shared their pioneer efforts to develop one of the first formal ophthalmic hospitalist fellowships here in the US. The fellowship is supported by the hospital who is offering dedicated FTE coverage for adult comprehensive ophthalmology, adult neuro-ophthalmology, and pediatric consults. They have recruited a new fellow from Canada who will begin this fellowship shortly. Congratulations!



## 5) New OHIG Zoom Meetings in 2026

As always, our time at AAO runs short and there are so many interesting topics left to discuss with fellow OHIG members. Many of you have expressed a desire to have more regular meetings throughout the year to talk about important issues for hospital-based consults.

To help facilitate this interest, we are scheduling new OHIG Zoom Gatherings during 2026! Future topics for discussion include ED imaging Q&A (what has worked and what has not), curbside consults (how do you manage, do you document or bill?), institutional consult protocols (candidemia, orbital fractures, flashes and floaters, can we share so we don't have to re-invent the wheel at our institution) and more!. We welcome new questions or ideas to meet in this casual virtual format.

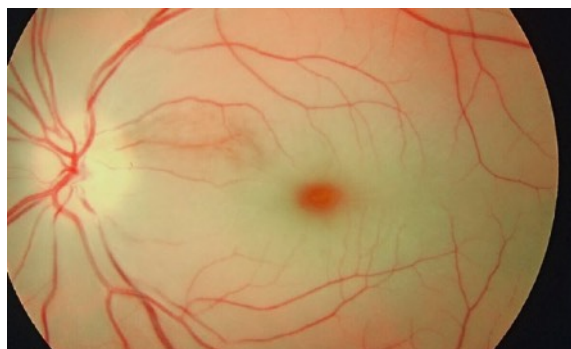
Please save the date for these upcoming OHIG Zoom Meetings in 2026:

- **Jan 21, April 22, and Aug 19**
- 5:00pm PST/7:00pm CDT/8:00pm EST
- Registration to come!

## 6) Updates on TPA and CRAO

Dr. Joanne Shen from **Mayo Clinic** in Arizona shared new data on TPA for CRAO. We are often urgently consulted to rule out CRAO in the ED per stroke protocol (wouldn't it be nice if you had an ED OCT).

Results of **Ten-CRAOS** (Tenecteplase in Central Retinal Artery Occlusion Study) were presented at the European Stroke Organization Conference on May 2025. The trial assessed the effects of tenecteplase vs ASA in patients with confirmed CRAO presenting within 4.5 hours. Overall, results showed no improvement in vision in the tenecteplase group who had more adverse events including one patient who died from severe intracerebral hemorrhage.



Another randomized controlled study **THEIA** (IV Alteplase vs Oral Aspirin for Acute CRAO) showed similar results. IV alteplase administered within 4.5 hours of CRAO onset was not associated with a significant improvement in visual acuity compared with aspirin.

### Articles

- 1) <https://www.ahajournals.org/doi/10.1161/blog.20250910.688942/full/>
- 2) [https://www.thelancet.com/journals/laneur/article/PIIS1474-4422\(25\)00308-4/fulltext?rss=yes](https://www.thelancet.com/journals/laneur/article/PIIS1474-4422(25)00308-4/fulltext?rss=yes)

**Survey Question:**

Question: Given these new data findings about TPA and CRAO, are you noticing a change in ED triage or stroke protocols for urgent ophthalmology consult requests for patients with suspected CRAO?

- A) Yes
- B) No
- C) Other: please comment

Please share your responses/questions on the AAO/OHIG community page: <https://aao.mobilize.io/main/groups/47315/lounge>

**7) OHIG Leadership Transitions**

We have a few announcements regarding leadership transitions for OHIG. As many of you know, OHIG was founded in 2020 by Donna Kim and Maggie Hymowitz who both share a passion for improving resources and community for hospital-based ophthalmology consultation.



**Maggie Hymowitz** has an extensive >10 year experience working as an ophthalmic hospitalist managing busy consult services at Harvard University's Massachusetts Eye and Ear (MEE) and Northwell Health. She has since transitioned her work to become Director of Global Patient Safety at Regeneron. We wish to sincerely thank Dr. Maggie Hymowitz for her invaluable insight, vision, and expertise for OHIG.



We would like to also announce that **Jen Yu**, MD, PhD will be taking on a new Co-Director role at OHIG. She is Professor of Clinical Practice at University of Washington where she is Director of Ophthalmology Trauma and Consult Services at Harborview Medical Center. She is also on the Board of Directors for American Society of Ocular Trauma (ASOT) as Policy Chair. We are grateful and excited to have Dr. Jen Yu contribute her experience and expertise to OHIG in her new leadership role with **Donna Kim** who will continue as Co-Director. Welcome Jen!

*Thank you to all our OHIG members for all your continued support and shared expertise! We look forward to seeing you at the next AAO meeting in New Orleans 2026!*

*- Donna, Maggie, and Jen*

