

## SPIG GUARDRAIL END TERMINAL (SGET) 44" w/offset braker bars

**SPIG Industry, LLC**

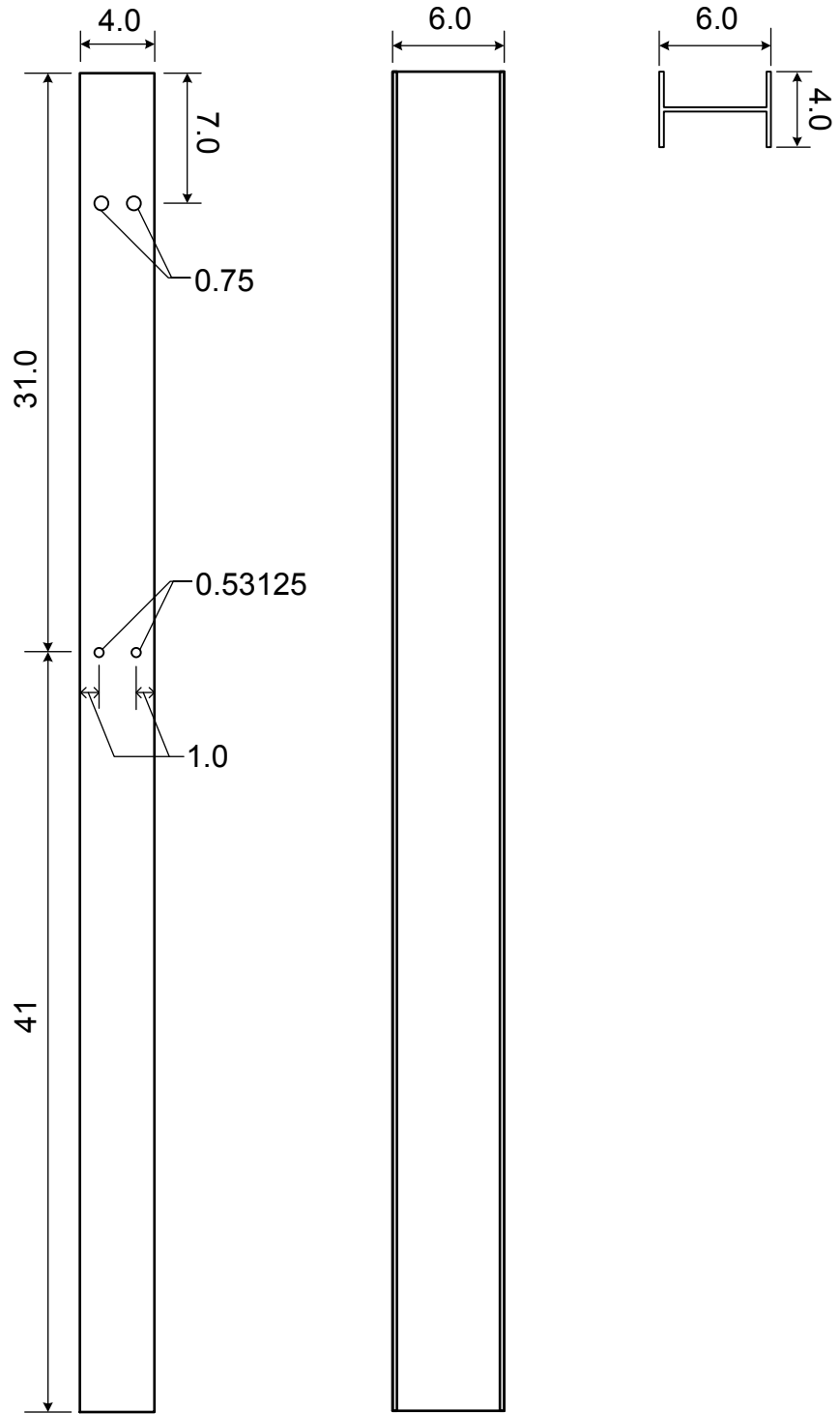
PO Box 2617

Abingdon, VA 24212

SHEET NO.

DATE:

12/19/17



YIELDING POST (W6 X 8.5)

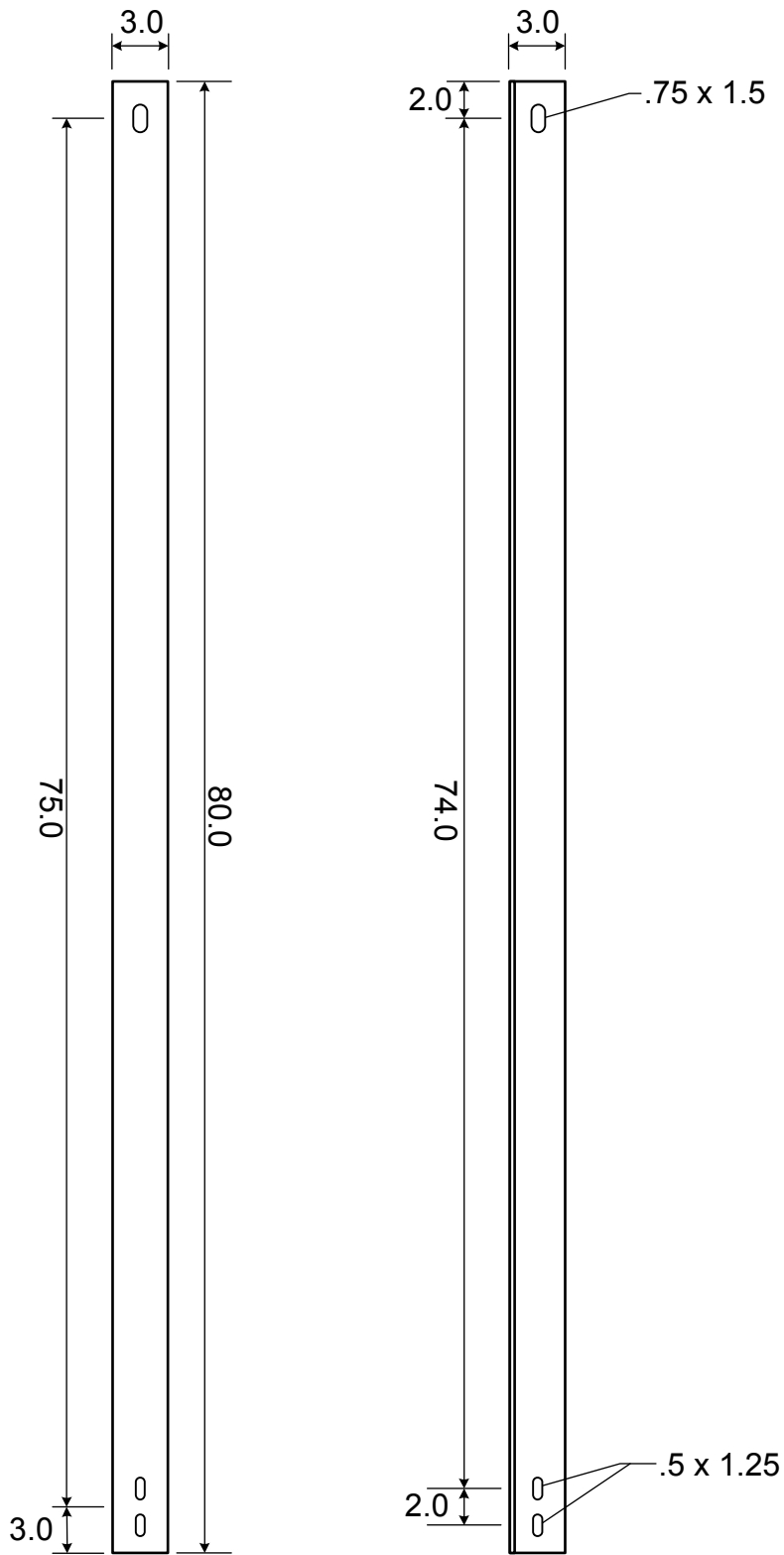
**SPIG Industry, LLC**

PO Box 2617  
Abingdon, VA 24212

SHEET NO.

DATE:

12/19/2017



STRUT CHANNEL FROM 1/4" A36 3" X 3" Angle

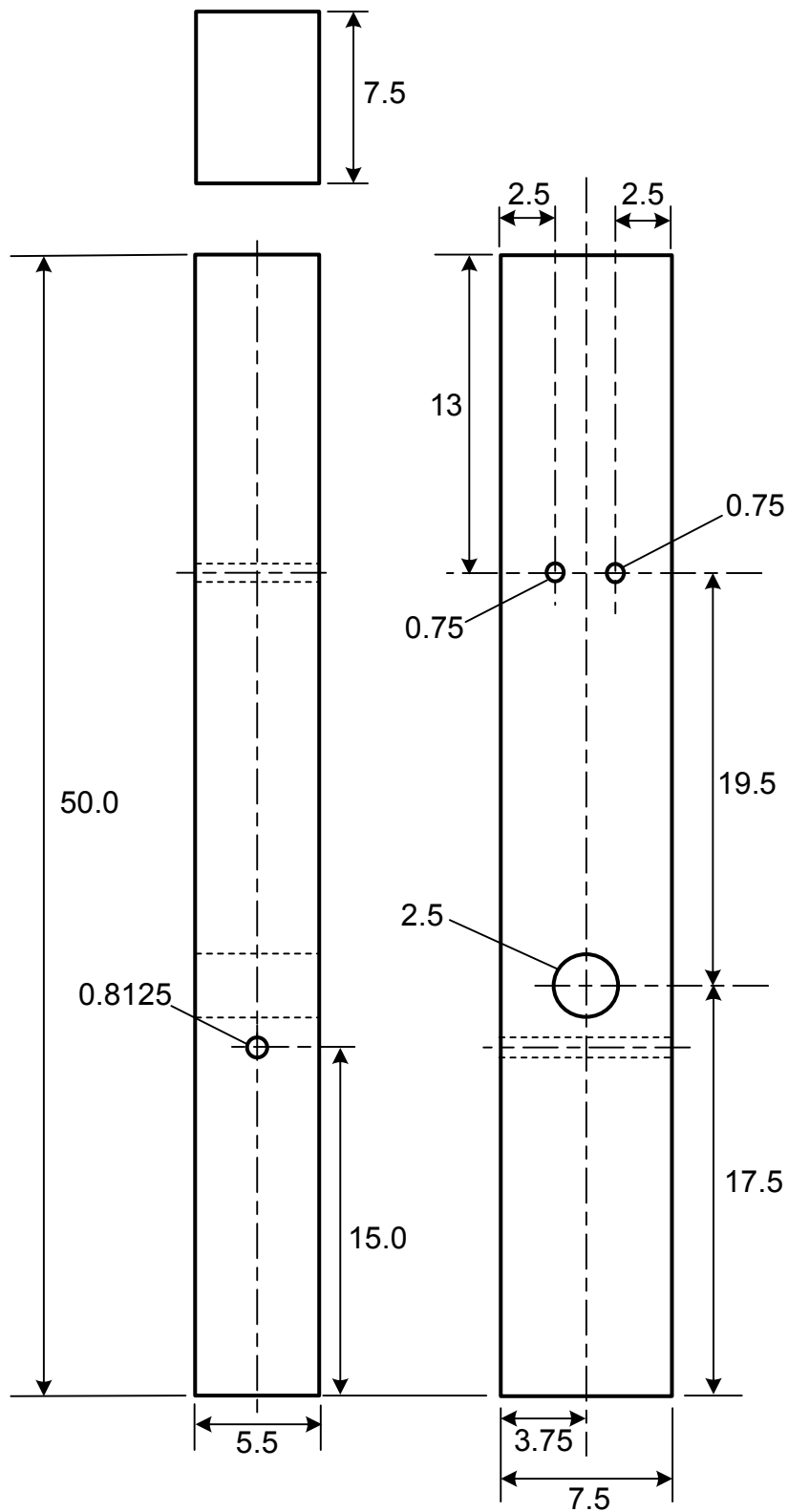
**SPIG Industry, LLC**

PO Box 2617  
Abingdon, VA 24212

SHEET NO.

DATE:

2/28/18



WOOD POST 1

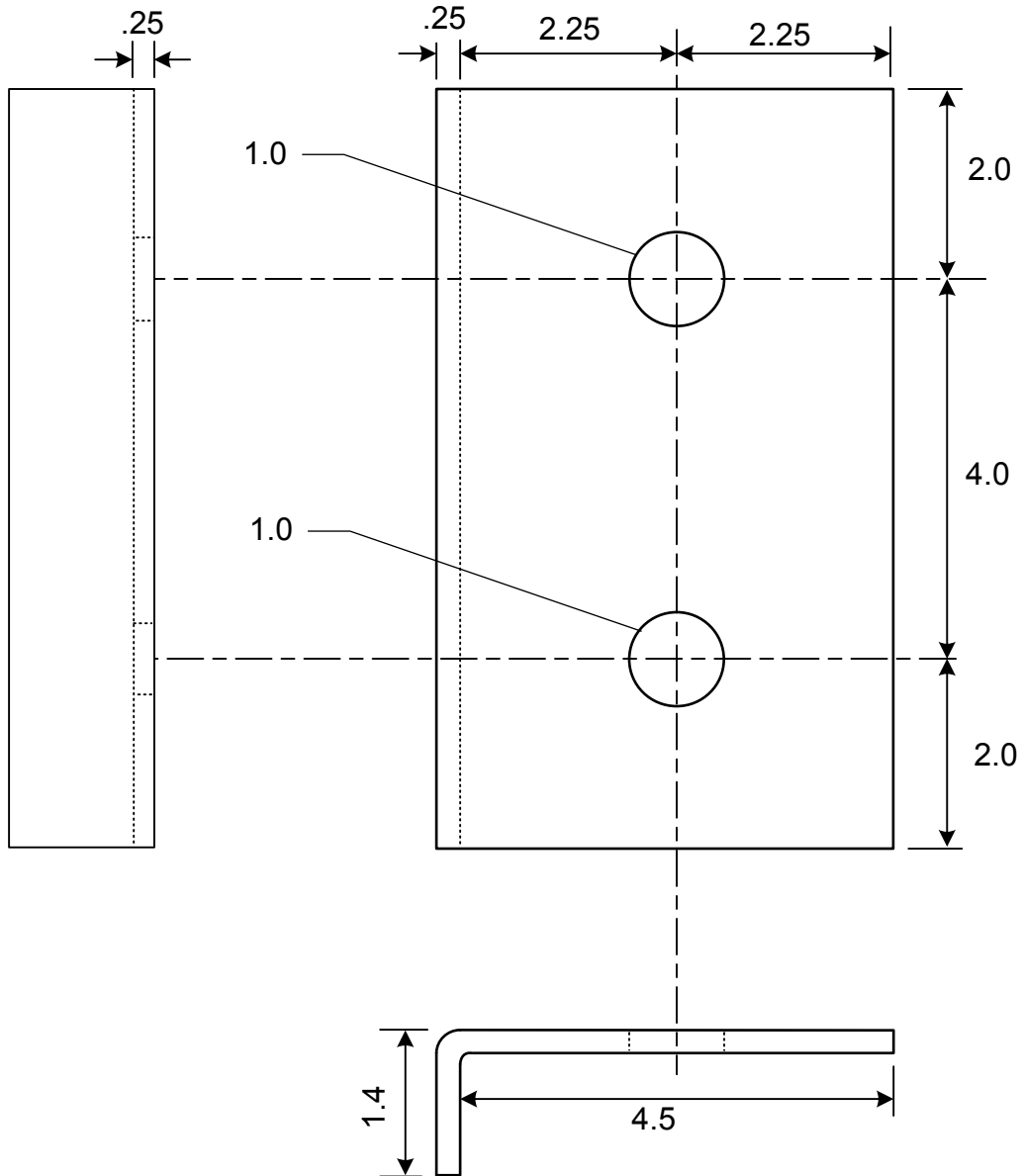
**SPIG Industry, LLC**

PO Box 2617  
Abingdon, VA 24212

SHEET NO.

DATE:

12/19/17



STRIKE PLATE FROM 1/4" A36 PLATE STEEL

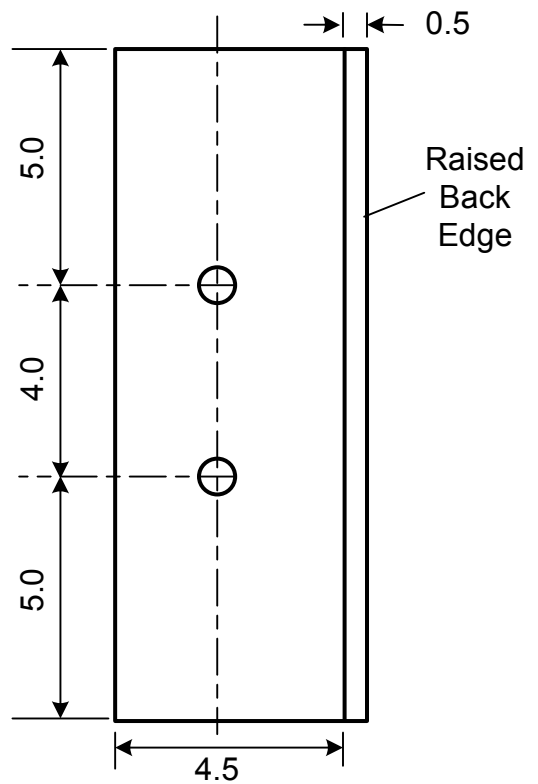
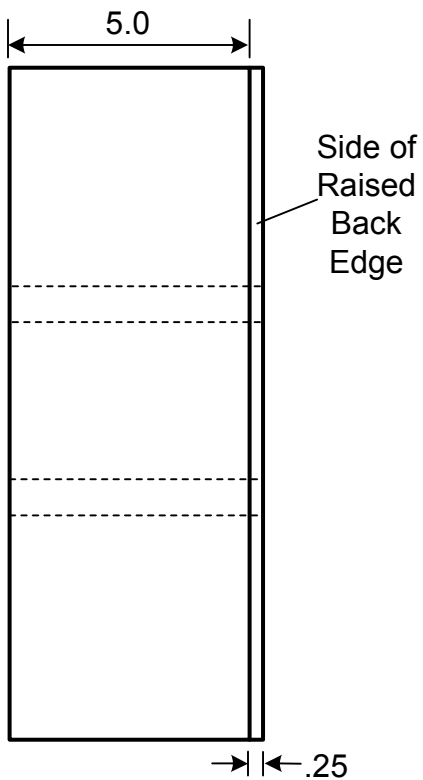
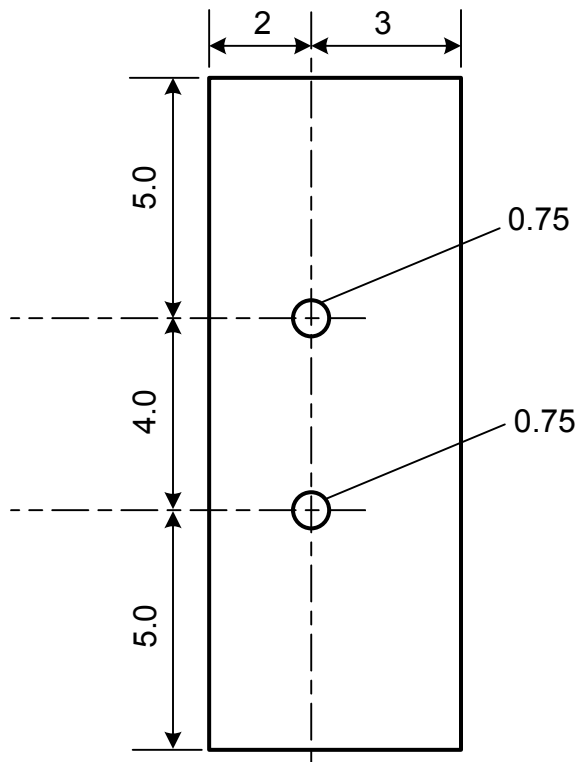
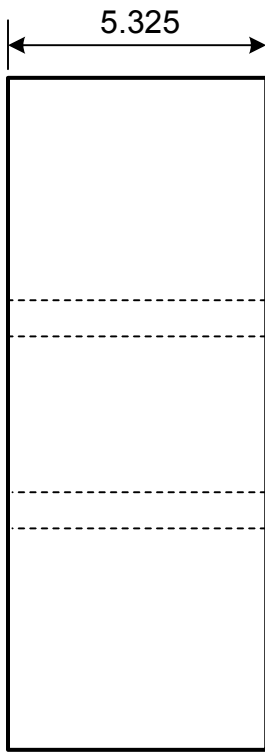
**SPIG Industry, LLC**

PO Box 2617  
Abingdon, VA 24212

SHEET NO.

DATE:

12/19/17



**STRIKE BLOCK ON WOOD POST 1**

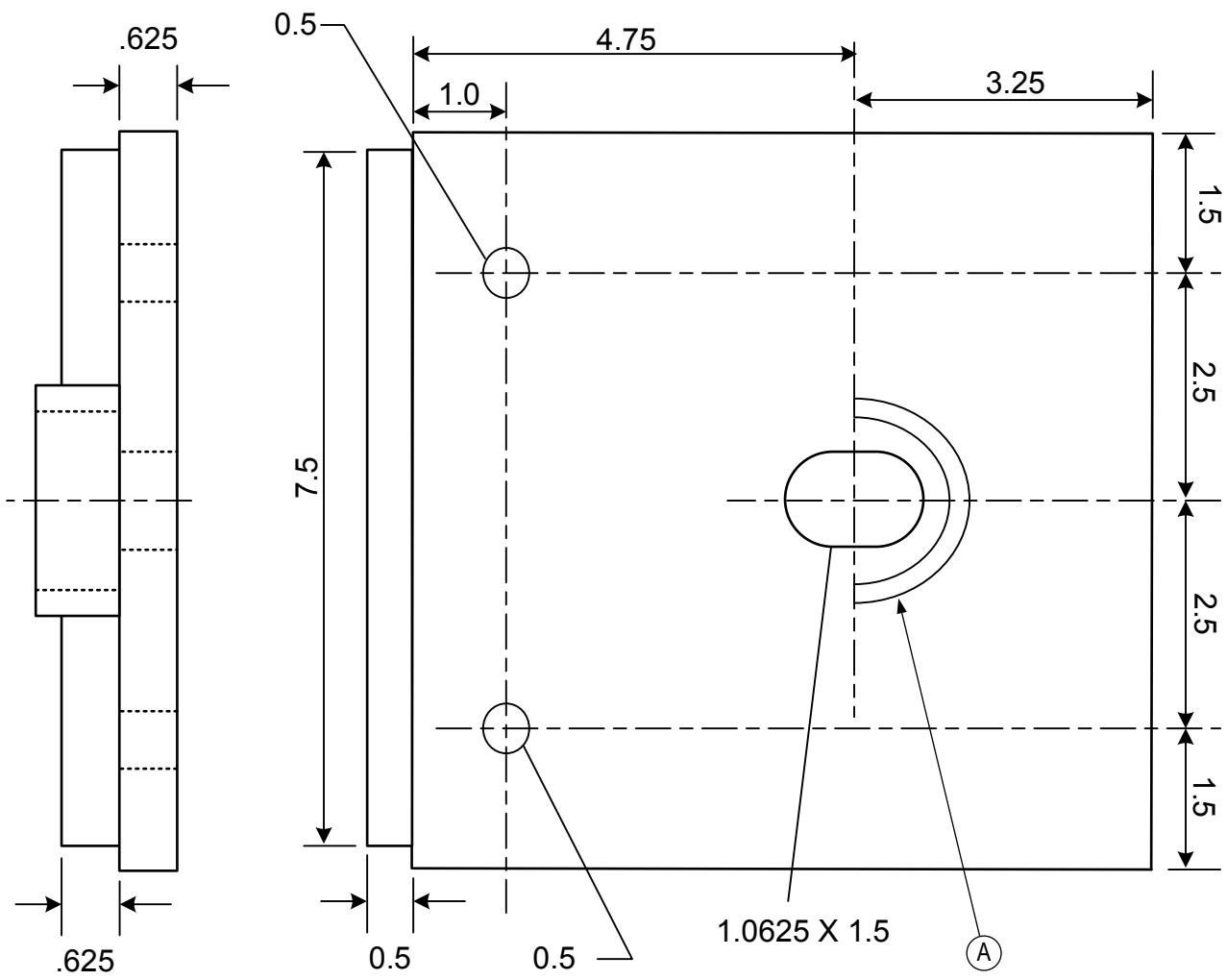
**SPIG Industry, LLC**

PO Box 2617  
Abingdon, VA 24212

SHEET NO.

DATE:

12/19/17



| PART | DESCRIPTION  |
|------|--|
| A    | HALF DIAMETER OF 2.375 OD X 2.0 ID X 0.1875 WALL A36 PIPE  |
| B    | 0.5 [13] A36 PLATE STEEL MEASURING 1.25 [32] X 7.5 [191]   |
| C    | 0.625 [16] A36 PLATE STEEL MEASURING 8.0 [203] X 8.0 [203] |

## BEARING PLATE

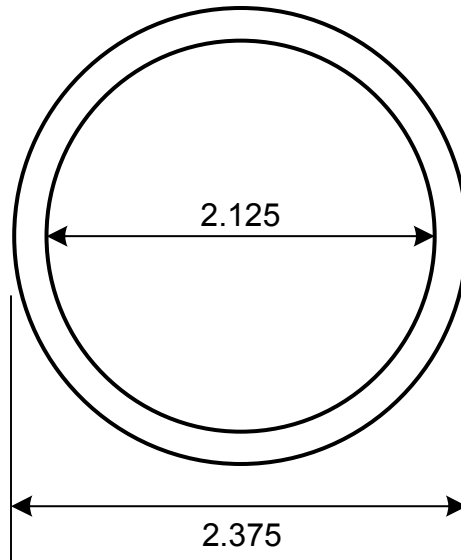
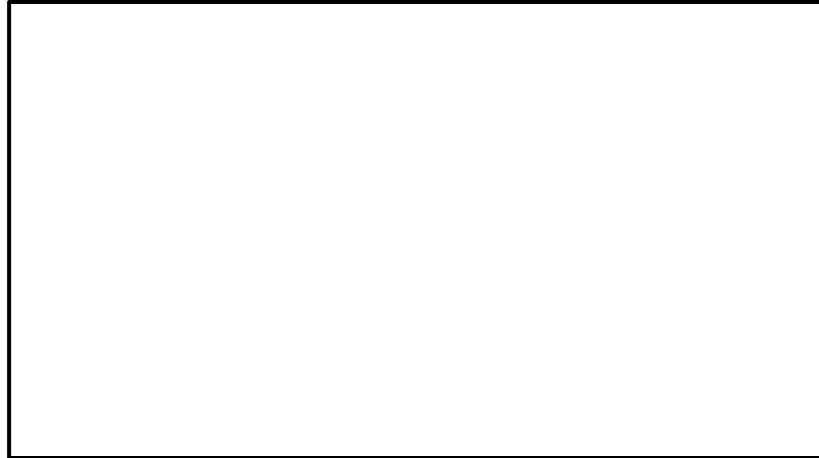
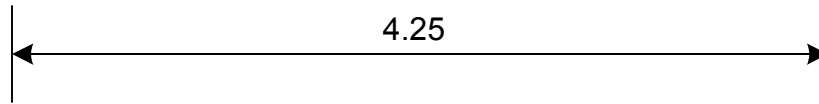
**SPIG Industry, LLC**

PO Box 2617  
Abingdon, VA 24212

SHEET NO.

DATE:

12/19/17



PIPE SLEEVE FROM A36 TUBE Steel

**SPIG Industry, LLC**

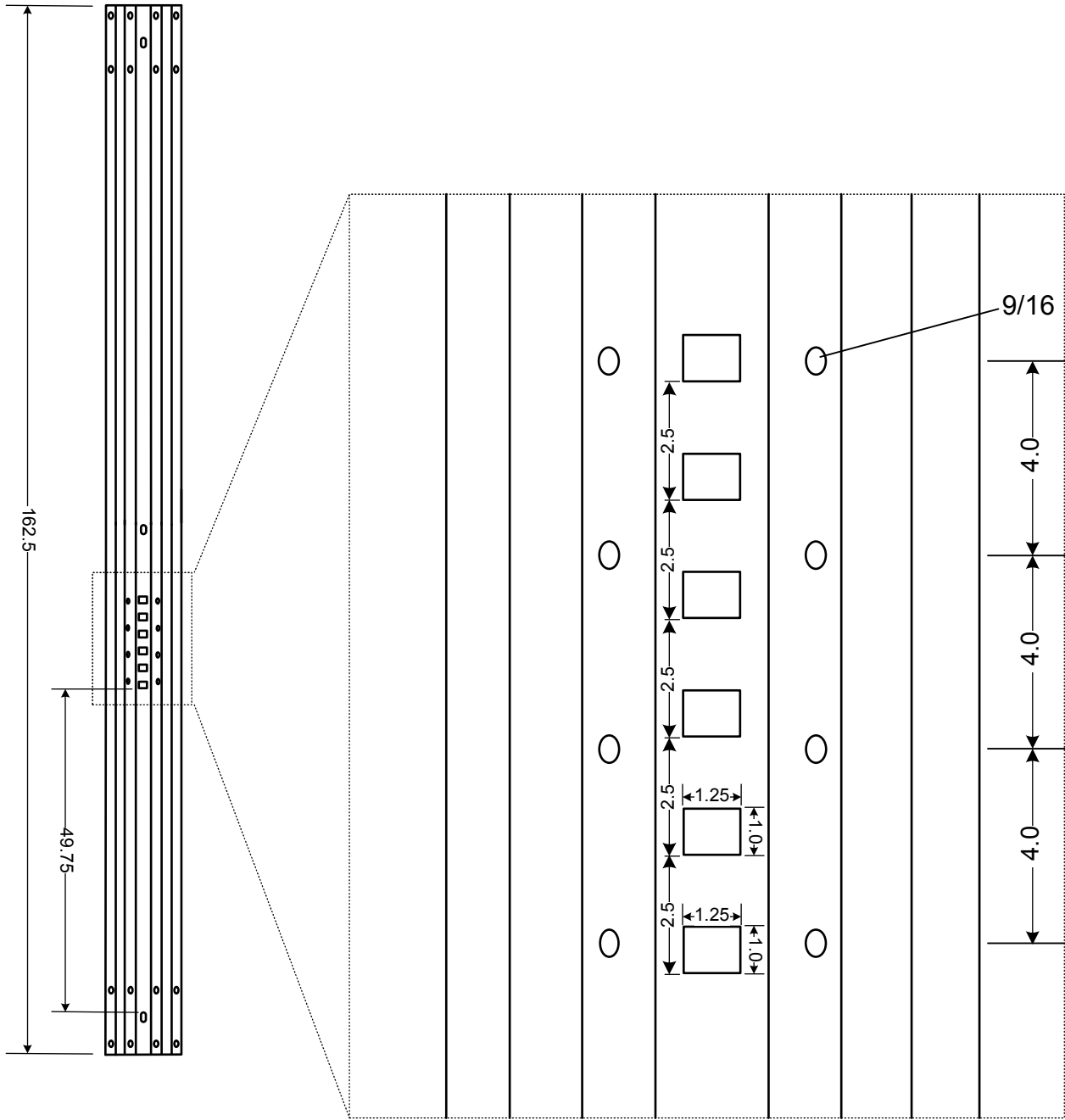
PO Box 2617  
Abingdon, VA 24212

SHEET NO.

DATE:

8/25/17





FIRST GUARDRAIL PANEL (Modified 12' 6" M180)

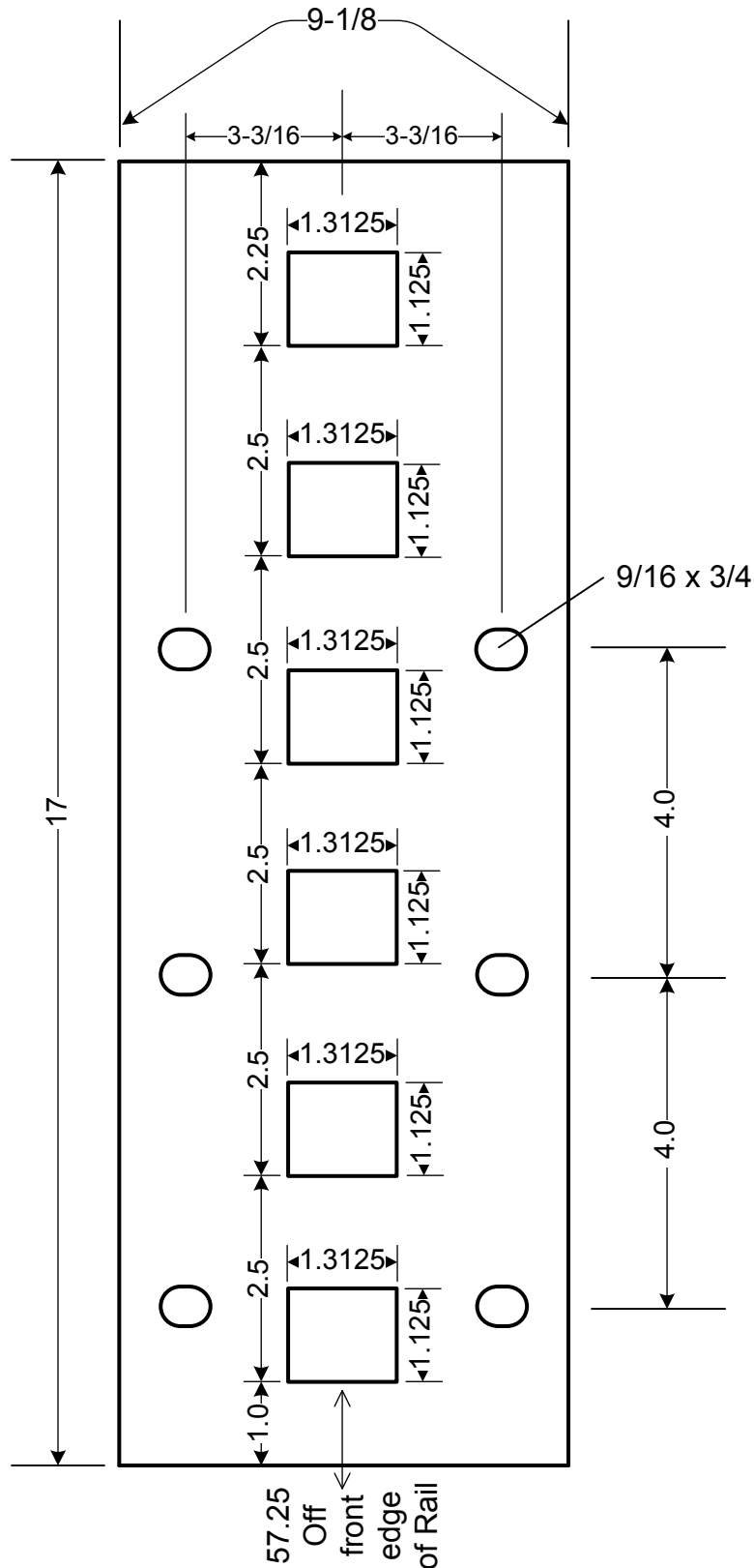
**SPIG Industry, LLC**

PO Box 2617  
Abingdon, VA 24212

SHEET NO.

DATE:

1/26/18



REINFORCEMENT PLATE (Plan View of Bent 12 Gauge GR55 Plate)

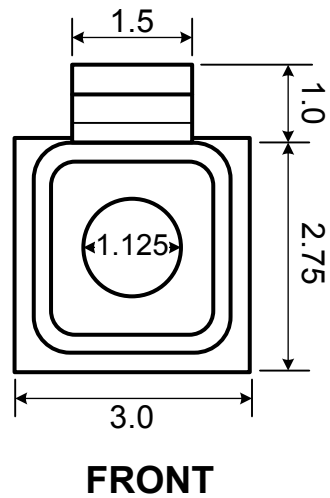
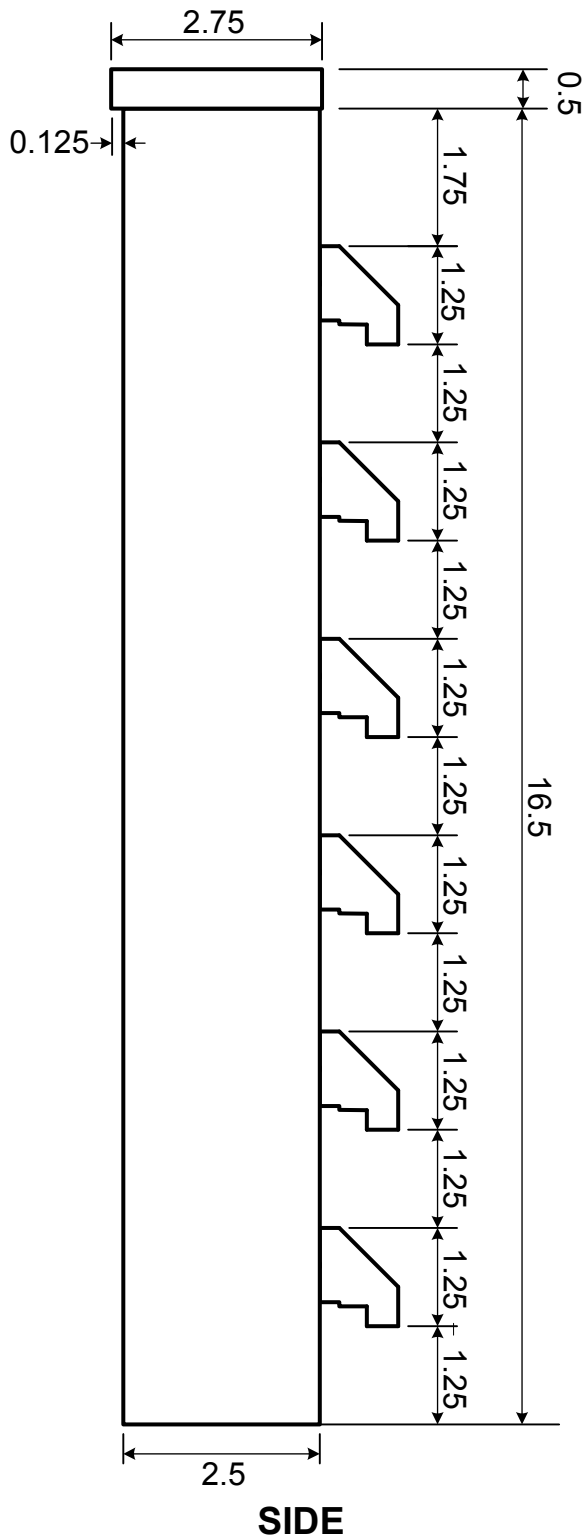
**SPIG Industry, LLC**

PO Box 2617  
Abingdon, VA 24212

SHEET NO.

DATE:

1/26/18



GUARDRAIL GRABBER FROM 2.5" X 2.5" X 1/4" A36 SQUARE TUBE

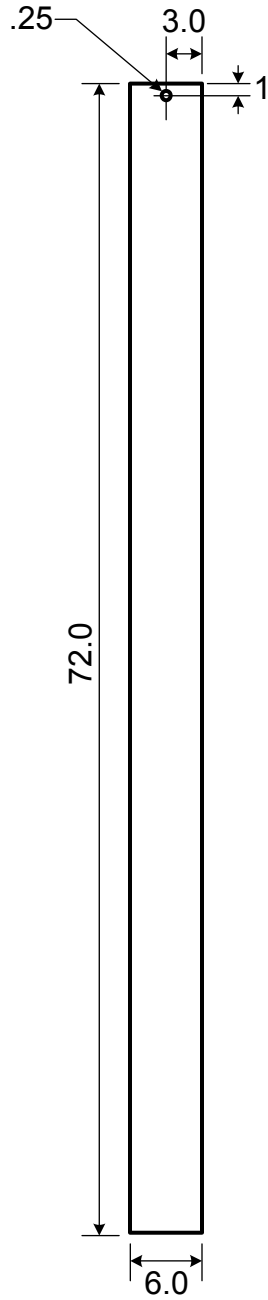
**SPIG Industry, LLC**

PO Box 2617  
Abingdon, VA 24212

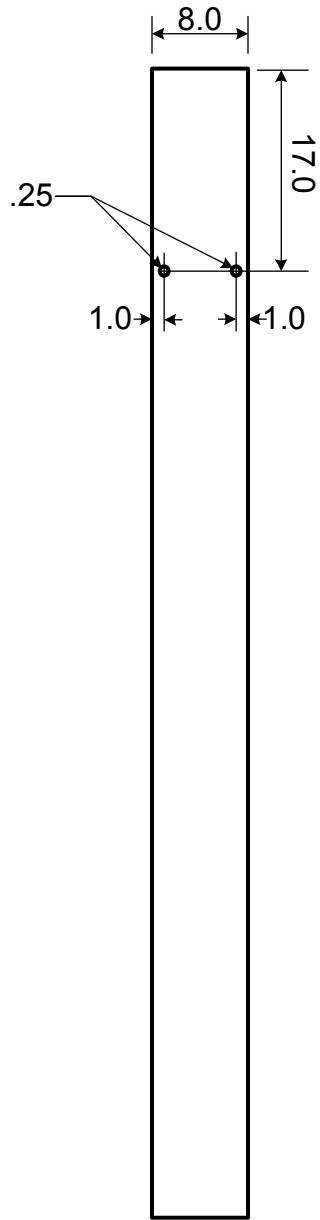
SHEET NO.

DATE:

4/05/17



**SIDE**



**FRONT**

FOUNDATION TUBE FROM A36 8" X 6" X .1875" RECTANGULAR TUBE

**SPIG Industry, LLC**

PO Box 2617  
Abingdon, VA 24212

SHEET NO.

DATE:

4/05/17