



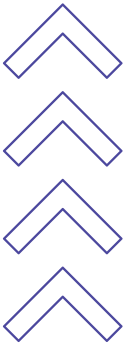
Between Two Homes
Direct Services



INNOVATING PARENTING

FACILITATION:

**A Collaborative, Educational, Team Model
Advanced Training for Attorneys &
Mental Health Professionals**



**Bradley Craig,
LMSW-IPR, CFLE**

Explore a powerful, education-based team model for Parenting Facilitation—designed to improve outcomes and streamline high-conflict cases. This training includes real-world examples and step-by-step guidance on how to:

- Build your website & referral pipeline
- Set up consents and documentation
- Screen and accept new clients
- Prepare for intake
- Lead a strong first session
- Coordinate families between sessions
- Deliver effective co-parent education
- Reduce burnout
- ...and so much more.



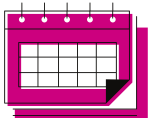
**Cecilia Powers,
LCSW-S**



[Register Here](#)



• \$300 for 6 CEUs
with 3 Ethics CEUs



May 15, 2026
9 A - 4 p



Holiday Inn Express &
Suites Irving
Convention Center -
Las Colinas

