



At QW Kitchen & Bath, we bring spaces to life through custom cabinetry, millwork, and carefully crafted details for both residential and commercial projects in Texas.

In 2025, we completed over 50 projects, combining thoughtful design with high-quality craftsmanship. This portfolio showcases a selection of our work that reflects our expertise, our attention to detail, and the strong partnerships we build with our clients. Every project is designed with intention tailored to the space, the people who use it, and the story it tells. We invite you to explore our work.



# OUR THOUGHTFUL PROCESS

FROM YOUR VISION TO REALITY

Our approach begins with a personal consultation, where we listen closely to our clients' needs and visions. From there, we craft bespoke designs tailored to their spaces. Our process includes collaborative design revisions, material selection, precision production, and expert installation. At every step, we ensure clear communication and attention to detail, delivering a seamless experience from concept to completion.



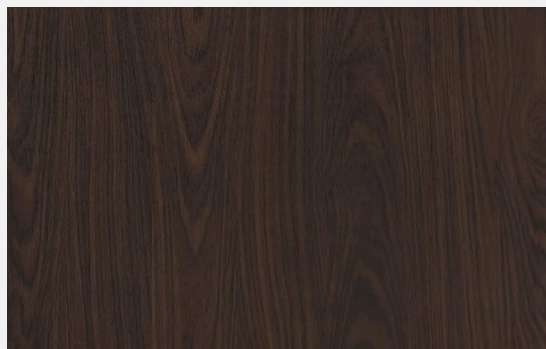
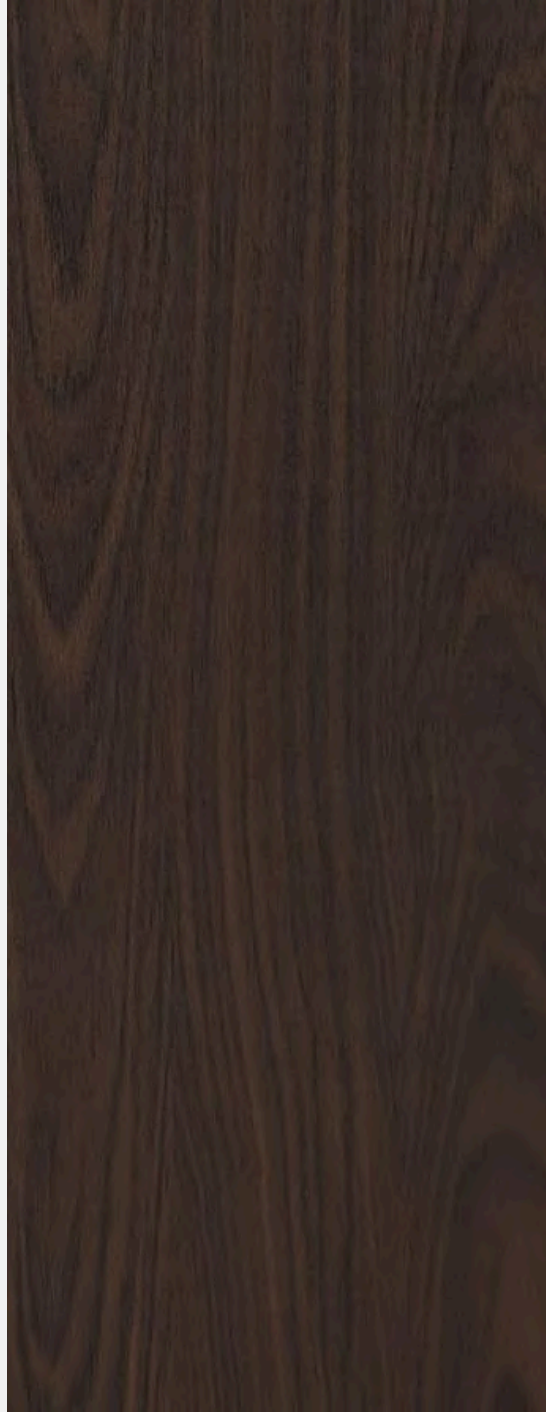
STYLISH & PRACTICAL  
KITCHENS

Turn your kitchen into the true heart of your home with smart layouts, premium materials, and timeless design.

ELEGANT & FUNCTIONAL  
BATHROOMS

Experience a perfect balance of style and comfort. Our bathroom designs combine modern aesthetics with practical solutions.





## RESIDENTIAL WORK

QW KITCHEN & BATH

---

S I E R R A  
L I N E N  
WARM MEDITERRANEAN MODERN



This kitchen combines natural materials with modern design, proving that elegance doesn't have to come with a high price tag. The warm wood cabinetry and terracotta floors create a calming, grounded feel, while the quartz countertops bring a refined touch. Open shelving offers practical and stylish storage, and the black hardware beautifully contrasts with the warm wood tones. The spacious island serves as both a functional workspace and social hub, with lighting that enhances the inviting ambiance. This design demonstrates that beauty and functionality can exist without the need for expensive materials.



# S I E R R A L I N E N

WARM MEDITERRANEAN MODERN



For us, Warm Mediterranean Modern means reinterpreting the warmth of natural materials through a refined and confident design language.

Sierra Linen is a modern reflection of Mediterranean soul, shaped by Texas light.

Every detail was developed through a close and thoughtful collaboration with the homeowner. From material studies to finish selections, we refined each layer to ensure the space felt authentic rather than decorative.

The result is a home that feels grounded, warm, and quietly sophisticated



# S I E R R A L I N E N

WARM MEDITERRANEAN MODERN



## PACE & BALANCE

In this project, our intention was to bring together the timeless character of natural stone and the warmth of wood in a harmonious rhythm.



QW KITCHEN & BATH



Floating shelves with integrated lighting add lightness, while the linear cabinetry grounds the space. Transitions between materials were kept intentionally refined, allowing each detail to support the overall calm strength of the design.

QW  
KITCHEN & BATH  
QW

# THE LIMESTONE ARCH HOUSE

WARM TEXAS MODERN



## DESIGNED WITH CARE

A kitchen created to feel natural, inviting, and truly her own.

QW KITCHEN & BATH





10:23

10:23

# THE LIMESTONE ARCH HOUSE

WARM TEXAS MODERN



## PRESERVING THE SOUL

Rather than redefining the space, our goal was to honor it. The existing stone arches, textured walls, and handcrafted tile remained untouched forming the architectural foundation of the design. Our role was to refine, not replace.

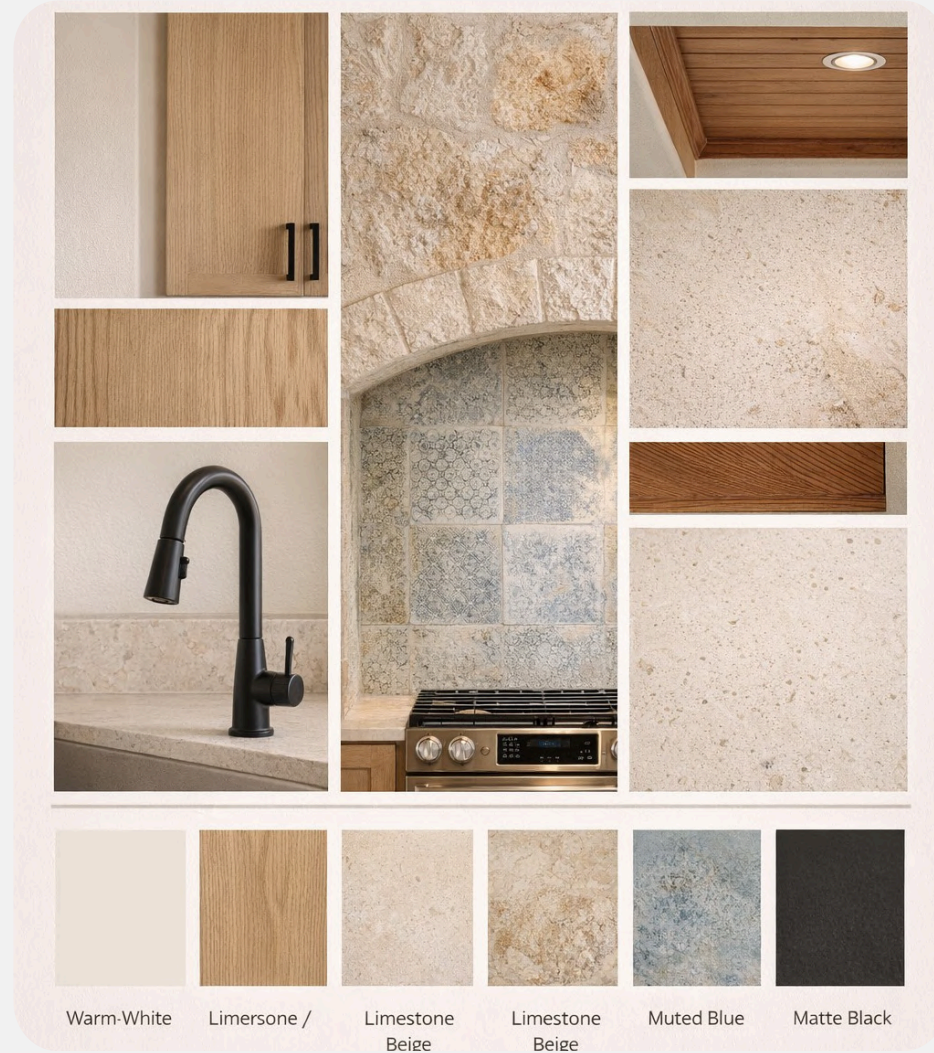


Designed around the homeowner's vision, this kitchen bridges preservation and refinement. The custom island was carefully shaped to echo the warmth and material depth of the original stone structure, while introducing clean, modern lines. Timber-toned cabinetry was selected to complement the existing limestone textures, maintaining the Mediterranean warmth without overpowering the architecture. The sculpted corner detail adds subtle character and craftsmanship, allowing tradition and modernity to coexist in balance.

Every cabinet profile, finish, and proportion was considered to ensure the space feels both renewed and deeply rooted.

# THE LIMESTONE ARCH HOUSE

WARM TEXAS MODERN



The matte blue tiles introduced within the arched niche subtly reference traditional European craftsmanship, adding depth to the space without overpowering it. Matte black handles and fixtures create a modern counterpoint, grounding the warmth of limestone and oak with clarity and precision. The result is a balanced palette of texture, tone, and restraint.

QW KITCHEN & BATH



L I O R A

S A G E

SOFT GREEN TRANSITIONAL



## SERENITY & ELEGANCE

In this small kitchen, we've blended soft green tones with custom details and a thoughtful design approach. The space features a handcrafted custom hood, made in our workshop, along with tailored cabinetry that enhances both style and functionality. Designed to evoke calm, elevated, and intentional living, this project reflects how luxury isn't determined by size but by the experience it offers. This is how we bring affordable luxury to life.

QW KITCHEN & BATH



L I O R A  
S A G E  
SOFT GREEN TRANSITIONAL



T H E  
S A N D S T O N E  
H A V E N  
FAMILY HOUSE CONCEPT



FAMILY-CENTERED DESIGN

In this project, a family house concept was carefully crafted to meet the homeowner's specific vision. Thanks to the collaboration between our interior designer, Merve, and architectural cabinet designer, Meryem, we were able to bring the client's dream kitchen to life. Every detail was tailored to ensure the space is both functional and welcoming, perfectly blending modern style with warmth.





T H E  
S A N D S T O N E  
H A V E N  
FAMILY HOUSE CONCEPT

DESIGNING WITH PURPOSE:  
THE HEART OF THE HOME

In this project, the kitchen island serves as the central hub of the home, designed with the client's needs in mind to enhance functionality and create a smooth, seamless flow. The Waterwall island was carefully crafted to meet the demands for both beauty and practicality, ensuring that it blends effortlessly into the space while offering ample workspace and storage. The thoughtful design of this focal point maximizes usability, all while preserving the warm, inviting feel of the family-oriented atmosphere.

QW KITCHEN & BATH

T H E  
S A N D S T O N E  
H A V E N  
FAMILY HOUSE CONCEPT



SLEEK & FUNCTIONAL

We designed a functional and stylish small kitchen, featuring a custom-made hood crafted in our workshop. Every detail, from color choices to materials, was carefully selected with the homeowner to ensure the space was both practical and beautiful. This project was a true pleasure to bring to life.



THE  
SANDSTONE  
HAVEN  
FAMILY HOUSE CONCEPT

## FUNCTIONAL & ELEGANT

This kitchen design strikes a perfect balance between functionality and elegance. The light, neutral cabinetry offers a fresh, airy feel while complementing the warmth of the wooden floors. The use of gold hardware adds a touch of sophistication, while the thoughtfully chosen appliances, like the built-in microwave and dishwasher, ensure practicality without compromising on style. The layout allows for an open flow, with the island serving as a central feature for both cooking and socializing. The subtle under-cabinet lighting highlights the beautiful tile backsplash, enhancing the overall ambiance. Whether you're cooking, entertaining, or simply enjoying a quiet moment, this kitchen effortlessly combines beauty and convenience.



IMPERIAL  
COBBLESTONE  
RUSTIC TEXAS CHARM



Bold character meets timeless craftsmanship in custom kitchen design. For this project, we created a space defined by a Cobblestone finish deep, bold, and grounded, yet still carrying a sense of classic warmth and rustic charm. The cabinetry was crafted from high-quality hardwood and finished with a custom cobblestone stain, preserving the richness of the wood grain while giving the kitchen a refined, architectural presence.

QW KITCHEN & BATH





# I M P E R I A L C O B B L E S T O N E

RUSTIC TEXAS CHARM

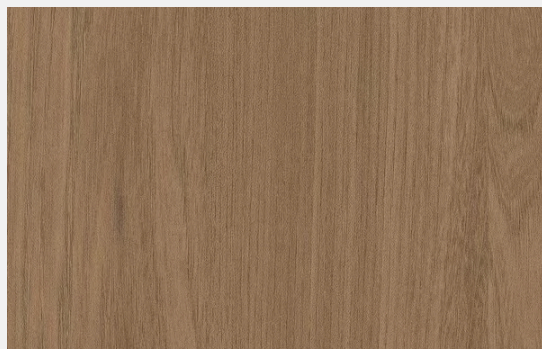
The client requested a highly functional island, we incorporated custom accessories and integrated pop-up features, keeping the surface clean while maximizing usability. Despite the technical functionality, the overall design remains warm, cohesive, with wood tones seamlessly throughout the space.

To complement the depth of the cabinetry, we selected satin stainless steel finishes for the hardware, faucet, and appliances. This choice adds a modern edge and soft contrast, balancing the bold wood tones without overpowering the design.

QW KITCHEN & BATH

I M P E R I A L  
C O B B L E S T O N E  
RUSTIC TEXAS CHARM





## COMMERCIAL WORK

---

QW KITCHEN & BATH

# AUSTIN EMERGENCY CENTER



This project was far more than a production and installation scope it was a full-scale response to urgency, complexity, and responsibility. The entire floor had previously suffered significant water damage, meaning the space could not simply be updated; it had to be carefully rebuilt and restructured. At the same time, the timeline was one of the most demanding we have ever faced: full completion in less than three weeks.

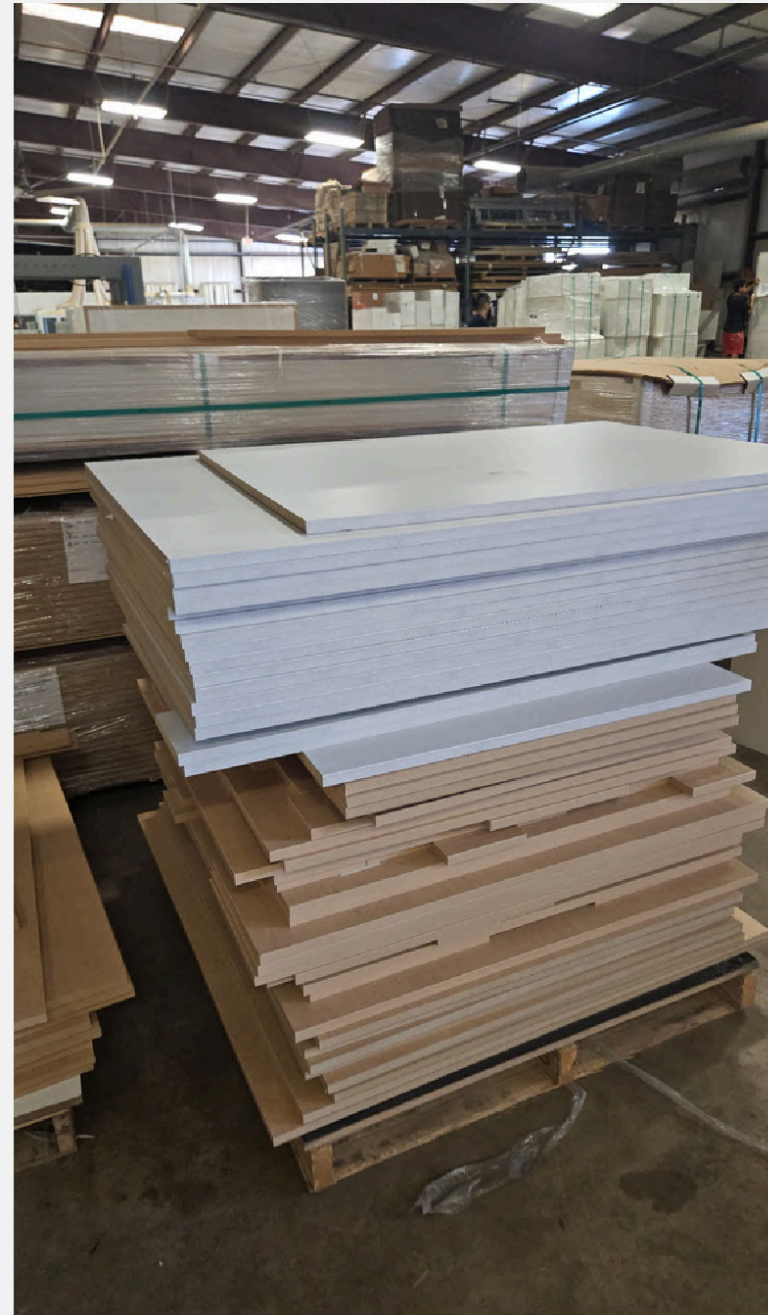
QW KITCHEN & BATH



# P R O D U C T I O N   S T E P

What made the challenge even greater was the level of customization required. Every single element – from panels and millwork components to cabinetry and countertops – was produced in custom sizes and custom colors. Nothing was standard. This required a tightly controlled manufacturing process, precise coordination, and seamless communication between design, production, and installation teams. All panels were specially ordered, carefully labeled, and systematically organized to ensure flawless sequencing during installation, where even minor delays were not an option.

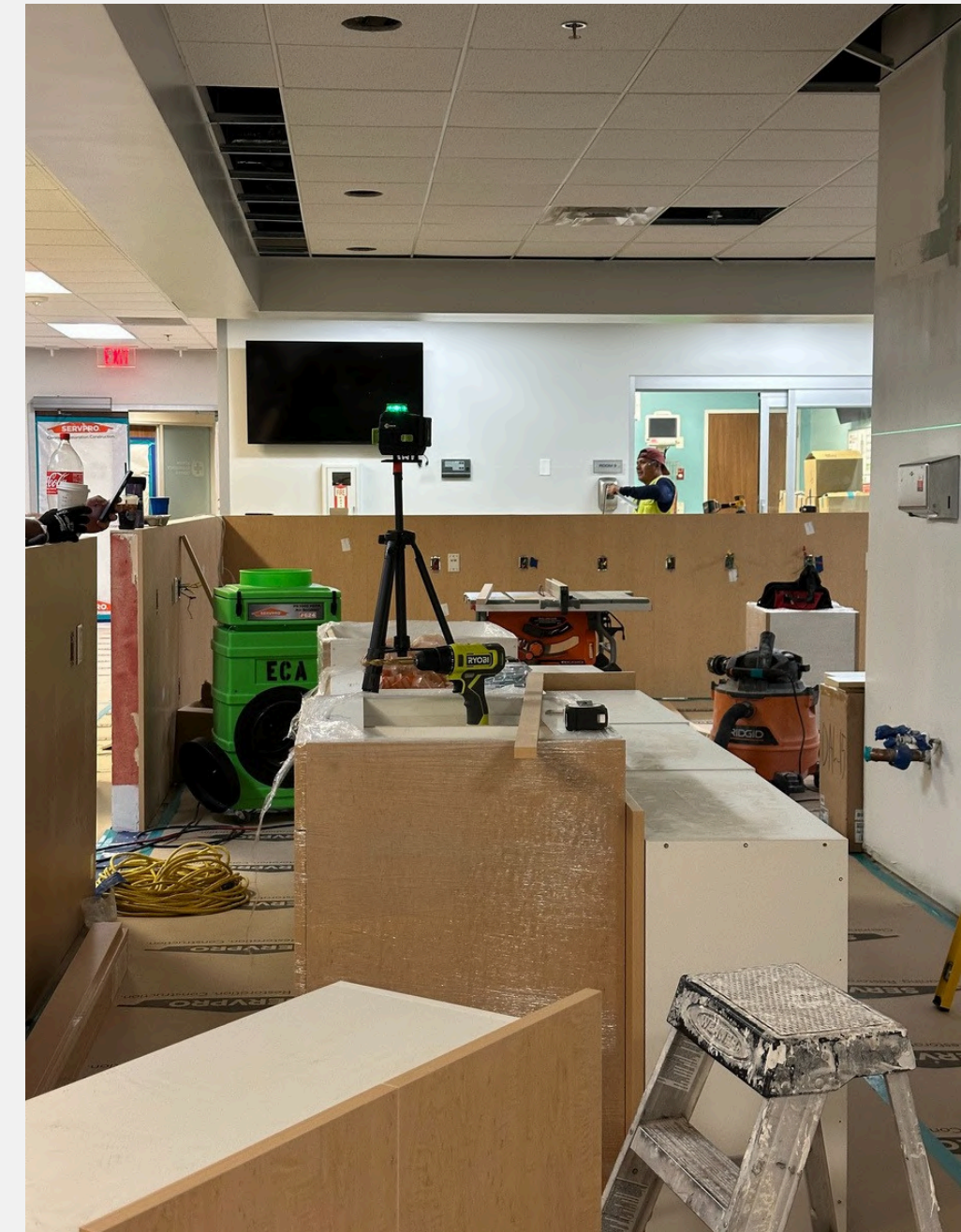
---



# I N S T A L L A T I O N   P R O C E S S

The project was part of a healthcare-related environment, performance standards were just as critical as speed. All millwork and cabinetry were fabricated using materials from the Laminate Antimicrobial Collection, selected specifically for their hygiene performance, durability, and suitability for high-traffic professional spaces. Every material choice balanced technical requirement with visual consistency.

---



# I N S T A L L A T I O N   P R O C E S S

At the center of the space, a custom-designed oval nursing desk became both the functional heart and architectural focal point. This feature required detailed planning to ensure ergonomic efficiency, circulation flow, and integration with surrounding millwork. The nursing station countertops were also produced in laminated antimicrobial finishes, ensuring a cohesive design language while maintaining clinical-grade performance.

---



# I N S T A L L A T I O N   P R O C E S S

Throughout the entire process, the QW team operated as more than a fabrication provider. We managed on-site measurements, design development, production coordination, problem-solving, and full installation, working as a unified system under intense time pressure. Every cabinet, countertop, handle, and installation detail was delivered under the QW workmanship guarantee, reinforcing both quality control and long-term reliability.

---



QW KITCHEN & BATH

# F I N A L   R E S U L T

This project was delivered for SERVPRO, requiring rapid coordination and execution standards aligned with emergency restoration timelines. Despite the pressure, the process remained structured, disciplined, and quality-driven from start to finish.

---



QW KITCHEN & BATH

# F I N A L   R E S U L T

What emerged was not just a fast-tracked build, it was a demonstration of how a large-scale, technically demanding project can be executed under extreme constraints without sacrificing craftsmanship, order, or design integrity.

Precision guided every step, from the first measurement to the final installation.

This was a project where urgency met expertise, where speed never replaced quality, and where teamwork turned pressure into performance.

---



W E S T L A K E  
C O U N T R Y C L U B

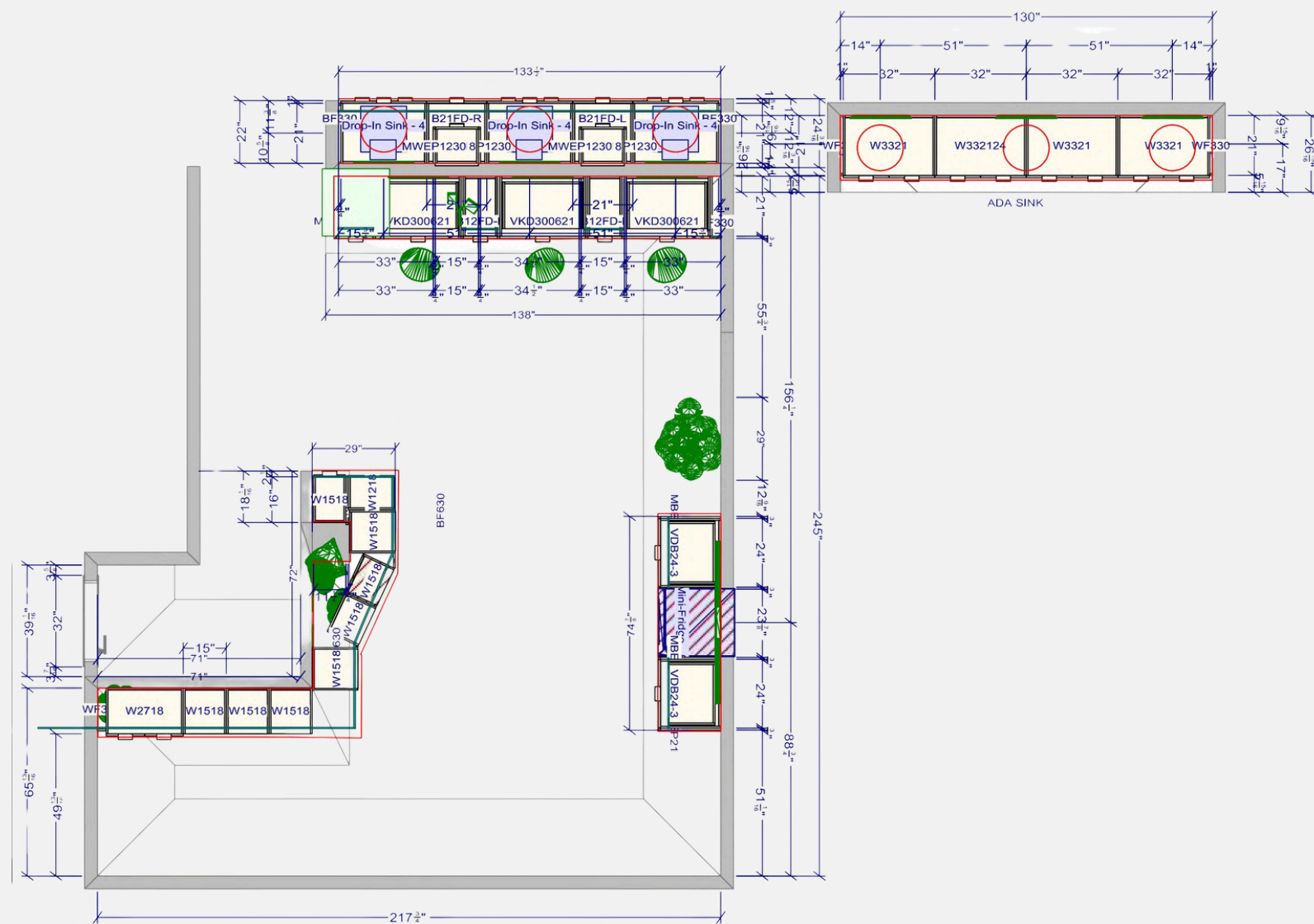


For this project at Westlake Country Club, we created a fully custom-designed interior environment tailored to meet the club's elevated standards. The scope extended across multiple spaces, including locker room bench areas, makeup vanity cabinetry, men's and women's restrooms, and towel and linen storage cabinetry, all developed as part of a cohesive design vision.



# PLAN AND RENDER

All millwork and cabinetry were fabricated in high-end walnut veneer sourced from Spain, chosen for its depth, warmth, and luxurious grain character. Every component was produced in fully custom sizes, ensuring perfect integration with the architectural layout and functional requirements of the space. From initial concept through final installation, this project was executed as a complete design-build turnkey service by our team.



# ELEGANCE & SILENCE



## PACE & BALANCE

To achieve a unified and elevated aesthetic, we developed a comprehensive moodboard.



QW KITCHEN & BATH



We guided the selection of cabinetry, countertops, hardware, and fixtures. Final design detailing included satin stainless steel handles and faucets, paired with quartz countertops featuring soft gold and gray veining, creating a balanced palette of warmth, refinement, and durability.



## W E S T L A K E C O U N T R Y C L U B

The millwork and cabinetry phase required exceptional coordination. A total of 100 custom panels were, produced, labeled, and organized, streamlining production installation while maintaining precision under tight scheduling. In addition, over 40 custom cabinet carcasses were fabricated, allowing the project to move efficiently from manufacturing to on-site assembly without delays.

This project demonstrates our ability to deliver high-end hospitality millwork at scale – combining material excellence, custom fabrication, and structured execution from start to finish.

QW KITCHEN & BATH





# QW

KITCHEN & BATH



## CONTACT US

[www.qwcabinets.com](http://www.qwcabinets.com)

---

Phone: +1 512 985 8417

---

[info@qwcabinets.com](mailto:info@qwcabinets.com)

---

8868 Research Boulevard Suite #201, Austin, TX, USA

---

QW KITCHEN & BATH