



UNMANNED OPERATOR

WWW.UNMANNED-OPERATOR.COM

DRONE SOLUTIONS FOR OIL AND GAS

A LITTLE ABOUT US...

- KRIS HEIDELBERGER IS THE OWNER OF BLACKWELL ELECTRIC AND IS AN ELECTRICIAN BY TRADE. HE HAS BEEN WORKING IN OIL AND GAS FOR 10+ YEARS AND IS ALSO A PART OWNER OF UNMANNED OPERATOR.
- TRAVIS JOHNSON HAS WORKED IN THE OIL AND GAS INDUSTRY AS A LEASE OPERATOR FOR ABOUT 8.5 YEARS. HE IS NOW THE PART OWNER AND PILOT (FAA PART 107 CERTIFIED FOR MORE THAN 2 YEARS) FOR UNMANNED OPERATOR.
- AS A TEAM, WE HAVE NEARLY 20 YEARS OF COMBINED OIL AND GAS EXPERIENCE, NOT MANY DRONE COMPANIES CAN SAY THAT!



WHY UNMANNED OPERATOR?

- WE KNOW THE INDUSTRY, WITH OUR PREVIOUS EXPERIENCE IN OIL AND GAS, AND WE UNDERSTAND THE NEED FOR USING DRONES TO STREAMLINE OPERATIONS.
- WE FLY THE BEST DRONES AND EQUIPMENT ON THE CIVILIAN MARKET. IN MOST CASES OUR CAMERAS WILL DOUBLE THE RESOLUTION OF ANY OTHER COMPANY IN THE AREA.
- NOT ONLY DO WE HAVE GREAT CAMERAS, BUT OUR ACCURACY WILL RIVAL MOST SURVEY CREWS. WE ARE ABLE TO ACHIEVE 1-3CM ACCURACY WITH OUR MAPS USING OUR RTK BASE STATION (ONLY AVAILABLE WHERE WE HAVE CELLULAR SERVICE).

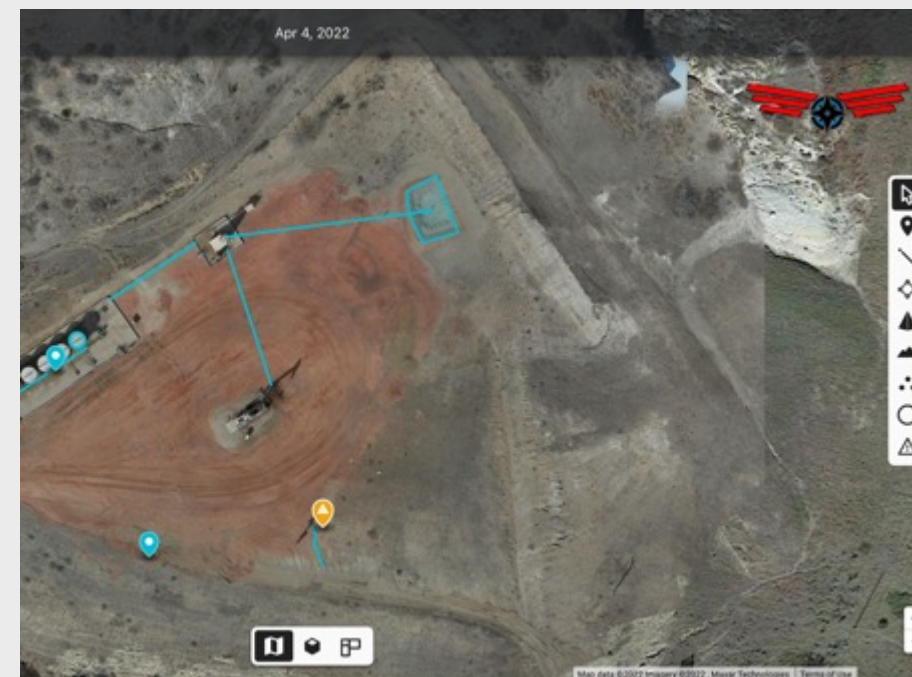
MEET “MATRICE” ... OUR FLAGSHIP DRONE

- THE DJI MATRICE 300 RTK IS THE WORKHORSE OF OUR OPERATION. IT IS MORE CAPABLE, SAFER, AND MORE ADAPTABLE THAN ANY DRONE ON THE MARKET.
- PAIRED WITH THE DJI ZENMUSE P1 CAMERA WE CAN CREATE CRYSTAL CLEAR MAPS 6X FASTER THAN ANY CONSUMER DRONE ON THE MARKET. THE 35MM SENSOR BOASTING 45 MEGAPIXELS IS IN A CLASS OF ITS OWN.
- TIME OVER TARGET IS REDUCED BY 6X MEANING LESS RISK TO YOUR OPERATION.
- ROTOR LOSS MID FLIGHT? NOT A PROBLEM, THE M300 CAN SAFELY LAND WITH ONLY 3 ROTORS.



WHAT WE DO...

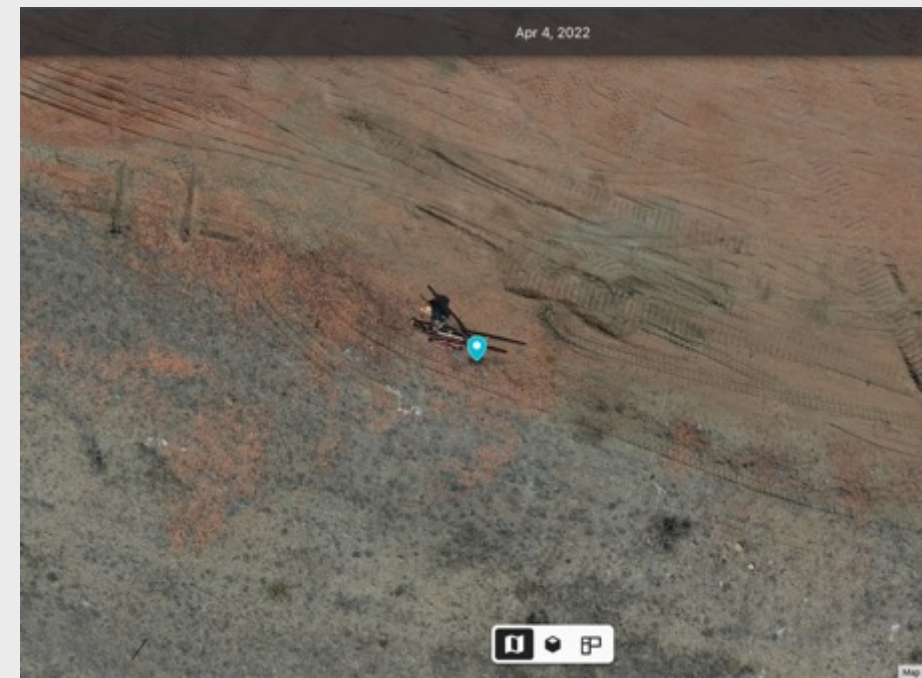
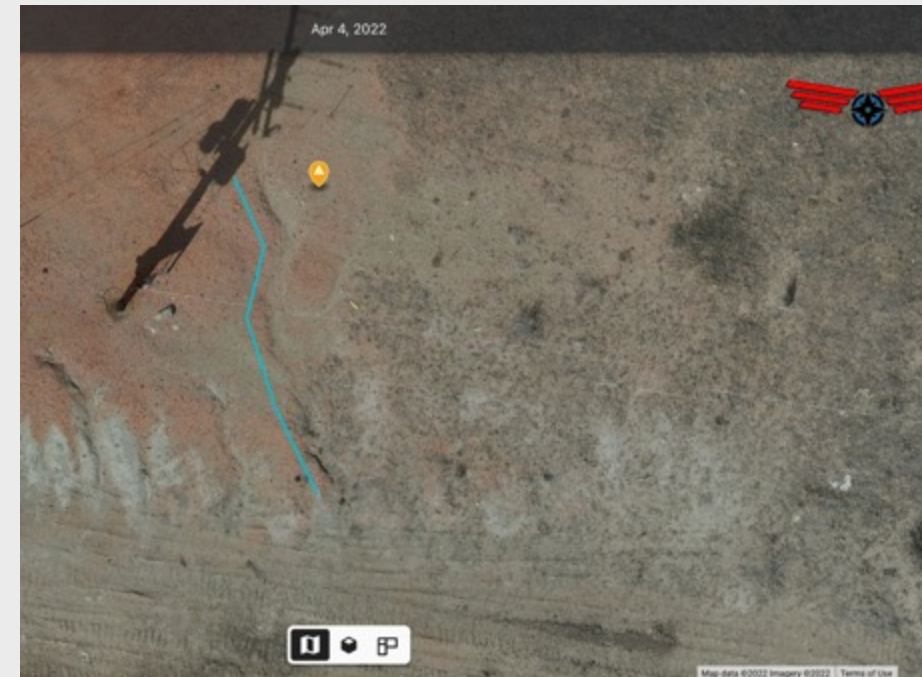
- SITE SURVEY 2D
- SITE SURVEY +3D
- CONSTRUCTION PROGRESSION REPORTS
- PIPELINE ROW MAPPING
- OPTICAL GAS IMAGING
- SPILL SURVEYS (BEFORE AND AFTER)
- CUSTOM



Apr 4, 2022

SITE SURVEY 2D

- THIS PRODUCT IS DESIGNED TO DO ONCE A YEAR FOR ALL SITES TO CHECK FOR DIKE EROSION, AND OTHER UNKNOWN DAMAGES CAUSED TO THE SITE OVER THE WINTER OR AFTER HEAVY RAIN.
- OUR MOST BASIC 2D SURVEY, BUT VERY COST EFFECTIVE.
- YOU WILL GET A MAP OF THE ENTIRE PRODUCTION SITE, ANNOTATED EROSION SPOTS, ANNOTATIONS OF ANY ISSUES ON THE SITE THAT SHOULD BE ADDRESSED. ALL ANNOTATIONS WILL HAVE EXACT GPS COORDINATES.
- CAN BE OVERLAYED YEAR TO YEAR TO EASILY SEE CHANGES TO THE SITE.

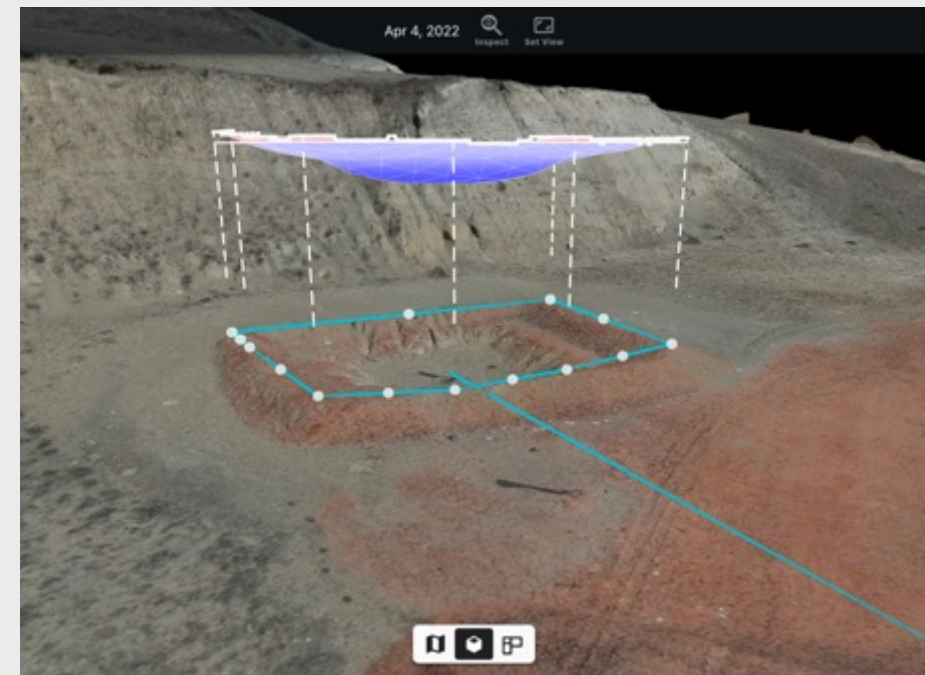
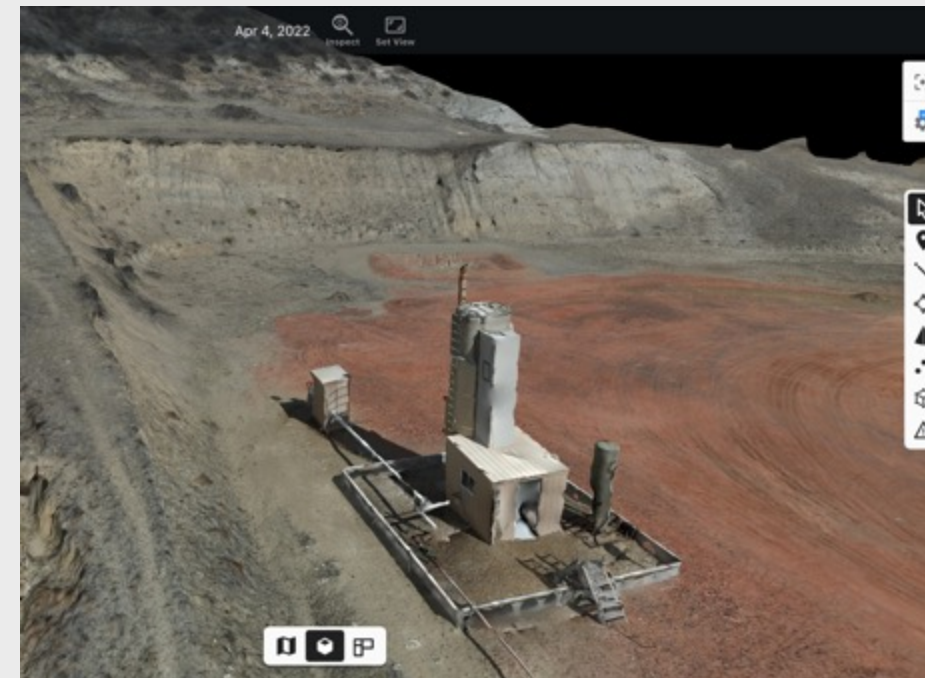


Apr 4, 2022

Inspect Set View

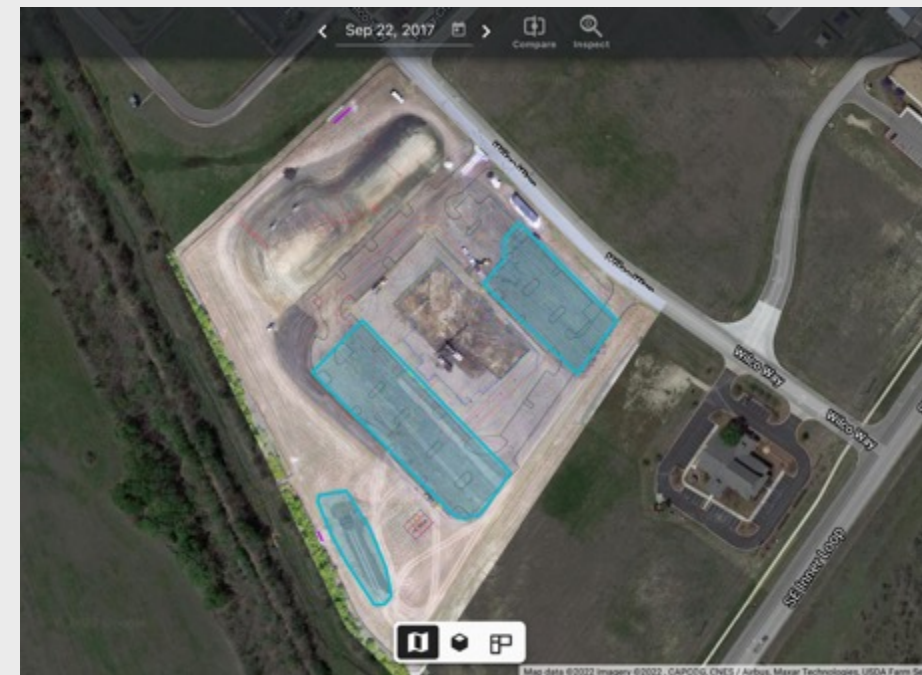
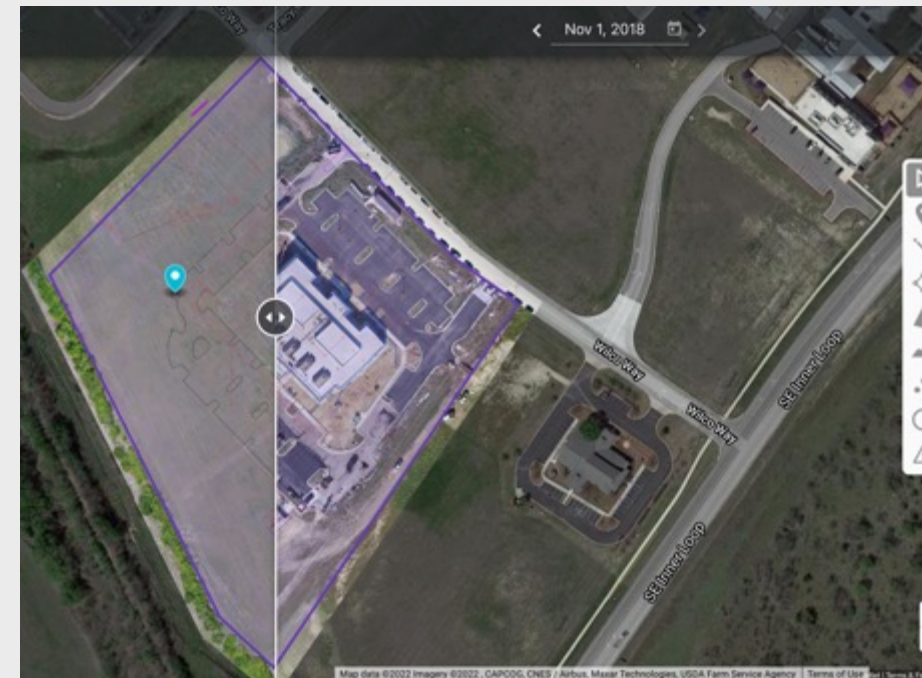
SITE SURVEY +3D

- ALL THE OFFERINGS OF SITE SURVEY 2D, WITH THE ADDITION OF 3D.
- THE ADDITIONAL 3D IS A POWERFUL VISUAL AND PRACTICAL TOOL.
- MEASURE ANYTHING IN MAP WITH PRECISION ACCURACY.
- EVEN MEASURE VOLUMES OF YOUR CONTAINMENT SYSTEMS.



CONSTRUCTION PROGRESSION REPORTS

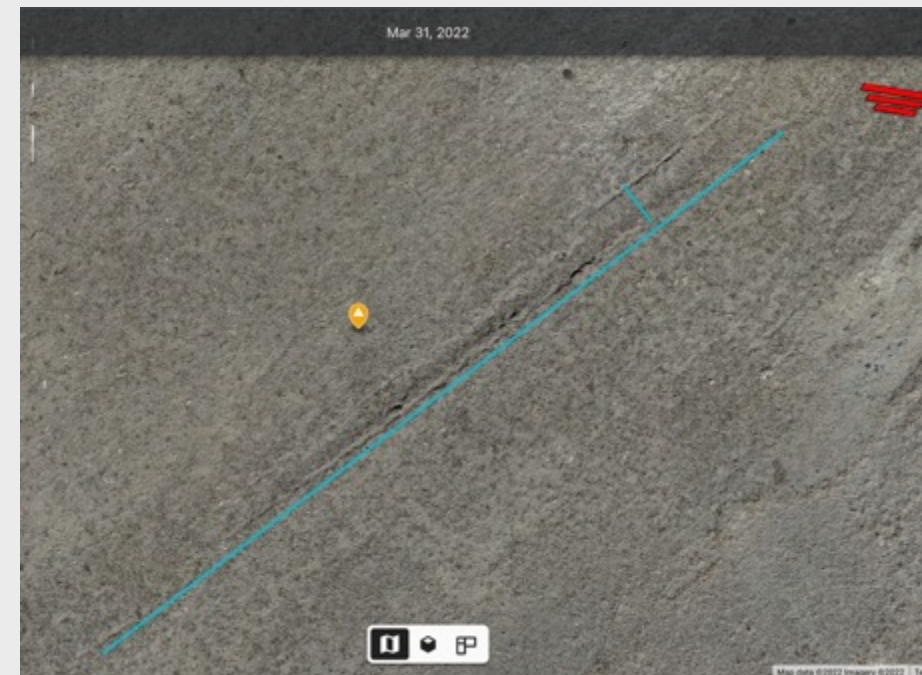
- FROM PRECONSTRUCTION SITE DOCUMENTATION TO PROJECT CLOSEOUT, WE CAN TRACK PROJECT PROGRESS TO KEEP YOU ON SCHEDULE.
- CAN SCHEDULE FLIGHTS UP TO TWICE WEEKLY OR AS LITTLE AS ONCE A MONTH.
- THIS INCLUDES A FULL 2D MAP, PICTURES FROM ALL CARDINAL DIRECTIONS, AND A TOP-DOWN PICTURE FROM THE MIDDLE OF THE SITE.



Mar 31, 2022

PIPELINE ROW MAPPING

- ONE OF OUR MOST INNOVATIVE PRODUCTS.
- NO MORE SD CARDS WITH THOUSANDS OF PICTURES TO INSPECT.
- WE FLY YOUR ROW, WE INSPECT YOUR ROW, AND WE REPORT OUR FINDINGS VIA INTERACTIVE MAPS.
- YOU GET ALL OF THE ABOVE PLUS AN ARCGIS INTEGRATABLE MAP TO USE IN EVERYDAY OPERATIONS.



OPTICAL GAS IMAGING (OGI)

- SIERRA OLYMPIC OGI CAMERA FITTED ON A LOADOUT SPECIFIC TO OUR DRONE.
- FASTER, MORE EFFICIENT OGI SITE SURVEYS
- FIND, FIX, CONFIRM WITHIN 48 HOURS
- DRONE INSPECTIONS PAIRED WITH ROUSTABOUTS ABLE TO FIX THE ISSUE SPOTS SOMETIMES THE SAME DAY.
- SITE MAPPING WITH OVERLAYED ISSUE SPOTS



SPILL SURVEYS (BEFORE AND AFTER)

- LARGE SPILLS CAN BE A COSTLY EXPENSE TO PRODUCERS, ESPECIALLY IF THE SPILL SITE ISN'T PROPERLY CLEANED UP. LET US SURVEY THE SITE BEFORE & AFTER CLEANUP SO YOU HAVE VISUAL PROOF THE JOB WAS DONE TO YOUR STANDARDS.
- THIS INCLUDES PICTURES OF THE SPILL, MAPPING OF THE SPILL SITE, AND REMAPPING THE SITE AFTER CLEANUP.
- SPILL SITE MAP WILL SHOW THE SPILL SITE, EXACT AREA AFFECTED (IN ACRES) AND FEATURE AND OVERLAY OF BOTH MAPS WITH THE ABILITY TO CLICK AND DRAG BETWEEN SPILL AND CLEANUP MAPS.
- WE CAN ALSO USE OUR PLANT HEALTH TOOL TO DETERMINE IF LARGER AREAS OF LAND ARE IN FACT IMPACTED IF THE VEGETATION IN THE AREA IS GROWING AND MORE THAN 2 IN TALL.



CONTACT INFORMATION



UNMANNED OPERATOR

- EMAIL TRAVIS@UNMANNED-OPERATOR.COM
- WEBSITE WWW.UNMANNED-OPERATOR.COM
- PHONE (218)-791-1229