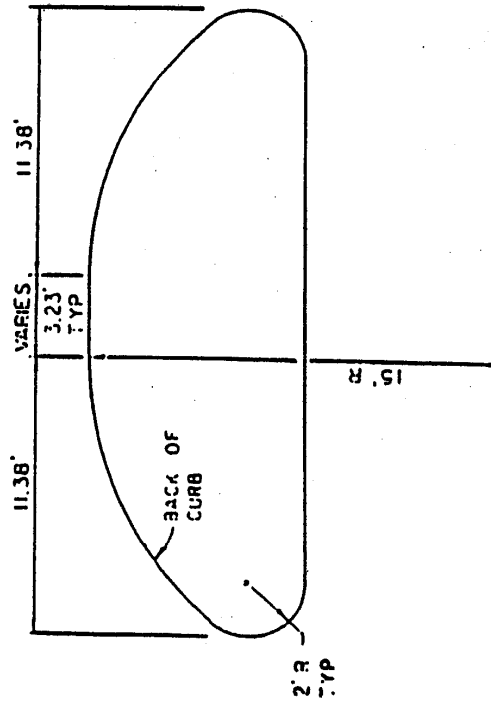
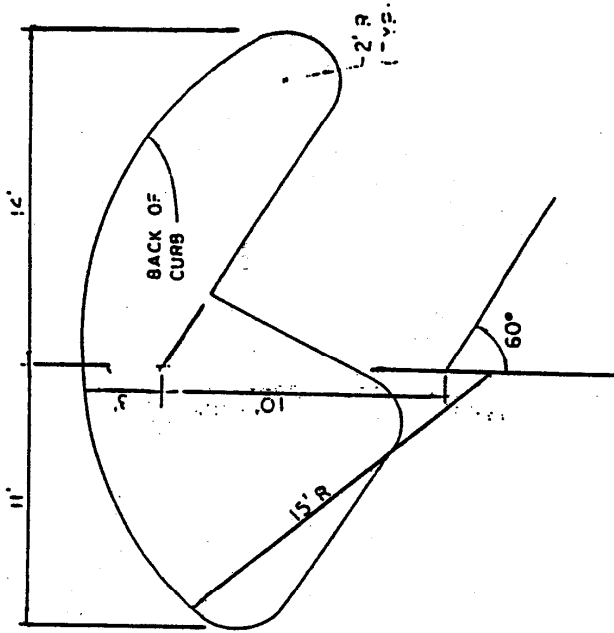


§ 4. END ISLANDS FOR PARKING LOTS.

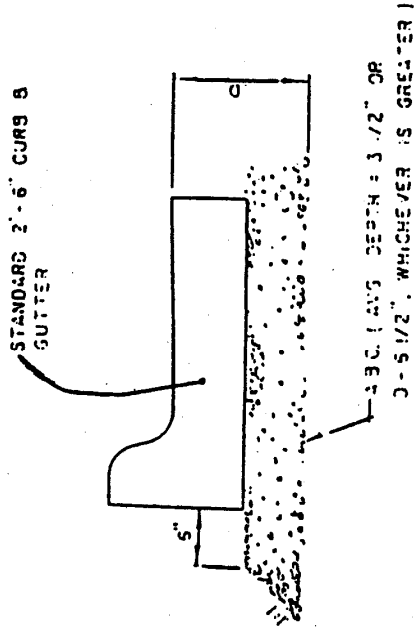


DATE	REVISIONS	DESCRIPTION

STD. NO.
1.09

END ISLANDS FOR PARKING LOTS

§ 5. A.B.C. UNDER TWO FEET SIX INCHES CURB AND GUTTER.

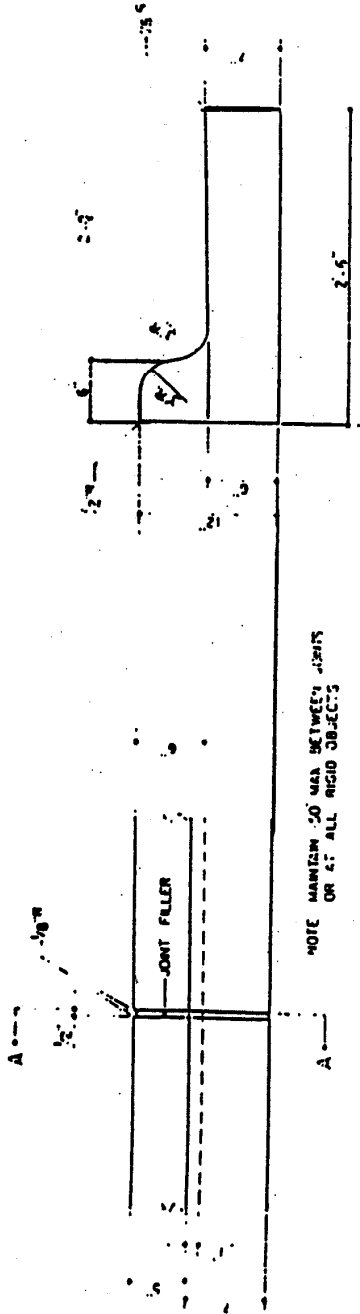


NOTE: THIS DETAIL ONLY APPLIES TO THOROUGHFARE SECTIONS 35' & GREATER, OR PAVEMENT DESIGNS GREATER THAN 10'

REVISIONS	
DATE	DESCRIPTION

A.B.C. UNDER 2'-6" CURB & GUTTER	STD. N 1:10
----------------------------------	----------------

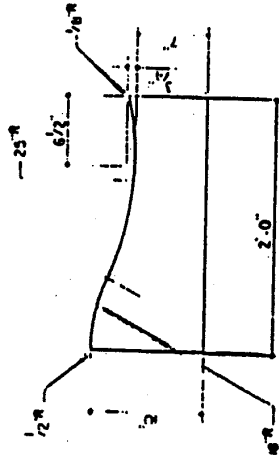
§ 6. STANDARD CONCRETE CURB AND GUTTER.



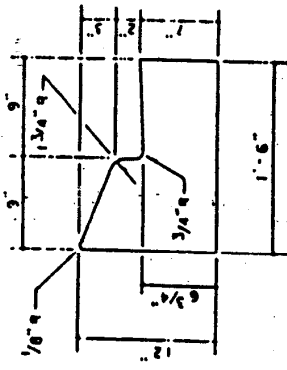
FRONT ELEVATION
TRANSVERSE EXPANSION JOINT

SECTION A-A
SIDE ELEVATION

COMBINATION CURB AND GUTTER



VALLEY GUTTER
SIDE ELEVATION



MEDIAN CURB AND GUTTER
SIDE ELEVATION

NOTES

1. CONCRETE SHALL BE 3,000 P.S.I.
2. CONTRACTION JOINTS SHALL BE SPACED AT 10' INTERVALS. (A 15' SPACING WILL BE ALLOWED WHEN A MACHINE IS USED.)
3. VALLEY GUTTER IS TO BE USED ONLY BY DIRECTION OF TOWN ENGINEER
4. FINISH ALL CONCRETE WITH CURING COMPOUND.

DATE	REVISIONS
0-18	DESCRIPTION MEDIAN CURB & GUTTER SSS

STANDARD CONCRETE CURB AND GUTTER

	STD. NO
	1.11