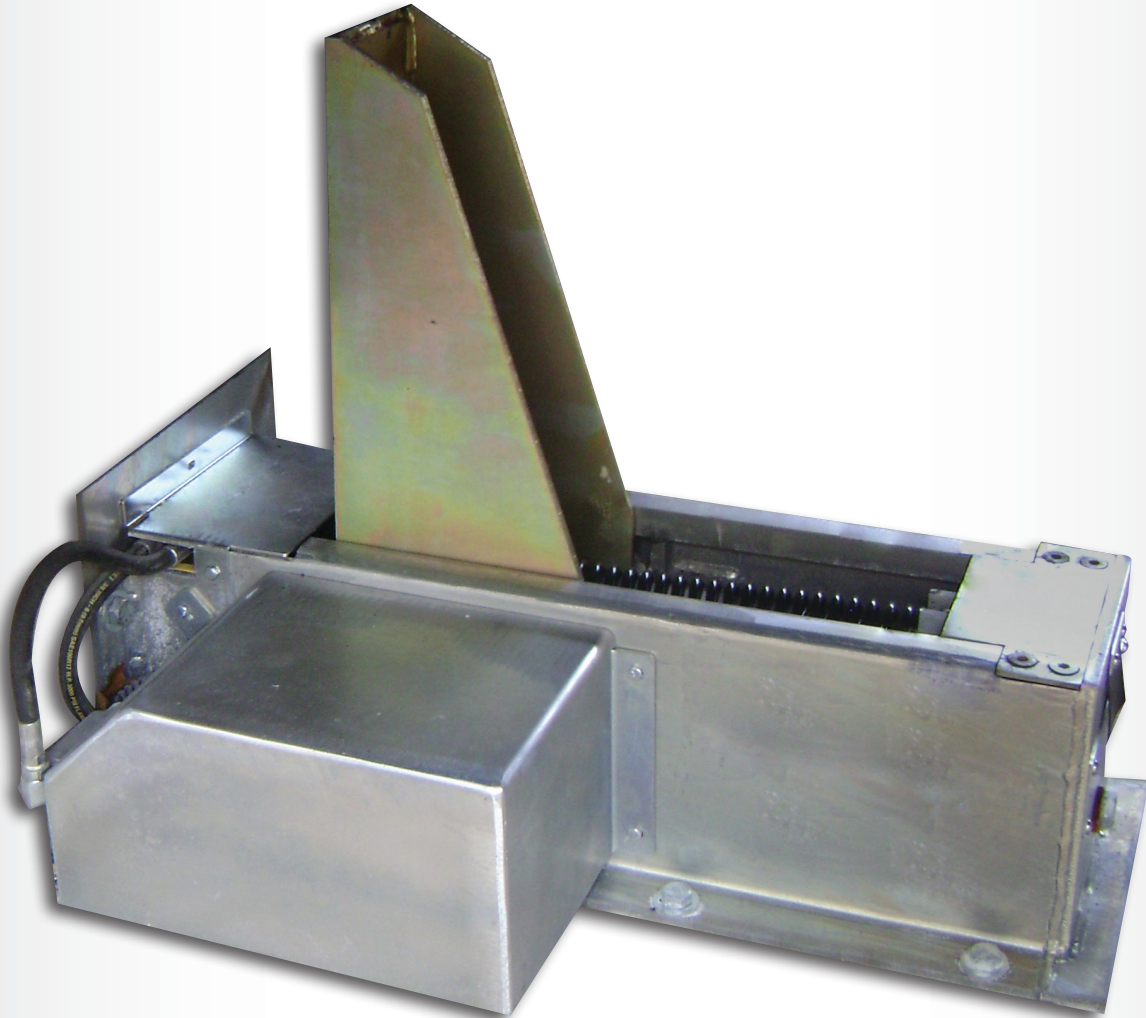


## AUTOMATIC VEHICLE RESTRAINT



\* PowerHold® shown with self contained pump and motor.



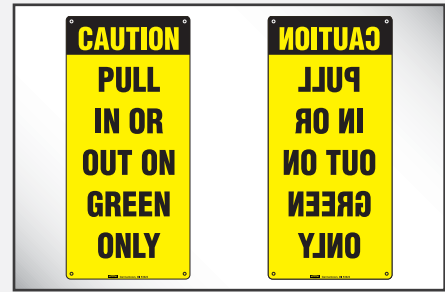
- ▶ Push Button Activation
- ▶ Restraining Force in Excess of 32,000 lbs.
- ▶ Non-Impact, Low Profile Design
- ▶ Corrosion Resistant Zinc Plated Finish
- ▶ Positive Restraining Force Eliminates "Trailer Creep"
- ▶ Automatic Re-Store Feature
- ▶ Solid State Control - PLC
- ▶ Amber Light - Caution Indicator
- ▶ Keyed Override
- ▶ Dock Leveler or Door Interlock
- ▶ LED Interior and Exterior Lights
- ▶ Made in the USA
- ▶ Captures NHTSA regulation "Rear Impact Guards" (RIG) and meets ANSI spec MH30.3 standards



PowerHold® can be drive mounted or wall mounted.



Controls are easily combined with dock leveler controls to integrate entire dock system.



A set of standard and mirrored image caution signs notifies truck driver.

## VEHICLE RESTRAINT SYSTEM

The PowerHold® is a non-impact, self-aligning, hydraulic vehicle restraint and is available as a standalone unit or integrated with other loading dock equipment through an optional integrated control panel. The unit helps prevent unexpected trailer departure from the loading dock during the loading/unloading process.

## OPERATION

Once a trailer is backed into position against the dock bumpers, the operator depresses the “Engage” button, activating the PowerHold to rotate up and seek out the trailer’s Rear Impact Guard (RIG). The restraint then applies continuous pressure to the RIG to securely hold the trailer to the dock. After loading is complete, the operator depresses the “Release” button, lowering the PowerHold unit to a safely stored position, releasing the trailer.

## SAFETY FEATURES

- Positive hydraulic retention of RIG for zero running room.
- The no shear pin design firmly holds fully loaded or empty trailers after seeking, finding and securing the RIG.
- Amber caution light when restraint is in process of engaging RIG or in override conditions.
- Full communication package with signage and interior/exterior red/green lights in opposing mode.
- Restraining force in excess of 32,000 lbs.

## ADVANCED COMMUNICATION

For safer communication at any loading dock, the PowerHold restraint uses advanced controls with an LED 3-light system. As a truck approaches, the exterior light is green and the interior light is red. Once the trailer is in position and the PowerHold is activated, the exterior light will change to red, warning the driver not to pull away, and interior light to amber while the restraint is in motion and green once the trailer is secured, allowing the dock attendant to safely enter the trailer. When the trailer is released and the restraint is safely stored, the interior light reverts back to red and the exterior light changes back to green.

If the PowerHold is unable to secure the trailer’s RIG due to abnormal trailer conditions, the restraint will communicate the fault condition by illuminating an amber “Caution” light on the controls, or by an optional audible alarm. If “By-Pass” of the system is necessary, it is recommended that you secure the trailer by other means before proceeding with the loading/unloading process. In “By-Pass” mode the exterior light is red and the interior light is green, accompanied by the amber caution light indicating to the dock attendant to proceed with caution.

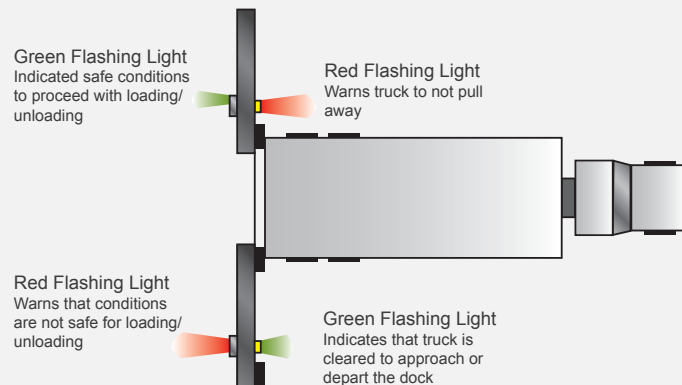
## HYDRAULICS & ELECTRICAL

The restraint is engaged by a hydraulic cylinder that allows the PowerHold restraint bar to securely engage and hold a trailer’s RIG bar. The pump and motor are 1 HP TENV at 115V and the control panel is NEMA 4/12 with all components, connections and wiring UL listed and/or recognized. Panels are built in-house in a UL-approved control panel shop.

## CONSTRUCTION

The durable zinc-plated, steel housing unit is designed to protect the self-contained motor and all internal components from any weather conditions.

| PowerHold® Series Common Options |   |
|----------------------------------|---|
| ▶                                | Integrated control panel                              |
| ▶                                | Custom interlock sequence with leveler                |
| ▶                                | Special NEMA control type                             |
| ▶                                | Cantilever bracket                                    |
| ▶                                | Remote power pack                                     |
| ▶                                | Combined with leveler powerpack (VS, VH & PR Only)    |
| ▶                                | CentraPower - Multiple units on a single power source |



DISTRIBUTED BY:



W194 N11481 McCormick Drive • Germantown, WI 53022  
Phone: 1.800.643.5424 • Email: sales@poweramp.com

[www.poweramp.com](http://www.poweramp.com)