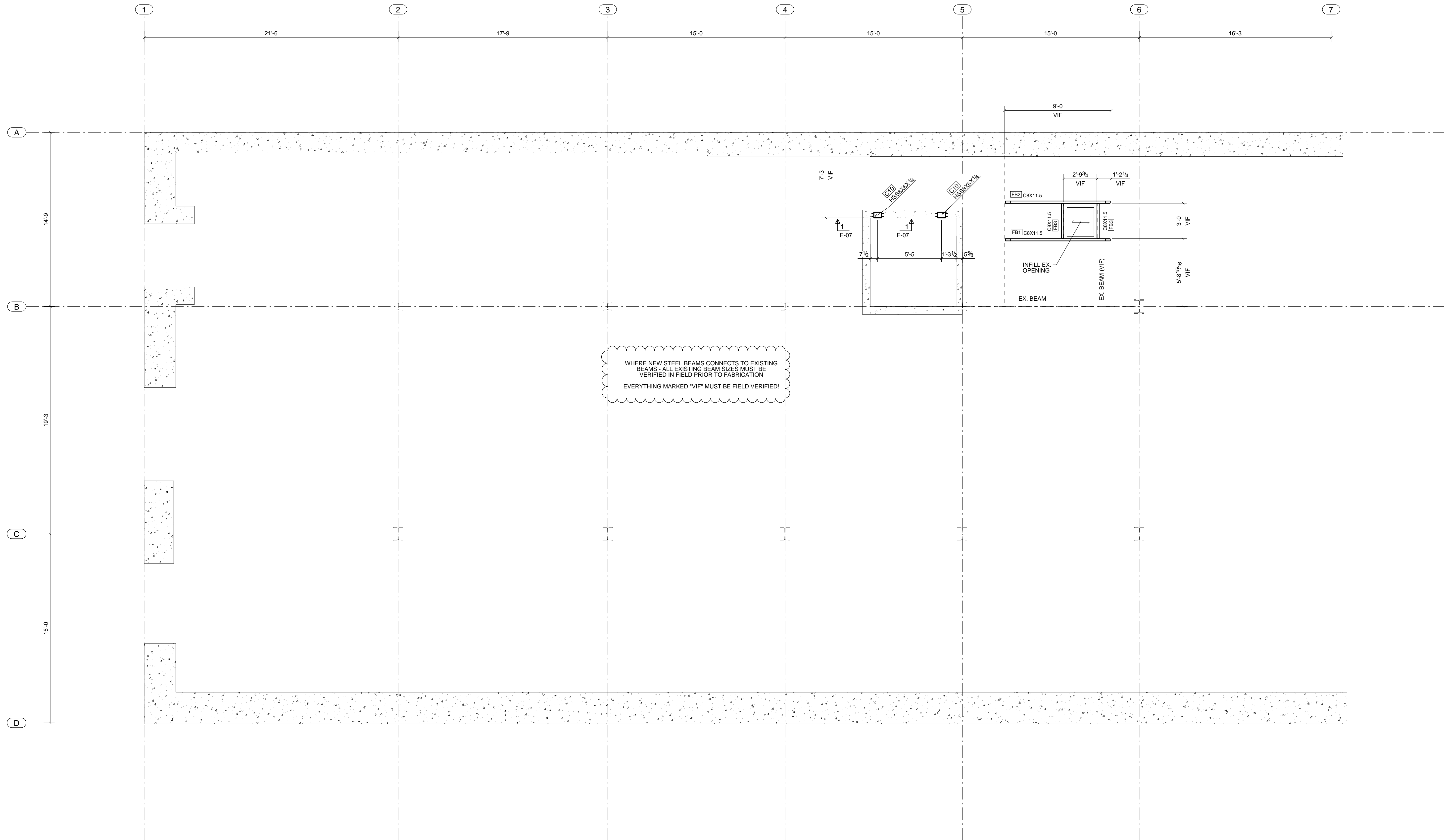
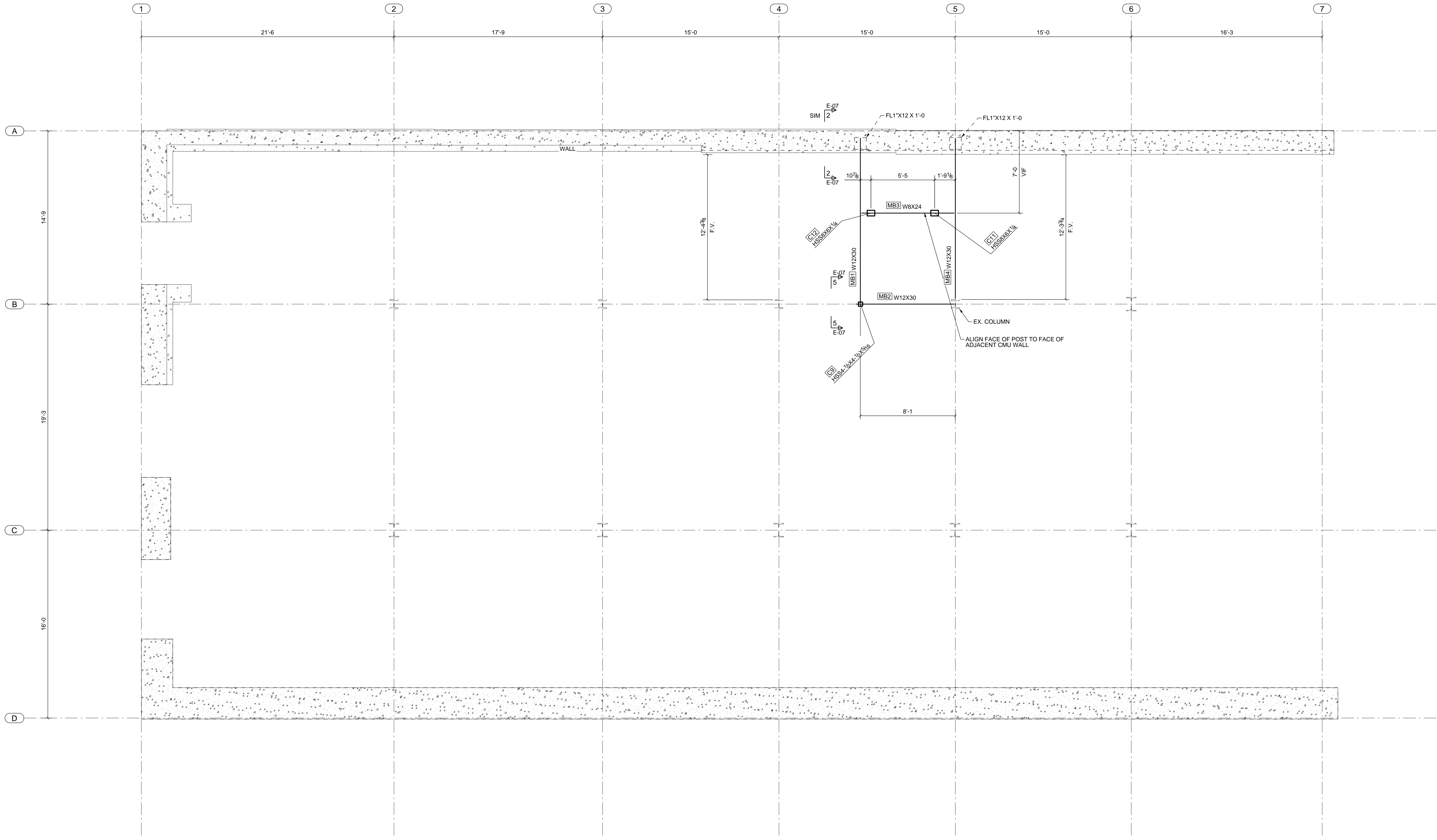


ISOMETRIC VIEW
SCALE: 1:48



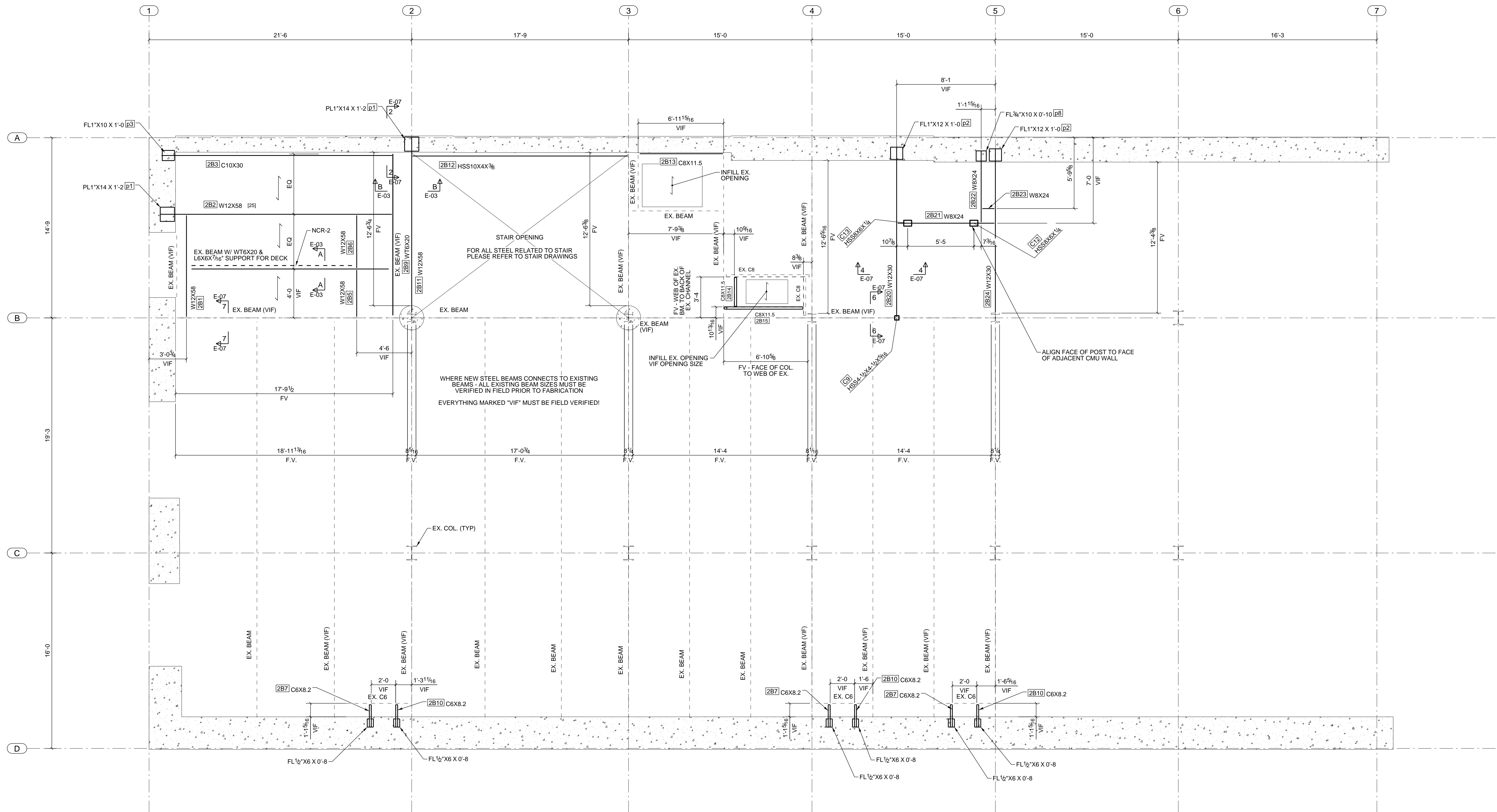
WHERE NEW STEEL BEAMS CONNECTS TO EXISTING BEAMS - ALL EXISTING BEAM SIZES MUST BE VERIFIED IN FIELD PRIOR TO FABRICATION
 EVERYTHING MARKED "VIF" MUST BE FIELD VERIFIED!

FOUNDATION FRAMING PLAN
 SCALE: 1/4" = 1'-0"

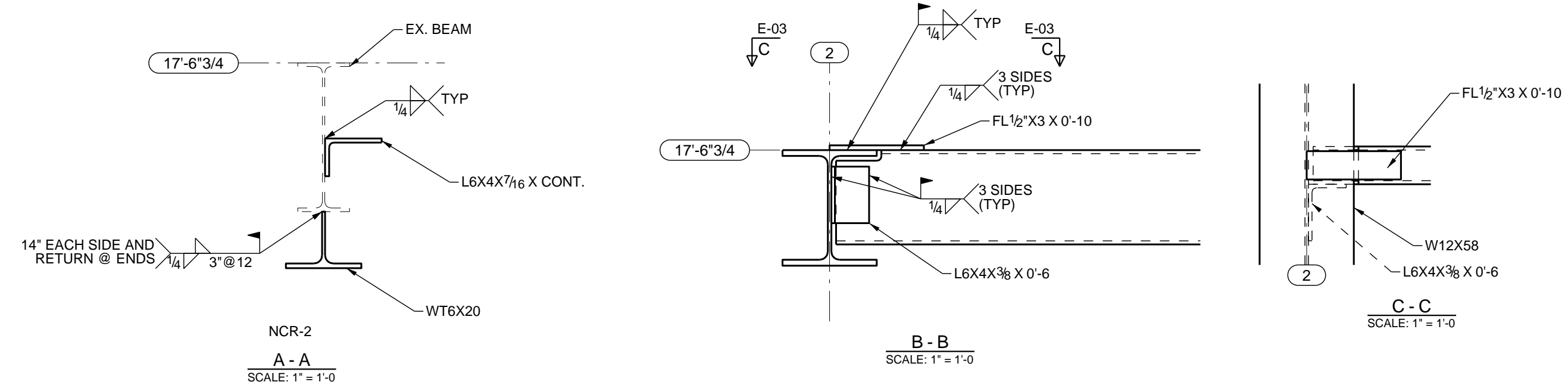


MEZZANINE FRAMING PLAN
SCALE: 1/4" = 1'-0"

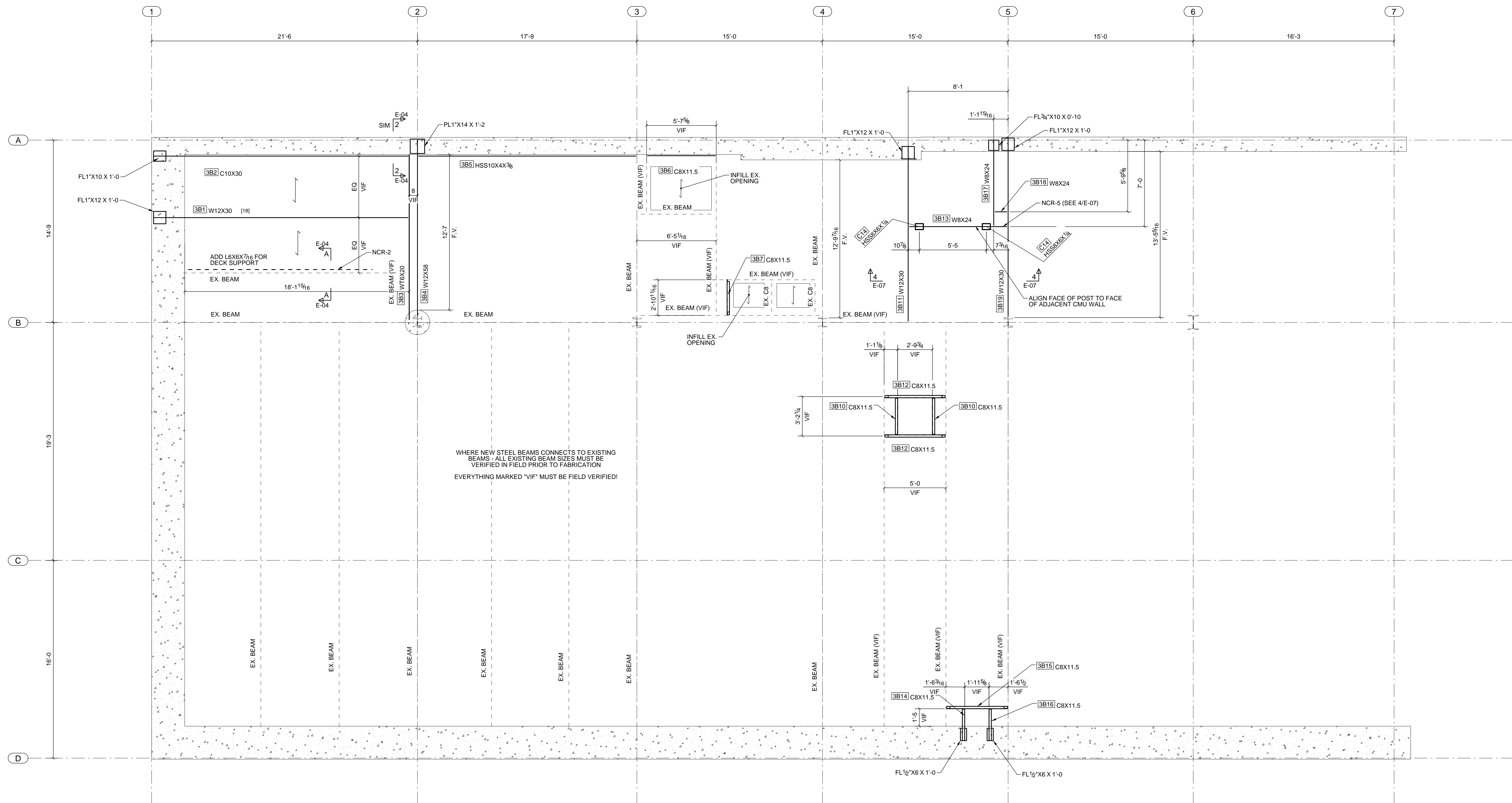
- NOTES:
- TOP OF SLAB = +9'-3 1/2" (VIF) U.O.N. WITH (±...)
 - INDICATES SPAN ORIENTATION OF 2" 20GA. GALVANIZED COMPOSITE FLOOR DECK W/ 3/4" LIGHT WEIGHT TOPPING (5 1/4" TOTAL SLAB).
 - [...] INDICATES NUMBER OF SHEAR STUDS PER BEAM, EQUALLY DISTRIBUTED.
 - ARCH. TO PROVIDE / CONFIRM ALL DIMENSIONS FOR CENTER TO CENTER OF NEW STEEL AND DIMENSIONS FOR INFILLS



2ND FLOOR FRAMING PLAN
SCALE: 1/48



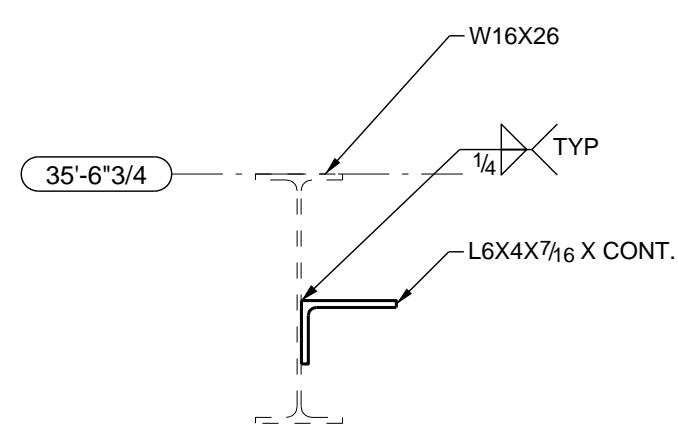
- NOTES:
- TOP OF SLAB = 18'-0" (VIF) U.O.N. WITH (±....)
 - INDICATES SPAN ORIENTATION OF 2" 20GA. GALVANIZED COMPOSITE FLOOR DECK W/ 3/4" LIGHT WEIGHT TOPPING (5 1/4" TOTAL SLAB).
 - [...] INDICATES NUMBER OF SHEAR STUDS PER BEAM, EQUALLY DISTRIBUTED.
 - ARCH. TO PROVIDE / CONFIRM ALL DIMENSIONS FOR CENTER TO CENTER OF NEW STEEL AND DIMENSIONS FOR INFILLS



3RD FLOOR FRAMING PLAN
SCALE: 1/48

NOTES:

- TOP OF SLAB = 36'-0" (VIF) U.O.N. WITH (±...)
- INDICATES SPAN ORIENTATION OF 2" 20GA. GALVANIZED COMPOSITE FLOOR DECK W/ 3/4" LIGHT WEIGHT TOPPING (5 1/4" TOTAL SLAB).
- [...] INDICATES NUMBER OF SHEAR STUDS PER BEAM, EQUALLY DISTRIBUTED.
- ARCH. TO PROVIDE / CONFIRM ALL DIMENSIONS FOR CENTER TO CENTER OF NEW STEEL AND DIMENSIONS FOR INFILLS



NCR-2
A - A
SCALE: 1" = 1'-0"

