

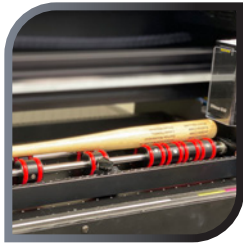
PRODUCTION FEATURES

INSPIRA SERIES

The top choice for businesses looking for versatile, reliable, and easy to use printing solutions.

Rotary Attachment

Experience a versatile and reliable rotary attachment that effortlessly transitions from printing on drumsticks to bottles. Expand your product range with ease, confidently printing on various cylindrical items with consistent, high-quality results. The taper attachment allows precise printing on tapered bottles, delivering perfect alignment and flawless quality even on challenging surfaces. With a snap-in design and no assembly required, you can quickly switch between rotary and flat items in seconds, saving time and increasing efficiency.

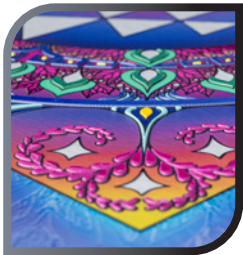


Dedicated UV LED Array for High Gloss Printing

Dual UV lamps enable fast curing while applying clear spot varnish, giving your prints a glossy, glazed finish.

This print feature employs a dedicated UV LED array to enable selective curing processes during a varnish print run.

Using sectional zone activation on UV lamps, this setup allows for the integration of different varnish finishes, from matte to glossy, within the same pass by using precise control over the timing of the UV exposure.



Optimized Gravity-Fed Ink Delivery System

- Utilizes a gravity-fed, self-agitating mechanism that ensures consistent ink flow with minimal waste, leading to reliable, uninterrupted production and enhanced cost efficiency.
- Seamlessly transition from plastic to leather with one universal ink solution. Our award-winning, semi-flexible, and highly durable ink offers bending flexibility up to 288 degrees.
- Improved adhesion and long-lasting results across diverse materials.
- Vacuum-sealed bags prevent ink spills and maintain optimal ink stability, providing a shelf life of up to 12 months.
- Experience incredible color output with our advanced ICC color profiles, and ink accommodating wider color gamuts. Designed to suit a variety of media and print speeds, the Inspira Series ensures the most accurate colors for your customers, optimizing every print for vividness and precision.

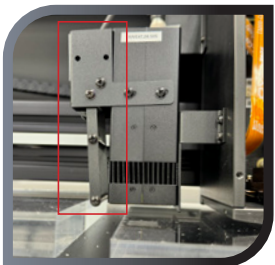
Custom Trays

Custom trays are designed specifically for your application, and tailored to meet your unique production needs. They help achieve high production repeatability and consistent print results, enhancing overall efficiency and quality.



Anti-Collision Technology

Built-in anti-collision technology is designed to protect print heads from product strikes, ensuring long-term reliability on print heads and less product waste when working with inconsistent or odd shaped objects.



Optimize Your Workflow with Advanced RIP Software

Saved Environments and Rotary Compatibility: Utilize saved environments to simplify production across various media and products, seamlessly integrating with rotary printing.

Advanced Head Control and Multi-Layering Made Easy: Flexi's latest software update enables multi-layering in a single pass. Produce up to 8 layers in a single job, allowing for inline printing and textured effects. This advancement is especially beneficial for printing on acrylic where multiple graphics need to be visible from both sides and within the layers. Previously, achieving this required up to three separate print jobs. With the new Flexi update, simply load the job and print with one click. This streamlined process enhances productivity and delivers brilliant results with minimal effort.



LOGOJET™

INSPIRA SERIES

UVx45i

18" x 24" PRINT AREA

UVx90i

24" x 36" PRINT AREA



Innovation Meets Performance

INSPIRE. EMPOWER. CREATE.

The **Inspira Series** is designed to ignite creativity and deliver unparalleled performance, whether you're working on intricate designs or large-scale projects. With cutting-edge technology in a compact footprint, this series empowers businesses to achieve precision, reliability, and versatility in every print.

- Exceptional Print Resolutions & Speed
- Award-Winning Durable & Versatile Inks
- Anti-Collision Technology
- Built-In Vacuum Table
- 3-Year Warranty, 5-Star Support





UVx45i



Rotary 360° capability



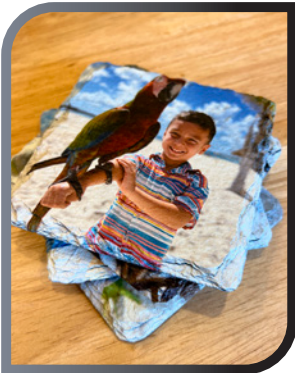
UVx90i



6" height clearance

Customizable Ink Configuration

- Enhance your designs with professional-grade finishes that not only look stunning but also add a layer of durability.
- Customize CMYK, white, and varnish channels to optimize results and efficiency for various applications.



PRINT HEAD 1
8 CHANNELS

Actual Flatbed Size	18.5" W x 30" L
Max. Curable Imprint Area	18" W x 24" L
Max. Substrate Height	5" H
Max. Substrate Weight	22 lbs
Machine Size	49.5" W x 35" L x 28.5" H
UV Lamp Specs	2x 395nm, 48V
Print Heads	1 x Epson PrecisionCore i-3200 (8 channels)
Accessory Options	360° rotary attachment, custom trays
Built-in Vacuum Bed	Holds down flat, lightweight materials
Power Source	100~120V AC, 50/60Hz or 210~230V AC, 50/60Hz; 660W
Power Consumption	~100W (standby); ~200W (operation)
Control Panel	Control Panel 13-button interface
Warranty	3-Year Limited Warranty*
Consumable Parts	Cap tops, ink, dampers, lamp filters, ink tubes
Interface	USB 2.0 Interface (1x)
Ink Process (standard)	CMYK + WW + VV (can be customized)
Ink Type (standard)	Inspira Series H2DX UV curable ink
Ink Supply	Vacuum-sealed ink bags – 220 mL
Optimized Resolution	720x600, 720x900, 720x1200, 720x1800, 720x2400, 720x3600 dpi
System Recommendations (PC)	Multi-core CPU, 16GB RAM, 512GB HDD or SSD, Windows 10 or later
Printer Weight	330 lbs
Shipping Weight	550 lbs
Shipping Dimensions	55" L x 43" W x 39" H
Environmental Condition	68~77° F; Humidity 35~70% (non-condensing)
RIP Software	Includes Flexi Complete 1 Year Subscription RIP Software. Other options include: LogoJET Print Pro powered by Kothari; Onyx Go PLUS
Installation & Training	Remote included, onsite optional

*refer to limited warranty details

Spot Varnish & Textures

- Create precise raised-textured prints ranging from artistic effects to compliant ADA Braille signage.
- Print on clear or dark surfaces with enhanced white opacity, or add varnish for extra protection or spot gloss effects.



PRINT HEAD 1
4 CHANNELS

PRINT HEAD 2
4 CHANNELS

Actual Flatbed Size	24.5" W x 37.5" L*
Max. Curable Imprint Area	24" W x 36" L
Max. Substrate Height	6" H
Max. Substrate Weight	44 lbs
Machine Size	56.25" W x 61" L x 29.5" H
Printer Stand Size (included)	32" W x 51" L x 21" H
UV Lamp Specs	2x 395nm, 48V
Print Heads	2x Epson PrecisionCore i-3200 (4 channels ea.)
Accessory Options	360° rotary attachment, custom trays
Built-in Vacuum Bed	Holds down flat, lightweight materials
Power Source	100~120V AC, 50/60Hz or 210~230V AC, 50/60Hz
Power Consumption	~140W (standby); ~350W (operation)
Control Panel	15 button interface; LED display
Warranty	3-Year Limited Warranty**
Consumable Parts	Cap tops, ink, dampers, UV lamp filters, ink tubes
Interface	USB 2.0 Interface (1x)
Ink Process (standard)	CMYK + WW + VV (can be customized)
Ink Type (standard)	Inspira Series H2DX UV curable ink
Ink Supply	Vacuum-sealed ink bags - 220 mL
Optimized Resolution	720x600, 720x900, 720x1200, 720x1800, 720x2400, 720x3600 dpi
System Recommendations (PC)	Multi-core CPU, 16GB RAM, 1TB HDD or SSD, Windows 10 or later
Printer Weight	410 lbs
Shipping Weight	750 lbs
Shipping Dimensions	65" W x 75" L x 42" H
Environmental Condition	68~77° F; Humidity 35~70% (non-condensing)
RIP Software	Includes Flexi Complete 1 Year Subscription. Other options include: LogoJET Print Pro powered by Kothari; Onyx Go PLUS
Installation & Training	Onsite installation and training

*includes extension for rotary printing and open-ended for product overhang.
**refer to limited warranty details.

Use	Resolution	Passes	Direction	Dot Size	Print Speed (m ² /h)	Print Speed (ft ² /h)	Full Bed 18x24 (minutes)
Production	720x600	2	Bi	SML	7.54	81.20	2:13
Photo	720x900	3	Bi	SML	5.67	61.02	2:57
Fine Detail	720x1200	4	Bi	SML	4.42	47.58	3:47

NOTE: All time studies printed in bi-directional mode

Use	Resolution	Passes	Direction	Dot Size	Print Speed (m ² /h)	Print Speed (ft ² /h)	Full Bed 24x36 (minutes)
Production	720x600	1	Bi	SML	14.86	160.00	2:15
Photo	720x900	3	Bi	SML	7.12	76.60	4:42
Fine Detail	720x1200	2	Bi	SML	9.69	104.35	3:27

NOTE: All time studies printed in bi-directional mode