

Data Sources for This Report

CoC: AZ-502 Phoenix/Mesa/Maricopa County Regional CoC

The CoC Profile includes data from Point-in-Time (PIT) Count, Housing Inventory Count (HIC), Annual Homeless Assessment Report (AHAR), and Homelessness Pulse report data entered into HUD's Homelessness Data Exchange (HDX). The data in this report is limited to data that has been finalized and determined to be useable. For each report type, all data sets that have been entered into the HDX are listed below, along with information that identifies whether or not the data is included in this report. Some fluctuations in numbers may be attributable to data that was excluded.

For CoCs which have merged, this report will only include data submitted under the current active CoC name and number. Data profile reports from merged CoCs may show significant increases in beds, units, and people, since only the data from the active CoC is being posted to the report.

Point-in-Time (PIT) Data

Limited to PIT data with a reporting status of 'Confirmed' dated 1/1/2009 or later. All 2009 PIT data was imported to the HDX from the final data set submitted to HUD.

PIT methodologies for sheltered and unsheltered counts are included starting with the year 2013.

Date	Reporting Status	Included in CoC Profile
1/27/2009	Confirmed	No
1/26/2010	Confirmed	No
1/25/2011	Confirmed	No
1/24/2012	Confirmed	No
1/29/2013	Confirmed	No
1/27/2014	Confirmed	Yes
2/23/2015	Confirmed	Yes
1/25/2016	Confirmed	Yes
1/23/2017	Confirmed	Yes

Housing Inventory Count (HIC) Data

Includes all HIC data with a reporting status of 'Confirmed'.

Data Sources for CoC: AZ-502 Phoenix/Mesa/Maricopa County Regional CoC

Date	Reporting Status	Included in CoC Profile
1/26/2008	Confirmed	No
1/26/2009	Confirmed	No
1/26/2010	Confirmed	No
1/25/2011	Confirmed	No
1/24/2012	Confirmed	No
1/29/2013	Confirmed	No
1/27/2014	Confirmed	Yes
2/23/2015	Confirmed	Yes
1/25/2016	Confirmed	Yes
1/23/2017	Confirmed	Yes

Annual Homeless Assessment Report (AHAR) Data

For CoCs with more than one AHAR site, data has been aggregated across all sites; counts of people who were served in more than one site may be duplicated. Only report sections marked 'Useable' below are included in this report. PSH report sections marked with an asterisk (*) below were not added to the AHAR until 2010. Only years in which AHAR data were submitted are listed below.

AHAR Acronyms

ES = Emergency Shelter

TH = Transitional Housing

PSH = Permanent Supportive Housing

IND = Individuals

FAM = Families

Data Sources for CoC: AZ-502 Phoenix/Mesa/Maricopa County Regional CoC

Maricopa County

Year	ES-IND	ES-FAM	TH-FAM	TH-IND	PSH-IND	PSH-IND
2007	TBD	TBD	TBD	TBD	*	*
2008	Useable	Not Useable	Useable	Not Useable	*	*
2009	Useable	Useable	Useable	Useable	*	*
2010	Useable	Useable	Useable	Useable	Useable	Useable
2011	Useable	Useable	Useable	Useable	Useable	Useable
2012	Not Useable	Useable	Not Useable	Not Useable	Not Useable	Not Useable
2013	Useable	Useable	Useable	Useable	Useable	Useable
2014	Useable	Useable	Useable	Useable	Useable	Useable
2015	Useable	Useable	Useable	Useable	Useable	Useable
2016	Useable	Useable	Useable	Useable	Useable	Useable
2017	TBD	TBD	TBD	TBD	TBD	TBD

Phoenix (AZ)

Year	ES-IND	ES-FAM	TH-FAM	TH-IND	PSH-IND	PSH-IND
2007	TBD	TBD	TBD	TBD	*	*
2008	Useable	Useable	Useable	Useable	*	*
2009	Useable	Useable	Useable	Useable	*	*
2010	Useable	Useable	Useable	Useable	Useable	Useable
2011	Useable	Useable	Useable	Useable	Useable	Useable
2012	Not Useable	Not Useable	Not Useable	Not Useable	Not Useable	Not Useable
2013	Useable	Useable	Useable	Useable	Useable	Useable
2014	Useable	Useable	Useable	Useable	Useable	Useable
2015	Useable	Useable	Useable	Useable	Useable	Useable
2016	Useable	Useable	Useable	Useable	Useable	Useable
2017	TBD	TBD	TBD	TBD	TBD	TBD

Data Sources for CoC: AZ-502 Phoenix/Mesa/Maricopa County Regional CoC

Pulse Data

Includes all Pulse data with a reporting status of 'Confirmed'. Only quarters for which Pulse data were submitted are listed below.

Date	Reporting Status	Included in CoC Profile
2010 Quarter 3	Confirmed	Yes
2010 Quarter 4	Confirmed	Yes
2011 Quarter 2	Confirmed	Yes
2011 Quarter 3	Confirmed	Yes
2011 Quarter 4	Confirmed	Yes

Point-in-Time Counts of People Who Are Homeless
 CoC: AZ-502 Phoenix/Mesa/Maricopa County Regional CoC

01/27/2009	01/26/2010	01/25/2011	01/24/2012
------------	------------	------------	------------

Sheltered People in Households...

With at Least One Adult and One Child	2,525	2,425	2,230	3,056
Under Age 18	*	*	*	*
Age 18 - 24	*	*	*	*
Over Age 24	*	*	*	*
Average household size	3.3	3.3	3.3	3.5
With Only Children	*	14	17	16
In one-child Households	*	*	*	*
In multi-child households	*	*	*	*
Average household size		1.0	1.0	1.0
Without Children	2,446	1,831	1,835	1,664
Age 18 - 24	*	*	*	*
Over Age 24	*	*	*	*
Average household size	1.0	1.0	1.0	1.0
All Sheltered People	4,971	4,270	4,082	4,736
Average household size	1.5	1.7	1.6	1.9

Unsheltered People in Households...

With at Least One Adult and One Child	230	142	8	*
Under Age 18	*	*	*	*
Age 18 - 24	*	*	*	*
Over Age 24	*	*	*	*
Average household size	6.2	3.0	2.7	

Point-in-Time Counts of People Who Are Homeless CoC: AZ-502 Phoenix/Mesa/Maricopa County Regional CoC

01/29/2013	01/27/2014	02/23/2015	01/25/2016	01/23/2017
------------	------------	------------	------------	------------

2,340	2,869	2,102	2,076	1,769
1,491	1,793	1,334	1,343	1,128
179	239	111	134	82
670	837	657	599	559
3.0	3.4	3.4	3.3	3.6
19	27	54	60	31
17	20	*	*	*
2	7	*	*	*
1.1	1.2	1.0	1.0	1.0
1,949	1,969	2,186	1,920	1,746
204	244	230	200	148
1,745	1,725	1,956	1,720	1,598
1.0	1.0	1.0	1.0	1.0
4,308	4,865	4,342	4,056	3,546
1.6	1.7	1.5	1.6	1.6

89	9	0	6	31
42	5	0	3	16
9	0	0	0	0
38	4	0	3	15
4.0	4.5	*	3.0	3.9

Point-in-Time Counts of People Who Are Homeless CoC: AZ-502 Phoenix/Mesa/Maricopa County Regional CoC

With Only Children	*	181	63	*
In one-child Households	*	*	*	*
In multi-child households	*	*	*	*
Average household size		1.0	1.0	
Without Children	2,688	2,406	1,678	*
Age 18 - 24	*	*	*	*
Over Age 24	*	*	*	*
Average household size	1.0	1.0	1.0	
All Unsheltered People	2,918	2,729	1,749	*
Average household size	1.1	1.0	1.0	

All People in Households...

With at Least One Adult and One Child	2,755	2,567	2,238	3,056
Under Age 18	*	*	*	*
Age 18 - 24	*	*	*	*
Over Age 24	*	*	*	*
Average household size	3.4	3.3	3.3	3.5
With Only Children	*	195	80	16
In one-child Households	*	*	*	*
In multi-child households	*	*	*	*
Average household size		1.0	1.0	1.0
Without Children	5,134	4,237	3,513	1,664
Age 18 - 24	*	*	*	*
Over Age 24	*	*	*	*
Average household size	1.0	1.0	1.0	1.0
All People	7,889	6,999	5,831	4,736

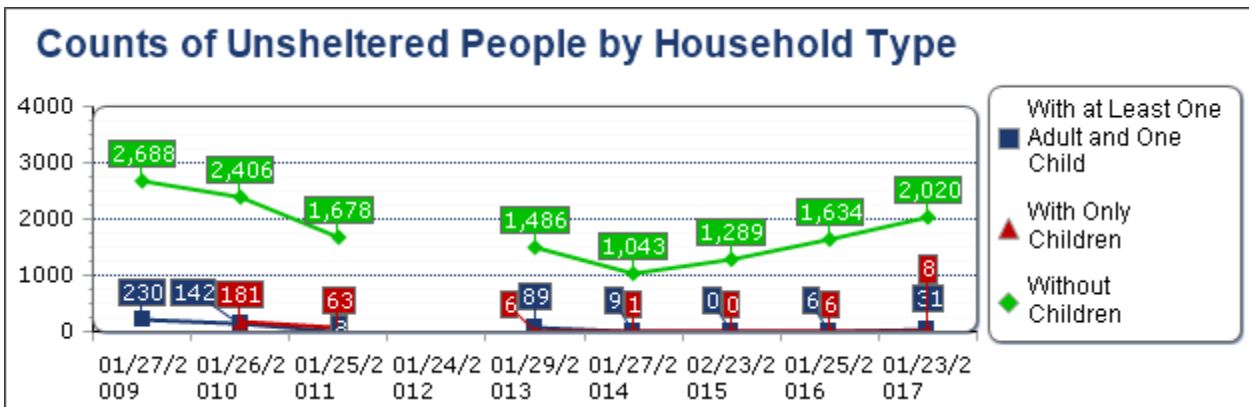
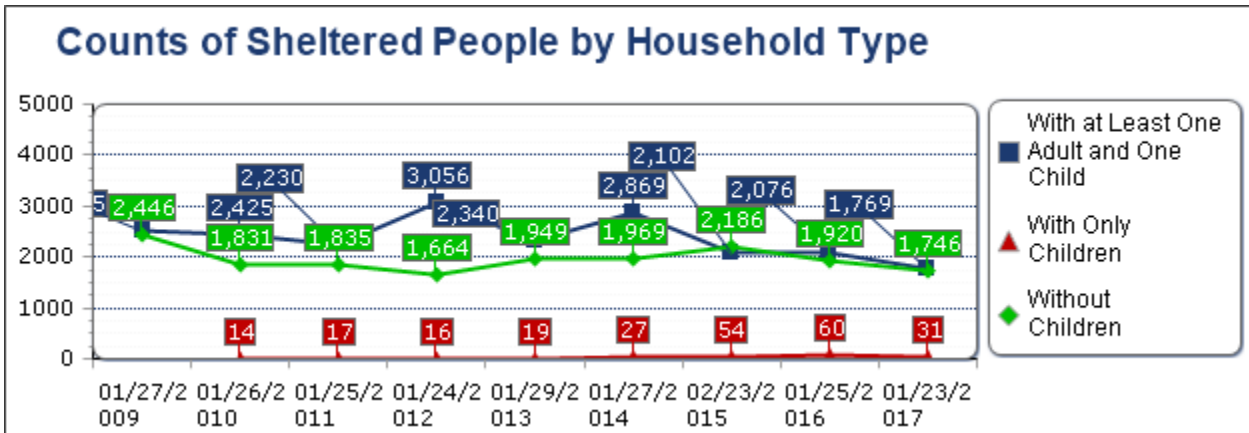
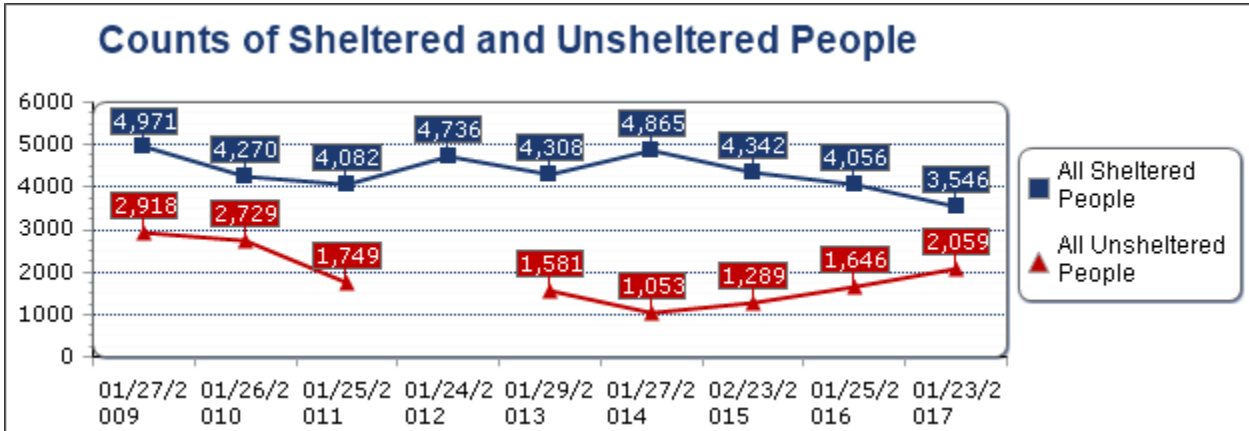
Point-in-Time Counts of People Who Are Homeless CoC: AZ-502 Phoenix/Mesa/Maricopa County Regional CoC

6	1	0	6	8
6	1	*	*	*
0	0	*	*	*
1.0	1.0	*	1.0	1.0
1,486	1,043	1,289	1,634	2,020
121	118	96	104	133
1,365	925	1,193	1,530	1,887
1.6	1.0	1.0	1.0	1.0
1,581	1,053	1,289	1,646	2,059
1.6	1.1	1.0	1.0	1.0

2,429	2,878	2,102	2,082	1,800
1,533	1,798	1,334	1,346	1,144
188	239	111	134	82
708	841	657	602	574
3.0	3.4	3.4	3.3	3.6
25	28	54	66	39
23	21	*	*	*
2	7	*	*	*
1.0	1.2	1.0	1.0	1.0
3,435	3,012	3,475	3,554	3,766
325	362	326	304	281
3,110	2,650	3,149	3,250	3,485
1.2	1.0	1.0	1.0	1.0
5,889	5,918	5,631	5,702	5,605

Average household size	1.1	1.0	1.0
-------------------------------	------------	------------	------------

*No data entered for this category on this date
 The age categories ("Under Age 18", etc.) were added in 2013.



Point-in-Time Counts of People Who Are Homeless CoC: AZ-502 Phoenix/Mesa/Maricopa County Regional CoC

1.6	1.1	1.0	1.0	1.0
------------	------------	------------	------------	------------

Point-in-Time Counts of People Who Are Homeless CoC: AZ-502 Phoenix/Mesa/Maricopa County Regional CoC

Households without children - Households with adults (18 or older) only. This includes households composed of unaccompanied adults and multiple adults.

Households with at least one adult and one child - Households with at least one adult (18 or older) and one child (under 18).

Households with only children - Households composed exclusively of persons under age 18, including unaccompanied children, adolescent parents and their children, adolescent siblings, or other household configurations composed only of children.

Sheltered - Sleeping in emergency shelters, transitional housing, and Safe Haven programs on the night designated for the count.

Unsheltered - Sleeping in a place not meant for human habitation, such as cars, parks, sidewalks abandoned buildings, or on the street.

PIT Subpopulations
 CoC: AZ-502 Phoenix/Mesa/Maricopa County Regional CoC

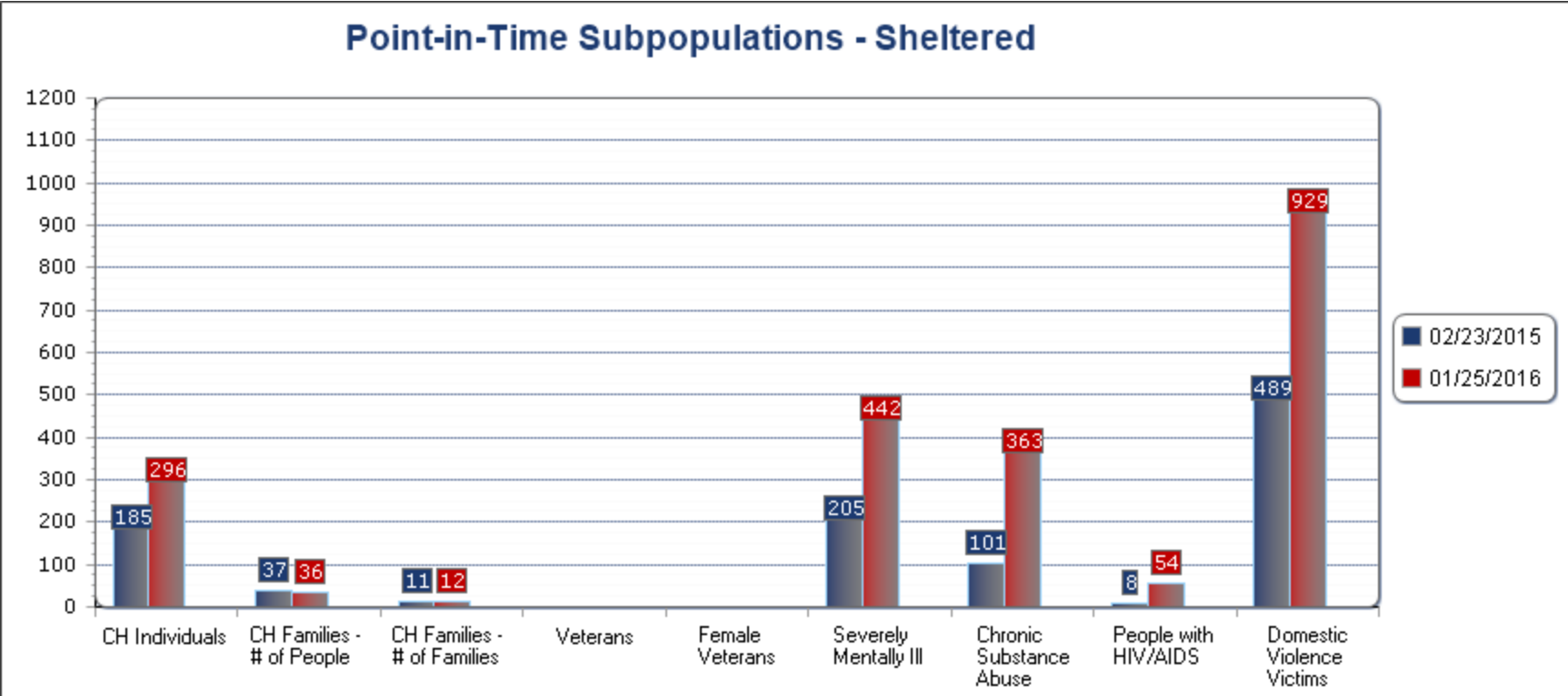
Population Type	02/23/2015			01/25/2016			01/23/2017		
	Sheltered	Unsheltered	All	Sheltered	Unsheltered	All	Sheltered	Unsheltered	All
Chronically Homeless Individuals	185	258	443	296	413	709	*	*	*
Chronically Homeless Families (Total Number of Families)	11	0	11	12	0	12	*	*	*
Chronically Homeless Families (Total Number of People in Household)	37	0	37	36	0	36	*	*	*
Veterans	*	*	*	*	*	*	*	*	*
Female Veterans	*	*	*	*	*	*	*	*	*
Severely Mentally Ill †	205	318	523	442	489	931	*	434	434
Chronic Substance Abuse †	101	319	420	363	547	910	*	476	476
People with HIV/AIDS †	8	5	13	54	14	68	*	12	12
Victims of Domestic Violence †	489	115	604	929	248	1,177	*	311	311

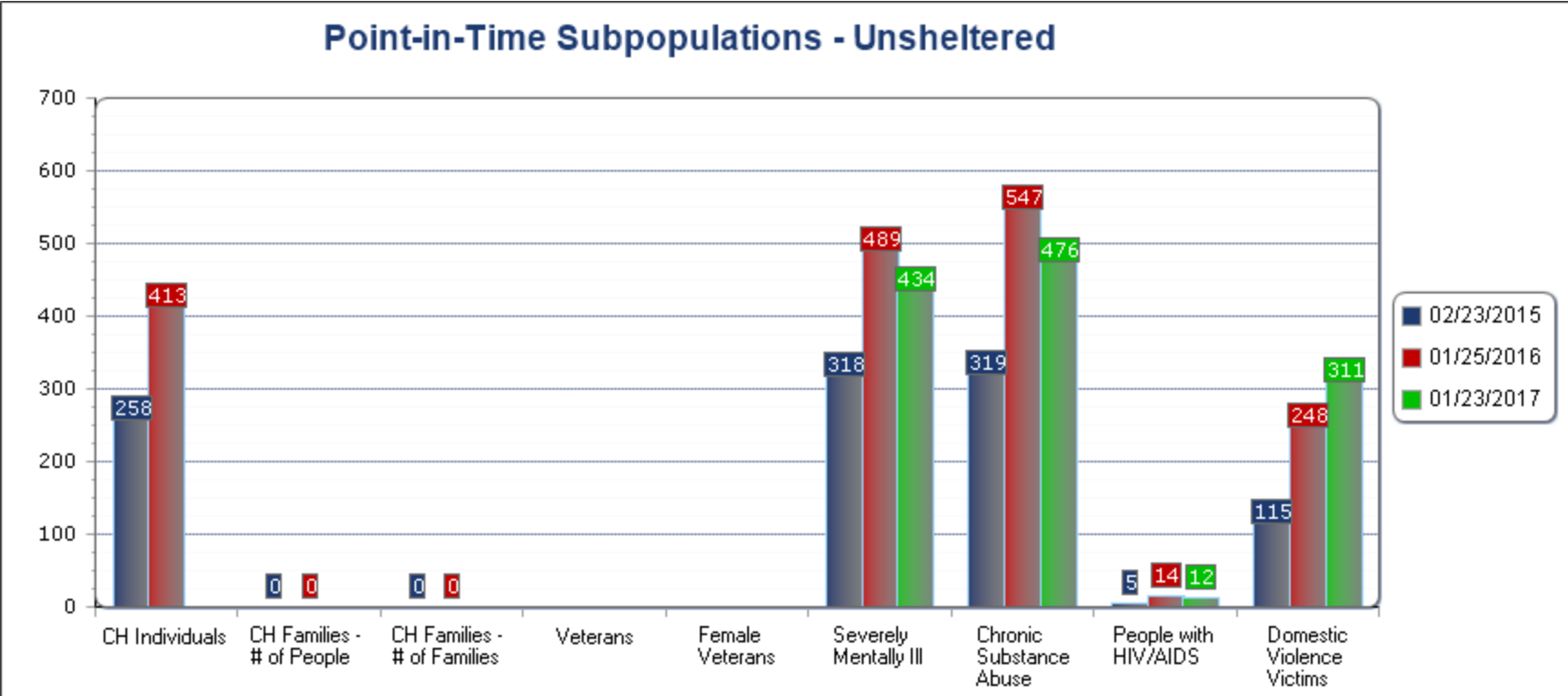
* No data entered for this category on this date

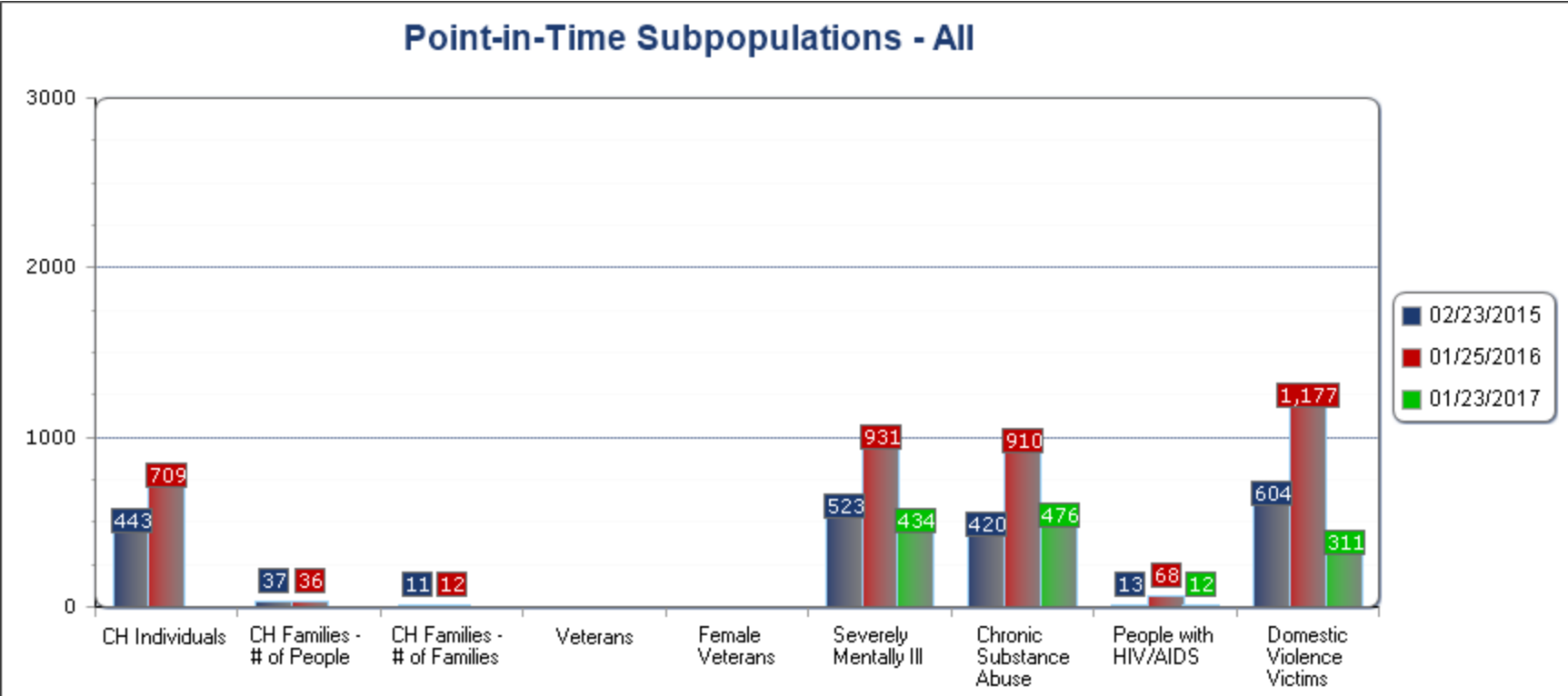
† Optional for unsheltered people

Starting in 2013:

- All subpopulations except victims of domestic violence are required.
- Unaccompanied children are no longer part of the subpopulations.
- Female veterans were added as a subpopulation.







Housing Inventory Count

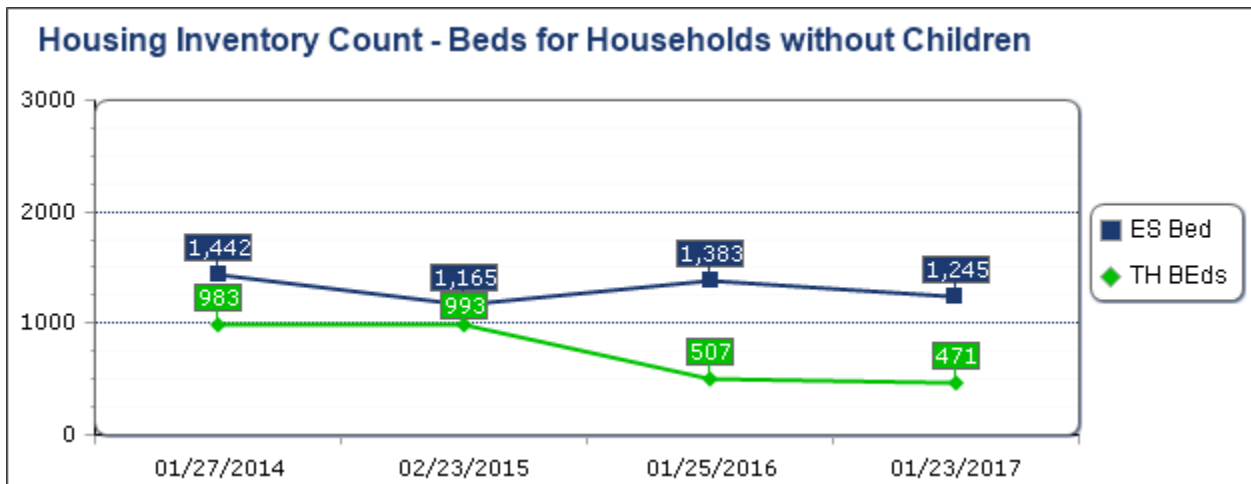
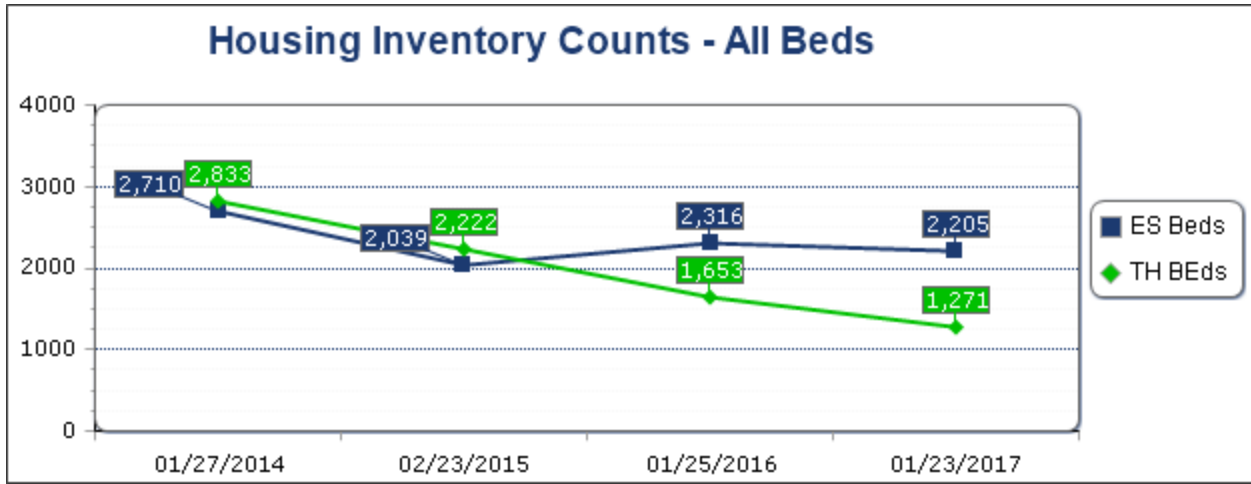
CoC: AZ-502 Phoenix/Mesa/Maricopa County Regional CoC

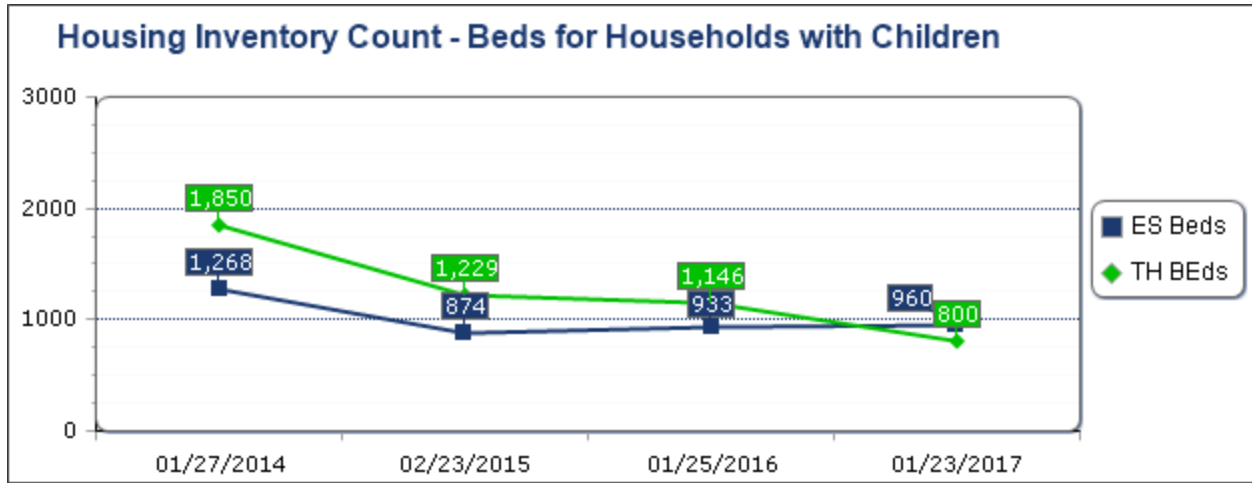
	01/27/2014 (2014)	02/23/2015 (2015)	01/25/2016 (2016)	01/23/2017 (2017)	change from last year	overall change
Emergency Shelter						
Units, Households with Children	421	316	283	261	-8 %	-38 %
Beds, Households with Children	1,268	874	933	960	3 %	-24 %
Beds, Households without Children	1,442	1,165	1,383	1,245	-10 %	-14 %
Emergency Shelter Beds	2,710	2,039	2,316	2,205	-5 %	-19 %
Transitional Housing						
Units, Households with Children	550	482	342	228	-33 %	-59 %
Beds, Households with Children	1,850	1,229	1,146	800	-30 %	-57 %
Beds, Households without Children	983	993	507	471	-7 %	-52 %
Transitional Housing Beds	2,833	2,222	1,653	1,271	-23 %	-55 %
Safe Haven						
Beds, Households without Children	25	25	25	21	-16 %	-16 %
Safe Haven Beds	25	25	25	21	-16 %	-16 %
Permanent Supportive Housing						
Units, Households with Children	*	*	*	*	*	*
Beds, Households with Children	*	*	*	*	*	*
Beds, Households without Children	*	*	*	*	*	*
Permanent Supportive Housing Beds	*	*	*	*	*	*
HPRP						
Units, Households with Children	*	*	*	*	*	*
Beds, Households with Children	*	*	*	*	*	*
Beds, Households without Children	*	*	*	*	*	*
HPRP Beds	*	*	*	*	*	*
RRH						
Units, Households with Children	*	*	*	*	*	*

Housing Inventory Count CoC: AZ-502 Phoenix/Mesa/Maricopa County Regional CoC

Beds, Households with Children	*	*	*	*	*	*
Beds, Households without Children	*	*	*	*	*	*
RRH Beds	*	*	*	*	*	*

*No data entered for this category on this date
 In 2013, HPRP was discontinued and RRH was added.





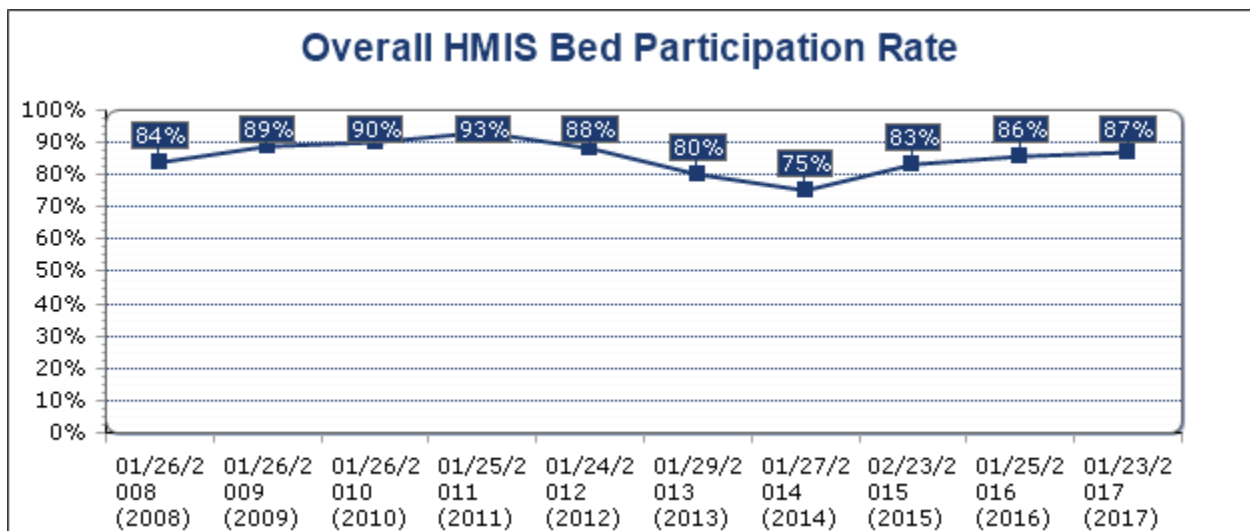
HPRP was a time limited program and these beds are not included in the charts for annual comparison purposes

Housing Inventory Count HMIS Bed Participation Rates CoC: AZ-502 Phoenix/Mesa/Maricopa County Regional CoC

HMIS participation rates have been corrected and no longer include domestic violence beds in the HMIS bed participation rate.

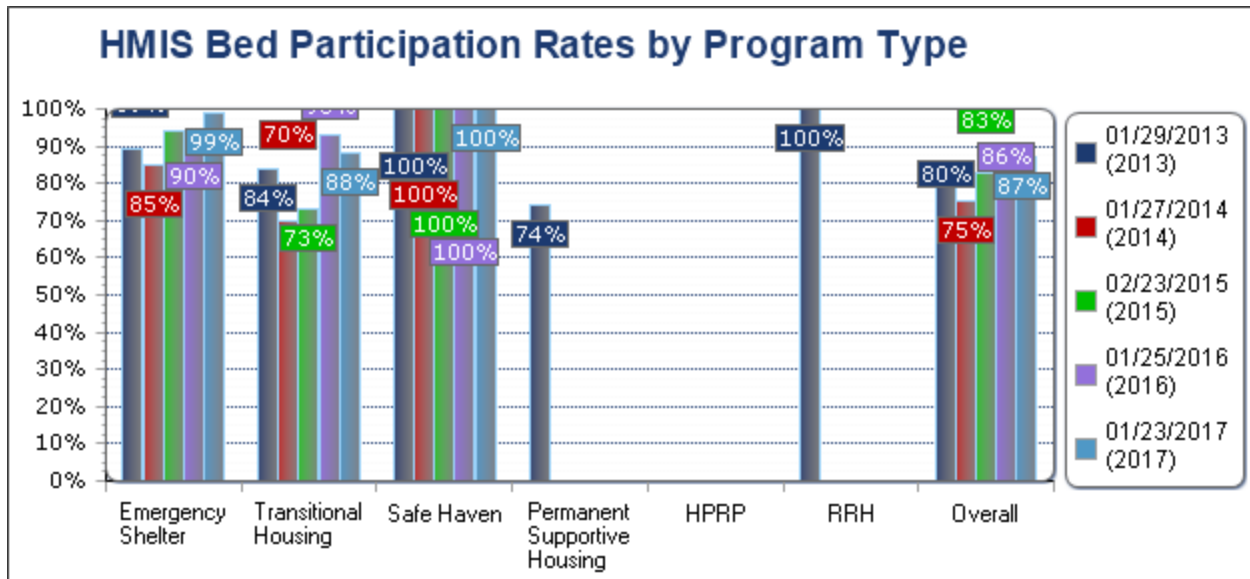
	01/26/2008 (2008)	01/26/2009 (2009)	01/26/2010 (2010)	01/25/2011 (2011)
Emergency Shelter	67 %	73 %	73 %	74 %
Transitional Housing	82 %	92 %	93 %	92 %
Safe Haven	100 %	100 %	100 %	100 %
Permanent Supportive Housing	99 %	98 %	100 %	98 %
HPRP	*	*	100 %	100 %
RRH	*	*	*	*
Overall	84 %	89 %	90 %	93 %

HMIS participation rates are based on year-round beds and do not include seasonal or overflow beds.



Housing Inventory Count HMIS Bed Participation Rates CoC: AZ-502 Phoenix/Mesa/Maricopa County Regional CoC

01/24/2012 (2012)	01/29/2013 (2013)	01/27/2014 (2014)	02/23/2015 (2015)	01/25/2016 (2016)	01/23/2017 (2017)
92 %	89 %	85 %	94 %	90 %	99 %
83 %	84 %	70 %	73 %	93 %	88 %
100 %	100 %	100 %	100 %	100 %	100 %
81 %	74 %	73 %	78 %	77 %	79 %
100 %	*	*	*	*	*
*	100 %	*	100 %	100 %	100 %
88 %	80 %	75 %	83 %	86 %	87 %

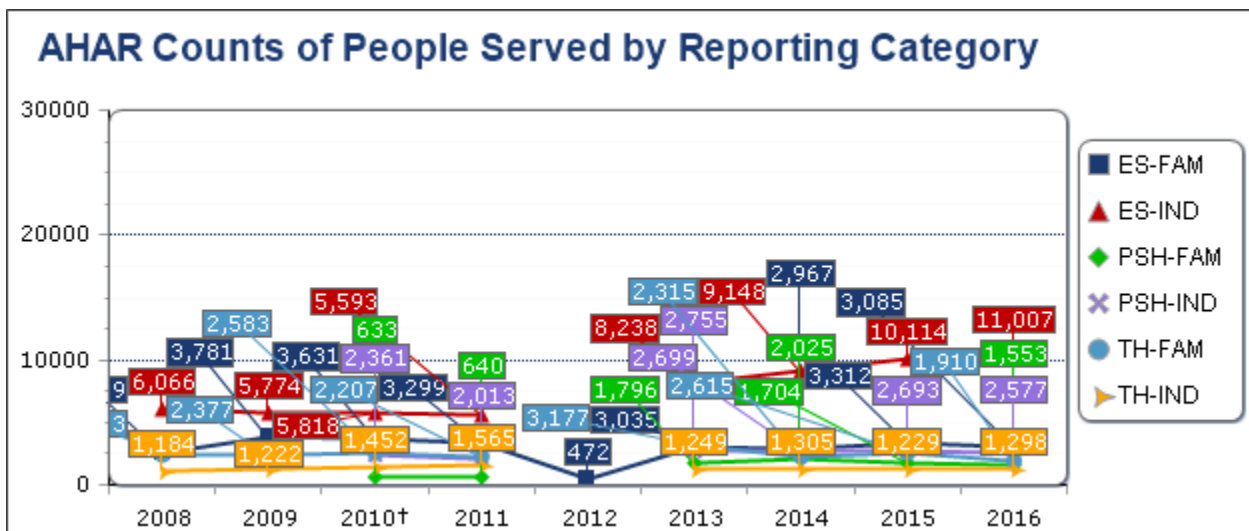


Annual Homeless Assessment Report Counts
 CoC: AZ-502 Phoenix/Mesa/Maricopa County Regional CoC
 AHAR Counts of People Served by Reporting Category

Reporting Category	2008	2009	2010†	2011	2012
Individuals in Emergency Shelter	6,066	5,774	5,818	5,593	*
Individuals in Transitional Housing	1,184	1,222	1,452	1,565	*
Individuals in Permanent Supportive Housing	*	*	2,361	2,013	*
Families in Emergency Shelter	2,629	3,781	3,631	3,299	472
Families in Transitional Housing	2,453	2,377	2,583	2,207	*
Families in Permanent Supportive Housing	*	*	633	640	*

† First year PSH data included in AHAR.

*No data entered for this year or status is not Confirmed and Usable.



Annual Homeless Assessment Report Counts CoC: AZ-502 Phoenix/Mesa/Maricopa County Regional

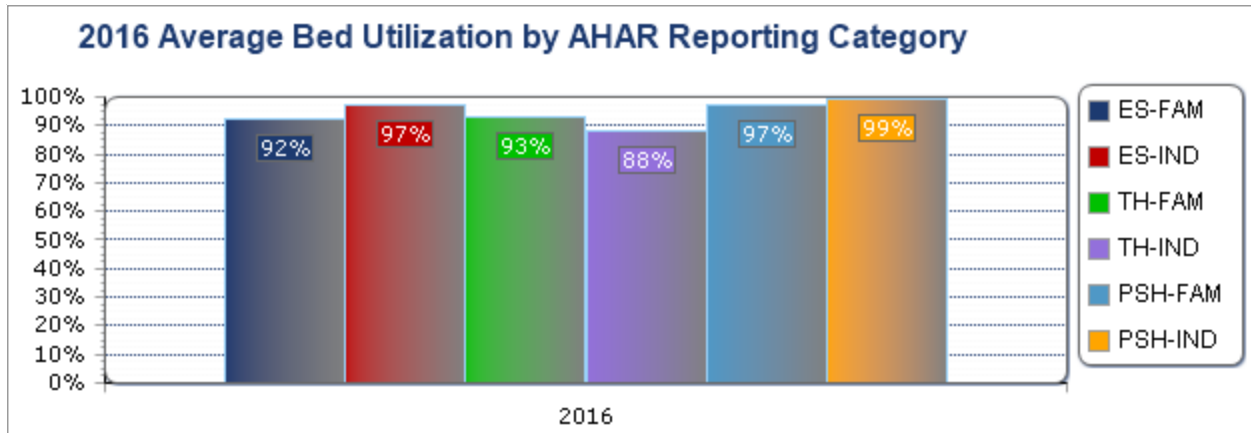
2013	2014	2015	2016
8,238	9,148	10,114	11,007
1,249	1,305	1,229	1,298
2,755	2,699	2,693	2,577
3,035	2,967	3,312	3,085
3,177	2,315	2,615	1,910
1,796	2,025	1,704	1,553

Annual Homeless Assessment Report Counts CoC: AZ-502 Phoenix/Mesa/Maricopa County Regional

Reporting Category	2008	2009	2010†	2011	2012
Individuals in Emergency Shelter	99 %	96 %	91 %	99 %	*
Individuals in Transitional Housing	96 %	83 %	107 %	122 %	*
Individuals in Permanent Supportive Housing	*	*	100 %	90 %	*
Families in Emergency Shelter	93 %	88 %	82 %	81 %	100 %
Families in Transitional Housing	72 %	76 %	89 %	76 %	*
Families in Permanent Supportive Housing	*	*	63 %	56 %	*

† First year PSH data included in AHAR.

*No data entered for this year or status is not Confirmed and Usable.



Annual Homeless Assessment Report Counts CoC: AZ-502 Phoenix/Mesa/Maricopa County Regional
Average Bed Utilization by AHAR Reporting Category

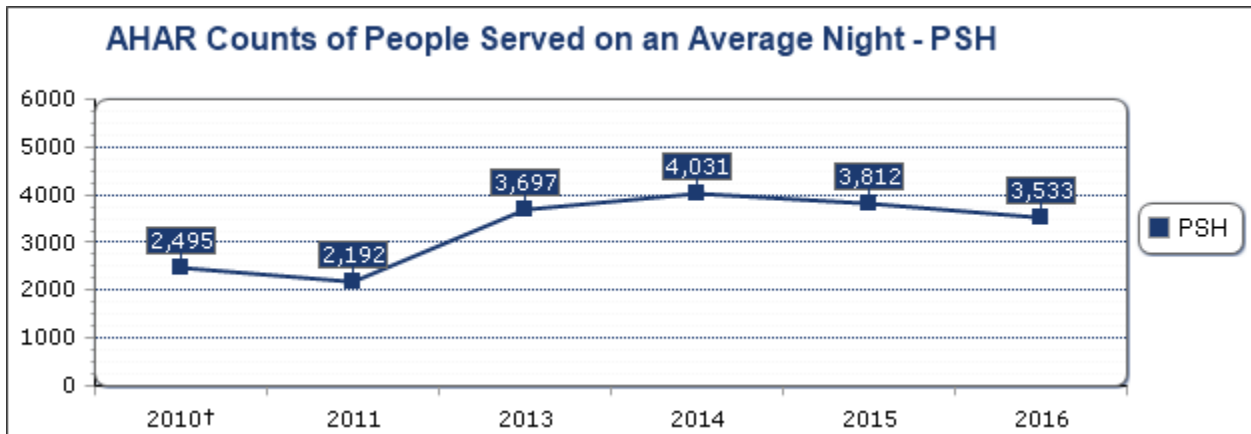
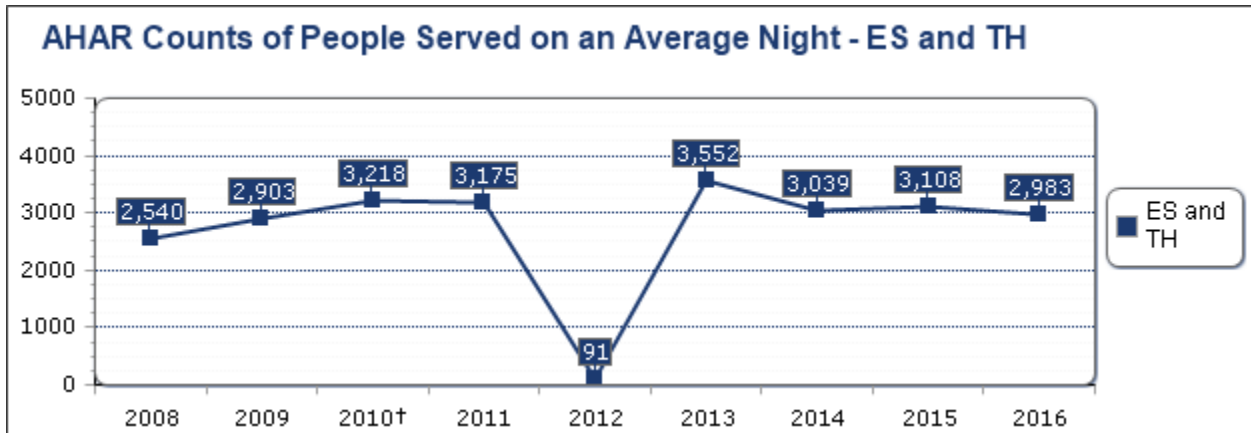
2013	2014	2015	2016
92 %	99 %	105 %	97 %
72 %	87 %	90 %	88 %
96 %	99 %	100 %	99 %
94 %	90 %	102 %	92 %
77 %	72 %	98 %	93 %
98 %	87 %	102 %	97 %

Annual Homeless Assessment Report Counts CoC: AZ-502 Phoenix/Mesa/Maricopa County Regional

Reporting Category	2008	2009	2010†	2011	2012
Individuals in Emergency Shelter	738	733	696	769	*
Individuals in Transitional Housing	401	513	659	784	*
Individuals in Permanent Supportive Housing	*	*	1,960	1,657	*
Families in Emergency Shelter	280	545	541	505	91
Families in Transitional Housing	1,121	1,112	1,322	1,117	*
Families in Permanent Supportive Housing	*	*	535	535	*
Total	2,540	2,903	5,713	5,367	91

† First year PSH data included in AHAR.

*No data entered for this year or status is not Confirmed and Usable.



Annual Homeless Assessment Report Counts CoC: AZ-502 Phoenix/Mesa/Maricopa County Regional
AHAR Counts of People Served on an Average Night

2013	2014	2015	2016
965	961	1,093	1,164
542	404	424	358
2,196	2,378	2,395	2,185
561	597	593	542
1,484	1,077	998	919
1,501	1,653	1,417	1,348
7,249	7,070	6,920	6,516

AHAR Living Situation Prior to Program Entry CoC: AZ-502 Phoenix/Mesa/Maricopa County Regional CoC

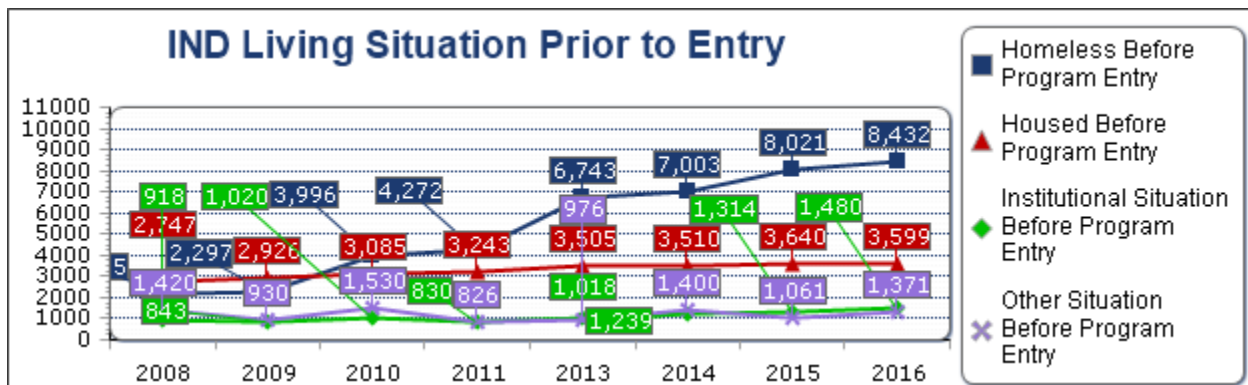
Individuals Living Situation Prior to Program Entry

This table includes data about living situation prior to program entry (where persons spent last night) as reported in the AHAR for individuals in emergency shelter, transitional housing and permanent supportive housing. Individuals included in this table are people in households comprised of only adults or only persons age 17 or under, including unaccompanied children, adolescent parents and their children, adolescent siblings, or other household configurations composed only of children.

Living Situation	2008	2009	2010†	2011	2013
Place not meant for habitation	847	950	1,711	1,949	3,485
Emergency Shelter, Safe Haven, or Transitional Housing	1,318	1,347	2,285	2,323	3,258
Homeless Before Program Entry	2,165	2,297	3,996	4,272	6,743
Staying with family/friends	1,621	1,658	2,136	2,254	2,536
Rented/owned	1,126	1,268	949	989	969
Housed Before Program Entry	2,747	2,926	3,085	3,243	3,505
Psychiatric facility, substance abuse center, or hospital	298	267	398	358	598
Jail, prison, or juvenile detention	575	520	591	438	376
Foster care home	45	56	31	34	44
Institutional Situation Before Program Entry	918	843	1,020	830	1,018
Hotel or motel with no voucher	273	298	288	272	451
Other	347	446	562	387	237
Information missing	800	186	680	167	288
Other Situation Before Program Entry	1,420	930	1,530	826	976

†First year PSH data included in AHAR.

*No data entered for this year or status is not Confirmed and Usable.



AHAR Living Situation Prior to Program Entry CoC: AZ-502 Phoenix/Mesa/Maricopa County Regional

2014	2015	2016
3,473	4,688	5,197
3,530	3,333	3,235
7,003	8,021	8,432
2,511	2,684	2,748
999	956	851
3,510	3,640	3,599
735	795	941
466	452	492
38	67	47
1,239	1,314	1,480
509	608	734
537	378	382
354	75	255
1,400	1,061	1,371

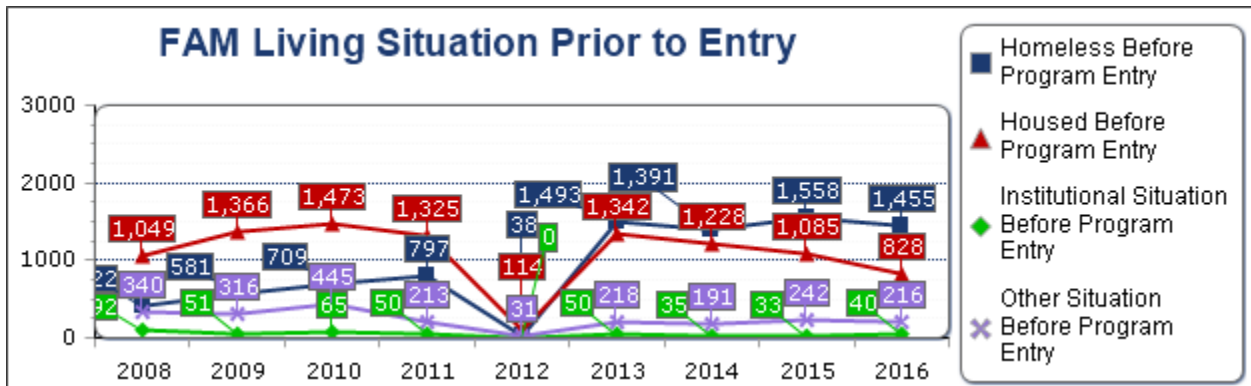
Family Living Situation Prior to Program Entry

This table includes data about living situation prior to program entry (where persons spent last night) as reported in the AHAR for families in emergency shelter, transitional housing and permanent supportive housing. People included in this table are persons in households with at least one adult and one child.

Living Situation	2008	2009	2010†	2011	2012
Place not meant for habitation	77	83	158	272	9
Emergency Shelter, Safe Haven, or Transitional Housing	345	498	551	525	29
Homeless Before Program Entry	422	581	709	797	38
Staying with family/friends	811	1,029	1,163	1,053	102
Rented/owned	238	337	310	272	12
Housed Before Program Entry	1,049	1,366	1,473	1,325	114
Psychiatric facility, substance abuse center, or hospital	65	36	46	37	0
Jail, prison, or juvenile detention	23	8	15	9	0
Foster care home	4	7	4	4	0
Institutional Situation Before Program Entry	92	51	65	50	0
Hotel or motel with no voucher	210	199	188	142	24
Other	96	74	131	50	7
Information missing	34	43	126	21	0
Other Situation Before Program Entry	340	316	445	213	31

†First year PSH data included in AHAR.

*No data entered for this year or status is not Confirmed and Usable.



AHAR Living Situation Prior to Program Entry CoC: AZ-502 Phoenix/Mesa/Maricopa County Regional

2013	2014	2015	2016
350	360	430	464
1,143	1,031	1,128	991
1,493	1,391	1,558	1,455
985	913	877	700
357	315	208	128
1,342	1,228	1,085	828
33	28	22	34
14	7	9	6
3	0	2	0
50	35	33	40
161	152	214	197
39	19	28	19
18	20	0	0
218	191	242	216

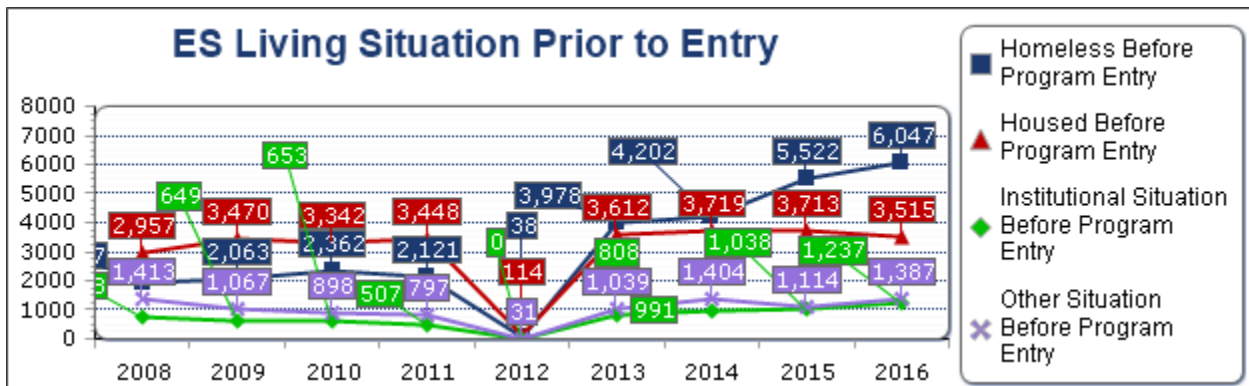
AHAR Living Situation Prior to Program Entry CoC: AZ-502 Phoenix/Mesa/Maricopa County Regional
Living Situation Prior to Program Entry for People Staying in Emergency Shelter

This table includes data about where people were staying the night prior to program entry for all persons served in emergency shelter during the AHAR reporting period. Data is reported for both individuals and families.

Living Situation	2008	2009	2010†	2011	2012
Place not meant for habitation	832	952	1,094	1,008	9
Emergency Shelter, Safe Haven, or Transitional Housing	1,115	1,111	1,268	1,113	29
Homeless Before Program Entry	1,947	2,063	2,362	2,121	38
Staying with family/friends	1,804	2,134	2,393	2,439	102
Rented/owned	1,153	1,336	949	1,009	12
Housed Before Program Entry	2,957	3,470	3,342	3,448	114
Psychiatric facility, substance abuse center, or hospital	246	210	257	246	0
Jail, prison, or juvenile detention	501	394	377	255	0
Foster care home	31	45	19	6	0
Institutional Situation Before Program Entry	778	649	653	507	0
Hotel or motel with no voucher	451	447	407	355	24
Other	385	476	405	331	7
Information missing	577	144	86	111	0
Other Situation Before Program Entry	1,413	1,067	898	797	31

†First year PSH data included in AHAR.

*No data entered for this year or status is not Confirmed and Usable.



AHAR Living Situation Prior to Program Entry CoC: AZ-502 Phoenix/Mesa/Maricopa County Regional

2013	2014	2015	2016
2,326	2,274	3,577	4,014
1,652	1,928	1,945	2,033
3,978	4,202	5,522	6,047
2,653	2,691	2,776	2,768
959	1,028	937	747
3,612	3,719	3,713	3,515
482	580	616	758
315	386	369	435
11	25	53	44
808	991	1,038	1,237
523	557	684	807
235	496	358	332
281	351	72	248
1,039	1,404	1,114	1,387

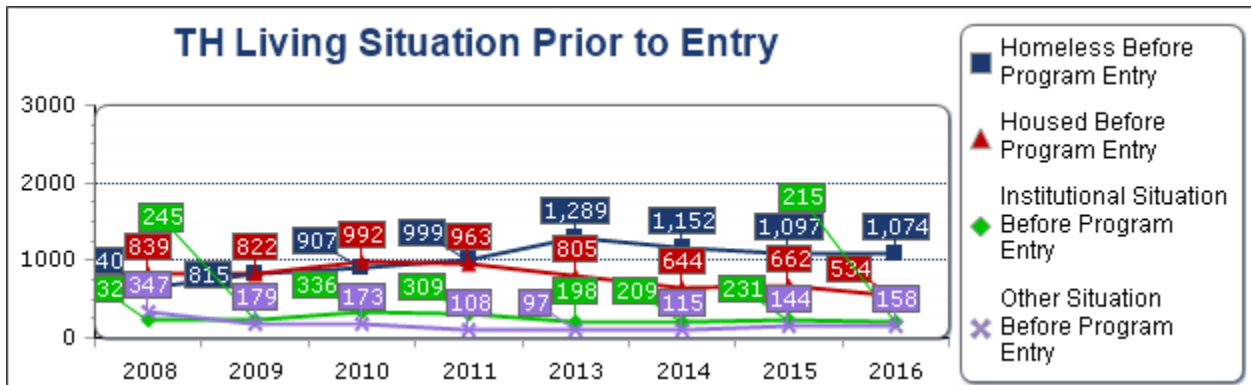
Living Situation Prior to Program Entry for People Living in Temporary Housing

This table includes data about where people were staying the night prior to program entry for all persons served in temporary housing during the AHAR reporting period. Data is reported for both individuals and families.

Living Situation	2008	2009	2010†	2011	2013
Place not meant for habitation	92	81	77	107	182
Emergency Shelter, Safe Haven, or Transitional Housing	548	734	830	892	1,107
Homeless Before Program Entry	640	815	907	999	1,289
Staying with family/friends	628	553	740	745	605
Rented/owned	211	269	252	218	200
Housed Before Program Entry	839	822	992	963	805
Psychiatric facility, substance abuse center, or hospital	117	93	107	90	98
Jail, prison, or juvenile detention	97	134	215	187	69
Foster care home	18	18	14	32	31
Institutional Situation Before Program Entry	232	245	336	309	198
Hotel or motel with no voucher	32	50	58	55	67
Other	58	44	61	31	25
Information missing	257	85	54	22	5
Other Situation Before Program Entry	347	179	173	108	97

†First year PSH data included in AHAR.

*No data entered for this year or status is not Confirmed and Usable.



AHAR Living Situation Prior to Program Entry CoC: AZ-502 Phoenix/Mesa/Maricopa County Regional

2014	2015	2016
225	237	375
927	860	699
1,152	1,097	1,074
518	537	425
126	125	109
644	662	534
118	138	158
79	78	55
12	15	2
209	231	215
80	117	103
32	27	52
3	0	3
115	144	158

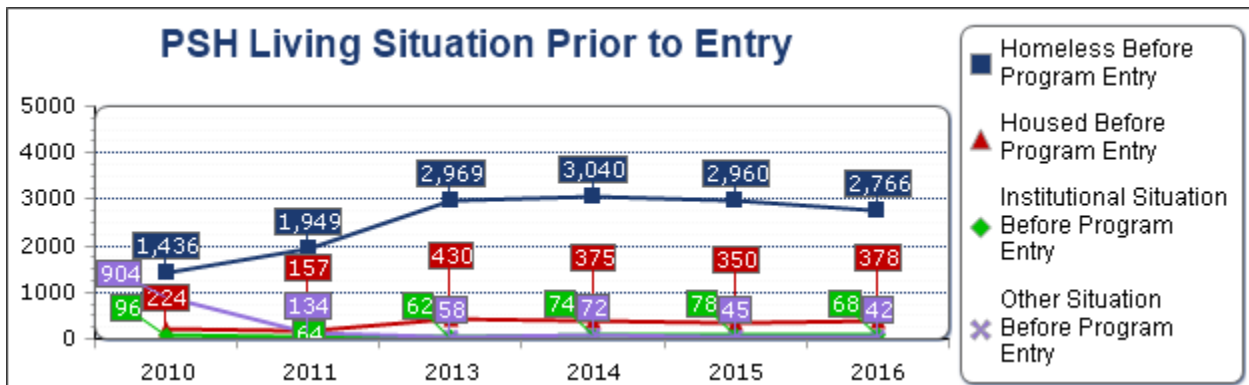
AHAR Living Situation Prior to Program Entry CoC: AZ-502 Phoenix/Mesa/Maricopa County Regional
 Living Situation Prior to Program Entry for People Living in Permanent Supportive Housing

This table includes data about where people were staying the night prior to program entry for all persons served in permanent supportive housing during the AHAR reporting period. Data is reported for both individuals and families.

Living Situation	2010†	2011	2013	2014	2015
Place not meant for habitation	698	1,106	1,327	1,334	1,304
Emergency Shelter, Safe Haven, or Transitional Housing	738	843	1,642	1,706	1,656
Homeless Before Program Entry	1,436	1,949	2,969	3,040	2,960
Staying with family/friends	166	123	263	215	248
Rented/owned	58	34	167	160	102
Housed Before Program Entry	224	157	430	375	350
Psychiatric facility, substance abuse center, or hospital	80	59	51	65	63
Jail, prison, or juvenile detention	14	5	6	8	14
Foster care home	2	0	5	1	1
Institutional Situation Before Program Entry	96	64	62	74	78
Hotel or motel with no voucher	11	4	22	24	21
Other	227	75	16	28	21
Information missing	666	55	20	20	3
Other Situation Before Program Entry	904	134	58	72	45

†First year PSH data included in AHAR.

*No data entered for this year or status is not Confirmed and Usable.



AHAR Living Situation Prior to Program Entry CoC: AZ-502 Phoenix/Mesa/Maricopa County Regional

2016
1,272
1,494
2,766
255
123
378
59
8
1
68
21
17
4
42

AHAR Destination of People Exiting Permanent Supportive Housing CoC: AZ-502 Phoenix/Mesa/Maricopa County Regional CoC

Exit Destination for Families in Permanent Supportive Housing

This table includes data about housing destinations of people in households with at least one adult and one child who exited permanent supportive housing during the AHAR reporting period. Note that prior to 2011, There was no distinction between staying with family/friends permanently or temporarily. All family/friends destinations prior to 2011 are grouped in the temporary category.

Destination	2010	2011	2013	2014	2015
Permanent supportive housing	0	0	7	0	4
Rental by client	4	0	50	135	91
Staying with family/friends (permanent)	*	9	63	64	72
Owned by client	0	0	2	2	8
Permanent housing destination subtotal	4	9	122	201	175
Emergency shelter	0	0	6	11	25
Transitional housing	3	0	0	7	2
Staying with family/friends (temporary)	3	0	6	9	6
Place not meant for habitation	0	0	0	1	6
Safe Haven	*	0	0	3	0
Hotel or motel (no voucher)	0	0	4	0	2
Temporary housing destination subtotal	6	0	16	31	41
Psychiatric facility	0	0	0	0	0
Substance abuse treatment or detox	0	0	0	8	3
Hospital (non-psychiatric)	0	0	1	0	0
Jail, prison, or juvenile detention	3	0	1	3	3
Foster care home	0	0	15	18	6
Institutional housing destination subtotal	3	0	17	29	12
Deceased	*	2	1	3	6

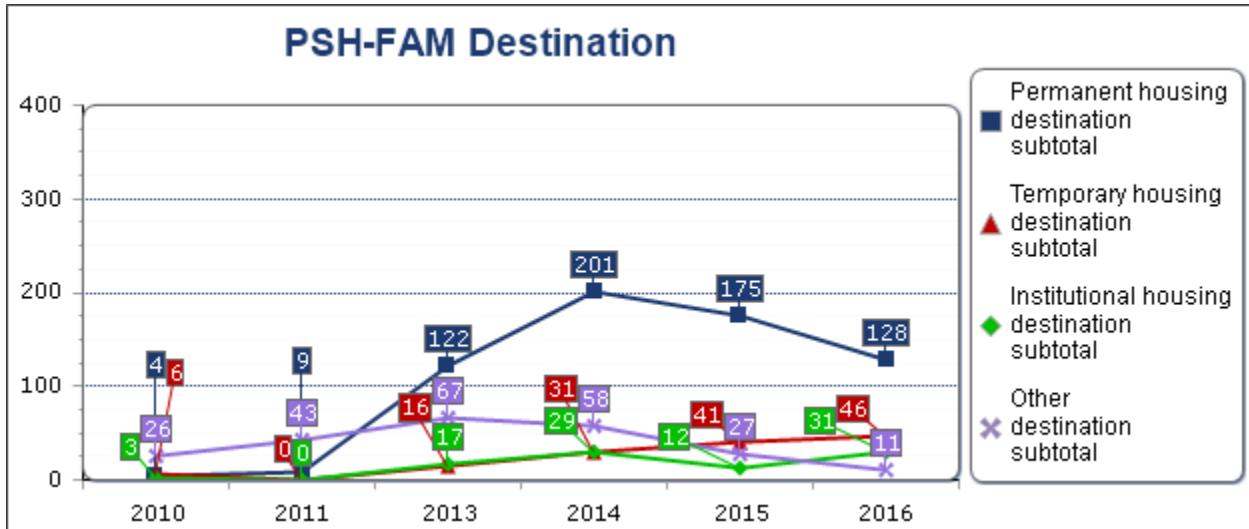
AHAR Destination of People Exiting Permanent Supportive Housing CoC: AZ-502

2016
1
60
67
0
128
6
4
24
8
0
4
46
1
1
0
11
18
31
0

AHAR Destination of People Exiting Permanent Supportive Housing CoC: AZ-502

Other living arrangement	1	4	4	0	3
Missing this information	25	37	62	55	18
Other destination subtotal	26	43	67	58	27

*No data entered or status is not Confirmed and Usable.



Exit Destination for Individuals in Permanent Supportive Housing

This table includes data about housing destinations of people in households comprised of only adults or only children who exited permanent supportive housing during the AHAR reporting period. Note that prior to 2011, There was no distinction between staying with family/friends permanently or temporarily. All family/friends destinations prior to 2011 are grouped in the temporary category.

Destination	2010	2011	2013	2014	2015
Permanent supportive housing	10	12	17	16	14
Rental by client	36	45	99	87	117
Staying with family/friends (permanent)	*	38	67	50	66
Owned by client	5	4	2	4	4
Permanent housing destination subtotal	51	99	185	157	201
Emergency shelter	0	0	11	23	23
Transitional housing	9	7	4	3	4

AHAR Destination of People Exiting Permanent Supportive Housing CoC: AZ-502

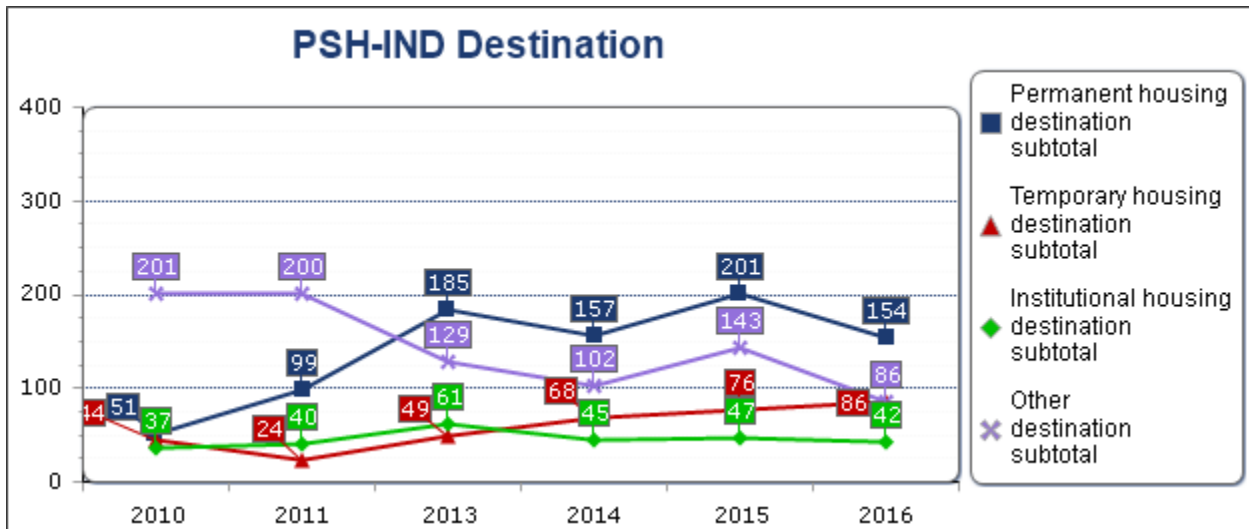
5
6
11

2016
6
95
48
5
154
38
2

AHAR Destination of People Exiting Permanent Supportive Housing CoC: AZ-502

Staying with family/friends (temporary)	33	14	15	23	33
Place not meant for habitation	1	2	16	17	14
Safe Haven	*	0	1	0	0
Hotel or motel (no voucher)	1	1	2	2	2
Temporary housing destination subtotal	44	24	49	68	76
Psychiatric facility	1	1	13	10	11
Substance abuse treatment or detox	3	2	5	6	5
Hospital (non-psychiatric)	3	4	6	5	5
Jail, prison, or juvenile detention	30	32	37	24	26
Foster care home	0	1	0	0	0
Institutional housing destination subtotal	37	40	61	45	47
Deceased	*	36	34	30	51
Other living arrangement	38	74	7	14	11
Missing this information	163	90	88	58	81
Other destination subtotal	201	200	129	102	143

*No data entered or status is not Confirmed and Usable.



AHAR Destination of People Exiting Permanent Supportive Housing CoC: AZ-502

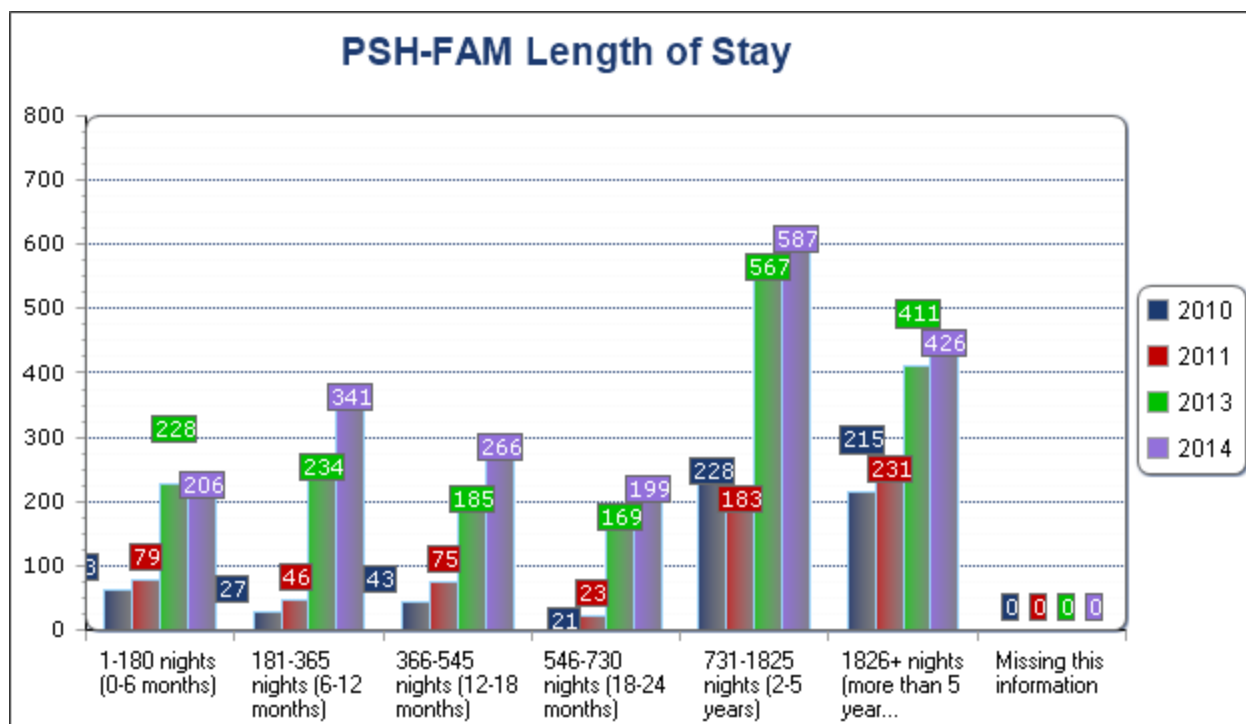
12
33
0
1
86
4
3
7
28
0
42
48
15
23
86

AHAR Length of Stay in Permanent Supportive Housing CoC: AZ-502 Phoenix/Mesa/Maricopa County Regional CoC

Length of Stay for Families in Permanent Supportive Housing

This table includes data about total length of stay in permanent supportive housing for people in households with at least one adult and one child during the AHAR reporting period.

Length of Stay	2010	2011	2013	2014	2015
1-180 nights (0-6 months)	63	79	228	206	180
181-365 nights (6-12 months)	27	46	234	341	235
366-545 nights (12-18 months)	43	75	185	266	186
546-730 nights (18-24 months)	21	23	169	199	221
731-1825 nights (2-5 years)	228	183	567	587	503
1826+ nights (more than 5 years)	215	231	411	426	379
Missing this information	0	0	0	0	0



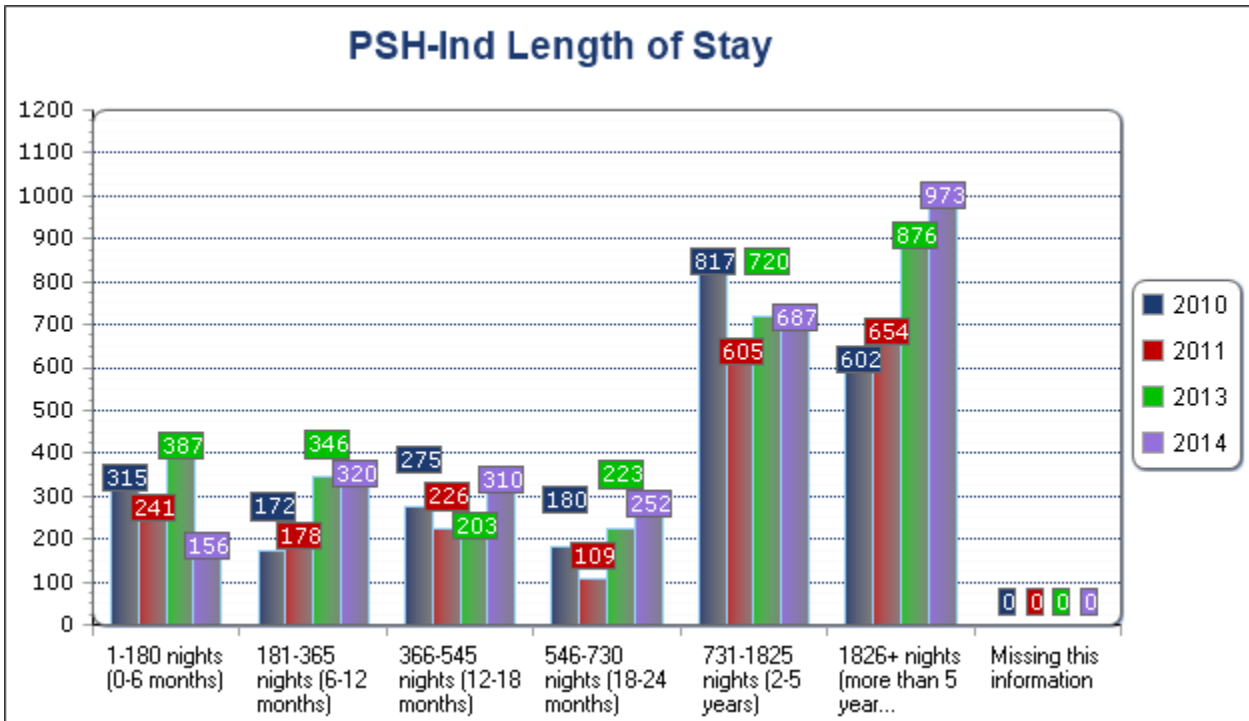
AHAR Length of Stay in Permanent Supportive Housing CoC: AZ-502 Phoenix/Mesa/Maricopa County

2016
104
129
177
131
624
388
0

Length of Stay for Individuals in Permanent Supportive Housing

This table includes data about total length of stay in permanent supportive housing for people in households comprised of only adults or only children during the AHAR reporting period.

Length of Stay	2010	2011	2013	2014	2015
1-180 nights (0-6 months)	315	241	387	156	177
181-365 nights (6-12 months)	172	178	346	320	237
366-545 nights (12-18 months)	275	226	203	310	181
546-730 nights (18-24 months)	180	109	223	252	234
731-1825 nights (2-5 years)	817	605	720	687	861
1826+ nights (more than 5 years)	602	654	876	973	1,003
Missing this information	0	0	0	0	0



AHAR Length of Stay in Permanent Supportive Housing CoC: AZ-502 Phoenix/Mesa/Maricopa County

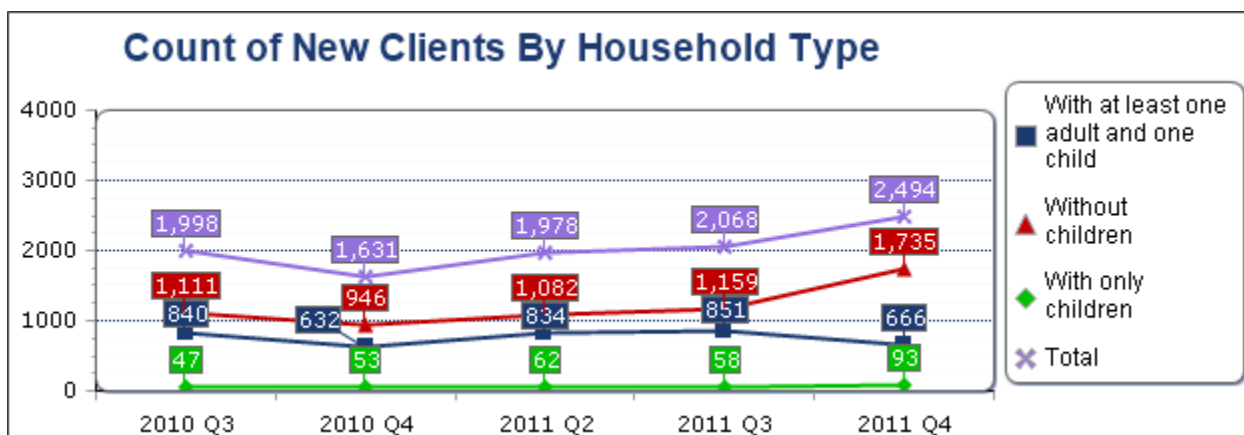
2016
233
184
177
158
827
998
0

Pulse Counts of New Clients CoC: AZ-502 Phoenix/Mesa/Maricopa County Regional CoC

Pulse Counts of New Clients

This table includes data on all persons who entered an emergency shelter or transitional housing program during the quarter and had not received any homeless residential services in the 15 months prior to the client's first program entry date during the quarter. Q1 runs from January through March, Q2 from April through June, Q3 from July through August, and Q4 from September through December.

Quarter	All people in households...			Total
	with at least one adult and one child	without children	with only children	
2010 Quarter 3	840	1,111	47	1,998
2010 Quarter 4	632	946	53	1,631
2011 Quarter 2	834	1,082	62	1,978
2011 Quarter 3	851	1,159	58	2,068
2011 Quarter 4	666	1,735	93	2,494



Pulse Counts of New Households

This table includes data on households entering an emergency shelter or transitional housing program during the quarter which included at least one person who had not received any homeless residential services in the 15 months prior to his/her first program entry date during the quarter. Q1 runs from January through March, Q2 from April through June, Q3 from July through August, and Q4 from September through December.

Pulse Counts of New Clients CoC: AZ-502 Phoenix/Mesa/Maricopa County Regional CoC

Quarter	All households...			Total
	with at least one adult and one child	without children	with only children	
2010 Quarter 3	240	1,111	47	1,398
2010 Quarter 4	196	946	53	1,195
2011 Quarter 2	266	1,078	62	1,406
2011 Quarter 3	257	1,119	58	1,434
2011 Quarter 4	207	1,717	93	2,017

