

## Data Sources for This Report

### CoC: AZ-500 Arizona Balance of State CoC

The CoC Profile includes data from Point-in-Time (PIT) Count, Housing Inventory Count (HIC), Annual Homeless Assessment Report (AHAR), and Homelessness Pulse report data entered into HUD's Homelessness Data Exchange (HDX). The data in this report is limited to data that has been finalized and determined to be useable. For each report type, all data sets that have been entered into the HDX are listed below, along with information that identifies whether or not the data is included in this report. Some fluctuations in numbers may be attributable to data that was excluded.

For CoCs which have merged, this report will only include data submitted under the current active CoC name and number. Data profile reports from merged CoCs may show significant increases in beds, units, and people, since only the data from the active CoC is being posted to the report.

### Point-in-Time (PIT) Data

Limited to PIT data with a reporting status of 'Confirmed' dated 1/1/2009 or later. All 2009 PIT data was imported to the HDX from the final data set submitted to HUD.

PIT methodologies for sheltered and unsheltered counts are included starting with the year 2013.

Date	Reporting Status	Included in CoC Profile
1/29/2008	Confirmed	No
1/26/2010	Confirmed	No
1/25/2011	Confirmed	No
1/24/2012	Confirmed	No
1/29/2013	Confirmed	No
1/28/2014	Confirmed	Yes
1/27/2015	Confirmed	Yes
1/26/2016	Confirmed	Yes
1/24/2017	Confirmed	Yes

### Housing Inventory Count (HIC) Data

Includes all HIC data with a reporting status of 'Confirmed'.

Data Sources for CoC: AZ-500 Arizona Balance of State CoC

Date	Reporting Status	Included in CoC Profile
1/26/2008	Confirmed	No
1/26/2009	Confirmed	No
1/26/2010	Confirmed	No
1/26/2011	Confirmed	No
1/24/2012	Confirmed	No
1/29/2013	Confirmed	No
1/28/2014	Confirmed	Yes
1/27/2015	Confirmed	Yes
1/26/2016	Confirmed	Yes
1/24/2017	Confirmed	Yes

### Annual Homeless Assessment Report (AHAR) Data

For CoCs with more than one AHAR site, data has been aggregated across all sites; counts of people who were served in more than one site may be duplicated. Only report sections marked 'Useable' below are included in this report. PSH report sections marked with an asterisk (\*) below were not added to the AHAR until 2010. Only years in which AHAR data were submitted are listed below.

**AHAR Acronyms**

ES = Emergency Shelter

TH = Transitional Housing

PSH = Permanent Supportive Housing

IND = Individuals

FAM = Families

Data Sources for CoC: AZ-500 Arizona Balance of State CoC

Arizona Balance of State CoC

Year	ES-IND	ES-FAM	TH-FAM	TH-IND	PSH-IND	PSH-IND
2007	TBD	TBD	TBD	TBD	*	*
2008	TBD	TBD	TBD	TBD	*	*
2009	TBD	TBD	TBD	TBD	*	*
2013	Useable	Useable	Useable	Useable	Useable	Useable
2014	Useable	Useable	Useable	Useable	Useable	Useable
2015	Useable	Useable	Useable	Useable	Useable	Useable
2016	Useable	Useable	Useable	Useable	Useable	Useable
2017	TBD	TBD	TBD	TBD	TBD	TBD

Flagstaff (AZ)

Year	ES-IND	ES-FAM	TH-FAM	TH-IND	PSH-IND	PSH-IND
2007	TBD	TBD	TBD	TBD	*	*
2008	Not Useable	Useable	Useable	Useable	*	*
2009	Useable	Useable	Useable	Useable	*	*
2010	Useable	Useable	Useable	Useable	Useable	Useable
2011	Useable	Useable	Useable	Not Useable	Useable	Useable
2012	Useable	Useable	Useable	Useable	Useable	Useable
2013	Useable	Useable	Useable	Useable	Useable	Useable
2014	Useable	Useable	Useable	Useable	Useable	Useable
2015	Useable	Useable	Useable	Useable	Useable	Useable
2016	Useable	Useable	Useable	Useable	Useable	Useable
2017	TBD	TBD	TBD	TBD	TBD	TBD

Pulse Data

Includes all Pulse data with a reporting status of 'Confirmed'. Only quarters for which Pulse data were submitted are listed below.

Data Sources for CoC: AZ-500 Arizona Balance of State CoC

<b>Date</b>	<b>Reporting Status</b>	<b>Included in CoC Profile</b>
2010 Quarter 3	Confirmed	Yes
2010 Quarter 4	Confirmed	Yes
2011 Quarter 1	Confirmed	Yes
2011 Quarter 2	Confirmed	Yes
2011 Quarter 3	Confirmed	Yes
2011 Quarter 4	Confirmed	Yes

Point-in-Time Counts of People Who Are Homeless  
CoC: AZ-500 Arizona Balance of State CoC

01/26/2010	01/25/2011	01/24/2012	01/29/2013
------------	------------	------------	------------

**Sheltered People in Households...**

With at Least One Adult and One Child	548	587	637	811
Under Age 18	*	*	*	565
Age 18 - 24	*	*	*	42
Over Age 24	*	*	*	204
Average household size	3.1	3.2	2.7	3.5
With Only Children	7	10	18	2
In one-child Households	*	*	*	2
In multi-child households	*	*	*	0
Average household size	1.0	1.3	1.0	1.0
Without Children	450	721	1,067	573
Age 18 - 24	*	*	*	70
Over Age 24	*	*	*	503
Average household size	1.0	1.0	1.1	1.0
All Sheltered People	1,005	1,318	1,722	1,386
Average household size	1.6	1.5	1.4	1.8

**Unsheltered People in Households...**

With at Least One Adult and One Child	*	433	*	176
Under Age 18	*	*	*	74
Age 18 - 24	*	*	*	15
Over Age 24	*	*	*	87
Average household size		4.2		3.5

Point-in-Time Counts of People Who Are Homeless CoC: AZ-500 Arizona Balance of State CoC

01/28/2014	01/27/2015	01/26/2016	01/24/2017
------------	------------	------------	------------

543	464	365	264
313	278	230	176
41	41	18	10
189	145	117	78
3.0	3.2	3.1	3.3
19	25	19	11
17	*	*	*
2	*	*	*
1.1	1.0	1.1	1.1
787	608	639	771
98	49	47	72
689	559	592	699
1.0	1.0	1.0	1.0
1,349	1,097	1,023	1,046
1.4	1.4	1.3	1.2

*	215	141	70
*	89	64	32
*	34	4	4
*	92	73	34
	3.6	3.8	4.1

Point-in-Time Counts of People Who Are Homeless CoC: AZ-500 Arizona Balance of State CoC

With Only Children	*	1	*	2
In one-child Households	*	*	*	2
In multi-child households	*	*	*	0
Average household size		1.0		1.0
Without Children	*	295	*	871
Age 18 - 24	*	*	*	70
Over Age 24	*	*	*	801
Average household size		1.0		1.2
All Unsheltered People	*	729	*	1,049
Average household size		1.8		1.3

**All People in Households...**

With at Least One Adult and One Child	548	1,020	637	987
Under Age 18	*	*	*	639
Age 18 - 24	*	*	*	57
Over Age 24	*	*	*	291
Average household size	3.1	3.6	2.7	3.5
With Only Children	7	11	18	4
In one-child Households	*	*	*	4
In multi-child households	*	*	*	0
Average household size	1.0	1.2	1.0	1.0
Without Children	450	1,016	1,067	1,444
Age 18 - 24	*	*	*	140
Over Age 24	*	*	*	1,304
Average household size	1.0	1.0	1.1	1.1
<b>All People</b>	<b>1,005</b>	<b>2,047</b>	<b>1,722</b>	<b>2,435</b>

Point-in-Time Counts of People Who Are Homeless CoC: AZ-500 Arizona Balance of State CoC

*	4	1	1
*	*	*	*
*	*	*	*
	1.0	1.0	1.0
*	1,086	1,075	651
*	75	59	46
*	1,011	1,016	605
	1.2	1.2	1.1
*	1,305	1,217	722
	1.4	1.3	1.1

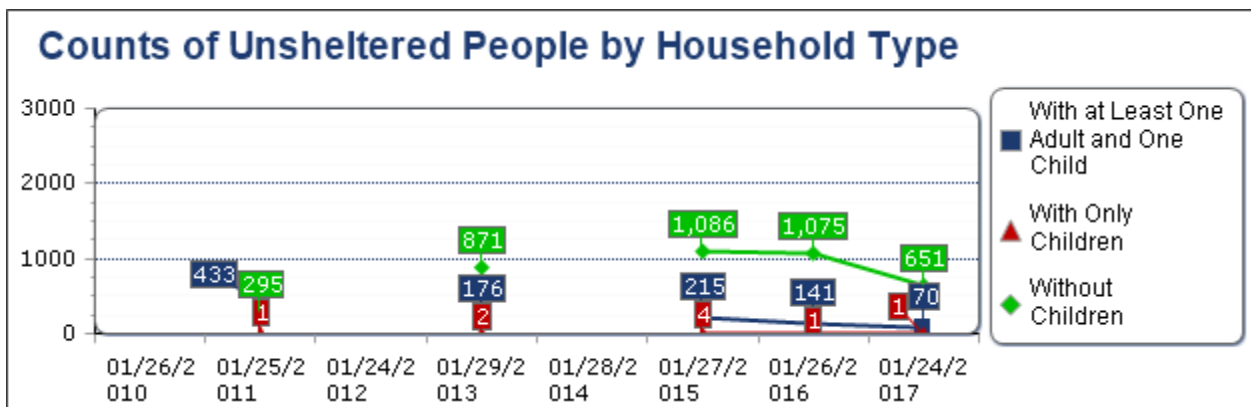
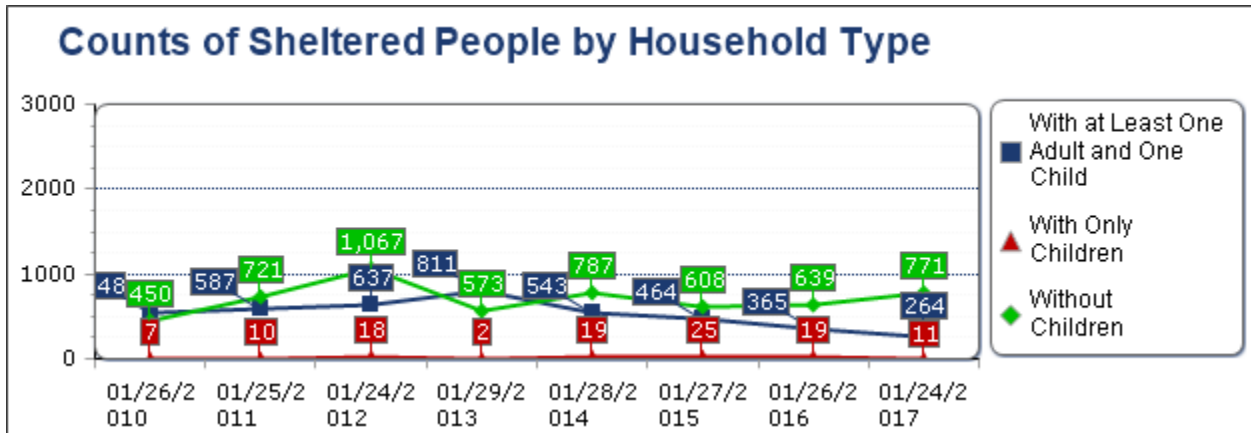
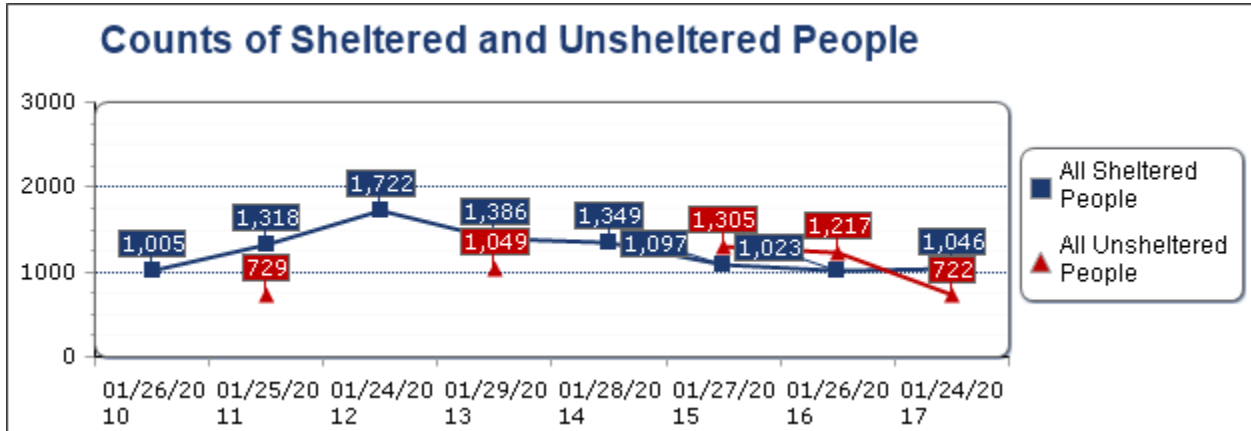
543	679	506	334
313	367	294	208
41	75	22	14
189	237	190	112
3.0	3.4	3.3	3.4
19	29	20	12
17	*	*	*
2	*	*	*
1.1	1.0	1.1	1.1
787	1,694	1,714	1,422
98	124	106	118
689	1,570	1,608	1,304
1.0	1.1	1.1	1.0
<b>1,349</b>	<b>2,402</b>	<b>2,240</b>	<b>1,768</b>



<b>Average household size</b>		<b>1.8</b>	<b>1.3</b>
-------------------------------	--	------------	------------

\*No data entered for this category on this date

The age categories ("Under Age 18", etc.) were added in 2013.



Point-in-Time Counts of People Who Are Homeless CoC: AZ-500 Arizona Balance of State CoC

	<b>1.4</b>	<b>1.3</b>	<b>1.1</b>
--	------------	------------	------------



**Point-in-Time Counts of People Who Are Homeless CoC: AZ-500 Arizona Balance of State CoC**

**Households without children** - Households with adults (18 or older) only. This includes households composed of unaccompanied adults and multiple adults.

**Households with at least one adult and one child** - Households with at least one adult (18 or older) and one child (under 18).

**Households with only children** - Households composed exclusively of persons under age 18, including unaccompanied children, adolescent parents and their children, adolescent siblings, or other household configurations composed only of children.

**Sheltered** - Sleeping in emergency shelters, transitional housing, and Safe Haven programs on the night designated for the count.

**Unsheltered** - Sleeping in a place not meant for human habitation, such as cars, parks, sidewalks abandoned buildings, or on the street.

PIT Subpopulations  
CoC: AZ-500 Arizona Balance of State CoC

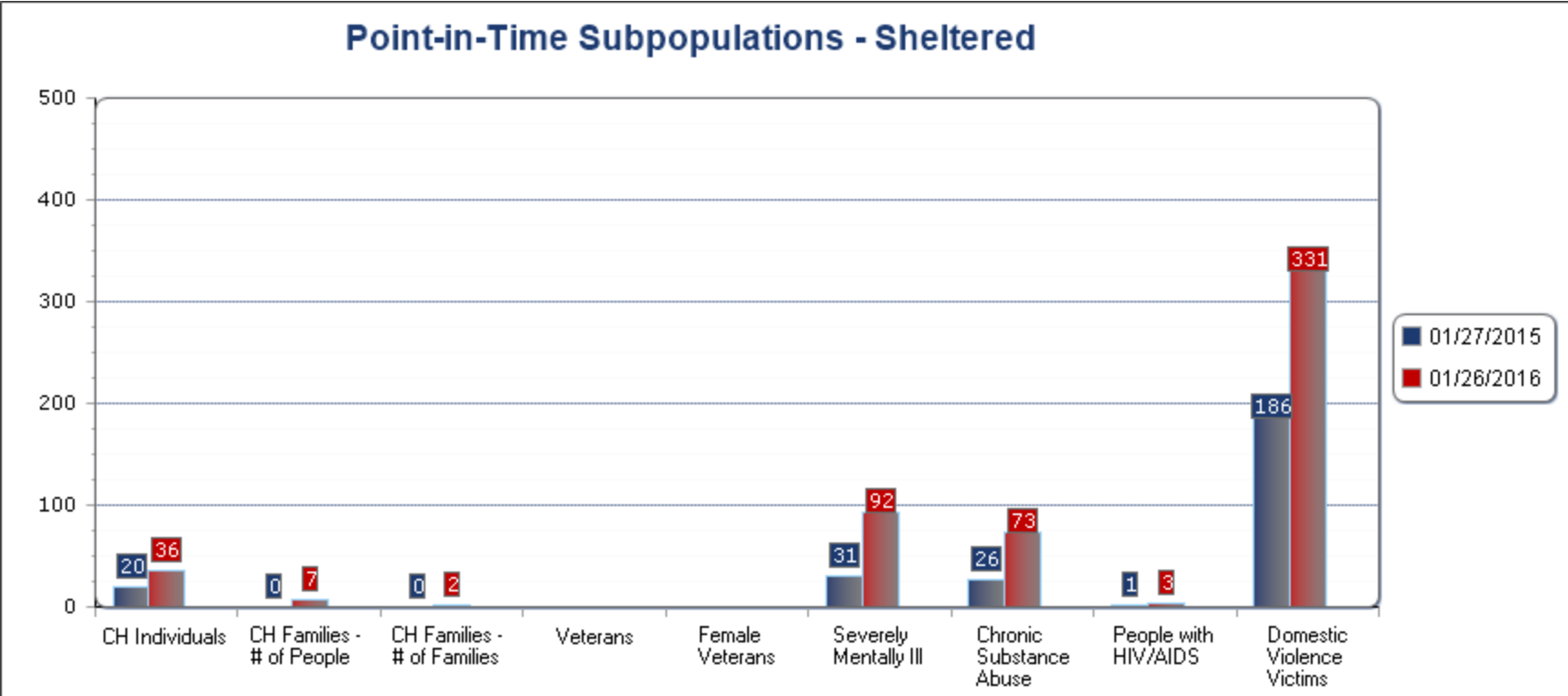
Population Type	01/27/2015			01/26/2016			01/24/2017		
	Sheltered	Unsheltered	All	Sheltered	Unsheltered	All	Sheltered	Unsheltered	All
Chronically Homeless Individuals	20	455	475	36	371	407	*	*	*
Chronically Homeless Families (Total Number of Families)	0	17	17	2	6	8	*	*	*
Chronically Homeless Families (Total Number of People in Household)	0	67	67	7	23	30	*	*	*
Veterans	*	*	*	*	*	*	*	*	*
Female Veterans	*	*	*	*	*	*	*	*	*
Severely Mentally Ill †	31	171	202	92	225	317	*	185	185
Chronic Substance Abuse †	26	409	435	73	351	424	*	130	130
People with HIV/AIDS †	1	15	16	3	11	14	*	2	2
Victims of Domestic Violence †	186	166	352	331	238	569	*	155	155

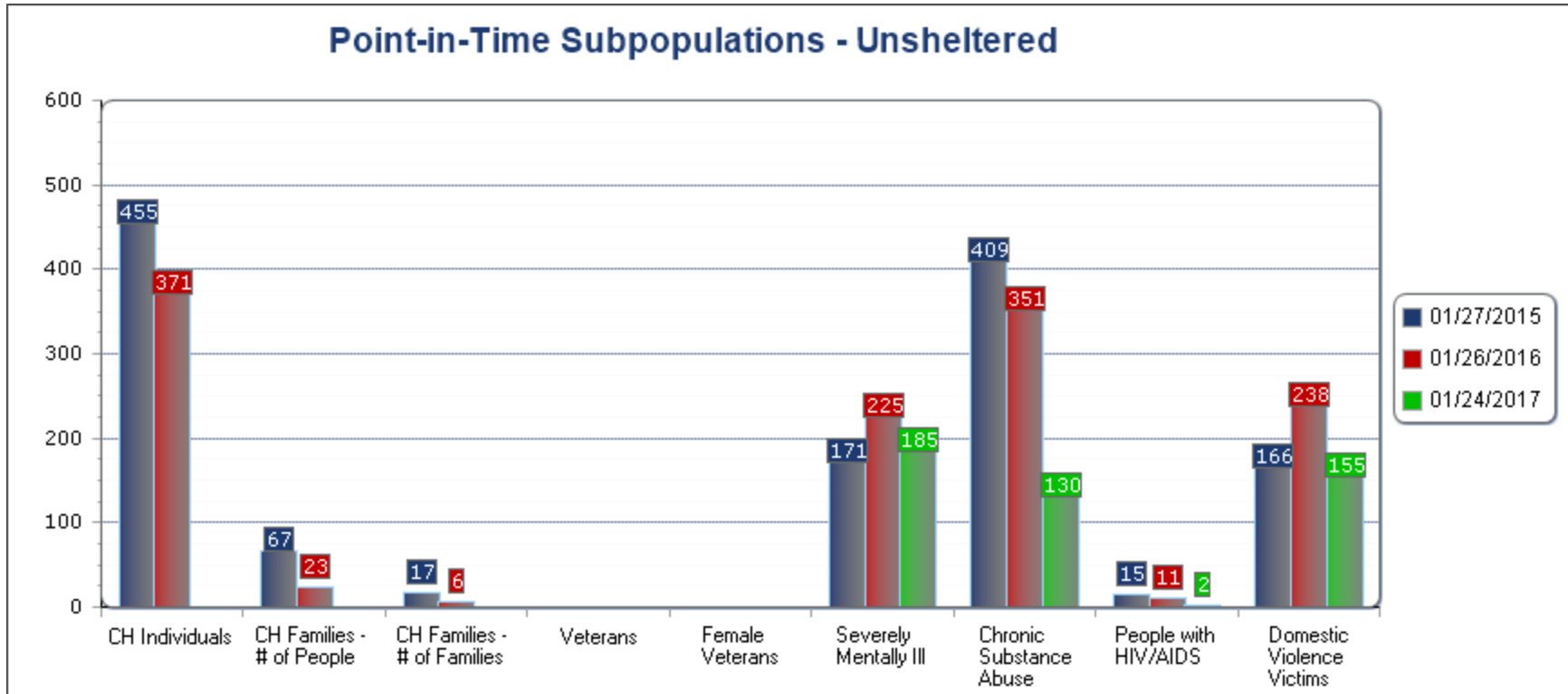
\* No data entered for this category on this date

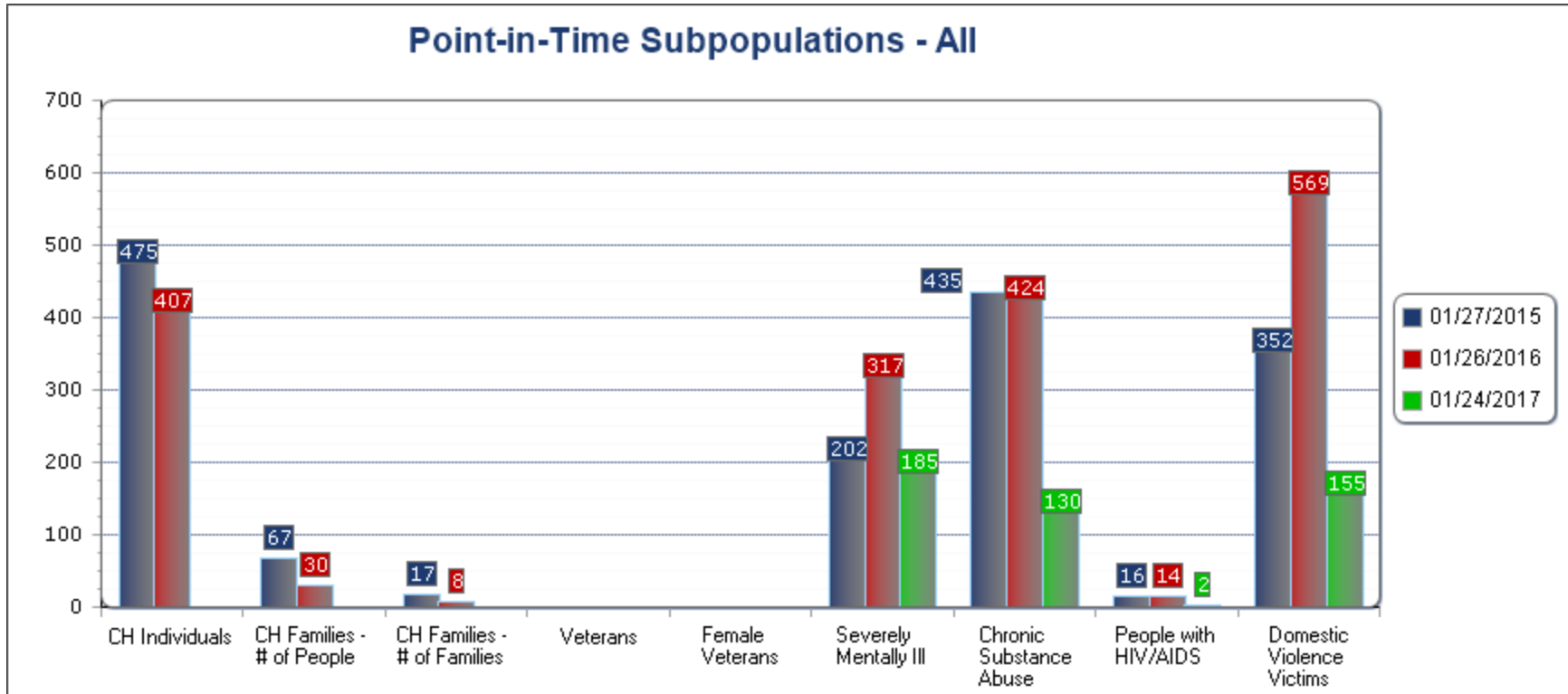
† Optional for unsheltered people

Starting in 2013:

- All subpopulations except victims of domestic violence are required.
- Unaccompanied children are no longer part of the subpopulations.
- Female veterans were added as a subpopulation.









## Housing Inventory Count

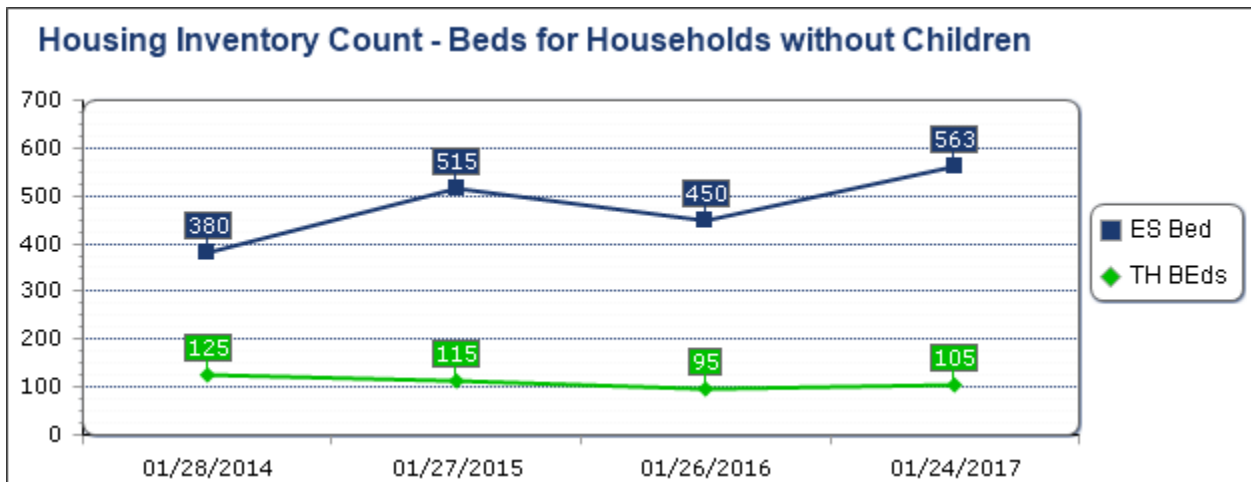
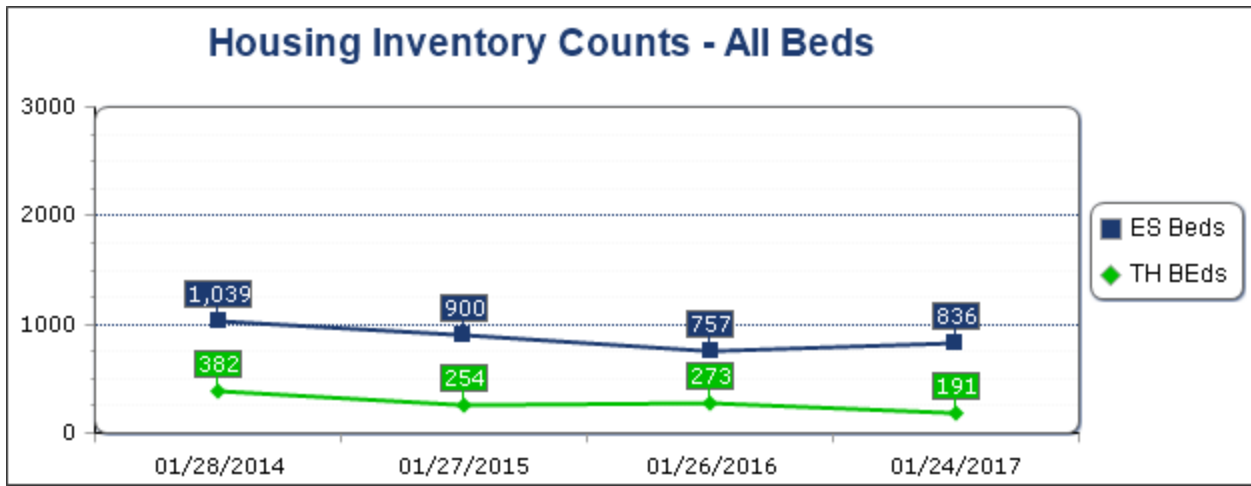
### CoC: AZ-500 Arizona Balance of State CoC

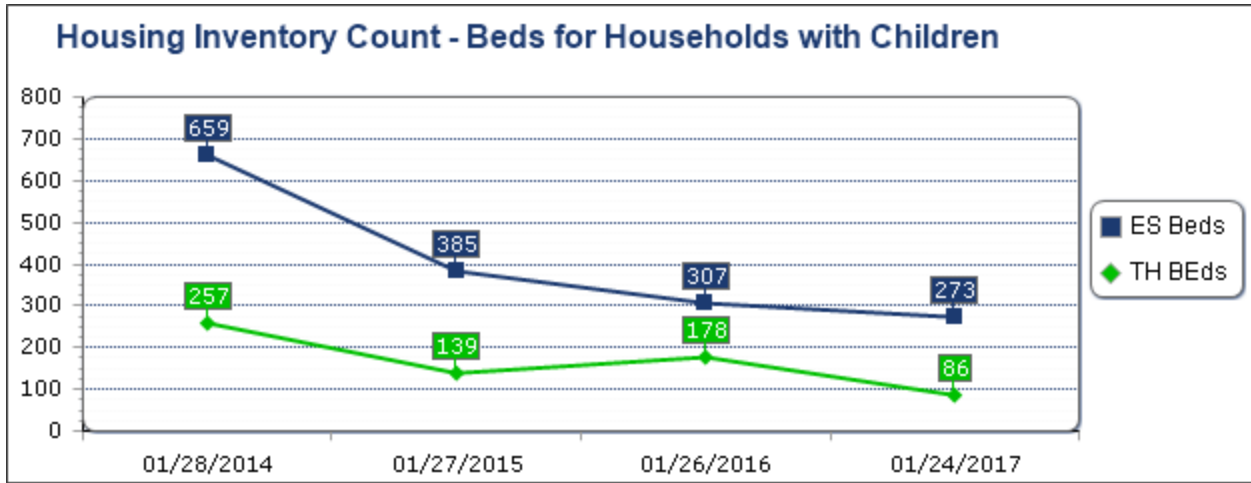
	01/28/2014 (2014)	01/27/2015 (2015)	01/26/2016 (2016)	01/24/2017 (2017)	change from last year	overall change
<b>Emergency Shelter</b>						
Units, Households with Children	113	104	85	57	-33 %	-50 %
Beds, Households with Children	659	385	307	273	-11 %	-59 %
Beds, Households without Children	380	515	450	563	25 %	48 %
<b>Emergency Shelter Beds</b>	<b>1,039</b>	<b>900</b>	<b>757</b>	<b>836</b>	<b>10 %</b>	<b>-20 %</b>
<b>Transitional Housing</b>						
Units, Households with Children	70	43	48	26	-46 %	-63 %
Beds, Households with Children	257	139	178	86	-52 %	-67 %
Beds, Households without Children	125	115	95	105	11 %	-16 %
<b>Transitional Housing Beds</b>	<b>382</b>	<b>254</b>	<b>273</b>	<b>191</b>	<b>-30 %</b>	<b>-50 %</b>
<b>Safe Haven</b>						
Beds, Households without Children	*	*	*	*	*	*
<b>Safe Haven Beds</b>	<b>*</b>	<b>*</b>	<b>*</b>	<b>*</b>	<b>*</b>	<b>*</b>
<b>Permanent Supportive Housing</b>						
Units, Households with Children	*	*	*	*	*	*
Beds, Households with Children	*	*	*	*	*	*
Beds, Households without Children	*	*	*	*	*	*
<b>Permanent Supportive Housing Beds</b>	<b>*</b>	<b>*</b>	<b>*</b>	<b>*</b>	<b>*</b>	<b>*</b>
<b>HPRP</b>						
Units, Households with Children	*	*	*	*	*	*
Beds, Households with Children	*	*	*	*	*	*
Beds, Households without Children	*	*	*	*	*	*
<b>HPRP Beds</b>	<b>*</b>	<b>*</b>	<b>*</b>	<b>*</b>	<b>*</b>	<b>*</b>
<b>RRH</b>						
Units, Households with Children	*	*	*	*	*	*

Housing Inventory Count CoC: AZ-500 Arizona Balance of State CoC

Beds, Households with Children	*	*	*	*	*	*
Beds, Households without Children	*	*	*	*	*	*
<b>RRH Beds</b>	*	*	*	*	*	*

\*No data entered for this category on this date  
 In 2013, HPRP was discontinued and RRH was added.





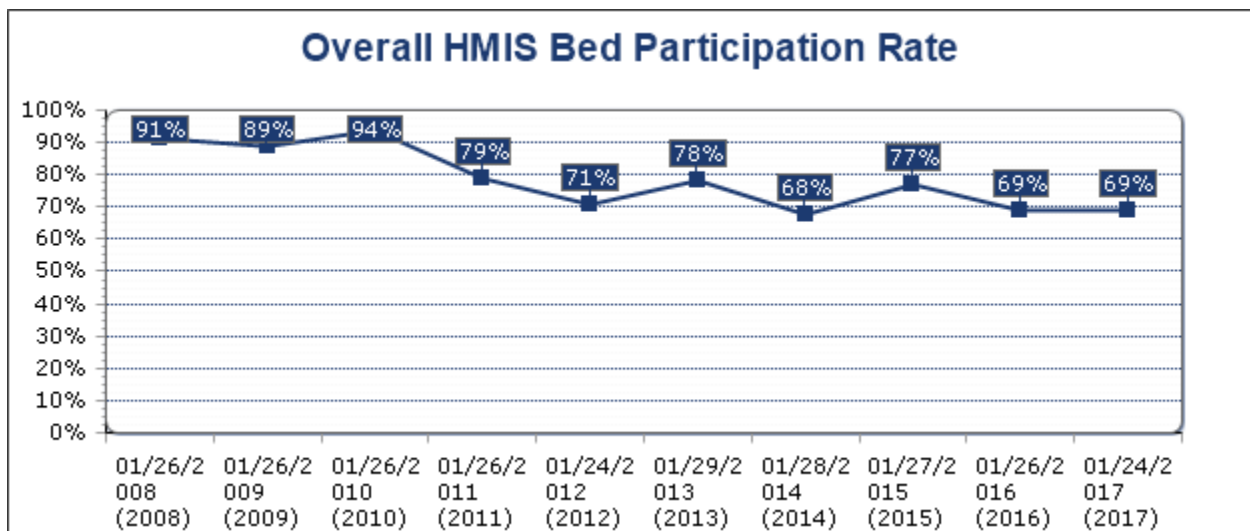
HPRP was a time limited program and these beds are not included in the charts for annual comparison purposes

## Housing Inventory Count HMIS Bed Participation Rates CoC: AZ-500 Arizona Balance of State CoC

HMIS participation rates have been corrected and no longer include domestic violence beds in the HMIS bed participation rate.

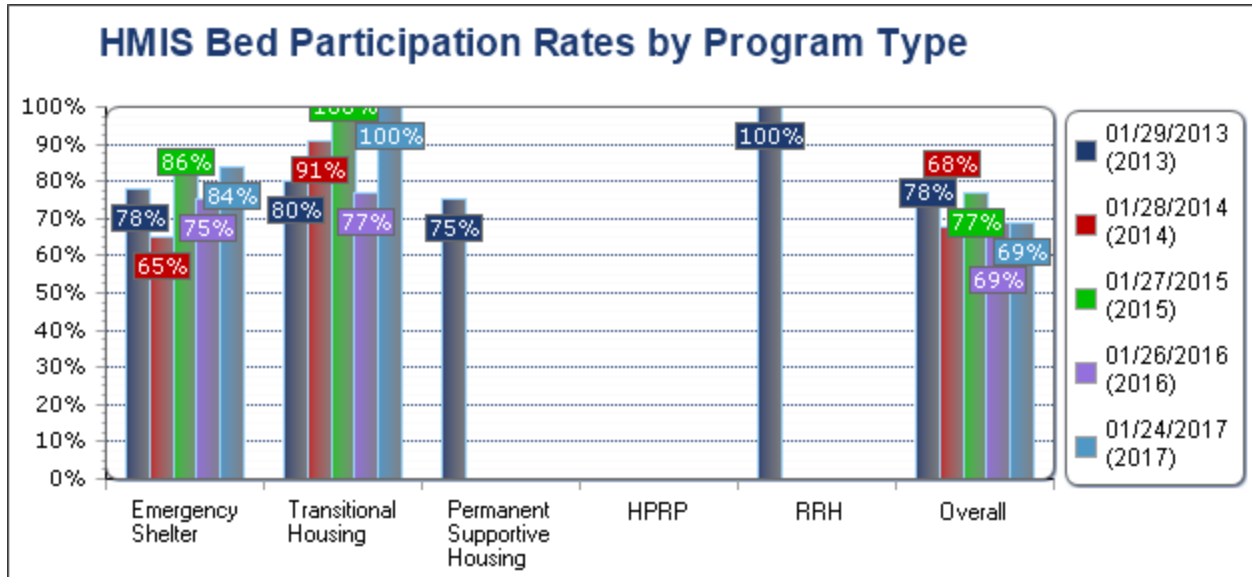
	01/26/2008 (2008)	01/26/2009 (2009)	01/26/2010 (2010)	01/26/2011 (2011)
Emergency Shelter	98 %	95 %	92 %	69 %
Transitional Housing	86 %	87 %	91 %	81 %
Safe Haven	*	*	*	*
Permanent Supportive Housing	92 %	85 %	100 %	86 %
HPRP	*	*	100 %	100 %
RRH	*	*	*	*
<b>Overall</b>	<b>91 %</b>	<b>89 %</b>	<b>94 %</b>	<b>79 %</b>

HMIS participation rates are based on year-round beds and do not include seasonal or overflow beds.



Housing Inventory Count HMIS Bed Participation Rates CoC: AZ-500 Arizona Balance of State CoC

01/24/2012 (2012)	01/29/2013 (2013)	01/28/2014 (2014)	01/27/2015 (2015)	01/26/2016 (2016)	01/24/2017 (2017)
51 %	78 %	65 %	86 %	75 %	84 %
86 %	80 %	91 %	100 %	77 %	100 %
*	*	*	*	*	*
71 %	75 %	60 %	100 %	48 %	55 %
100 %	*	*	*	*	*
*	100 %	97 %	83 %	100 %	95 %
<b>71 %</b>	<b>78 %</b>	<b>68 %</b>	<b>77 %</b>	<b>69 %</b>	<b>69 %</b>



Housing Inventory Count HMIS Bed Participation Rates CoC: AZ-500 Arizona Balance of State CoC

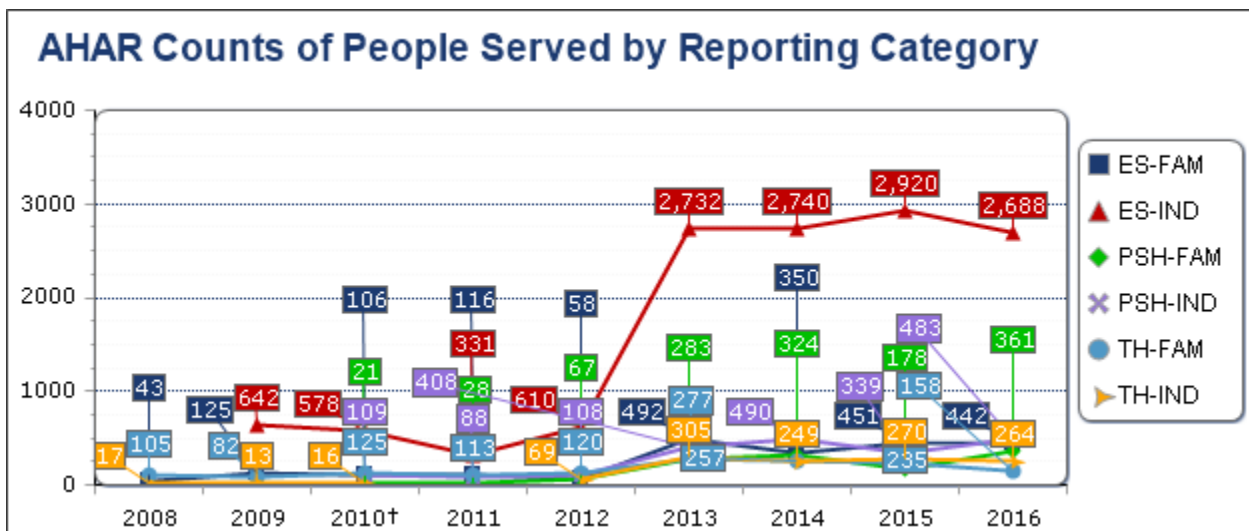
Annual Homeless Assessment Report Counts  
 CoC: AZ-500 Arizona Balance of State CoC

AHAR Counts of People Served by Reporting Category

Reporting Category	2008	2009	2010†	2011	2012
Individuals in Emergency Shelter	*	642	578	331	610
Individuals in Transitional Housing	17	13	16	*	69
Individuals in Permanent Supportive Housing	*	*	109	88	108
Families in Emergency Shelter	43	125	106	116	58
Families in Transitional Housing	105	82	125	113	120
Families in Permanent Supportive Housing	*	*	21	28	67

† First year PSH data included in AHAR.

\*No data entered for this year or status is not Confirmed and Usable.





Annual Homeless Assessment Report Counts CoC: AZ-500 Arizona Balance of State CoC

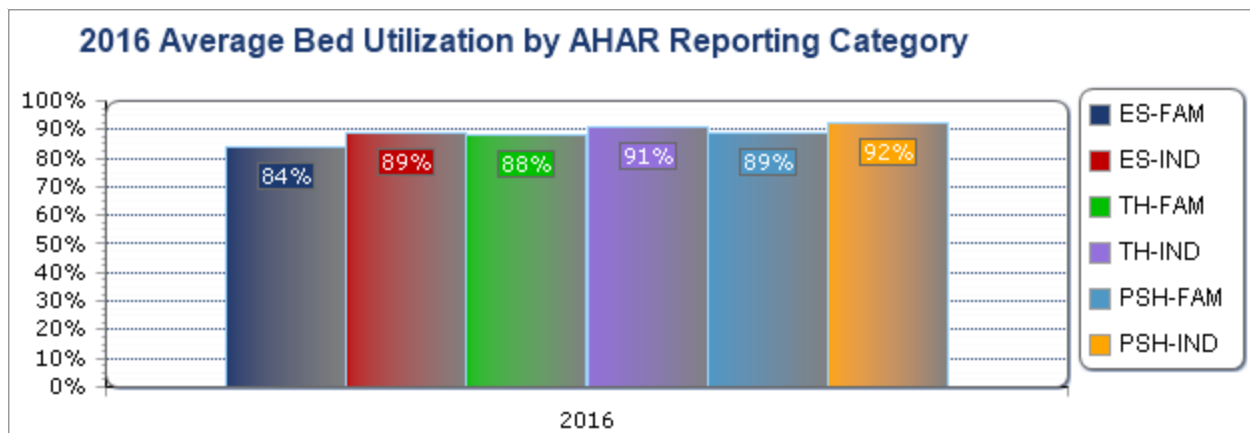
2013	2014	2015	2016
2,732	2,740	2,920	2,688
305	249	270	264
408	490	339	483
492	350	451	442
277	257	235	158
283	324	178	361

Annual Homeless Assessment Report Counts CoC: AZ-500 Arizona Balance of State CoC

Reporting Category	2008	2009	2010†	2011	2012
Individuals in Emergency Shelter	*	79 %	98 %	100 %	92 %
Individuals in Transitional Housing	76 %	71 %	75 %	*	73 %
Individuals in Permanent Supportive Housing	*	*	89 %	95 %	90 %
Families in Emergency Shelter	67 %	75 %	88 %	96 %	77 %
Families in Transitional Housing	74 %	85 %	92 %	96 %	91 %
Families in Permanent Supportive Housing	*	*	75 %	90 %	82 %

† First year PSH data included in AHAR.

\*No data entered for this year or status is not Confirmed and Usable.



### Average Bed Utilization by AHAR Reporting Category

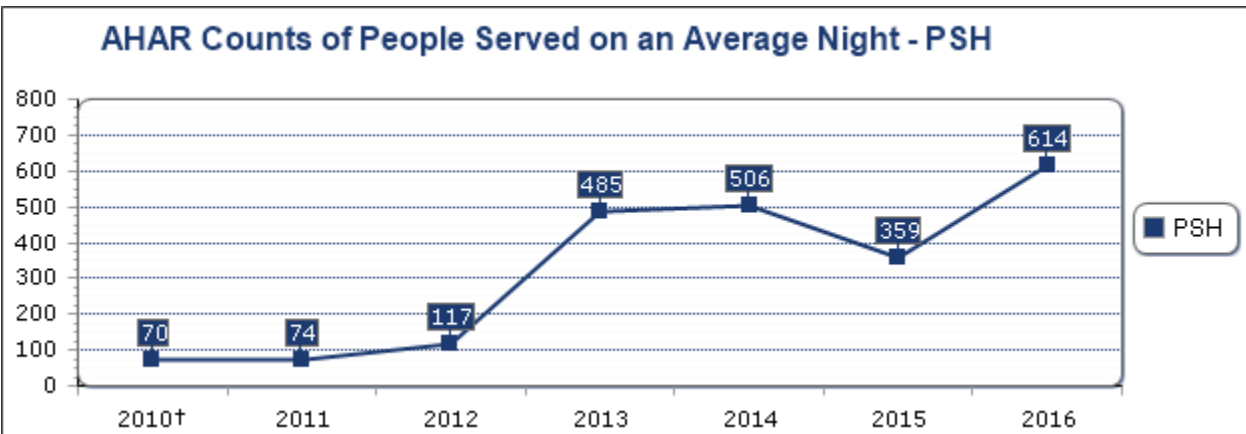
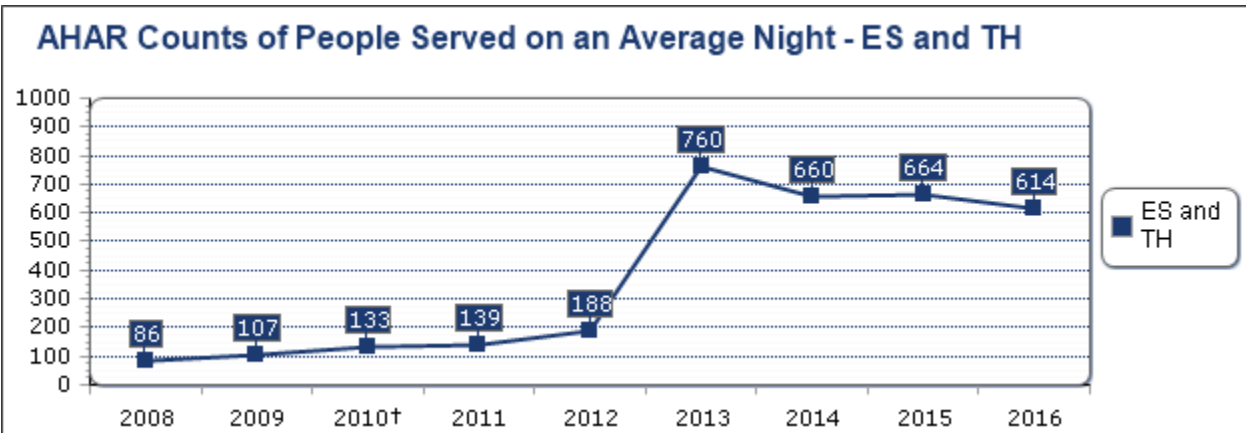
2013	2014	2015	2016
123 %	93 %	93 %	89 %
79 %	87 %	96 %	91 %
95 %	97 %	95 %	92 %
74 %	80 %	99 %	84 %
67 %	83 %	99 %	88 %
100 %	93 %	80 %	89 %

Annual Homeless Assessment Report Counts CoC: AZ-500 Arizona Balance of State CoC

Reporting Category	2008	2009	2010†	2011	2012
Individuals in Emergency Shelter	*	34	41	46	60
Individuals in Transitional Housing	16	10	6	*	40
Individuals in Permanent Supportive Housing	*	*	55	56	76
Families in Emergency Shelter	8	18	21	23	20
Families in Transitional Housing	62	45	65	70	68
Families in Permanent Supportive Housing	*	*	15	18	41
<b>Total</b>	<b>86</b>	<b>107</b>	<b>203</b>	<b>213</b>	<b>305</b>

† First year PSH data included in AHAR.

\*No data entered for this year or status is not Confirmed and Usable.



Annual Homeless Assessment Report Counts CoC: AZ-500 Arizona Balance of State CoC

AHAR Counts of People Served on an Average Night

2013	2014	2015	2016
356	343	360	353
117	80	109	106
286	313	243	344
133	103	75	64
154	134	120	91
199	193	116	270
<b>1,245</b>	<b>1,166</b>	<b>1,023</b>	<b>1,228</b>

## AHAR Living Situation Prior to Program Entry CoC: AZ-500 Arizona Balance of State CoC

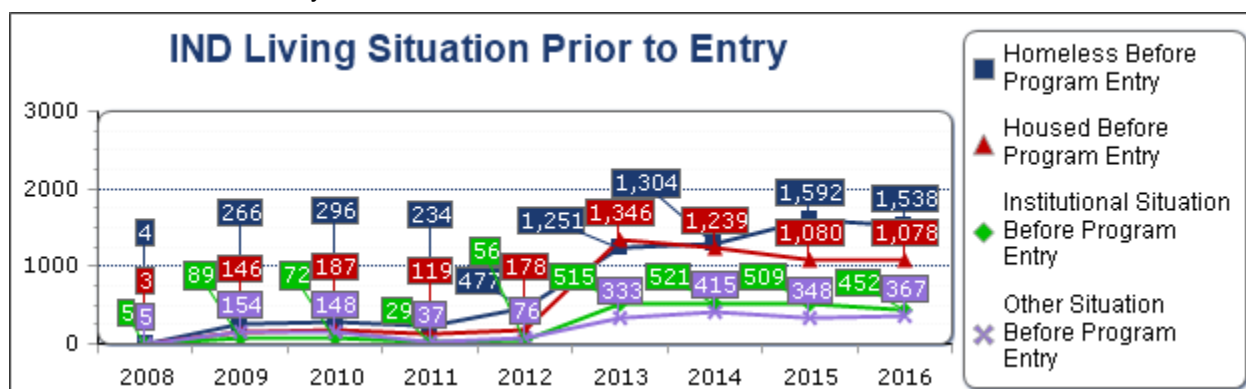
### Individuals Living Situation Prior to Program Entry

This table includes data about living situation prior to program entry (where persons spent last night) as reported in the AHAR for individuals in emergency shelter, transitional housing and permanent supportive housing. Individuals included in this table are people in households comprised of only adults or only persons age 17 or under, including unaccompanied children, adolescent parents and their children, adolescent siblings, or other household configurations composed only of children.

Living Situation	2008	2009	2010†	2011	2012
Place not meant for habitation	0	210	209	122	241
Emergency Shelter, Safe Haven, or Transitional Housing	4	56	87	112	236
<b>Homeless Before Program Entry</b>	<b>4</b>	<b>266</b>	<b>296</b>	<b>234</b>	<b>477</b>
Staying with family/friends	2	124	155	104	133
Rented/owned	1	22	32	15	45
<b>Housed Before Program Entry</b>	<b>3</b>	<b>146</b>	<b>187</b>	<b>119</b>	<b>178</b>
Psychiatric facility, substance abuse center, or hospital	2	39	25	18	26
Jail, prison, or juvenile detention	1	46	43	11	29
Foster care home	2	4	4	0	1
<b>Institutional Situation Before Program Entry</b>	<b>5</b>	<b>89</b>	<b>72</b>	<b>29</b>	<b>56</b>
Hotel or motel with no voucher	1	54	67	31	52
Other	0	21	35	6	24
Information missing	4	79	46	0	0
<b>Other Situation Before Program Entry</b>	<b>5</b>	<b>154</b>	<b>148</b>	<b>37</b>	<b>76</b>

†First year PSH data included in AHAR.

\*No data entered for this year or status is not Confirmed and Usable.



AHAR Living Situation Prior to Program Entry CoC: AZ-500 Arizona Balance of State CoC

2013	2014	2015	2016
748	804	1,084	1,033
503	500	508	505
<b>1,251</b>	<b>1,304</b>	<b>1,592</b>	<b>1,538</b>
884	833	764	730
462	406	316	348
<b>1,346</b>	<b>1,239</b>	<b>1,080</b>	<b>1,078</b>
274	274	219	200
232	241	280	248
9	6	10	4
<b>515</b>	<b>521</b>	<b>509</b>	<b>452</b>
184	236	232	215
64	90	107	87
85	89	9	65
<b>333</b>	<b>415</b>	<b>348</b>	<b>367</b>

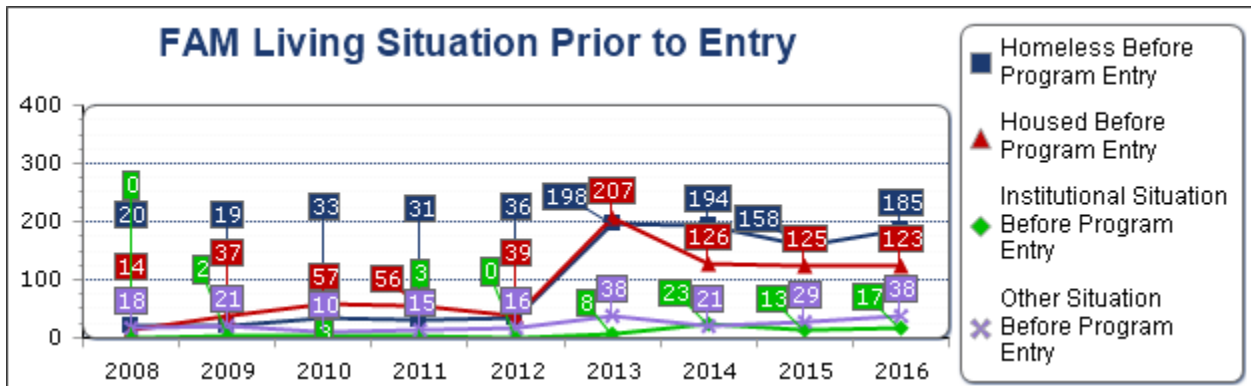
### Family Living Situation Prior to Program Entry

This table includes data about living situation prior to program entry (where persons spent last night) as reported in the AHAR for families in emergency shelter, transitional housing and permanent supportive housing. People included in this table are persons in households with at least one adult and one child.

Living Situation	2008	2009	2010†	2011	2012
Place not meant for habitation	2	4	7	5	0
Emergency Shelter, Safe Haven, or Transitional Housing	18	15	26	26	36
<b>Homeless Before Program Entry</b>	<b>20</b>	<b>19</b>	<b>33</b>	<b>31</b>	<b>36</b>
Staying with family/friends	11	28	45	44	30
Rented/owned	3	9	12	12	9
<b>Housed Before Program Entry</b>	<b>14</b>	<b>37</b>	<b>57</b>	<b>56</b>	<b>39</b>
Psychiatric facility, substance abuse center, or hospital	0	1	2	1	0
Jail, prison, or juvenile detention	0	1	1	2	0
Foster care home	0	0	0	0	0
<b>Institutional Situation Before Program Entry</b>	<b>0</b>	<b>2</b>	<b>3</b>	<b>3</b>	<b>0</b>
Hotel or motel with no voucher	11	8	7	12	13
Other	1	2	3	3	3
Information missing	6	11	0	0	0
<b>Other Situation Before Program Entry</b>	<b>18</b>	<b>21</b>	<b>10</b>	<b>15</b>	<b>16</b>

†First year PSH data included in AHAR.

\*No data entered for this year or status is not Confirmed and Usable.





AHAR Living Situation Prior to Program Entry CoC: AZ-500 Arizona Balance of State CoC

2013	2014	2015	2016
83	93	59	93
115	101	99	92
<b>198</b>	<b>194</b>	<b>158</b>	<b>185</b>
134	87	84	78
73	39	41	45
<b>207</b>	<b>126</b>	<b>125</b>	<b>123</b>
7	16	6	4
1	7	7	13
0	0	0	0
<b>8</b>	<b>23</b>	<b>13</b>	<b>17</b>
25	16	22	28
6	4	7	9
7	1	0	1
<b>38</b>	<b>21</b>	<b>29</b>	<b>38</b>

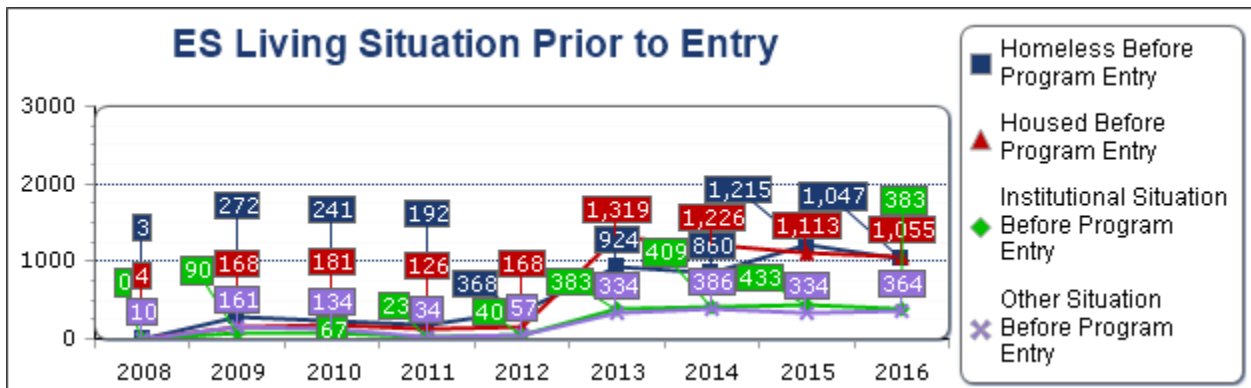
### Living Situation Prior to Program Entry for People Staying in Emergency Shelter

This table includes data about where people were staying the night prior to program entry for all persons served in emergency shelter during the AHAR reporting period. Data is reported for both individuals and families.

Living Situation	2008	2009	2010†	2011	2012
Place not meant for habitation	1	212	182	103	218
Emergency Shelter, Safe Haven, or Transitional Housing	2	60	59	89	150
<b>Homeless Before Program Entry</b>	<b>3</b>	<b>272</b>	<b>241</b>	<b>192</b>	<b>368</b>
Staying with family/friends	4	143	147	106	124
Rented/owned	0	25	34	20	44
<b>Housed Before Program Entry</b>	<b>4</b>	<b>168</b>	<b>181</b>	<b>126</b>	<b>168</b>
Psychiatric facility, substance abuse center, or hospital	0	40	24	13	15
Jail, prison, or juvenile detention	0	47	41	10	25
Foster care home	0	3	2	0	0
<b>Institutional Situation Before Program Entry</b>	<b>0</b>	<b>90</b>	<b>67</b>	<b>23</b>	<b>40</b>
Hotel or motel with no voucher	5	56	64	29	37
Other	1	19	26	5	20
Information missing	4	86	44	0	0
<b>Other Situation Before Program Entry</b>	<b>10</b>	<b>161</b>	<b>134</b>	<b>34</b>	<b>57</b>

†First year PSH data included in AHAR.

\*No data entered for this year or status is not Confirmed and Usable.



AHAR Living Situation Prior to Program Entry CoC: AZ-500 Arizona Balance of State CoC

2013	2014	2015	2016
577	557	850	697
347	303	365	350
<b>924</b>	<b>860</b>	<b>1,215</b>	<b>1,047</b>
856	832	785	716
463	394	328	339
<b>1,319</b>	<b>1,226</b>	<b>1,113</b>	<b>1,055</b>
163	183	165	156
216	224	260	225
4	2	8	2
<b>383</b>	<b>409</b>	<b>433</b>	<b>383</b>
181	231	222	215
62	81	104	85
91	74	8	64
<b>334</b>	<b>386</b>	<b>334</b>	<b>364</b>

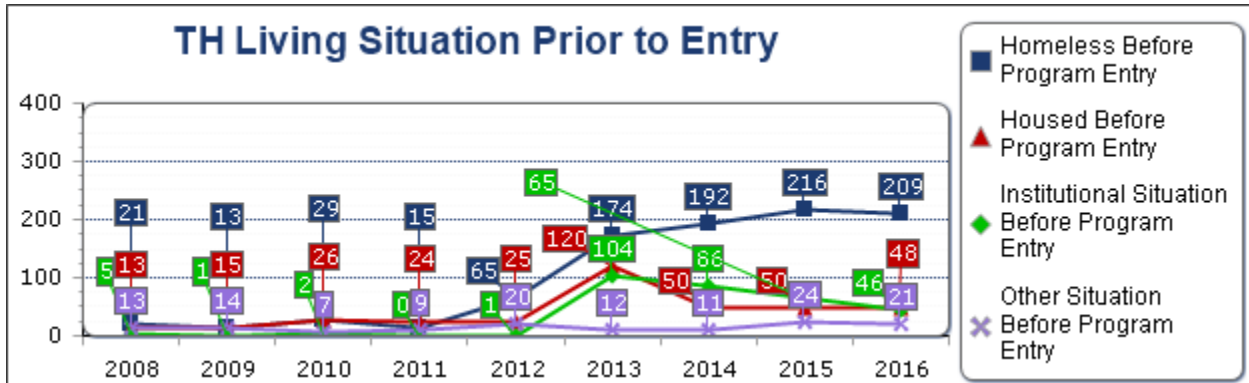
### Living Situation Prior to Program Entry for People Living in Temporary Housing

This table includes data about where people were staying the night prior to program entry for all persons served in temporary housing during the AHAR reporting period. Data is reported for both individuals and families.

Living Situation	2008	2009	2010†	2011	2012
Place not meant for habitation	1	2	2	0	5
Emergency Shelter, Safe Haven, or Transitional Housing	20	11	27	15	60
<b>Homeless Before Program Entry</b>	<b>21</b>	<b>13</b>	<b>29</b>	<b>15</b>	<b>65</b>
Staying with family/friends	9	9	20	19	17
Rented/owned	4	6	6	5	8
<b>Housed Before Program Entry</b>	<b>13</b>	<b>15</b>	<b>26</b>	<b>24</b>	<b>25</b>
Psychiatric facility, substance abuse center, or hospital	2	0	1	0	1
Jail, prison, or juvenile detention	1	0	0	0	0
Foster care home	2	1	1	0	0
<b>Institutional Situation Before Program Entry</b>	<b>5</b>	<b>1</b>	<b>2</b>	<b>0</b>	<b>1</b>
Hotel or motel with no voucher	7	6	4	6	18
Other	0	4	3	3	2
Information missing	6	4	0	0	0
<b>Other Situation Before Program Entry</b>	<b>13</b>	<b>14</b>	<b>7</b>	<b>9</b>	<b>20</b>

†First year PSH data included in AHAR.

\*No data entered for this year or status is not Confirmed and Usable.



AHAR Living Situation Prior to Program Entry CoC: AZ-500 Arizona Balance of State CoC

2013	2014	2015	2016
51	89	129	149
123	103	87	60
<b>174</b>	<b>192</b>	<b>216</b>	<b>209</b>
85	33	34	29
35	17	16	19
<b>120</b>	<b>50</b>	<b>50</b>	<b>48</b>
90	70	46	24
12	16	19	22
2	0	0	0
<b>104</b>	<b>86</b>	<b>65</b>	<b>46</b>
11	9	21	18
1	2	2	2
0	0	1	1
<b>12</b>	<b>11</b>	<b>24</b>	<b>21</b>

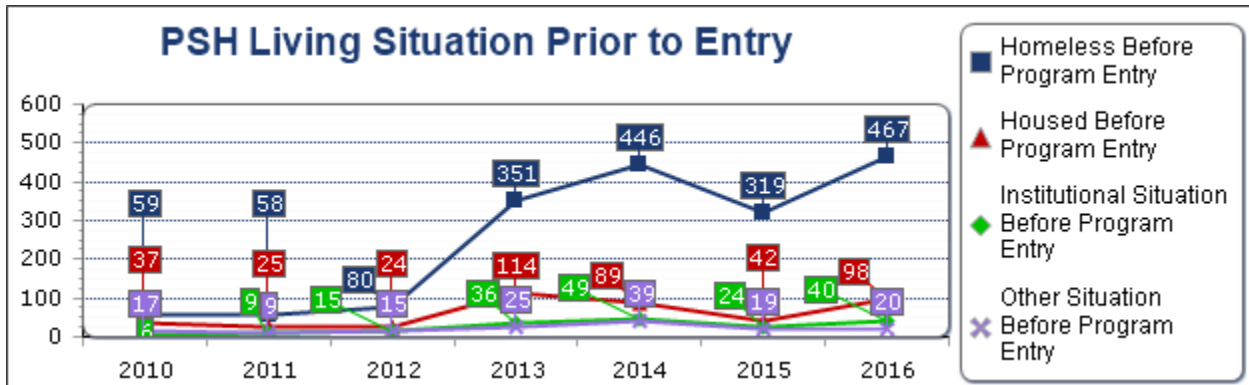
Living Situation Prior to Program Entry for People Living in Permanent Supportive Housing

This table includes data about where people were staying the night prior to program entry for all persons served in permanent supportive housing during the AHAR reporting period. Data is reported for both individuals and families.

Living Situation	2010†	2011	2012	2013	2014
Place not meant for habitation	32	24	18	203	251
Emergency Shelter, Safe Haven, or Transitional Housing	27	34	62	148	195
<b>Homeless Before Program Entry</b>	<b>59</b>	<b>58</b>	<b>80</b>	<b>351</b>	<b>446</b>
Staying with family/friends	33	23	22	77	55
Rented/owned	4	2	2	37	34
<b>Housed Before Program Entry</b>	<b>37</b>	<b>25</b>	<b>24</b>	<b>114</b>	<b>89</b>
Psychiatric facility, substance abuse center, or hospital	2	6	10	28	37
Jail, prison, or juvenile detention	3	3	4	5	8
Foster care home	1	0	1	3	4
<b>Institutional Situation Before Program Entry</b>	<b>6</b>	<b>9</b>	<b>15</b>	<b>36</b>	<b>49</b>
Hotel or motel with no voucher	6	8	10	17	12
Other	9	1	5	7	11
Information missing	2	0	0	1	16
<b>Other Situation Before Program Entry</b>	<b>17</b>	<b>9</b>	<b>15</b>	<b>25</b>	<b>39</b>

†First year PSH data included in AHAR.

\*No data entered for this year or status is not Confirmed and Usable.



AHAR Living Situation Prior to Program Entry CoC: AZ-500 Arizona Balance of State CoC

2015	2016
164	280
155	187
<b>319</b>	<b>467</b>
29	63
13	35
<b>42</b>	<b>98</b>
14	24
8	14
2	2
<b>24</b>	<b>40</b>
11	10
8	9
0	1
<b>19</b>	<b>20</b>

## AHAR Destination of People Exiting Permanent Supportive Housing CoC: AZ-500 Arizona Balance of State CoC

### Exit Destination for Families in Permanent Supportive Housing

This table includes data about housing destinations of people in households with at least one adult and one child who exited permanent supportive housing during the AHAR reporting period. Note that prior to 2011, There was no distinction between staying with family/friends permanently or temporarily. All family/friends destinations prior to 2011 are grouped in the temporary category.

Destination	2010	2011	2012	2013	2014
Permanent supportive housing	*	0	0	0	0
Rental by client	3	3	4	31	44
Staying with family/friends (permanent)	*	0	0	11	17
Owned by client	*	0	0	0	0
<b>Permanent housing destination subtotal</b>	<b>3</b>	<b>3</b>	<b>4</b>	<b>42</b>	<b>61</b>
Emergency shelter	*	0	0	0	1
Transitional housing	*	0	0	0	0
Staying with family/friends (temporary)	2	0	3	7	2
Place not meant for habitation	*	0	0	0	0
Safe Haven	*	0	0	0	0
Hotel or motel (no voucher)	*	0	5	0	0
<b>Temporary housing destination subtotal</b>	<b>2</b>	<b>0</b>	<b>8</b>	<b>7</b>	<b>3</b>
Psychiatric facility	*	0	0	0	0
Substance abuse treatment or detox	*	0	3	10	0
Hospital (non-psychiatric)	*	0	0	0	0
Jail, prison, or juvenile detention	*	0	2	5	6
Foster care home	*	0	0	0	0
<b>Institutional housing destination subtotal</b>	<b>*</b>	<b>0</b>	<b>5</b>	<b>15</b>	<b>6</b>
Deceased	*	0	1	1	0



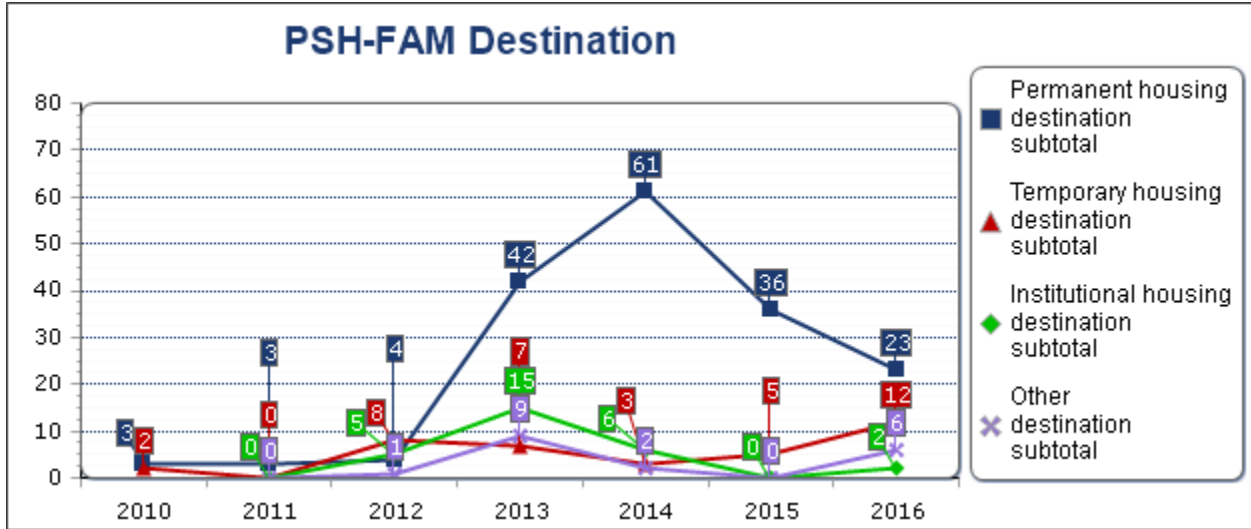
AHAR Destination of People Exiting Permanent Supportive Housing CoC: AZ-500 Arizona Balance of

2015	2016
8	0
27	12
0	11
1	0
<b>36</b>	<b>23</b>
0	0
0	0
5	12
0	0
0	0
0	0
<b>5</b>	<b>12</b>
0	0
0	0
0	0
0	0
0	2
<b>0</b>	<b>2</b>
0	5

AHAR Destination of People Exiting Permanent Supportive Housing CoC: AZ-500 Arizona Balance of

Other living arrangement	*	0	0	5	0
Missing this information	*	0	0	3	2
<b>Other destination subtotal</b>	*	<b>0</b>	<b>1</b>	<b>9</b>	<b>2</b>

\*No data entered or status is not Confirmed and Usable.



Exit Destination for Individuals in Permanent Supportive Housing

This table includes data about housing destinations of people in households comprised of only adults or only children who exited permanent supportive housing during the AHAR reporting period. Note that prior to 2011, There was no distinction between staying with family/friends permanently or temporarily. All family/friends destinations prior to 2011 are grouped in the temporary category.

Destination	2010	2011	2012	2013	2014
Permanent supportive housing	3	3	7	1	0
Rental by client	12	5	2	35	28
Staying with family/friends (permanent)	*	2	3	18	20
Owned by client	2	0	0	1	4
<b>Permanent housing destination subtotal</b>	<b>17</b>	<b>10</b>	<b>12</b>	<b>55</b>	<b>52</b>
Emergency shelter	1	0	3	2	4
Transitional housing	1	1	0	1	1

AHAR Destination of People Exiting Permanent Supportive Housing CoC: AZ-500 Arizona Balance of

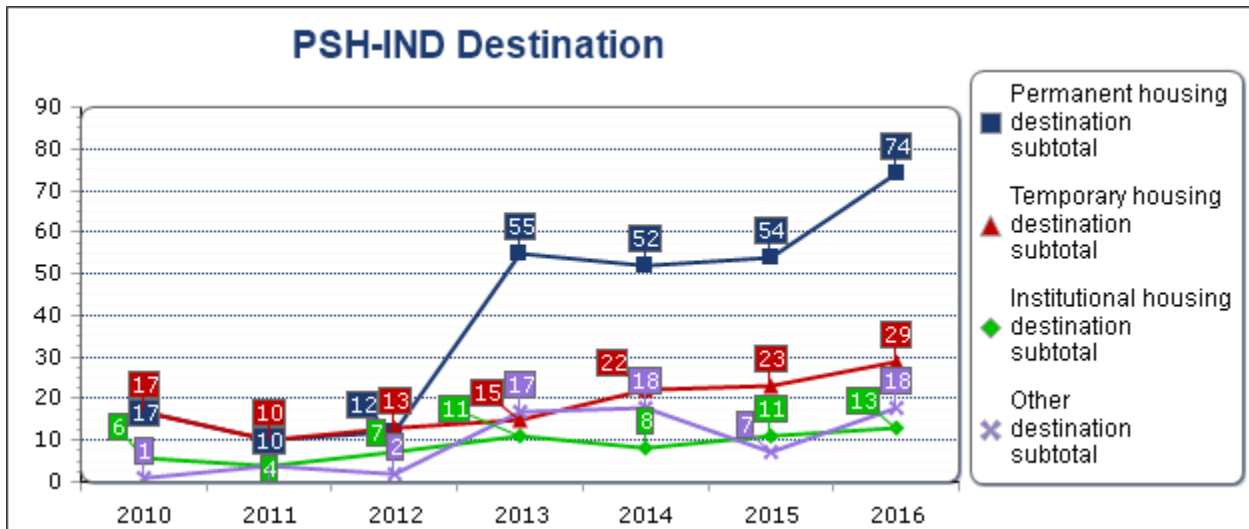
0	0
0	1
<b>0</b>	<b>6</b>

2015	2016
8	8
25	47
19	17
2	2
<b>54</b>	<b>74</b>
3	4
1	2

AHAR Destination of People Exiting Permanent Supportive Housing CoC: AZ-500 Arizona Balance of

Staying with family/friends (temporary)	11	8	6	8	15
Place not meant for habitation	1	0	3	3	2
Safe Haven	*	0	0	0	0
Hotel or motel (no voucher)	3	1	1	1	0
<b>Temporary housing destination subtotal</b>	<b>17</b>	<b>10</b>	<b>13</b>	<b>15</b>	<b>22</b>
Psychiatric facility	0	2	1	2	1
Substance abuse treatment or detox	0	0	1	1	1
Hospital (non-psychiatric)	3	1	1	2	1
Jail, prison, or juvenile detention	3	1	4	6	4
Foster care home	0	0	0	0	1
<b>Institutional housing destination subtotal</b>	<b>6</b>	<b>4</b>	<b>7</b>	<b>11</b>	<b>8</b>
Deceased	*	0	2	10	7
Other living arrangement	0	4	0	7	5
Missing this information	1	0	0	0	6
<b>Other destination subtotal</b>	<b>1</b>	<b>4</b>	<b>2</b>	<b>17</b>	<b>18</b>

\*No data entered or status is not Confirmed and Usable.



AHAR Destination of People Exiting Permanent Supportive Housing CoC: AZ-500 Arizona Balance of

12	16
4	7
0	0
3	0
<b>23</b>	<b>29</b>

0	0
2	1
4	3
5	9
0	0
<b>11</b>	<b>13</b>

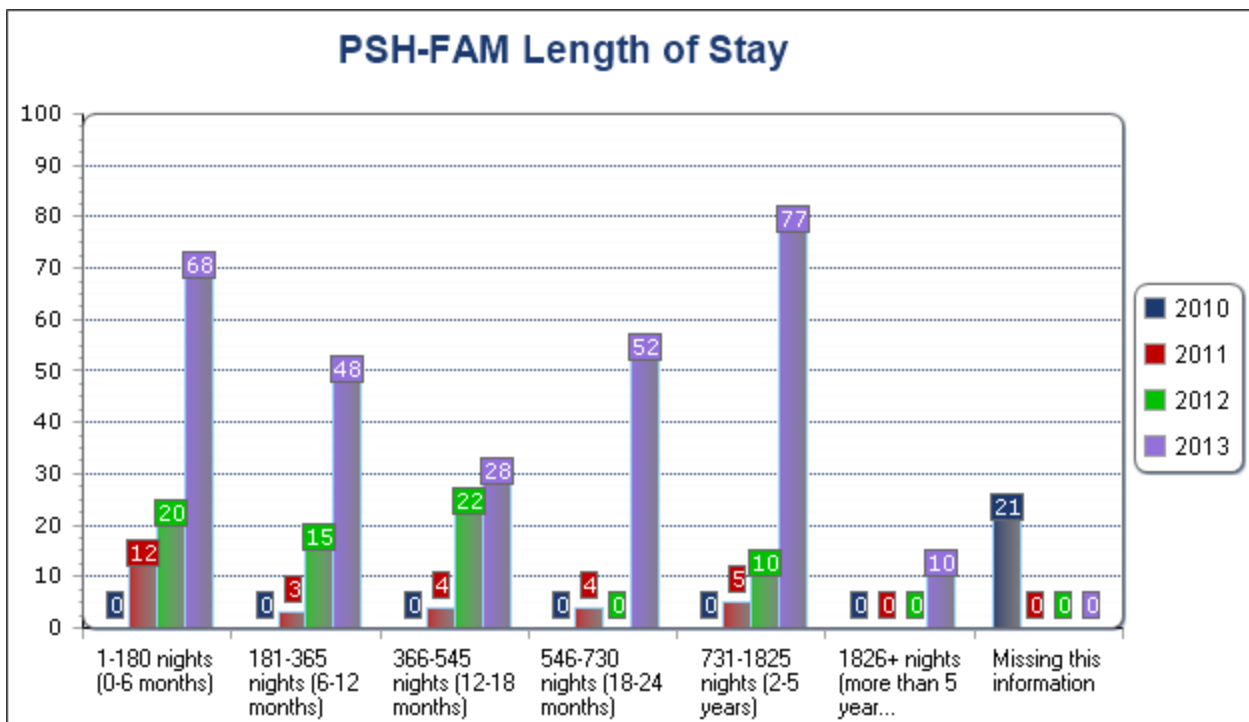
6	10
1	3
0	5
<b>7</b>	<b>18</b>

## AHAR Length of Stay in Permanent Supportive Housing CoC: AZ-500 Arizona Balance of State CoC

### Length of Stay for Families in Permanent Supportive Housing

This table includes data about total length of stay in permanent supportive housing for people in households with at least one adult and one child during the AHAR reporting period.

Length of Stay	2010	2011	2012	2013	2014
1-180 nights (0-6 months)	0	12	20	68	50
181-365 nights (6-12 months)	0	3	15	48	93
366-545 nights (12-18 months)	0	4	22	28	50
546-730 nights (18-24 months)	0	4	0	52	19
731-1825 nights (2-5 years)	0	5	10	77	98
1826+ nights (more than 5 years)	0	0	0	10	14
Missing this information	21	0	0	0	0



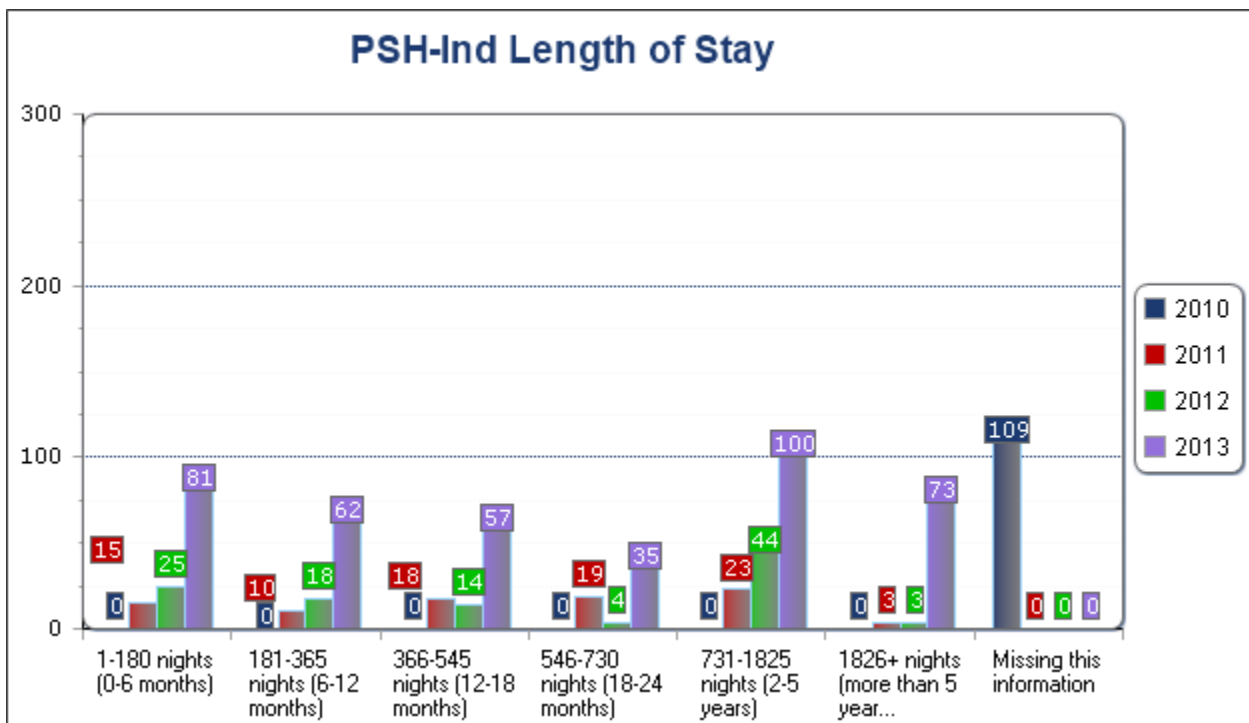
AHAR Length of Stay in Permanent Supportive Housing CoC: AZ-500 Arizona Balance of State CoC

2015	2016
7	90
21	48
36	11
38	30
72	144
4	38
0	0

### Length of Stay for Individuals in Permanent Supportive Housing

This table includes data about total length of stay in permanent supportive housing for people in households comprised of only adults or only children during the AHAR reporting period.

Length of Stay	2010	2011	2012	2013	2014
1-180 nights (0-6 months)	0	15	25	81	84
181-365 nights (6-12 months)	0	10	18	62	79
366-545 nights (12-18 months)	0	18	14	57	64
546-730 nights (18-24 months)	0	19	4	35	49
731-1825 nights (2-5 years)	0	23	44	100	128
1826+ nights (more than 5 years)	0	3	3	73	86
Missing this information	109	0	0	0	0





AHAR Length of Stay in Permanent Supportive Housing CoC: AZ-500 Arizona Balance of State CoC

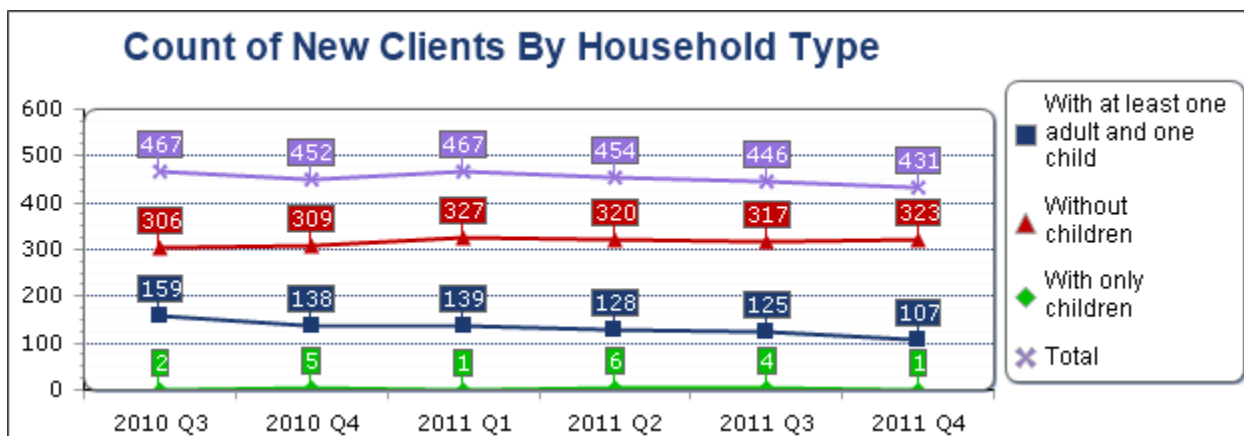
2015	2016
50	88
44	66
42	31
41	37
98	150
64	111
0	0

## Pulse Counts of New Clients CoC: AZ-500 Arizona Balance of State CoC

### Pulse Counts of New Clients

This table includes data on all persons who entered an emergency shelter or transitional housing program during the quarter and had not received any homeless residential services in the 15 months prior to the client's first program entry date during the quarter. Q1 runs from January through March, Q2 from April through June, Q3 from July through August, and Q4 from September through December.

Quarter	All people in households...			Total
	with at least one adult and one child	without children	with only children	
2010 Quarter 3	159	306	2	467
2010 Quarter 4	138	309	5	452
2011 Quarter 1	139	327	1	467
2011 Quarter 2	128	320	6	454
2011 Quarter 3	125	317	4	446
2011 Quarter 4	107	323	1	431



### Pulse Counts of New Households

This table includes data on households entering an emergency shelter or transitional housing program during the quarter which included at least one person who had not received any homeless residential services in the 15 months prior to his/her first program entry date during the quarter. Q1 runs from January through March, Q2 from April through June, Q3 from July through August, and Q4 from September through December.

Pulse Counts of New Clients CoC: AZ-500 Arizona Balance of State CoC

Quarter	All households...			Total
	with at least one adult and one child	without children	with only children	
2010 Quarter 3	40	306	2	348
2010 Quarter 4	37	309	5	351
2011 Quarter 1	34	321	1	356
2011 Quarter 2	36	302	6	344
2011 Quarter 3	33	298	4	335
2011 Quarter 4	29	245	1	275

