

MARIBOR

MÜHENDİSLİK

TABLE OF CONTENT

⊕ **ENGINEERING**

⊕ **MANUFACTURING**

⊕ **ASSEMBLY**

⊕ **CONSULTANCY**



COMPANY INTRODUCTION

COMPANY CAPABILITIES

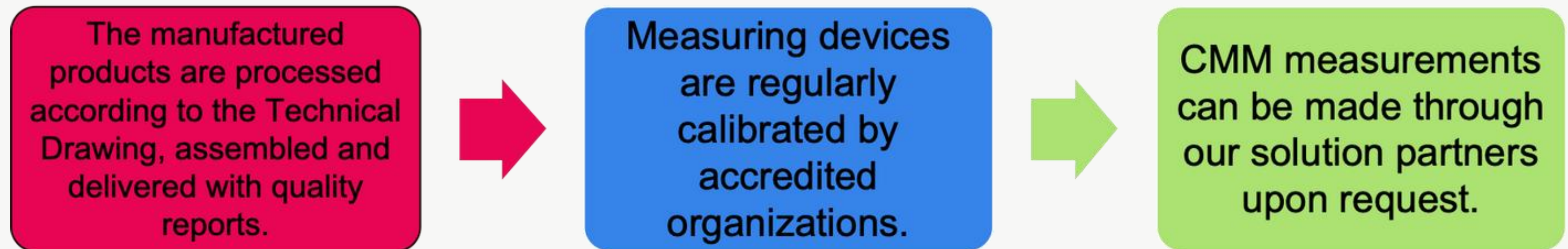
- HT Engineering was established in 2023 to evaluate its 16 years of industry experience. Our company, which has vast experience in Machine Design and Manufacturing, Product Design and Manufacturing, Mold Design, Fixture Design and Manufacturing, was established with a strong Engineering infrastructure.
- Apart from these studies, it can produce in the field of welded manufacturing and assembly. At the same time, with its solution partnership, Özkan Makine can also provide production support by expanding its production infrastructure with CNC machining centers, CNC lathes, gear manufacturing machines.
- The company is an engineering company and consists of experienced personnel, technicians and engineers. It has the theoretical and technical infrastructure capacity to produce solutions for projects in different sectors.



COMPANY CAPABILITIES

QUALITY AND ASSURANCE

Maribor Engineering aims to be a solution partner that provides added value to companies by contributing to the companies it serves with its innovative engineering approach as well as manufacturing support, and by revealing the innovative aspects of the companies.



COMPANY CAPABILITIES

DESIGN AND ANALYSIS CAPACITY

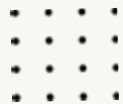
Maribor Engineering; has adopted customer satisfaction and staying loyal to delivery times as its service approach by meeting the machinery manufacturing needs of industrial sectors.



COMPANY CAPABILITIES

MACHINE CAPACITY

MACHINE PARK		
LATHE AND GEAR MACHINE	MILLING CENTER	WELDING PROCESSES
CNC Lathe: Ø400 mm	CNC Vertical Machining: 850 x 650 mm	TIG Welding Machine
Universal Gear Machine: Ø1500 mm	CNC Vertical Machining: 600x400 mm	MIG Welding Machine
Keyway Opening Machine		Electric Arc Welding Machine



COMPANY CAPABILITIES

MACHINE CAPACITY

600X400

CNC Vertical Machining Center



850X650

CNC Vertical Machining Center



**Ø400 CNC
LATHE**



COMPANY CAPABILITIES

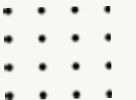
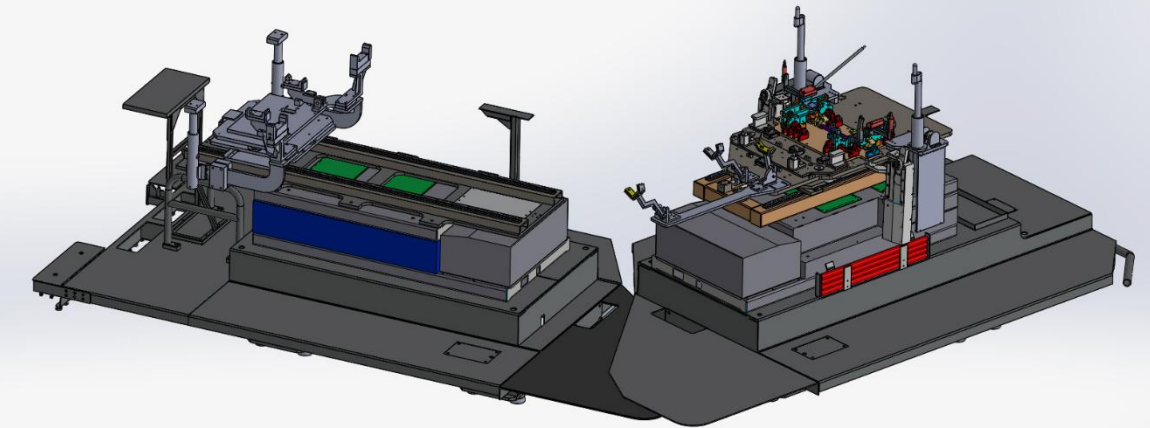
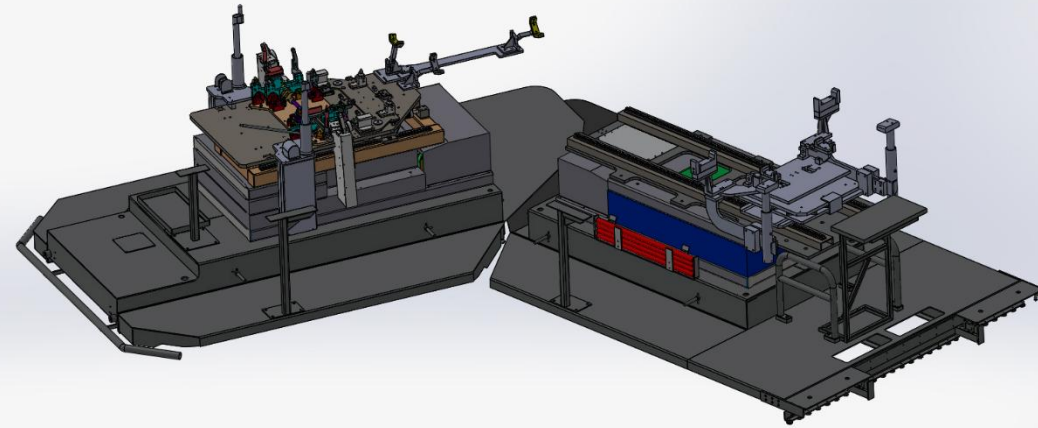
MACHINE CAPACITY

ENGINEERING AND DESIGN SERVICES	MACHINERY MANUFACTURING	CONTRACT MANUFACTURING	FIXTURE DESIGN AND MANUFACTURING	CONVEYOR DESIGN AND MANUFACTURING	PRODUCT ENGINEERING	MOLD DESIGN AND MANUFACTURING	GEAR DESIGN AND MANUFACTURING	PROTOTYPE MANUFACTURING
Automotive industry	Automotive industry	Automotive industry	Automotive industry	Automotive industry	Automotive industry	Metal injection molding	Automotive industry	Automotive industry
Heavy industry sector (Iron-Steel, Rolling Mills)	Heavy industry sector (Iron-Steel, Rolling Mills)	Heavy industry sector (Iron-Steel, Rolling Mills)	Heavy industry sector (Iron-Steel, Rolling Mills)	Heavy industry sector (Iron-Steel, Rolling Mills)	Heavy industry sector (Iron-Steel, Rolling Mills)	Plastic injection molding	Heavy industry sector (Iron-Steel, Rolling Mills)	Heavy industry sector (Iron-Steel, Rolling Mills)
Mining industry	Mining industry	Mining industry	Mining industry	Mining industry	Mining industry	Sheet metal molding		
Food industry	Food industry	Food industry	Food industry	Food industry	Food industry		Food industry	
Chemical industry	Chemical industry	Chemical industry	Chemical industry	Chemical industry	Chemical industry		Chemical industry	
Defense and Aviation	Defense and Aviation	Defense and Aviation	Defense and Aviation	Defense and Aviation	Defense and Aviation		Defense and Aviation	Defense and Aviation



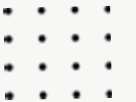
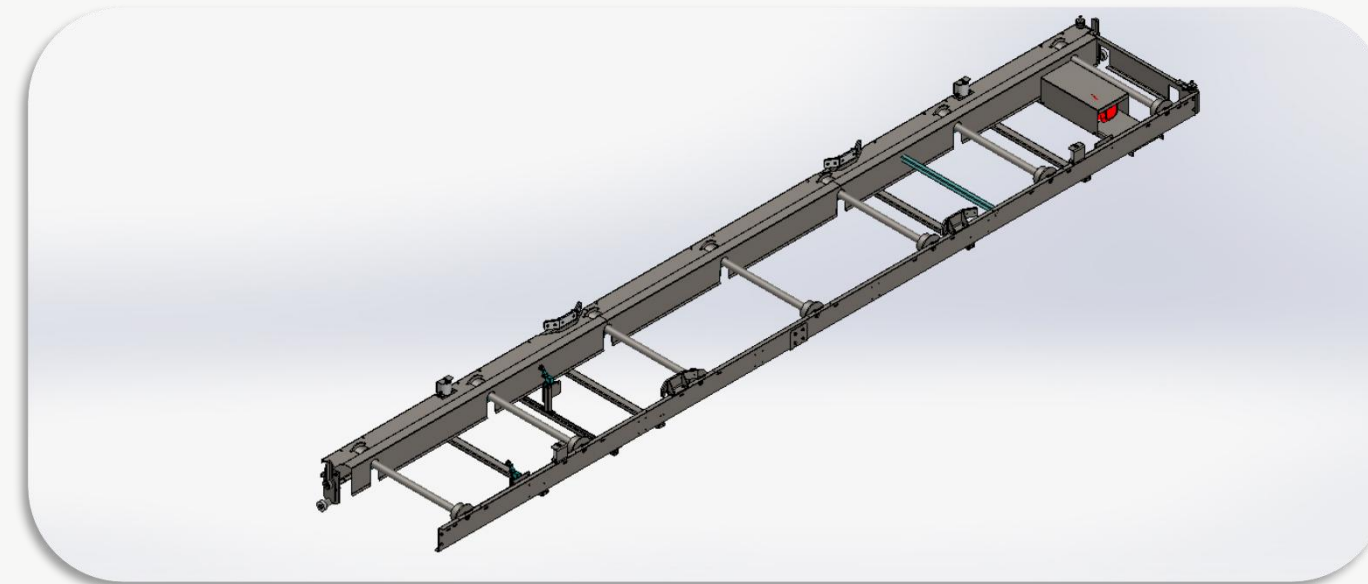
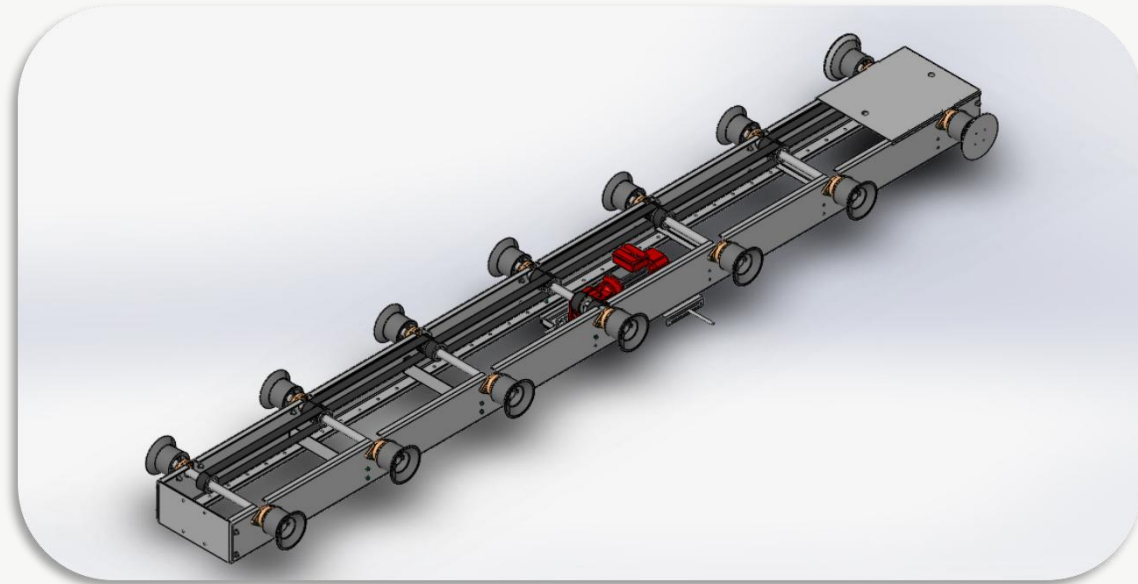
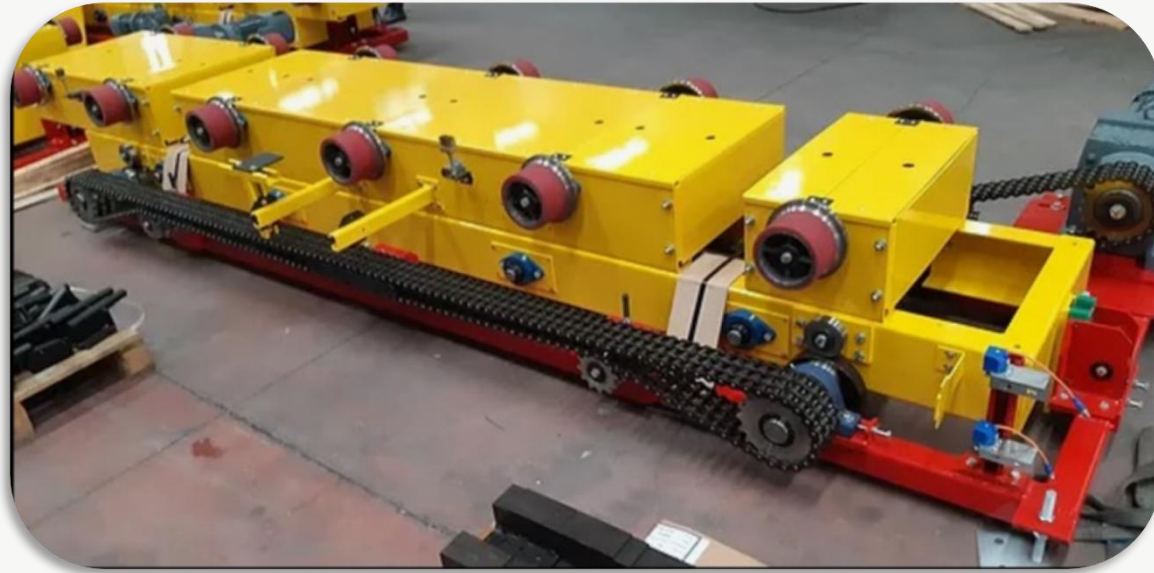
PROJECTS

PROJECTS AND DESIGN AND MANUFACTURE Dolly Systems



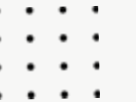
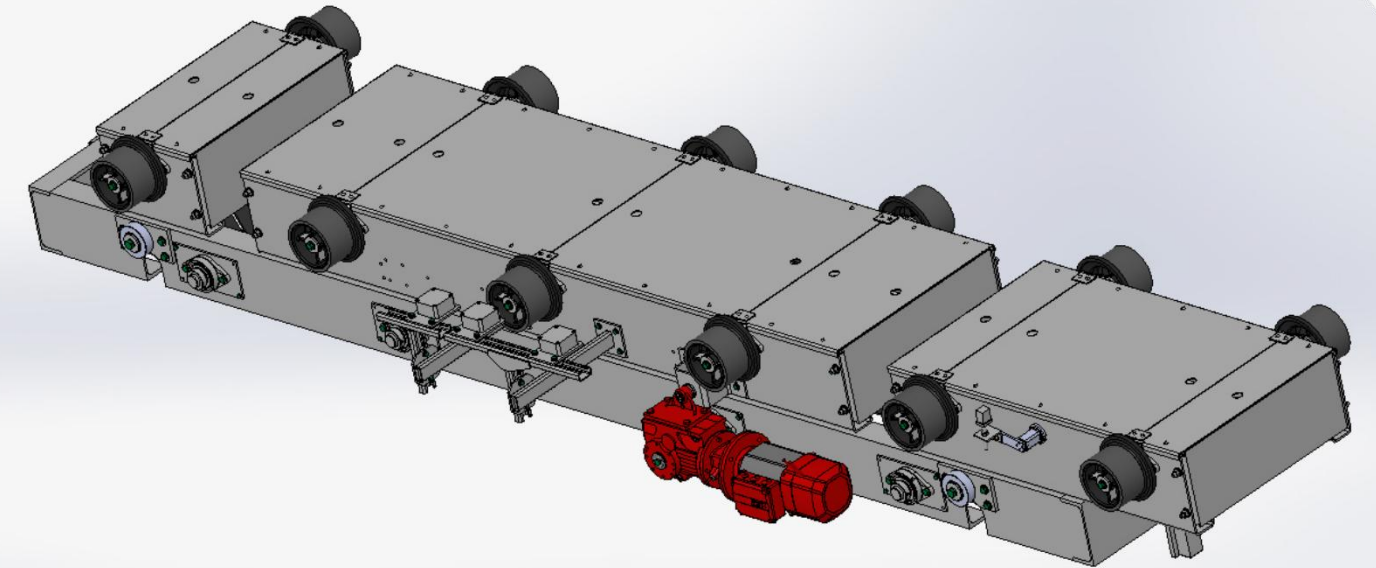
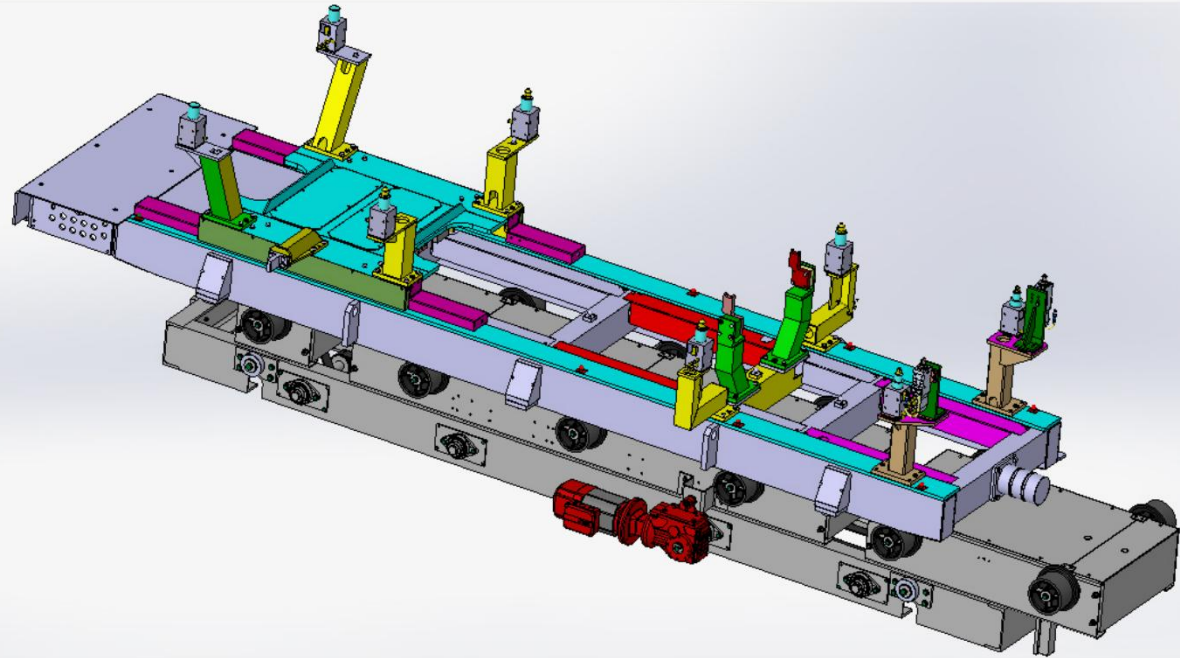
PROJECTS

PROJECTS AND DESIGN AND MANUFACTURE Conveyor Systems



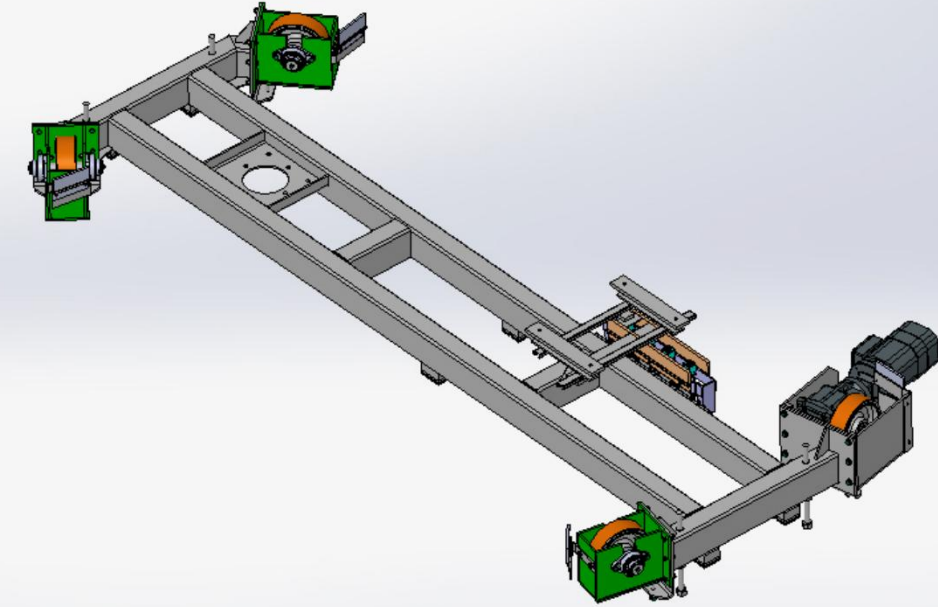
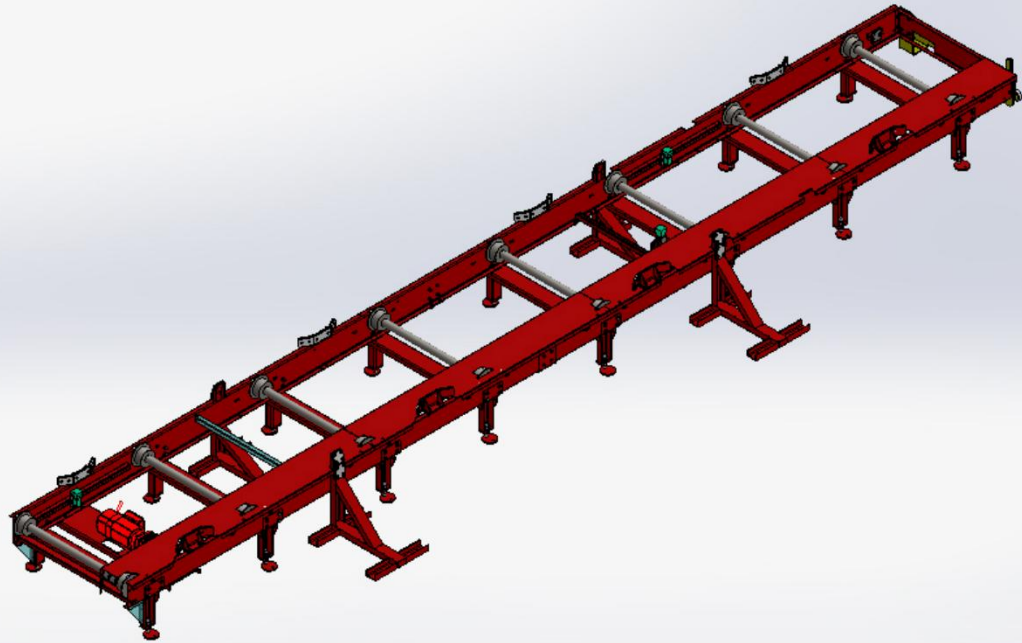
PROJECTS

PROJECTS AND DESIGN AND MANUFACTURE Conveyor Systems



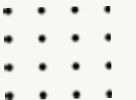
PROJECTS

PROJECTS AND DESIGN AND MANUFACTURE Paint Workshop Conveyor and Pivotan Chassis



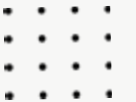
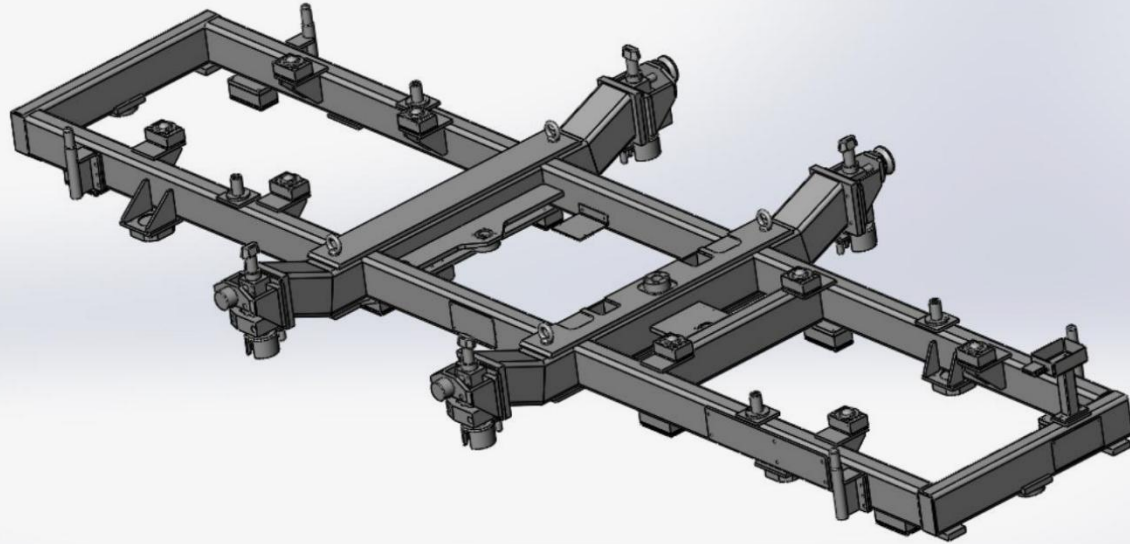
PROJECTS

PROJECTS AND DESIGN AND MANUFACTURE Lift Conveyor Systems



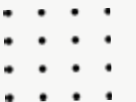
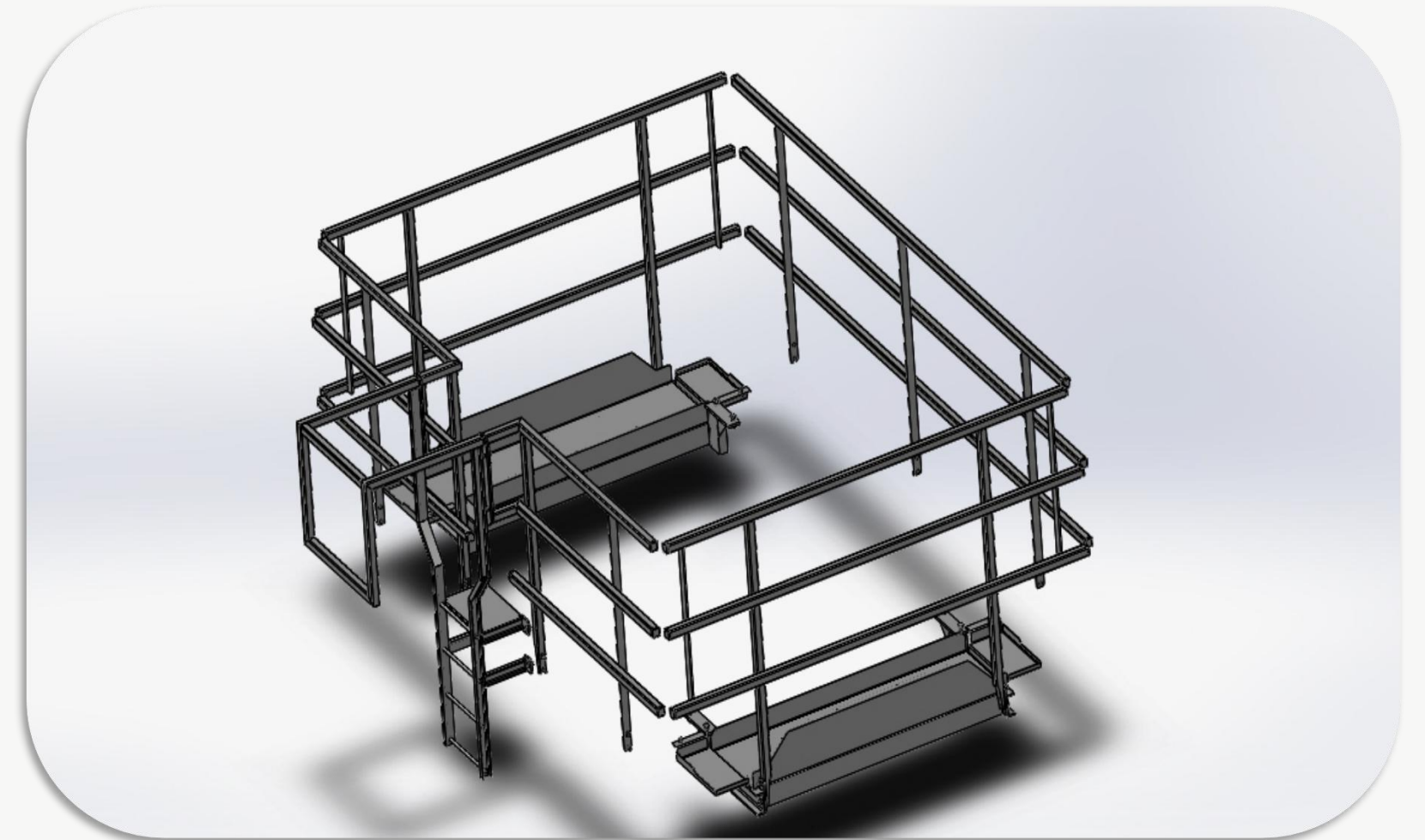
PROJECTS

PROJECTS AND DESIGN AND MANUFACTURE Mulhouse ve Sochaux Şase



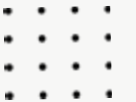
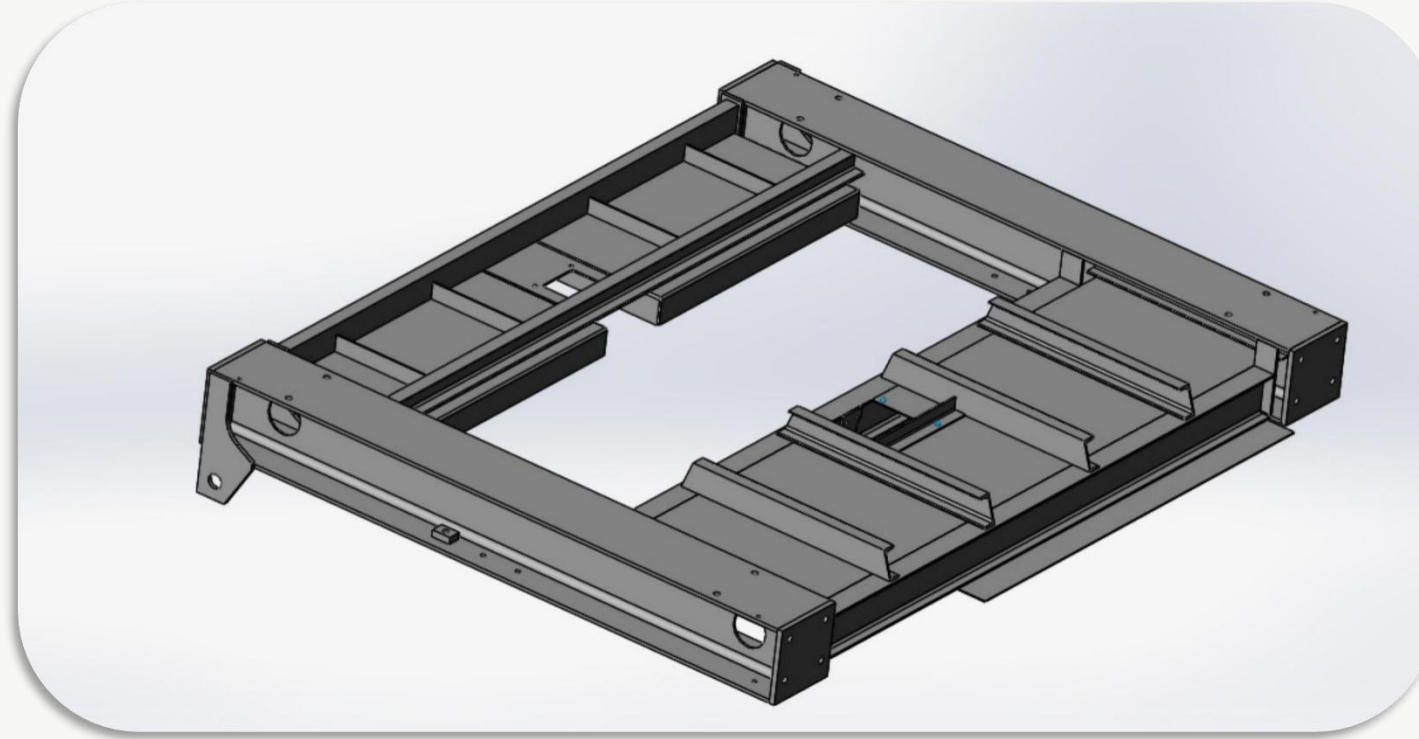
PROJECTS

PROJECTS AND DESIGN AND MANUFACTURE Freight elevator equipment



PROJECTS

PROJECTS AND DESIGN AND MANUFACTURE Freight elevator equipment



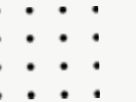
PROJECTS

PROJECTS AND DESIGN AND MANUFACTURE Freight elevator drum equipment



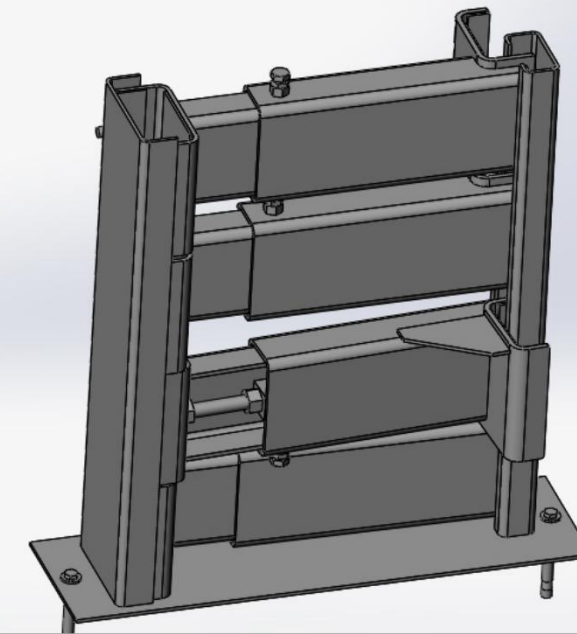
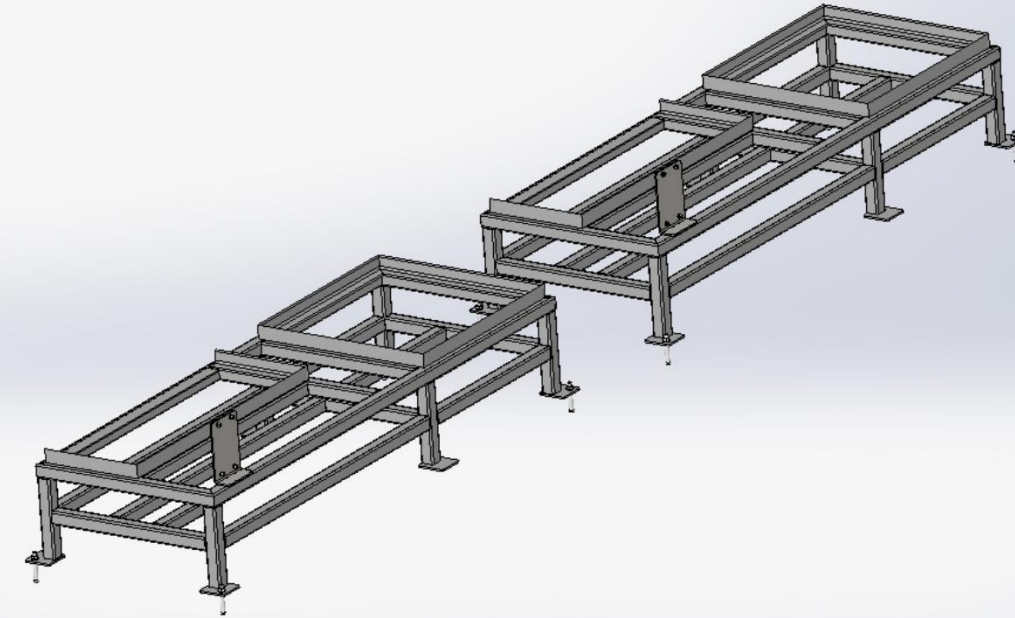
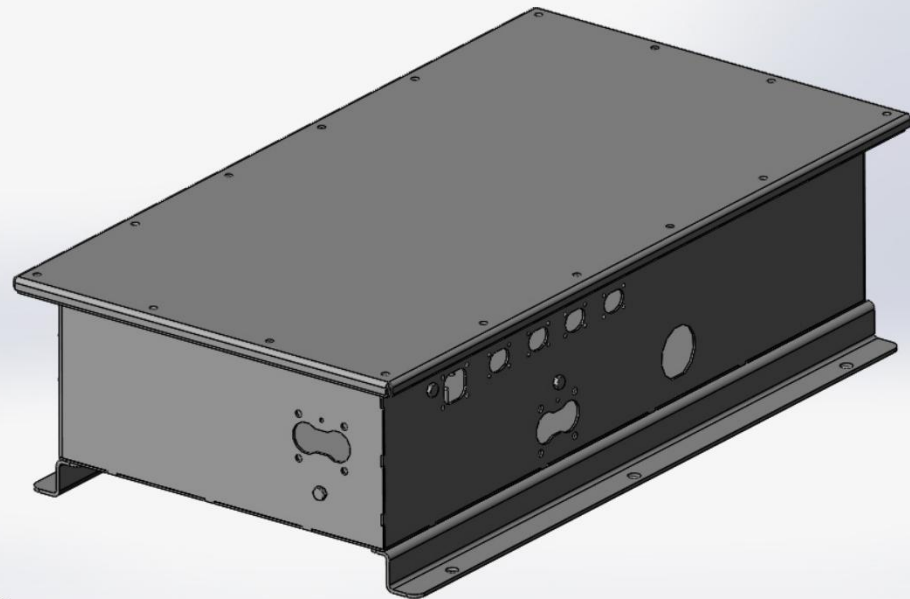
PROJECTS

PROJECTS AND DESIGN AND MANUFACTURE Welded Manufacturing



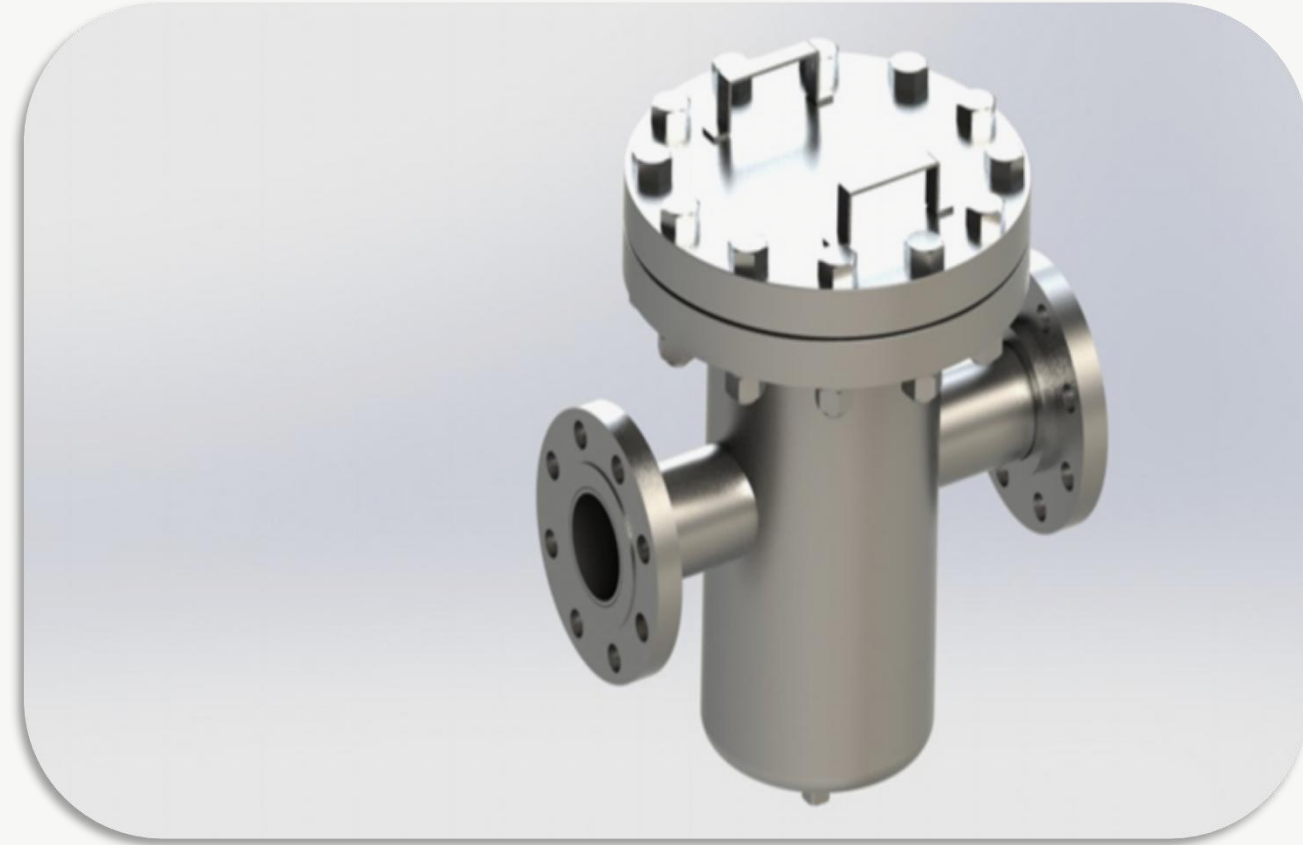
PROJECTS

PROJECTS AND DESIGN AND MANUFACTURE Welded Manufacturing



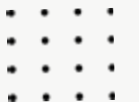
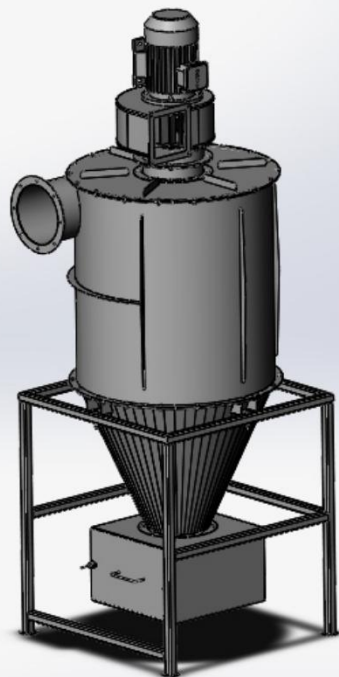
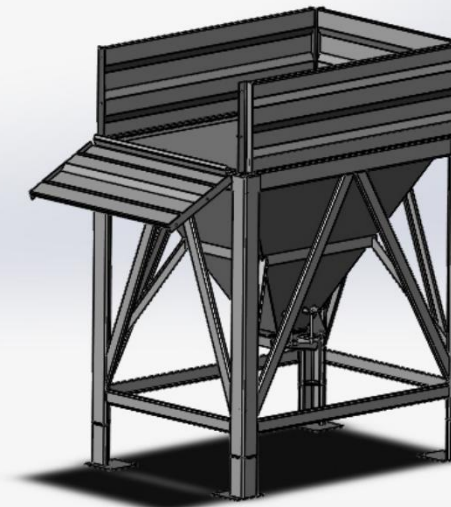
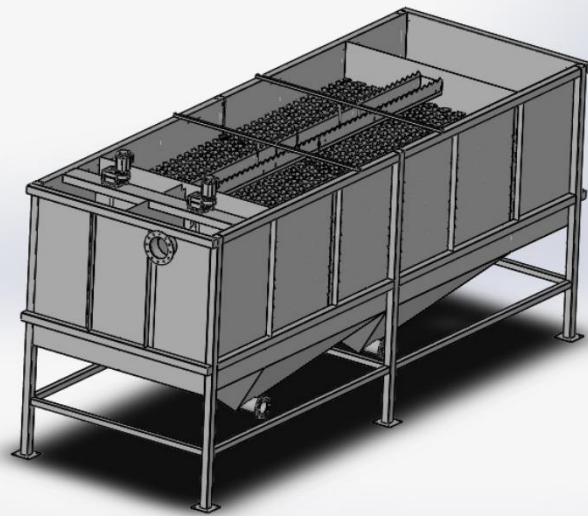
PROJECTS

PROJECTS AND DESIGN AND MANUFACTURE Mining industry equipment



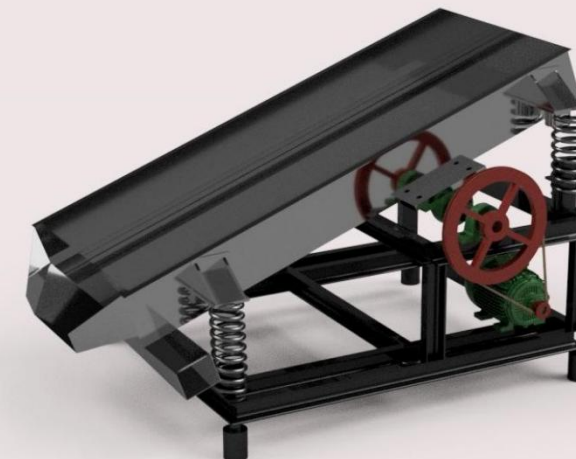
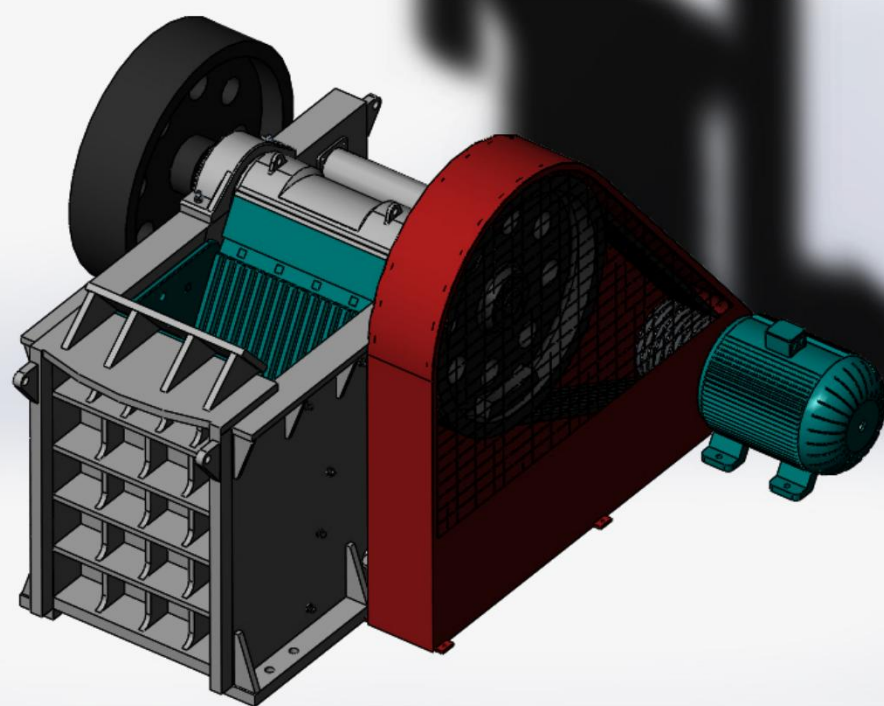
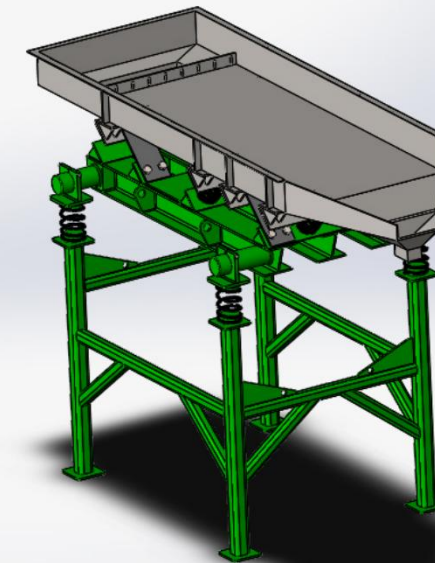
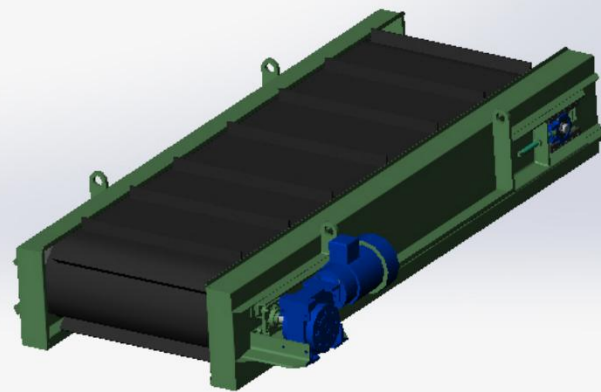
PROJECTS

PROJECTS AND DESIGN AND MANUFACTURE Mineral Processing Systems



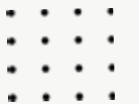
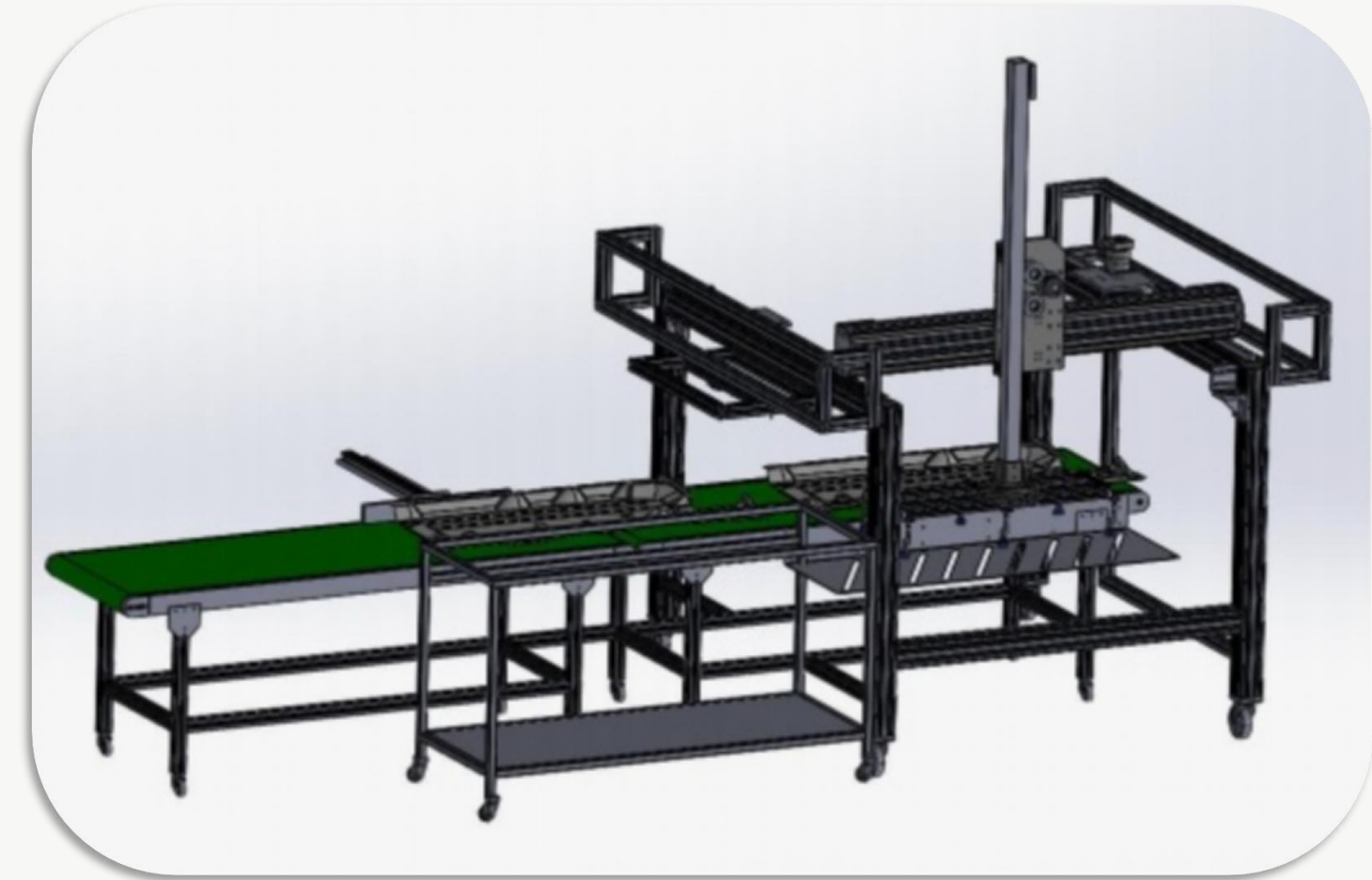
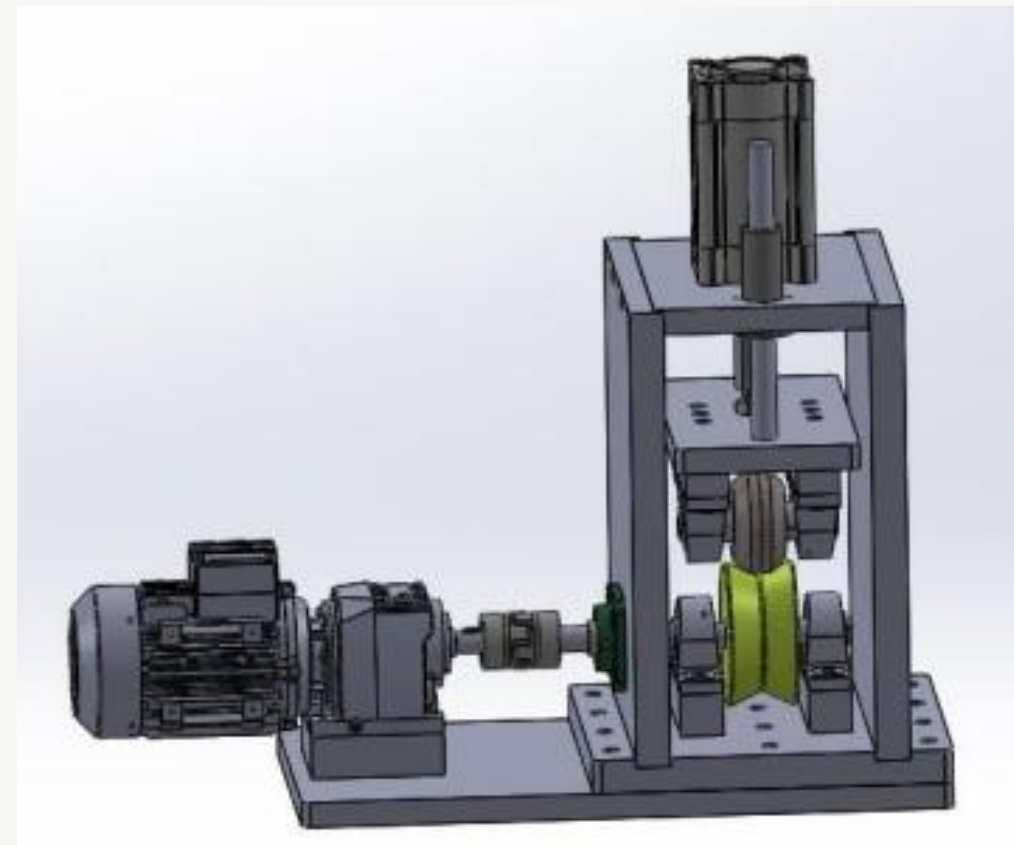
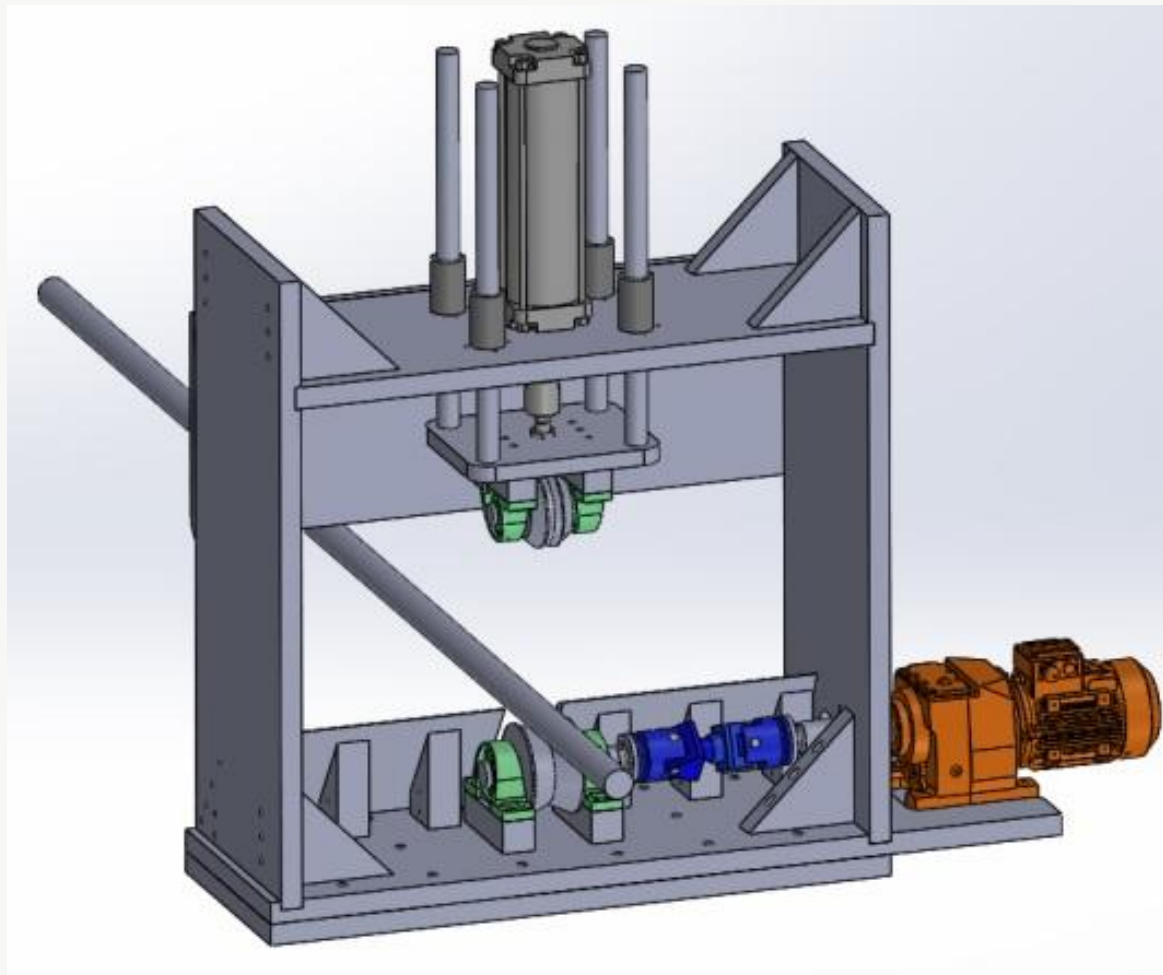
PROJECTS

PROJECTS AND DESIGN AND MANUFACTURE Mineral Processing Systems



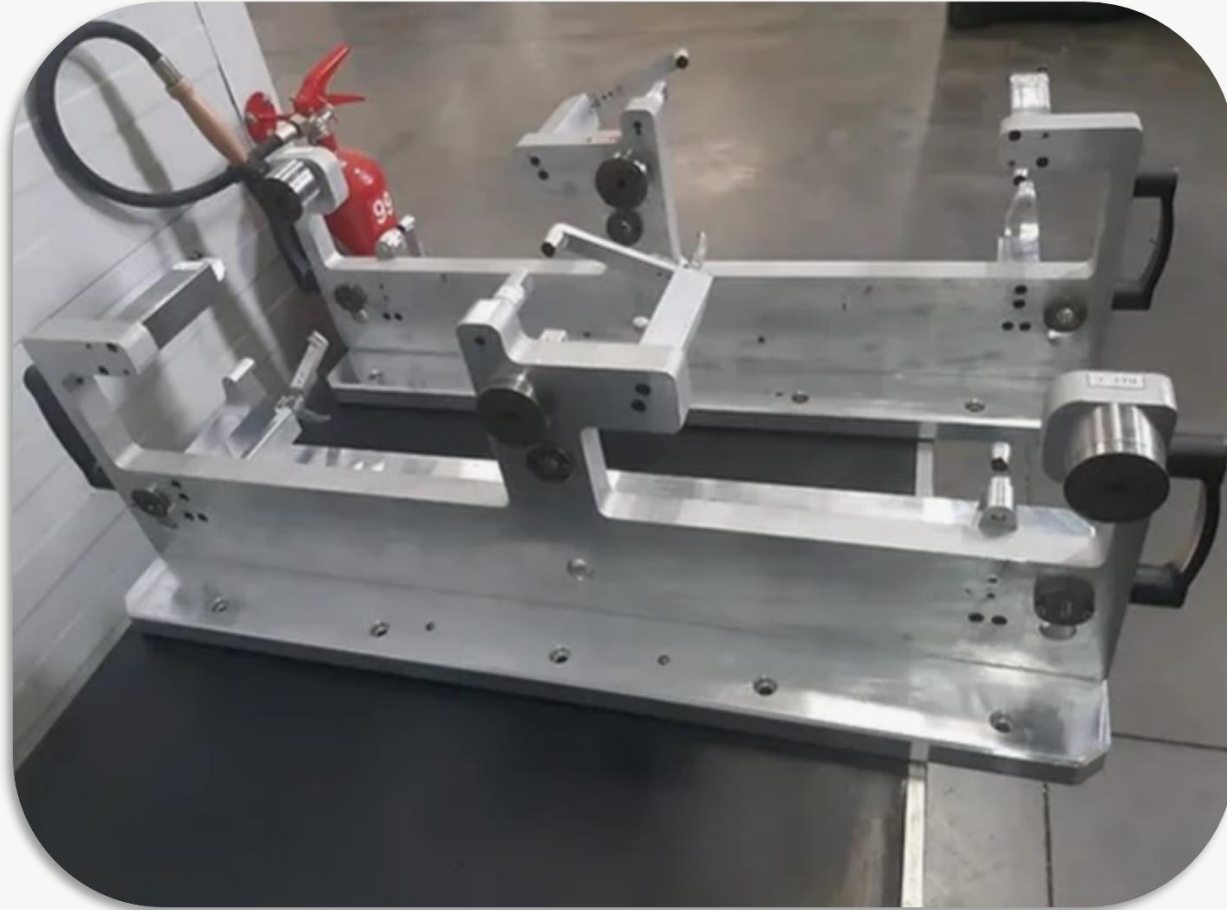
PROJECTS

PROJECTS AND DESIGN AND MANUFACTURE Rolling mill equipment



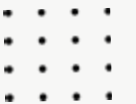
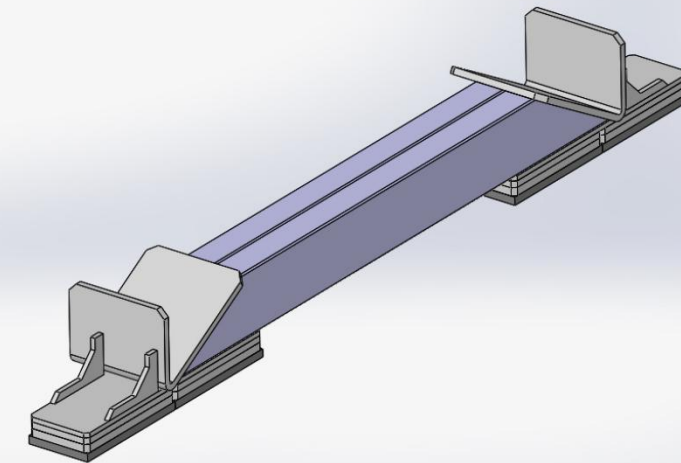
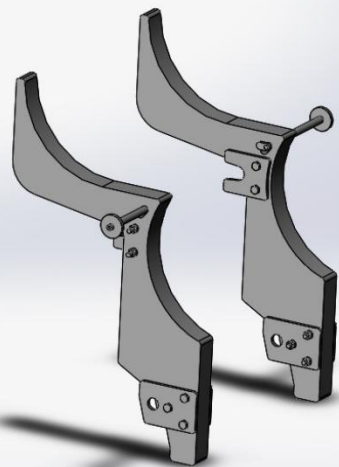
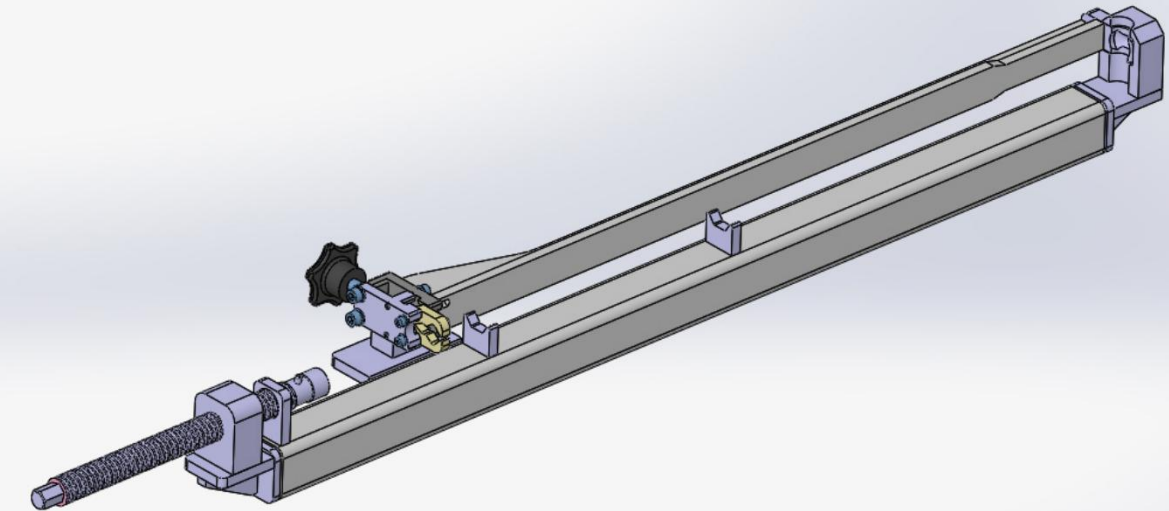
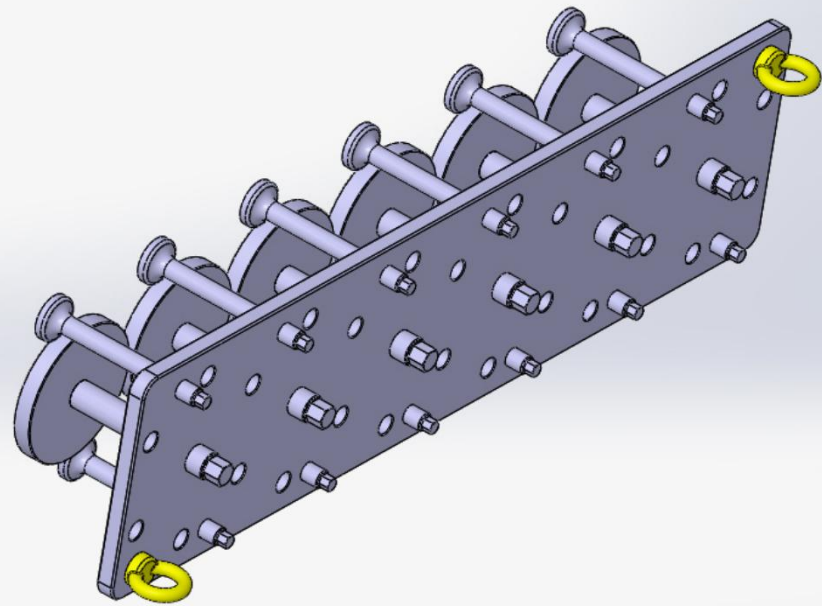
PROJECTS

PROJECTS AND DESIGN AND MANUFACTURE Measuring Fixtures



PROJECTS

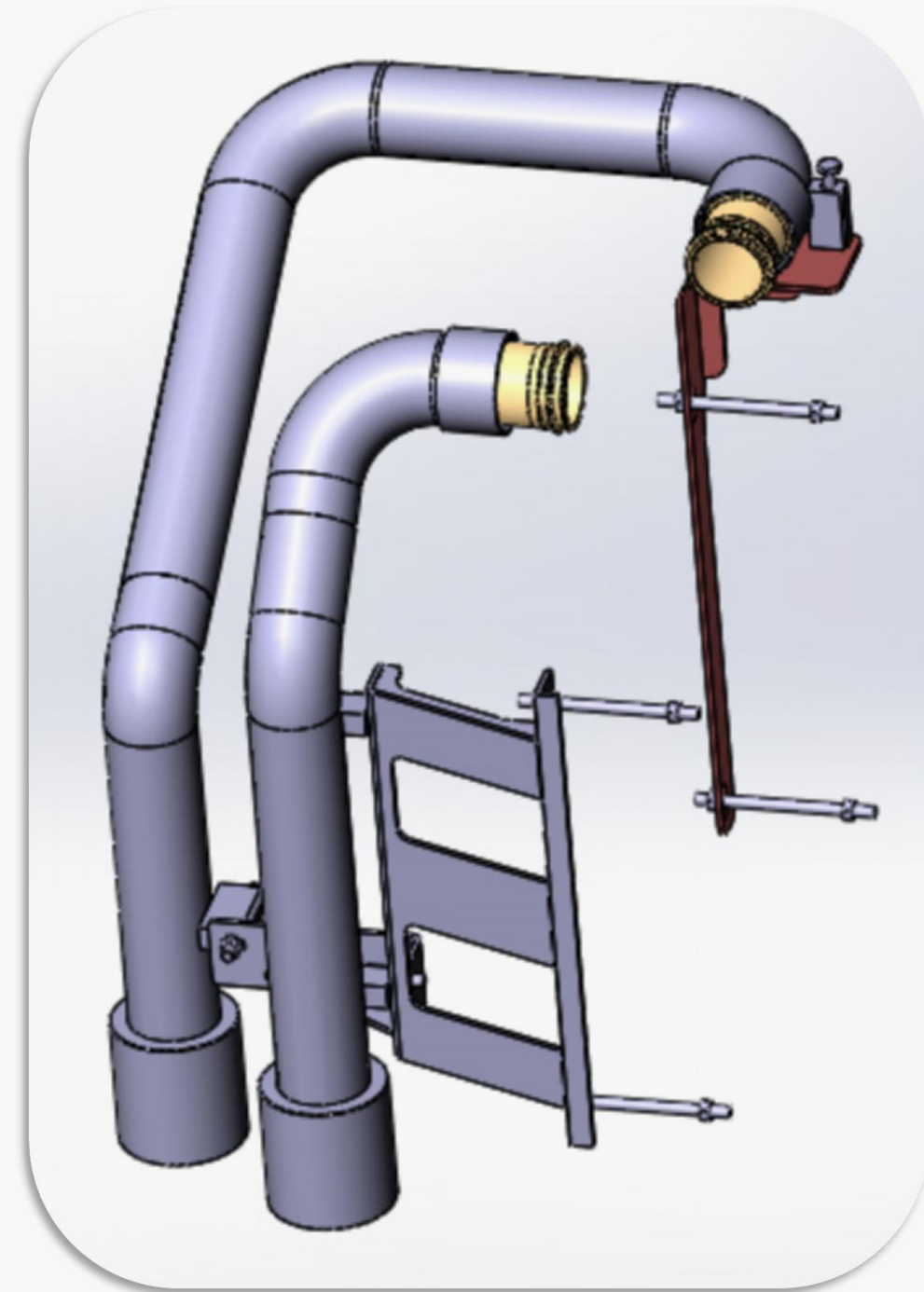
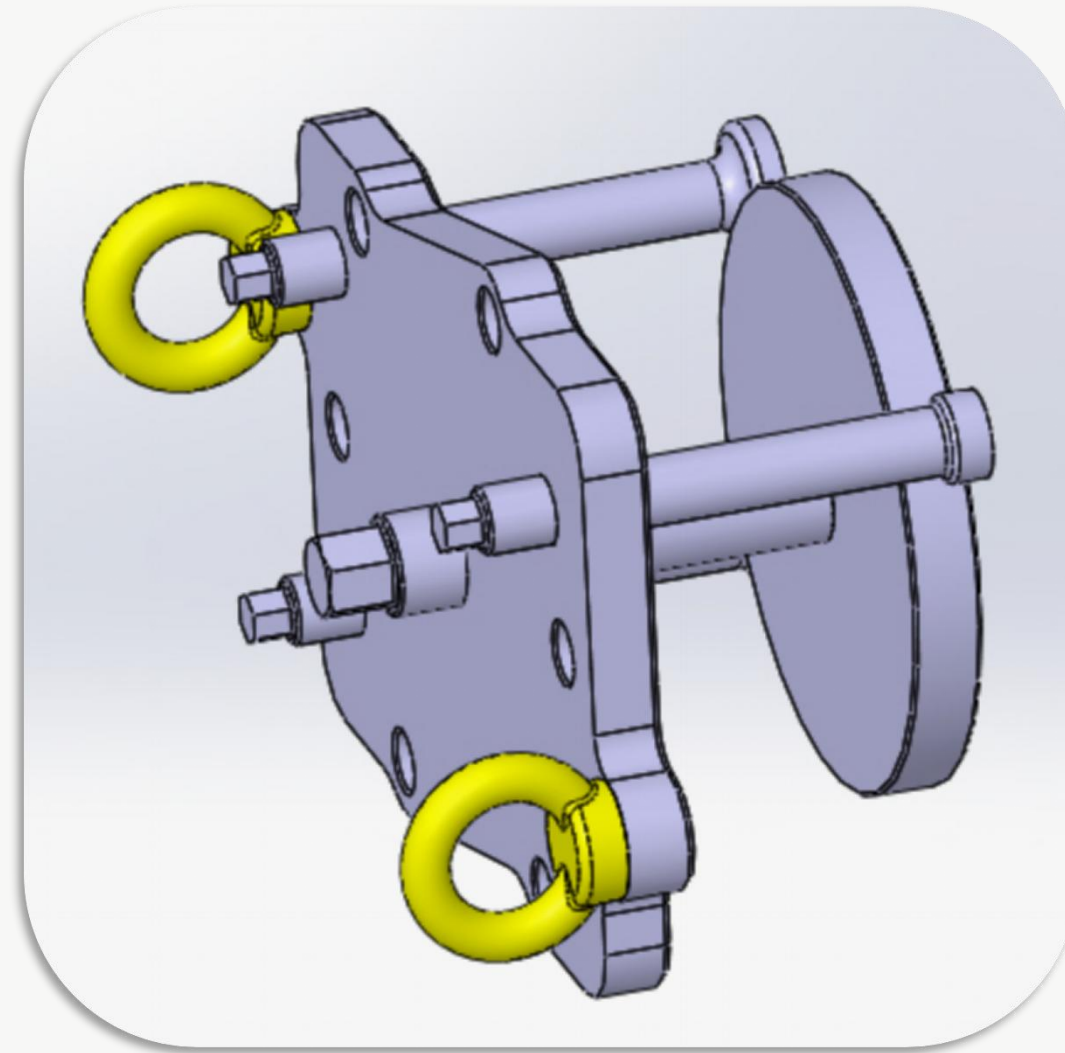
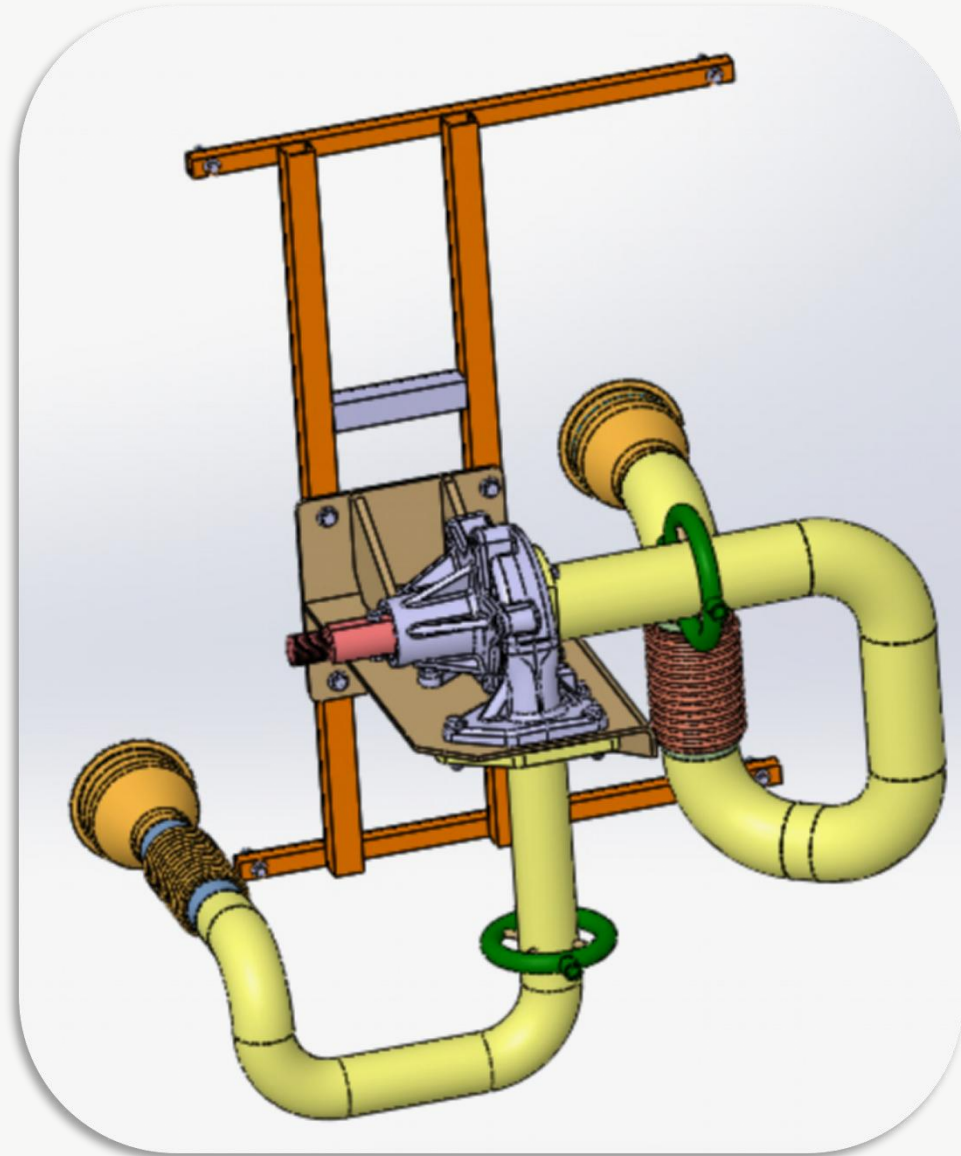
PROJECTS AND DESIGN AND MANUFACTURE Steering Wheel Mounting Device



PROJECTS

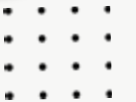
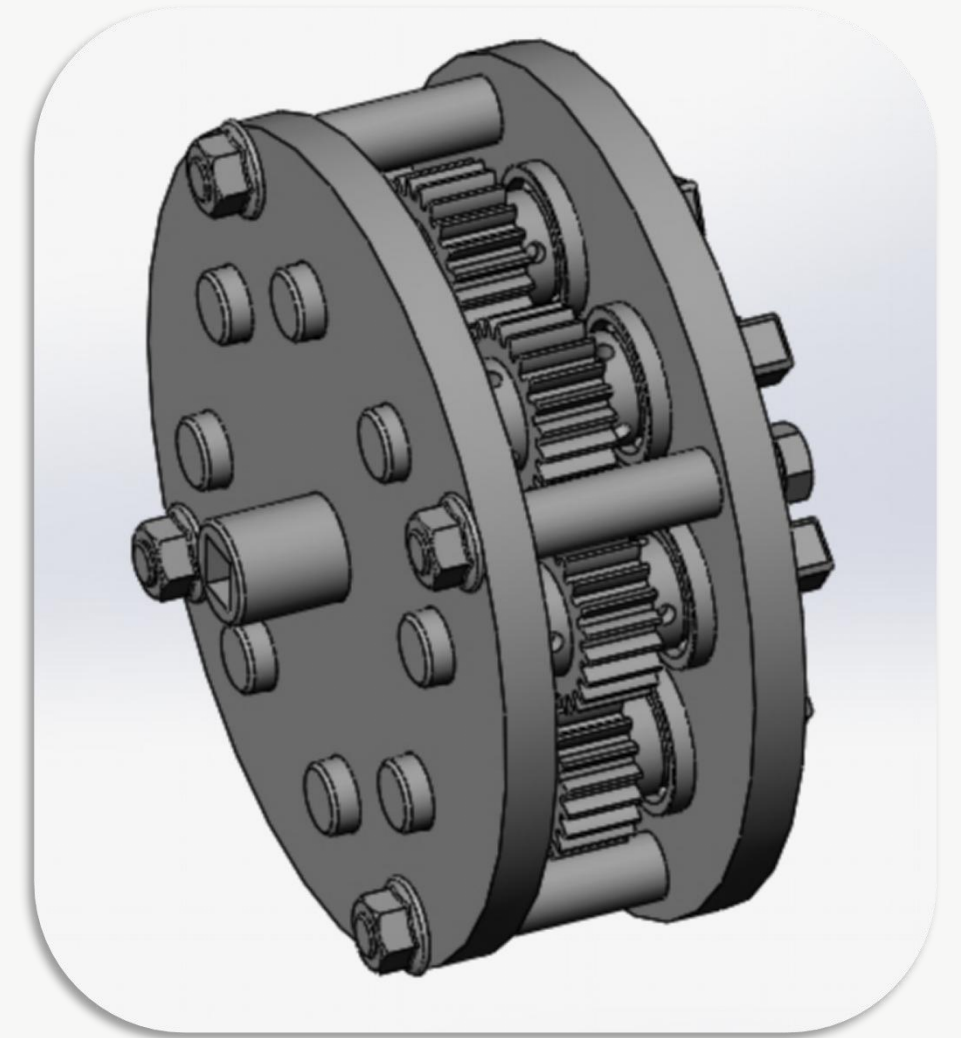
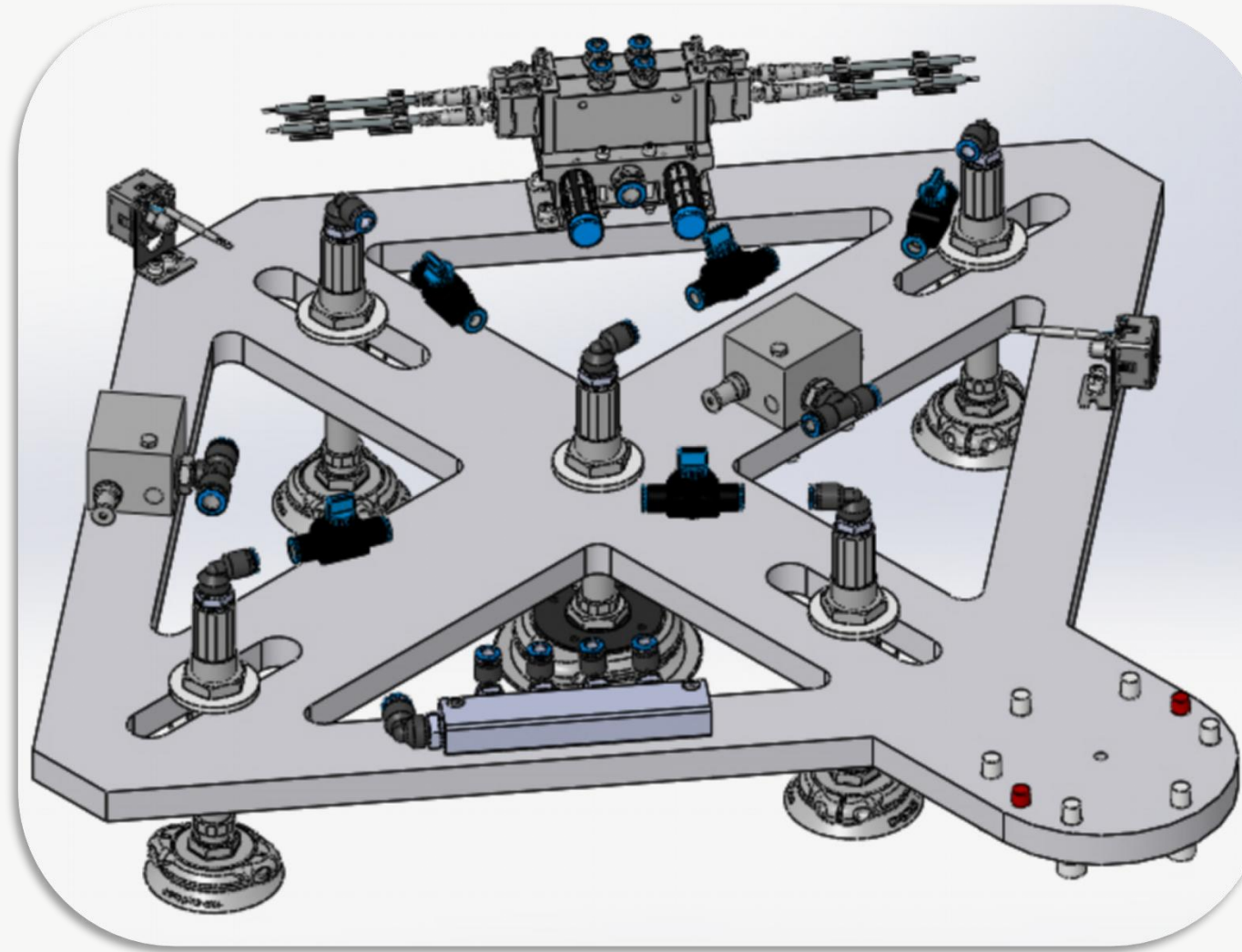
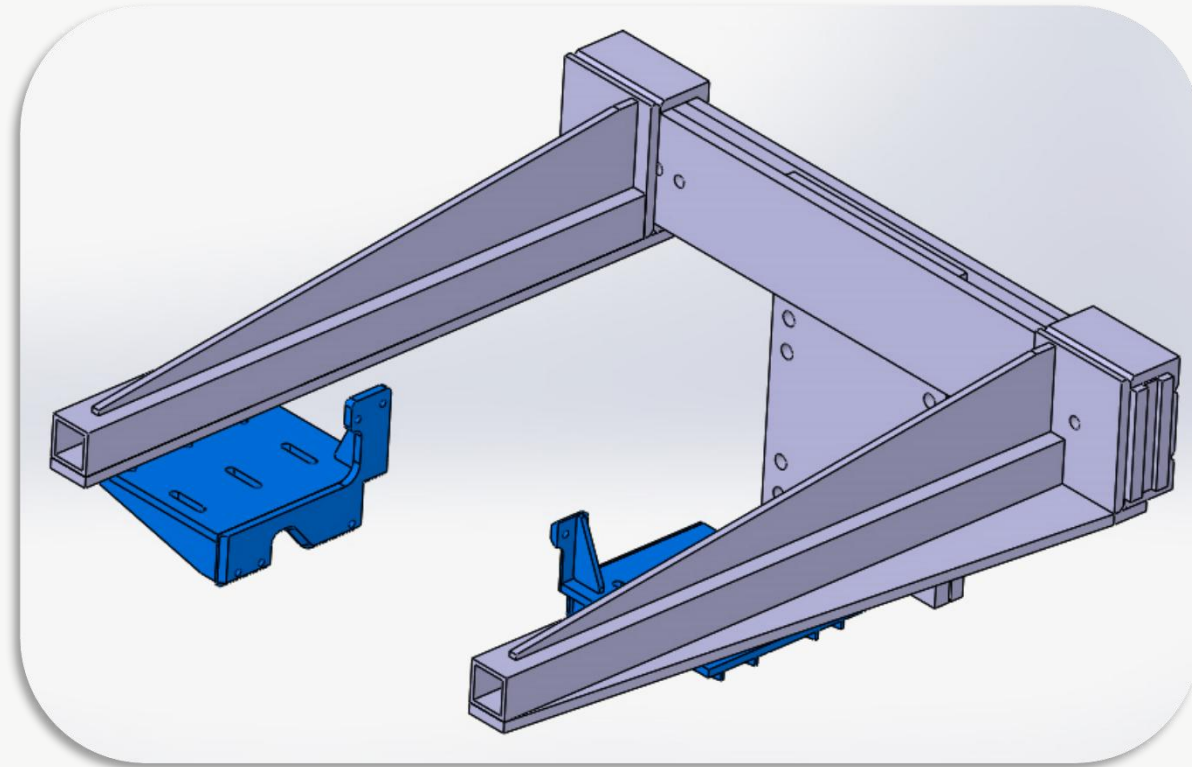
PROJECTS AND DESIGN AND MANUFACTURE

Water Pump Test Rig - Test Apparatus - Exhaust Pipe Connection Fixture



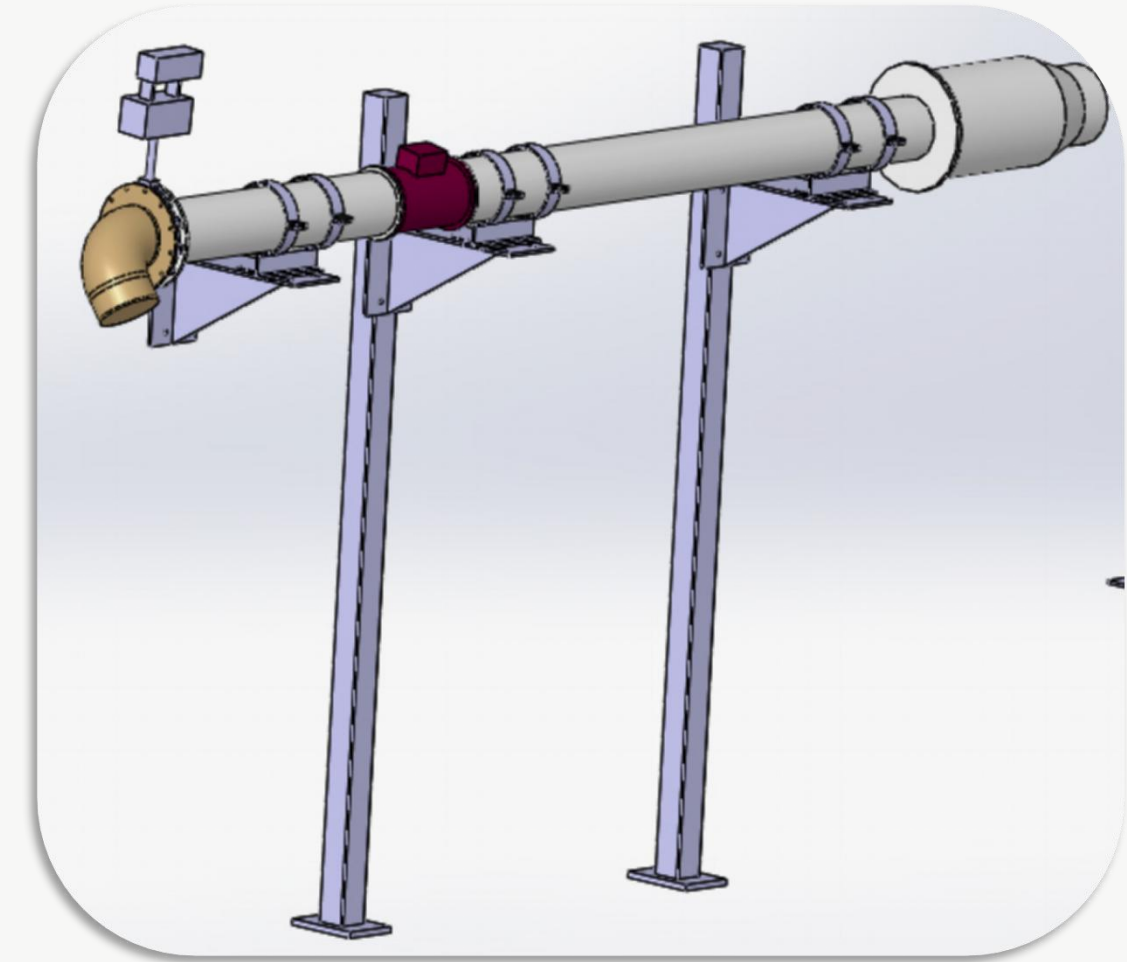
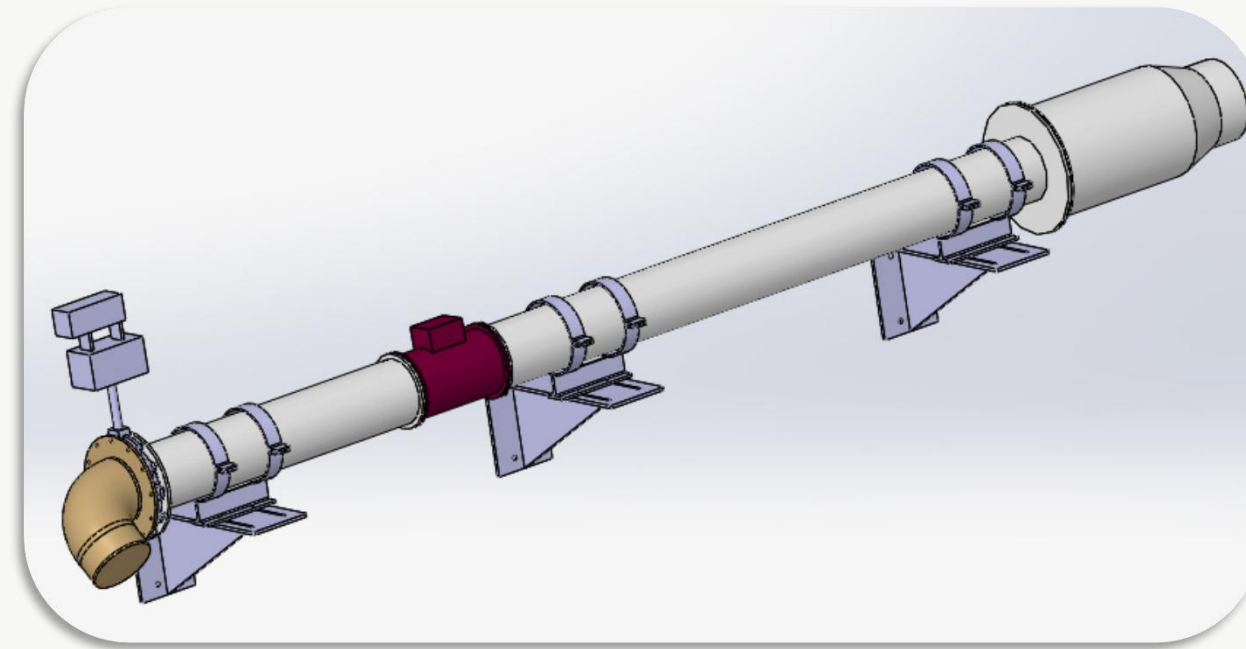
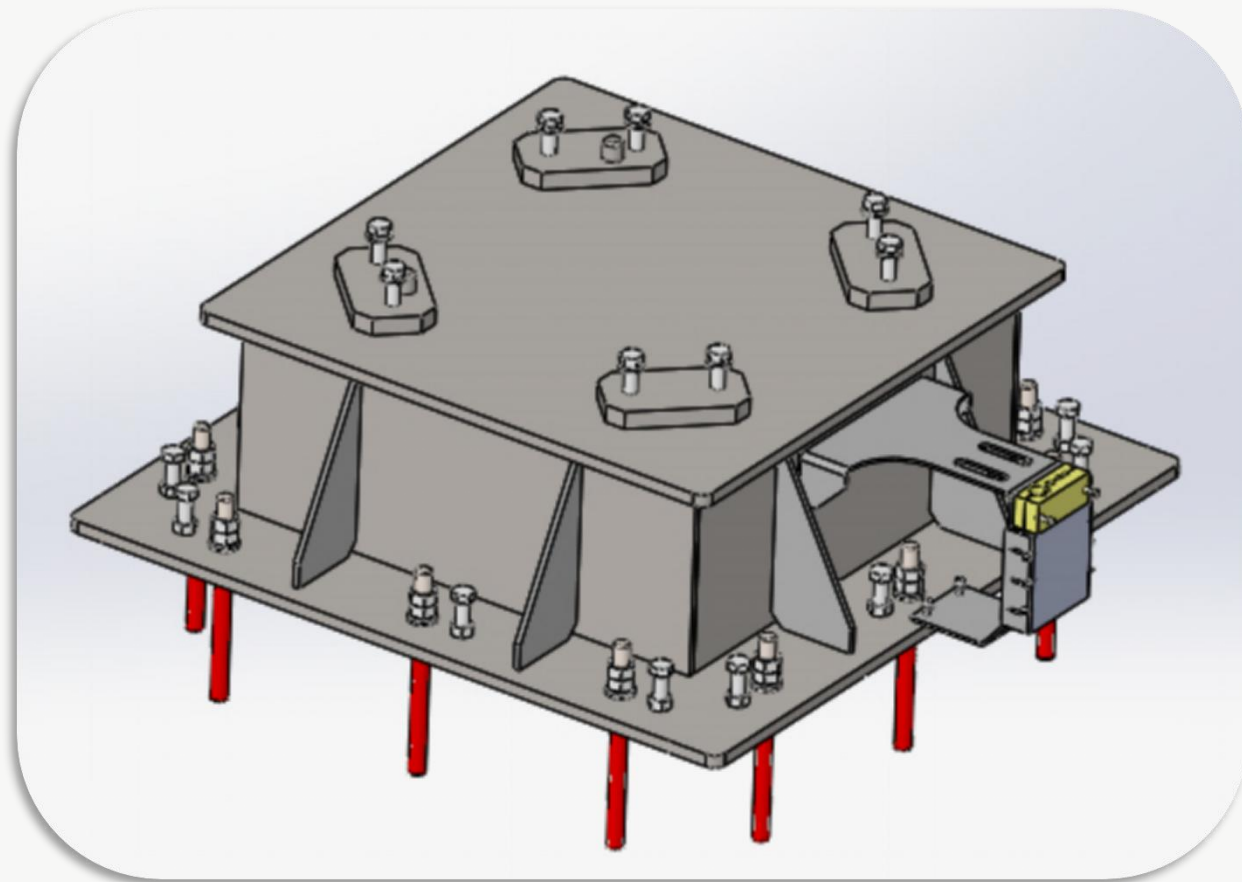
PROJECTS

PROJECTS AND DESIGN AND MANUFACTURE Collection Fixture - Robotic Platform - Shaft-hub Assembly



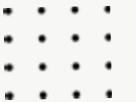
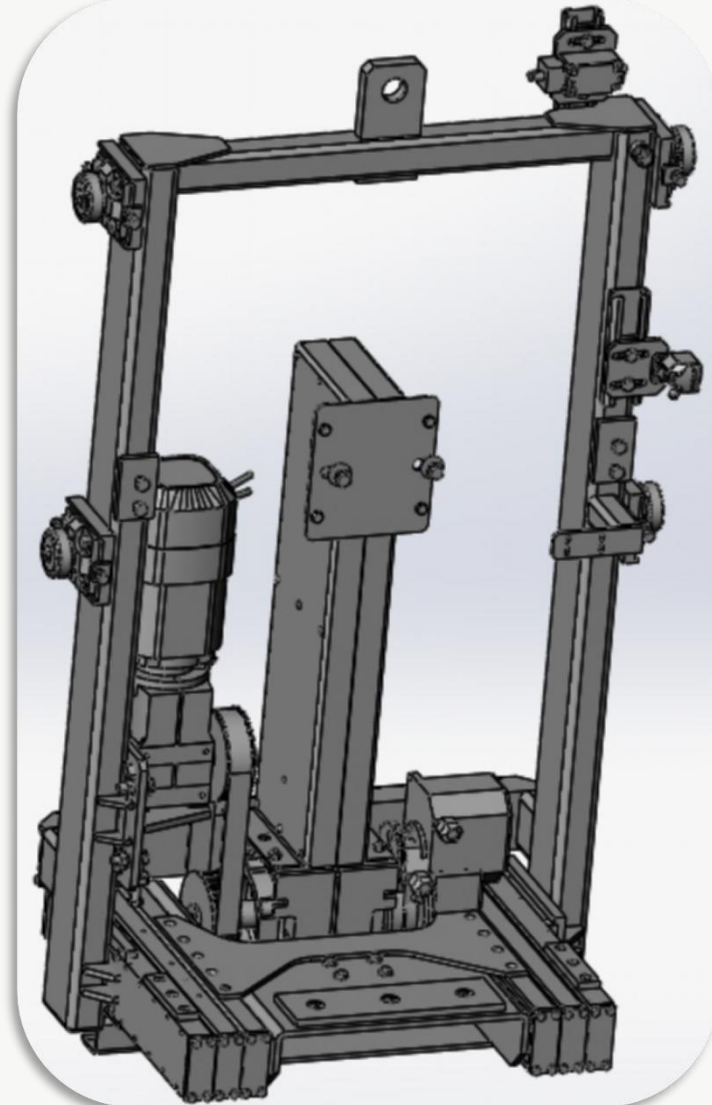
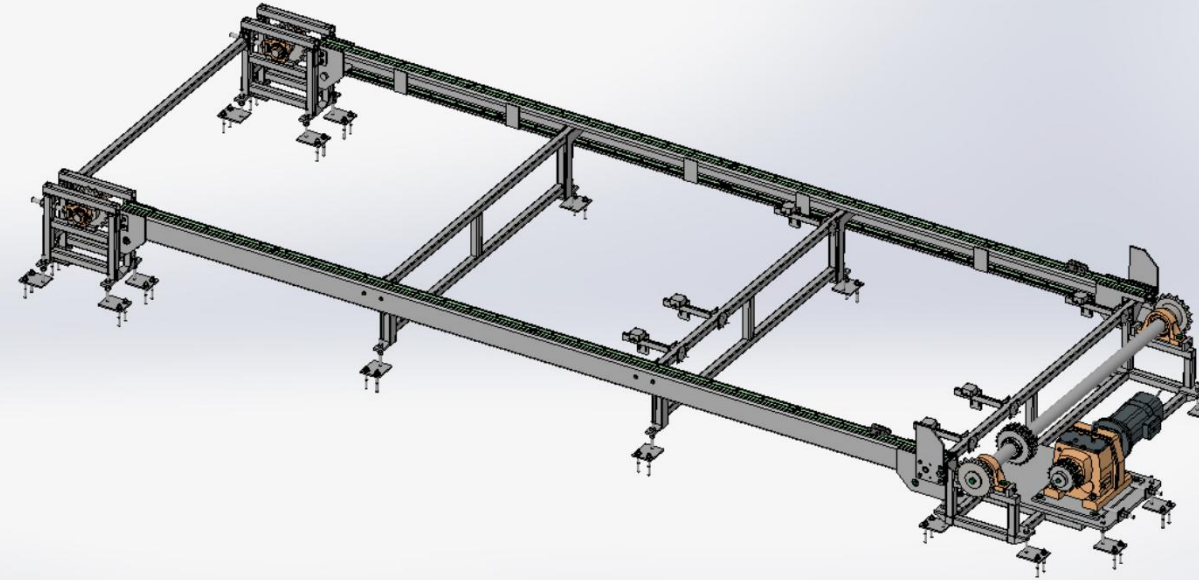
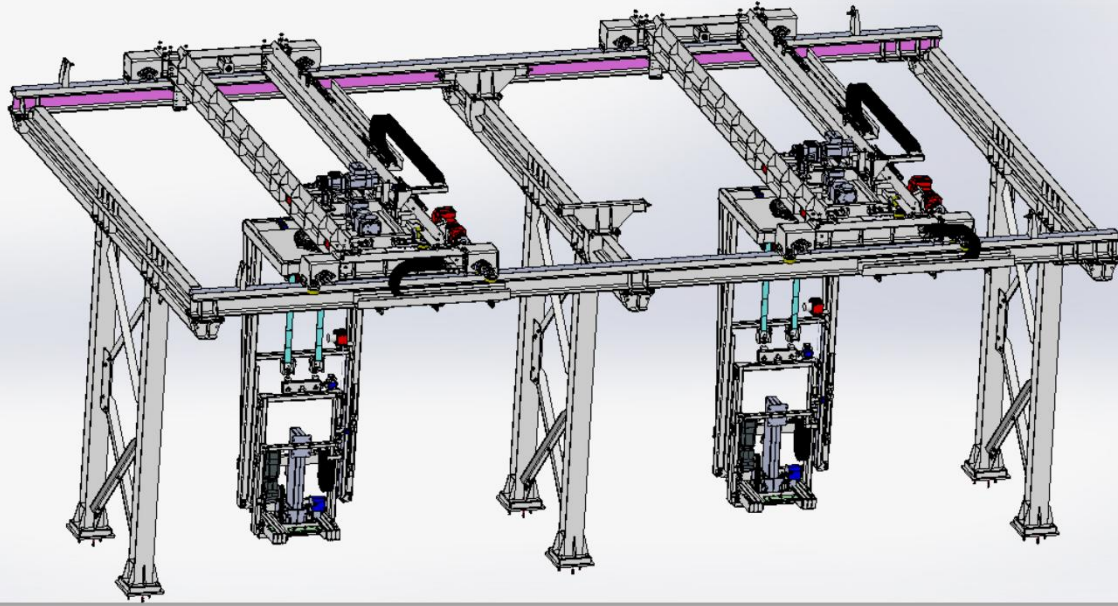
PROJECTS

PROJECTS AND DESIGN AND MANUFACTURE Mounting Fixture - Airflow Pipe Systems



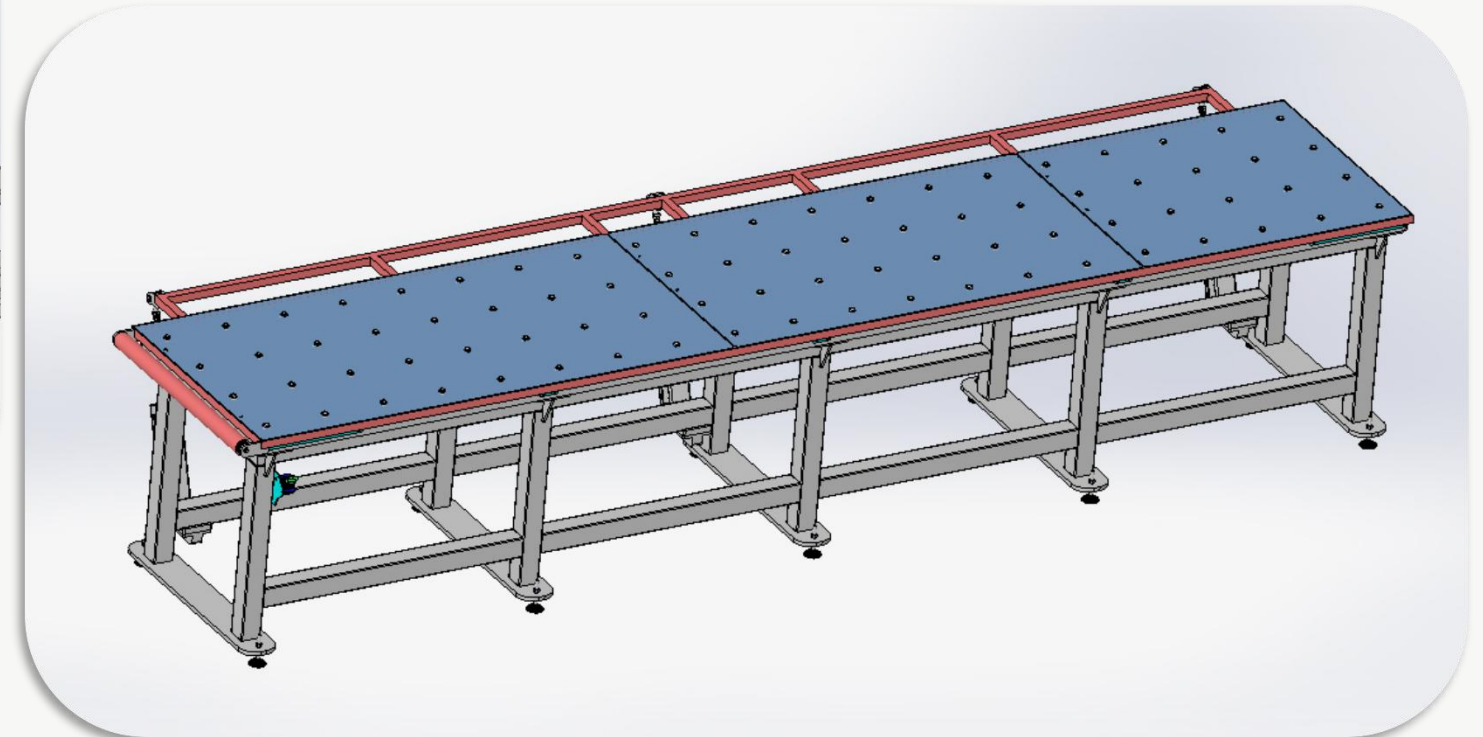
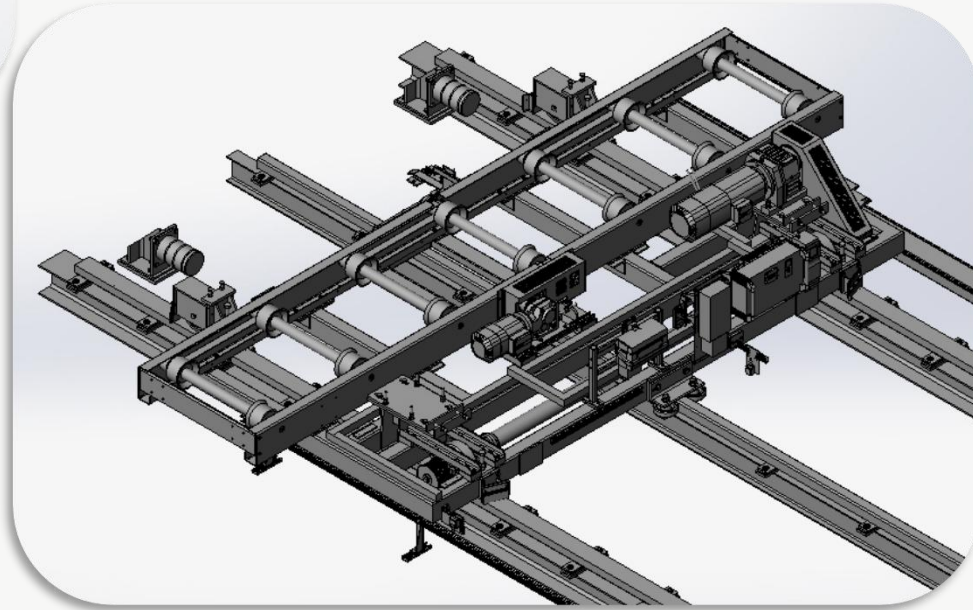
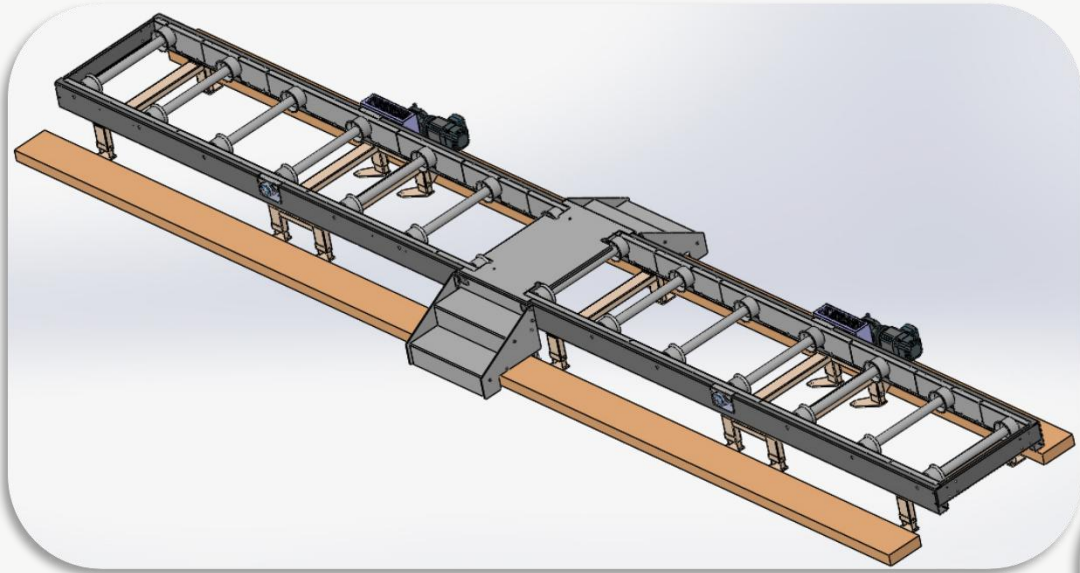
PROJECTS

PROJECTS AND DESIGN AND MANUFACTURE Transfer Systems - Lifting Systems



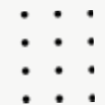
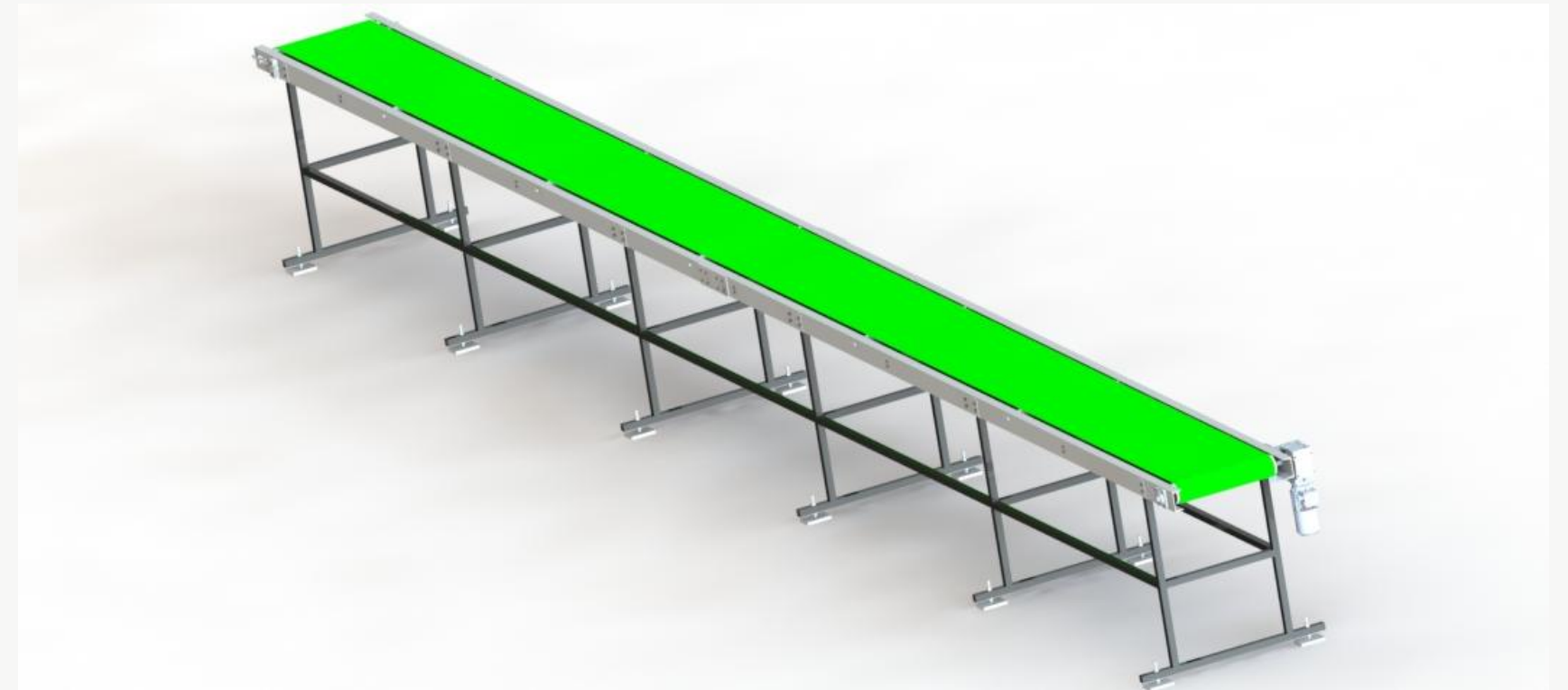
PROJECTS

PROJECTS AND DESIGN AND MANUFACTURE Conveyor Systems



PROJECTS

PROJECTS AND DESIGN AND MANUFACTURE Conveyor Systems



REFERENCES

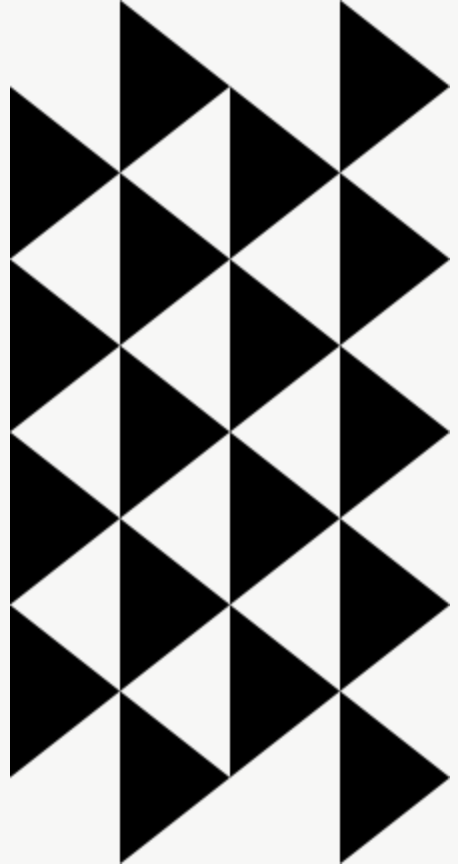
ANADOLU ISUZU

BMC POWER

sarkuysan



CONTACT



542 459 06 92

www.maribormuhendislik.com

mustafa.ercan@rmaribormuhendislik.com

HacıHalil Halil Mh. 1207 Sk.

No:1/5 Gebze-Kocaeli

Match Office