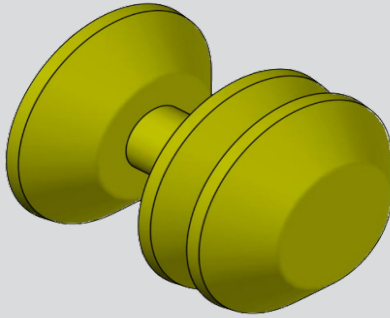


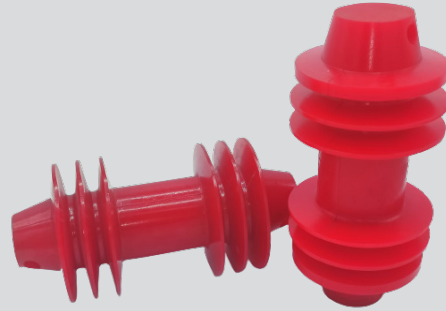
# SOLID CAST PIG DATA SHEET

Middle East Manufacture of Pipe Cleaning  
Equipment

## SOLID CAST PIG



Solid Cast Cup Pig



Solid Cast Batching Pig

### General Information

Solid Cast Pig which has a flexibility and easy handling of foam pigs, coupled with the ruggedness and excellent sealing capabilities of cups and discs found on steel pig types for small pipeline sizes.

Solid Cast Polyurethane does the same job of steel pigs but with some differences and benefits as its more flexible, lighter weight, covers a shorter distance. Solid cast polyurethane can negotiate min bend radius of 1.5D bends.

## Specific to Pipelines

Size Range: 2” – 56” Nominal Diameter  
 Bore Passing: Up to 20% Bore Restrictions  
 Minimum Bend Radius: 1.5D  
 Materials: Polyurethane with Shore A Hardness – 65° to 85°  
 Accessories: Circular Brushes - Magnets.

## Polyurethane Properties

Property	Test Method	Value	Value
Shore A Hardness	BS2782 365B	65	75°
100% Modulus (MN/m <sup>2</sup> )	BS903 PT A2	2.4	4.0
300% Modulus (MN/m <sup>2</sup> )	BS903 PT A2	4.6	8.5
Tensile Strength (MN/m <sup>2</sup> )	BS903 PT A2	30	38
Elongation at Break (%)	BS903 PT A2	554	544
Angle Tear Strength (KM/m)	BS903 PT A3	46	72
Compression Set 22hrs @70°	ASTM D395	45	45
Resilience (%)	BS903 PT A8B	50	45
Taber Abrasion/H22 (mgLoss)	BS903 PT A9D	<10	<10
DIN Abrasion (mm <sup>3</sup> loss)	DIN 53516	18	21



Abu Dhabi - UAE  
ICAD 3 - Musaffah  
P.O.BOX: 52844  
Tel: +971-2-5558303  
Fax: +971-2-5558304  
Email: [info@mempce.com](mailto:info@mempce.com)  
Website: [www.mempce.com](http://www.mempce.com)