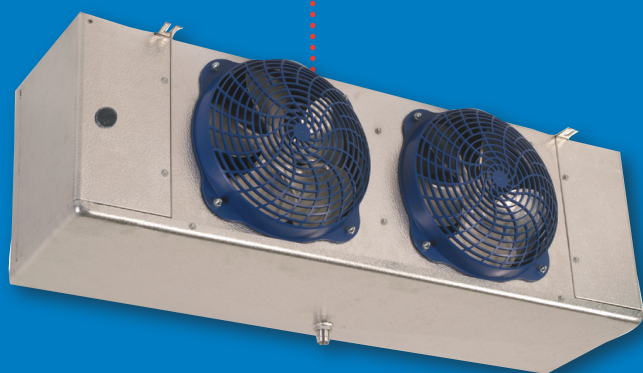
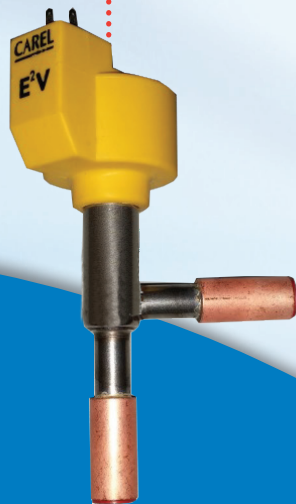


# Quick Response Controller

## Powered by Heatcraft

The Heatcraft Quick Response Controller is a factory installed and tested control solution that provides automatic superheat and intelligent defrost control for refrigeration unit coolers. Utilizing innovative, state-of-the-art technologies, the Quick Response Controller delivers reliable operation and system performance while saving energy compared to traditional electro-mechanical refrigeration controls.



The company behind the brands you trust.

# BOHN

**NOTE:** Heatcraft offers additional units with mounted TXVs only, as well as other manufacturer components upon request.

## FACTORY INSTALLED AND TESTED

### Ease of Installation

- Pre-assembled controls package
- No installing or connecting components
- Reduced time and effort required for installation
- System will work optimally out of the box

### Stand Alone

- No low voltage wiring between condensing unit and evaporator
- Complexity and volume of electrical wiring decreased
- Faster installations and easier troubleshooting

### Built by Experts

- Same technical expertise used to design refrigeration equipment and the controls
- Precise engineering and systems integration allow for optimal performance

## RAPID RESPONSE – ELECTRONIC EXPANSION VALVE (EEV)

### Improved Temperature Control

- Designed to maintain product or process temperatures within a specific range
- EEV's will allow system to reach optimal conditions faster
- Greater control over system temperatures

### Precise

- Traditional thermostatic expansion devices (TXV's) take time and expertise to properly setup
- Ideal settings already exist in the algorithm with an EEV
- Select the desired superheat and refrigerant type, the controller will automatically make necessary adjustments

### Rapid

- Achieving and maintaining ideal superheat ensures equipment responds rapidly following compressor startup
- Refrigeration systems that balance out quickly, adapt to changing conditions faster

## INTELLIGENT DEMAND DEFROST

### Intelligent

- Many years of experience and knowledge harnessed to develop the Heatcraft Quick Response Controller
- Result is a controller that's ready to analyze and adapt to constantly changing conditions

### Demand Defrost

- Continuously evaluating system parameters, pressures, temperatures and valve position
- Executes a defrost cycle only when actual conditions warrant
- Results in overall energy savings, more consistent box temperatures and improved product integrity

## EC Motors

Air Defrost, 115/1/60 Voltage	Electric Defrost, 208-230/1/60 Voltage
Model Number	Model Number
ADT040AEQRC6K	LET035BEQRC6K
ADT052AEQRC6K	LET040BEQRC6K
ADT065AEQRC6K	LET047BEQRC6K
ADT070AEQRC6K	LET065BEQRC6K
ADT090AEQRC6K	LET075BEQRC6K
ADT104AEQRC6K	LET090BEQRC6K
ADT120AEQRC6K	LET120BEQRC6K
ADT130AEQRC6K	LET140BEQRC6K
ADT140AEQRC6K	LET160BEQRC6K
ADT156AEQRC6K	LET180BEQRC6K
ADT180AEQRC6K	LET200BEQRC6K
ADT208AEQRC6K	LET240BEQRC6K
ADT260AEQRC6K	LET280BEQRC6K
ADT312AEQRC6K	
ADT370AEQRC6K	



# BOHN

The company behind the brands you trust.

2175 West Park Place Blvd. • Stone Mountain, GA 30087

Phone: 800.537.7775 Fax: 770.465.5900

[heatcraftcpd.com](http://heatcraftcpd.com)

HC-BN-QRC-SF