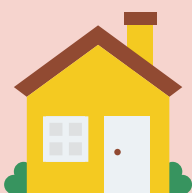




Celebrant

vs

Church



Venue

Anywhere!



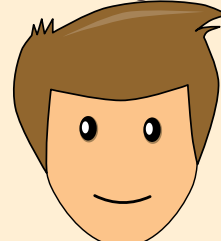
Venue

Registered religious setting (for same sex weddings, this needs to be a church which has approval for same sex marriages not inc Anglican churches)



A friendly face

Same celebrant throughout wedding planning process



A friendly face

Potential to know minister through church attendance



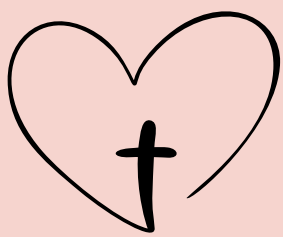
Wording Input

Completely bespoke wording for wedding ceremony based upon couple



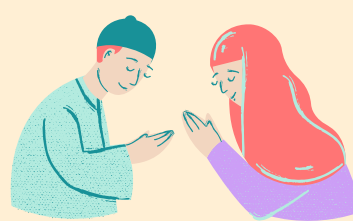
Wording Input

Fixed marriage vows



Religion

Can be incorporated if wanted



Religion

Completely religious



Ritual

Choice of rituals to be included



Rituals

Rituals not usually included