



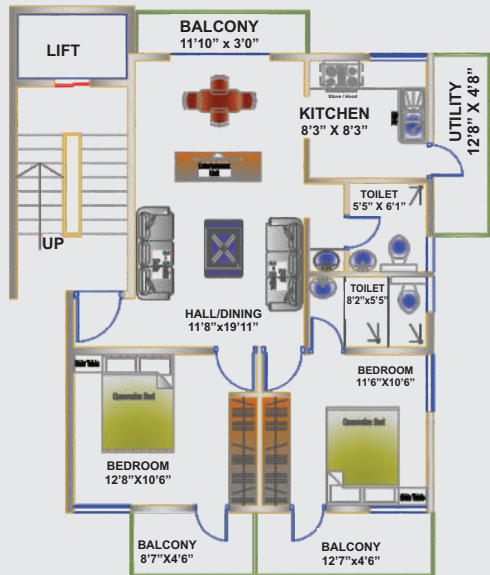
SreeReddy Properties Pvt. Ltd.

#12/2, Ground Floor, 2nd Main, Gopal Reddy Layout,
Dodda Banaswadi, Bangalore - 560 043

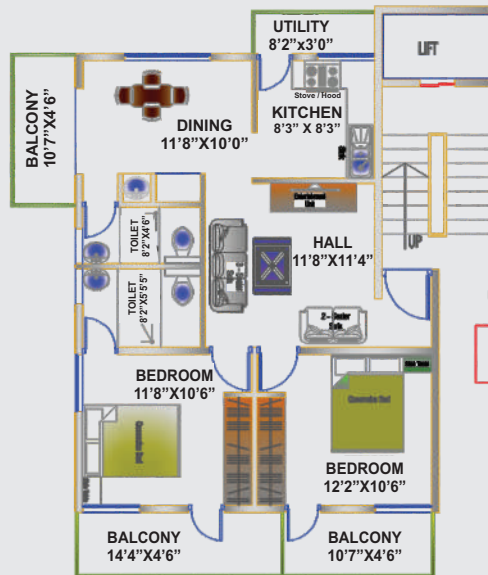
Ph: +91 80 3221 1112 Fax: +91 80 2542 4647

Mobile: 98809 77703, Email: sirish@sreeredygroup.com

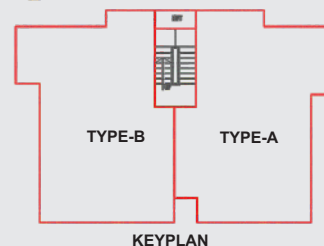
www.sreeredygroup.com



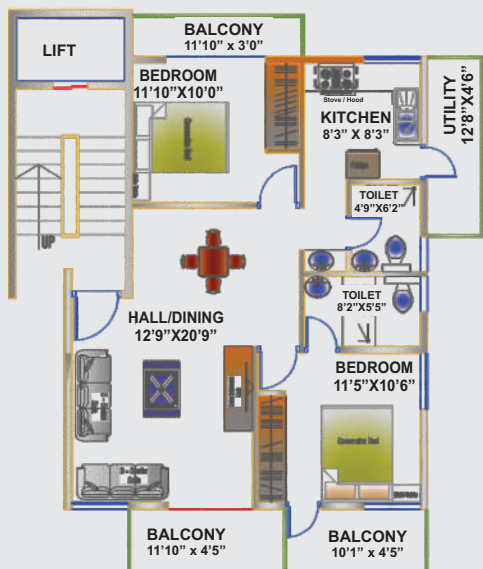
TYPE A
BUILT UP AREA -931.60 sqft
SUPER BUILT AREA- 1119.00sqft



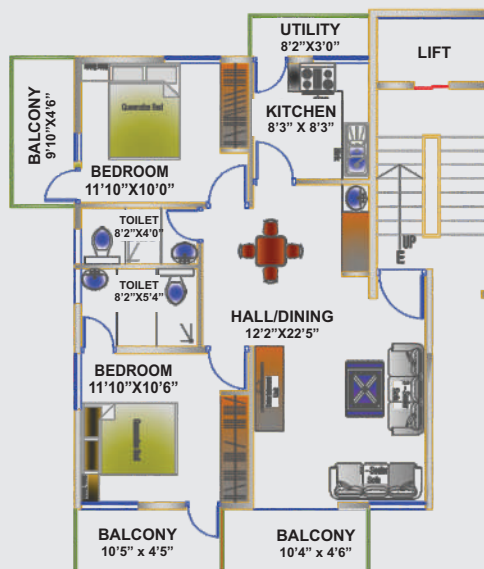
TYPE B
BUILT UP AREA -930.41 sqft
SUPER BUILT AREA- 1117.00sqft



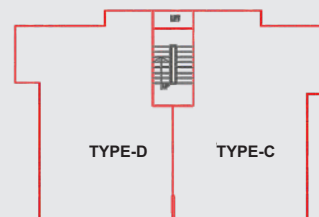
KEYPLAN



TYPE C
BUILT UP AREA -931.60 sqft
SUPER BUILT AREA- 1119.00sqft



TYPE D
BUILT UP AREA - 913.00 sqft
SUPER BUILT UP AREA - 1100.00SQFT



KEYPLAN



Amenities:

- ❖ Lift (Upto Terrace)
- ❖ Reserved Parking
- ❖ 100% Power Back up for common area and fully for homes
- ❖ 24 hrs Water Supply
 - ☆ Cauvery Water
 - ☆ Borewell Water
 - ☆ Automatic water filling system for overhead tanks and sumps.
 - ☆ Different pipeline system for Cauvery and Borewell water to home.
- ❖ 24 Hour Security
- ❖ Intercom Facility
- ❖ Car Wash Facility
- ❖ Toilet Facilities for car Drivers in the Basement Floor

Advantages:

- ❖ Red Bricks construction
- ❖ Fully Vitrified flooring
- ❖ 24 hours back for full house and common area
- ❖ Customize on - Plan, Tiles Color, Electrical Points, Switches. etc.
- ❖ Good cross ventilation in the flat, all corner flats.
- ❖ Points for Instant water filter, instant geyser, electric chimney , washing machine, Electrical point for split AC in 2 bedrooms , exhaust and Sufficient points are provided.
- ❖ Lightning protection system in accordance with Indian standards.

SPECIFICATIONS

General:

- ❖ Structure as per standards using torsteel approved steel and M20 or equivalent ready mix concrete.
- ❖ Wall using 6" thick cement solid Blocks or Red bricks
- ❖ Terrace – Waterproofing with cement mortar mixer with waterproof chemicals.
- ❖ Basement, Pathways and driveways finished with pavement blocks concrete or cement flooring

Flooring:

- ❖ In Living & Dining , Bedrooms and Kitchen 2' x 2' Vitrified Tiles.
- ❖ In lobby and staircase 24" x 36" , 20 mm thick granite.
- ❖ Bathroom 12" x 12" anti skid ceramic tiles for floor.
- ❖ 8" x 12" printed ceramic tiles for walls upto 7 feet.

Kitchen:

- ❖ 20mm Black granite platform of 2 feet width with stainless sink and drain board.
- ❖ 8 x 6 printed ceramic tiles up to height of 2 feet.

Doors:

- ❖ Main Door - Wall thickness door frame with elegant teak panel shutter and 7 feet height door
- ❖ Other Door - Wooden frame door with molted panel door
- ❖ Toilet Door - Flush door commercial painted
- ❖ Kitchen Door- Flush door commercial painted

Windows:

3 track powder coated aluminum framed windows with clear glass & provision for mosquito mesh with designed painted grills.

Fixtures:

- ❖ Brass hardware for main door
- ❖ Brushed steel hardware for other doors
- ❖ MS hardware for toilet doors
- ❖ Jaguar fittings for hot and cold mix and shower
- ❖ Hindware sanitary fittings for commode and wash basin.
- ❖ Modular switches

Electrical:

All electrical switches of anchor or equivalent make. Writing of standard specifications using copper multi stand cables as required.

Sanitary/ Plumbing :

Sanitary pipes, plumbing pipes and rain water pipes of suitable thickness for 6 kg pressure. Outlet pipes laid using stoneware pipes of 9' dia up to septic tank as per the plan of the sanitary consultants.

Other:

- ❖ Provision for Chimney & exhaust
- ❖ Plumbing materials of ISI grade
- ❖ Suspended pipelines in toilet with false ceiling
- ❖ Painting External emulsion for external walls
- ❖ Acrylic emulsion for internal walls
- ❖ Enamel for MS grill
- ❖ Electrical point for split AC in 2 bedrooms, TV & telephone points in all bedrooms and living room and Sufficient points are provided
- ❖ Individual metering for each flat
- ❖ Lightning protection system in accordance with Indian standard
- ❖ Granite/Marble flooring & cladding on ground floor lobby
- ❖ Waterproofing in terrace, bathroom, kitchen & balcony





PLACE	DISTANCE In Kms
Metro Station (BMRCL)	2.5
K R Puram Railway Station	2.5
International Airport	25
I T C Info Tech , Coxtown	4
Outer Ring Road (Banasawadi to New Airport)	0.4
M G Road	7
Cantonment Railway Station	6
Indira Nagar	6

Schools & Colleges:

Royal Concorde International Schools , New Baldwin Residential School , New Baldwin Residential College , BET College , CMR National Institutions (Public School, P U College, Management Studies, Nursing, Physiotherapy, Law school), Delhi Public School, Indo Asian Academy group of Institutions, Maruthi Vidyalaya..

Banks:

HDFC, ICICI, SBI , SBM, SBT, Bank of India, Bank of Baroda, Federal Bank ,Axis Bank, Indian Bank, Indian Overseas Bank, Andhara Bank, Union Bank of India.

Hotels:

Bhagini Restaurant, Tamarind Restaurant, Nandhini Deluxe Bar, Sreenidhi Upahar, Uttam Sagar , Hotel Little Imperial, Hotel Digchi.

Hospitals:

Amrik Nethralaya Super Speciality Hospital, Asha Nursing Home, Rasi Diagnostic Center, Pranav Hospital, Pruthvi Diabetes Center.