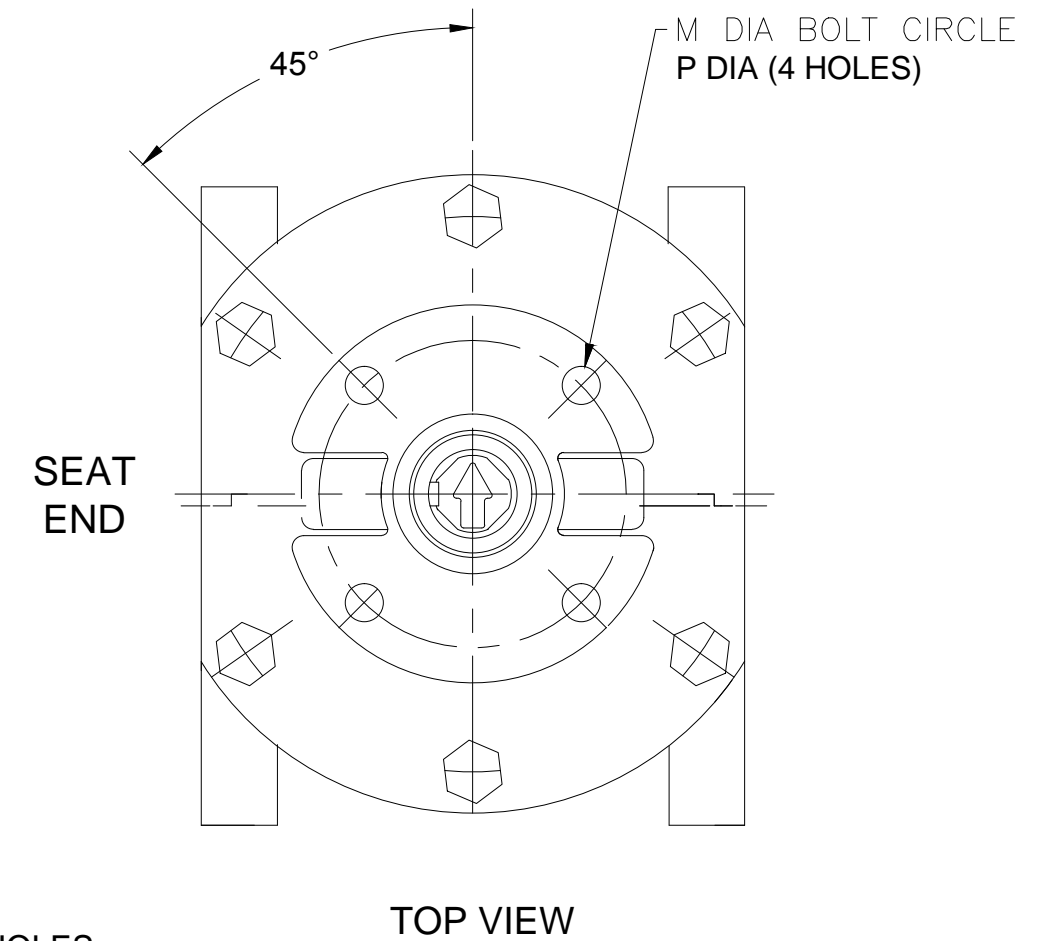
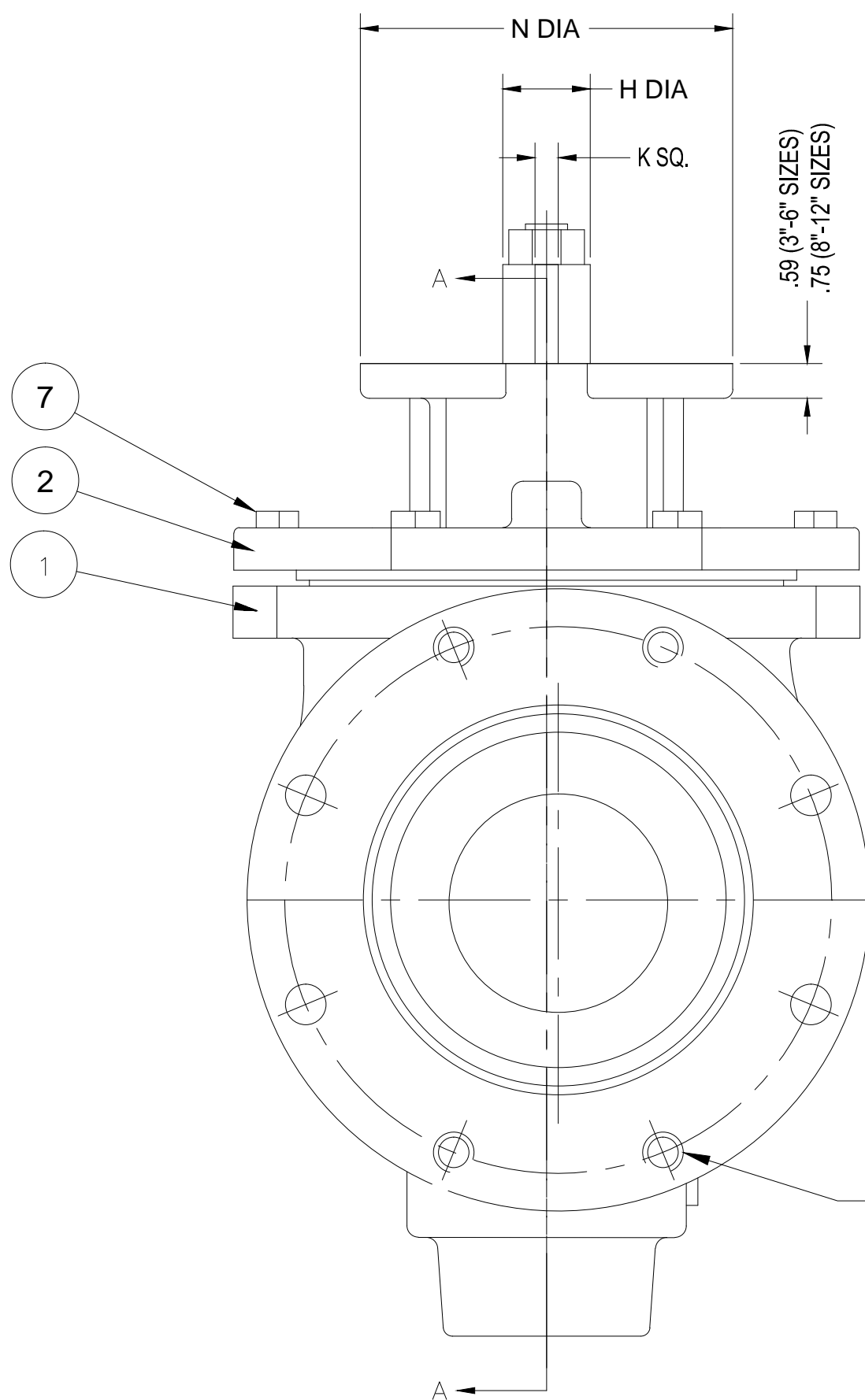
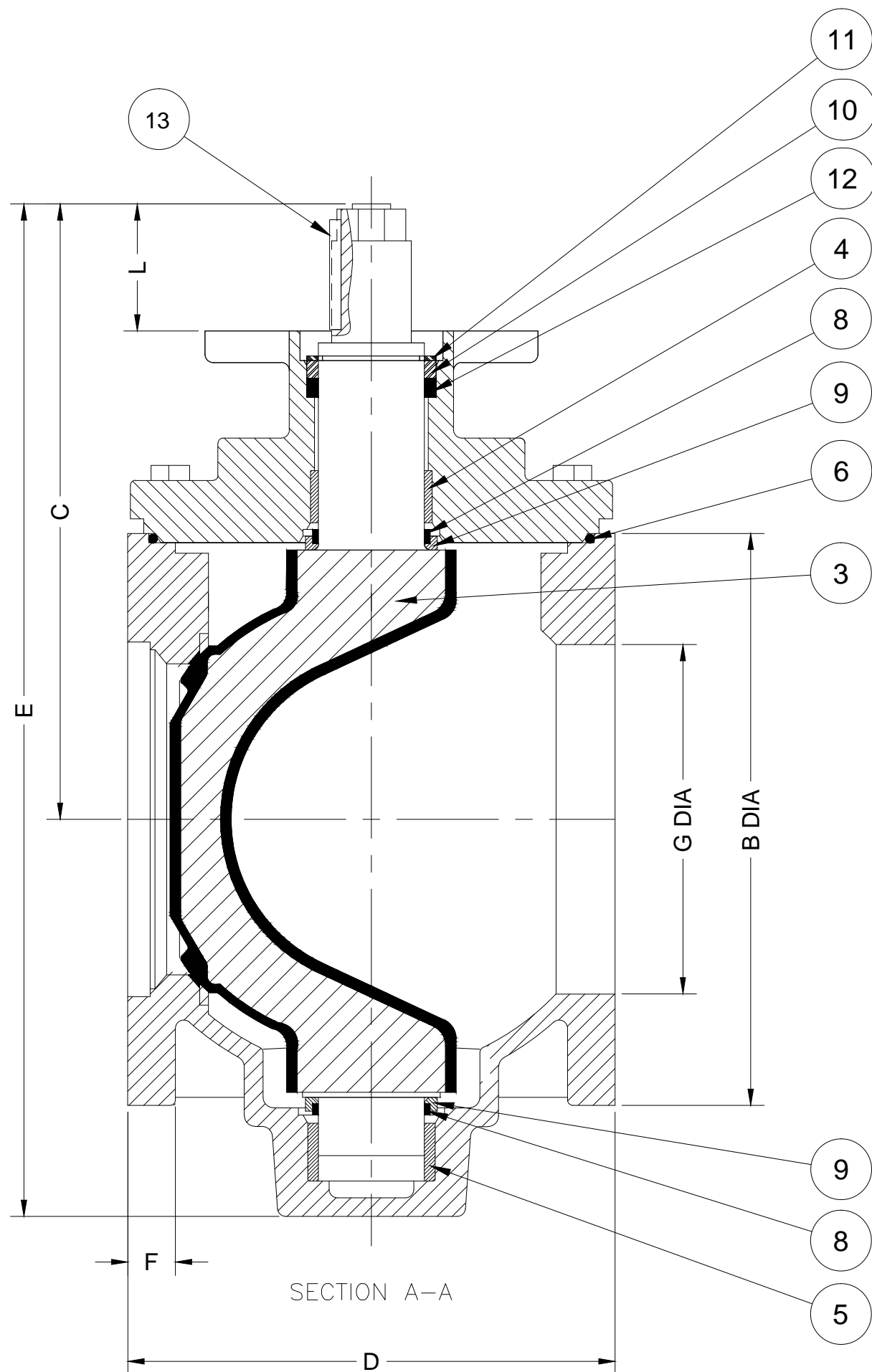


VALVE DIMENSIONS

SIZE	B DIA		C		D		E		F		G DIA		H DIA		K SQ.		L		M DIA		N DIA		P DIA		NO. OF TAPPED HOLES	WEIGHT IN LBS.
	IN.	MM	IN.	MM	IN.	MM	IN.	MM	IN.	MM	IN.	MM	IN.	MM	IN.	MM	IN.	MM	IN.	MM	IN.	MM	IN.	MM		
3"	7.52	191	8.38	213	8.00	203	12.94	329	0.75	19	3.19	81	1.125	29	0.25	6.35	1.75	45	4.95	126	6.00	152	0.563	14	0	43
4"	9.02	229	10.22	260	9.00	229	16.16	410	0.94	24	4.25	108	1.625	41	0.38	9.65	2.63	67	4.95	126	6.00	152	0.563	14	2	80
6"	10.98	279	11.50	292	10.50	267	18.25	464	0.98	25	6.26	159	1.625	41	0.38	9.65	2.63	64	4.95	126	6.00	152	0.563	14	2	120
8"	13.50	343	14.53	369	11.50	292	23.91	607	1.12	28	8.27	210	1.875	48	0.50	12.7	3.00	76	6.50	165	8.00	203	0.810	21	4	222
10"	15.98	406	17.00	432	13.00	330	27.50	699	1.18	30	10.23	260	2.250	57	0.50	12.7	4.12	107	6.50	165	8.00	203	0.810	21	4	314
12"	19.01	483	18.41	468	14.00	356	29.47	749	1.26	32	12.20	310	2.250	57	0.50	12.7	4.12	105	6.50	165	8.00	203	0.810	21	4	415

- NOTES:
 1. FLANGE DRILLING PER ANSI B16.1 CLASS 125
 2. IN COMPLIANCE WITH AWWA C517
 3. COLD WORKING PRESSURE: 175 PSI
 4. HYDROSTATIC TEST PRESSURE: 265 PSI

PARTS LIST	
NO.	Description
1	Body
2	Cover
3	Plug
4	Cover Bearing
5	Body Bearing
6	Cover O-Ring
7	Cover Bolts
8	Grit Excluder Seal
9	Thrust Bearing
10	Bushing
11	Retaining Ring
12	Packing
13	Key



DIMENSIONS IN INCHES
 STANDARD TOLERANCES (UNLESS OTHERWISE NOTED):
 X = ±1
 XX = ±0.1
 XXX = ±0.005
 FRACTIONS = ±1/64
 ANGLES = ±1°
 DRAFTS: 3° MAX
 PER ANSI Y14.5M GD&T-3/32 FLATNESS, ROUNDNESS, POSITION

GA INDUSTRIES, LLC
 3" - 12" ECO-CENTRIC PLUG VALVE
 ANSI 125 LB FLANGES

BREAK SHARP EDGES
 SERIAL NO. DRAWN BY HGM
 FIG. NUMBER 517 APPR. BY JT
 DATE 09-28-2009 SCALE NTS
 PROPERTY OF GA INDUSTRIES, LLC
 REFERENCES FILE DRAWING NO. REV.
 PL PL-1010 B

REV.	DESCRIPTION	DATE	BY
B	PART #2 WAS #3; PART #3 WAS #2	07-23-2014	BRF
A	PART #12 WAS U-CUP SEAL	01-14-2014	BRF

J:\AUTOCAD\PLUG\PL-SHOW\PL-1010-B.DWG