

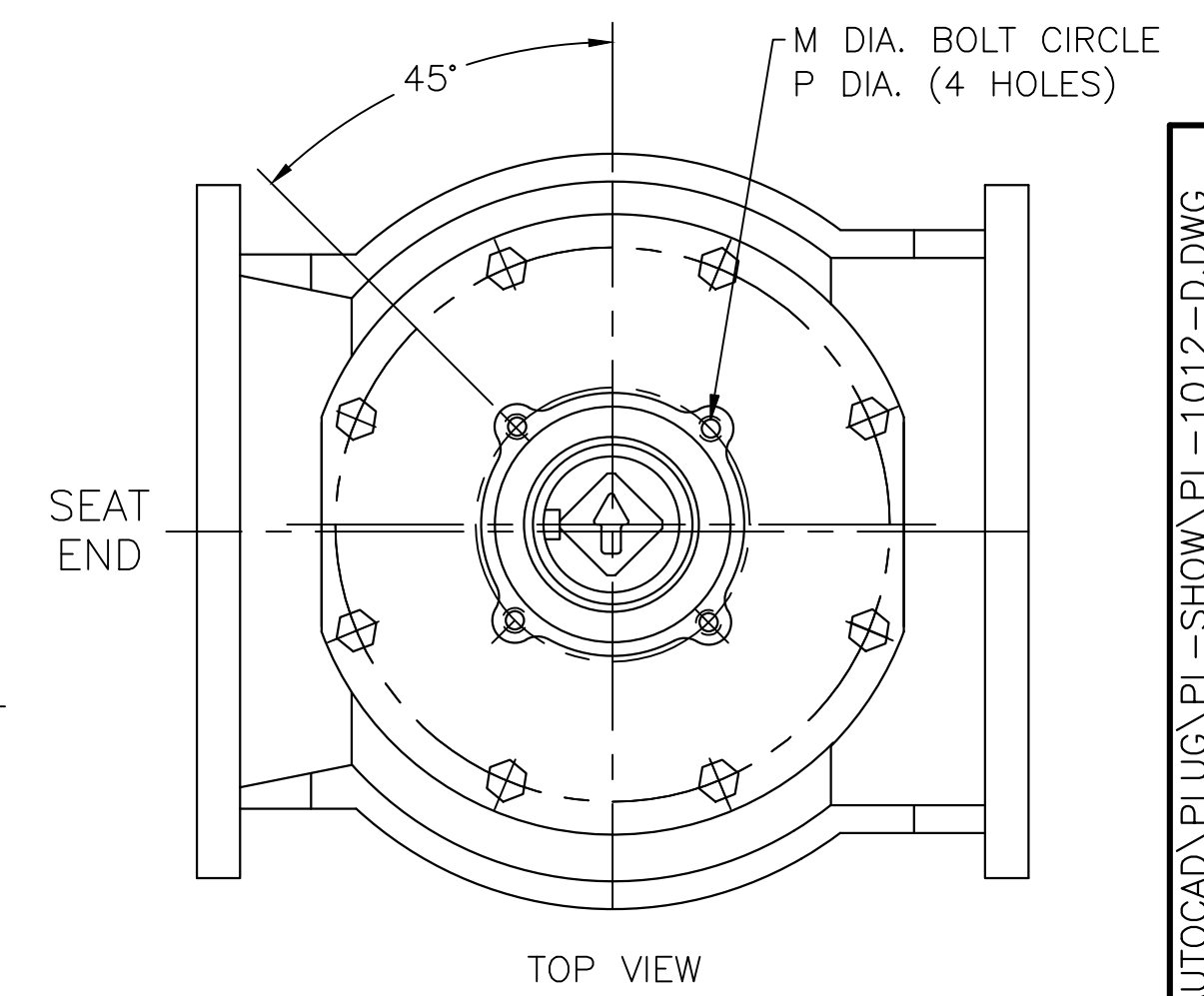
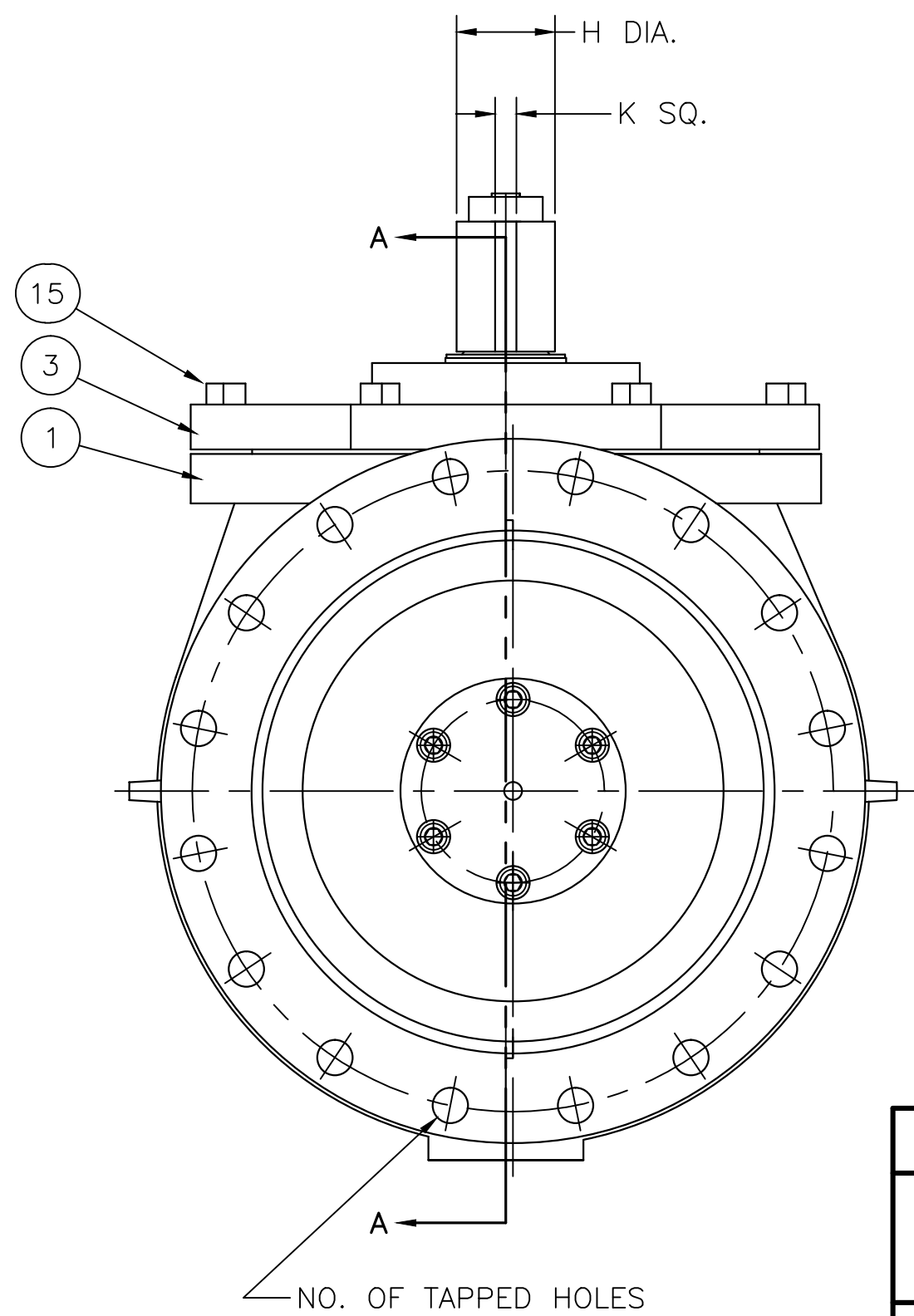
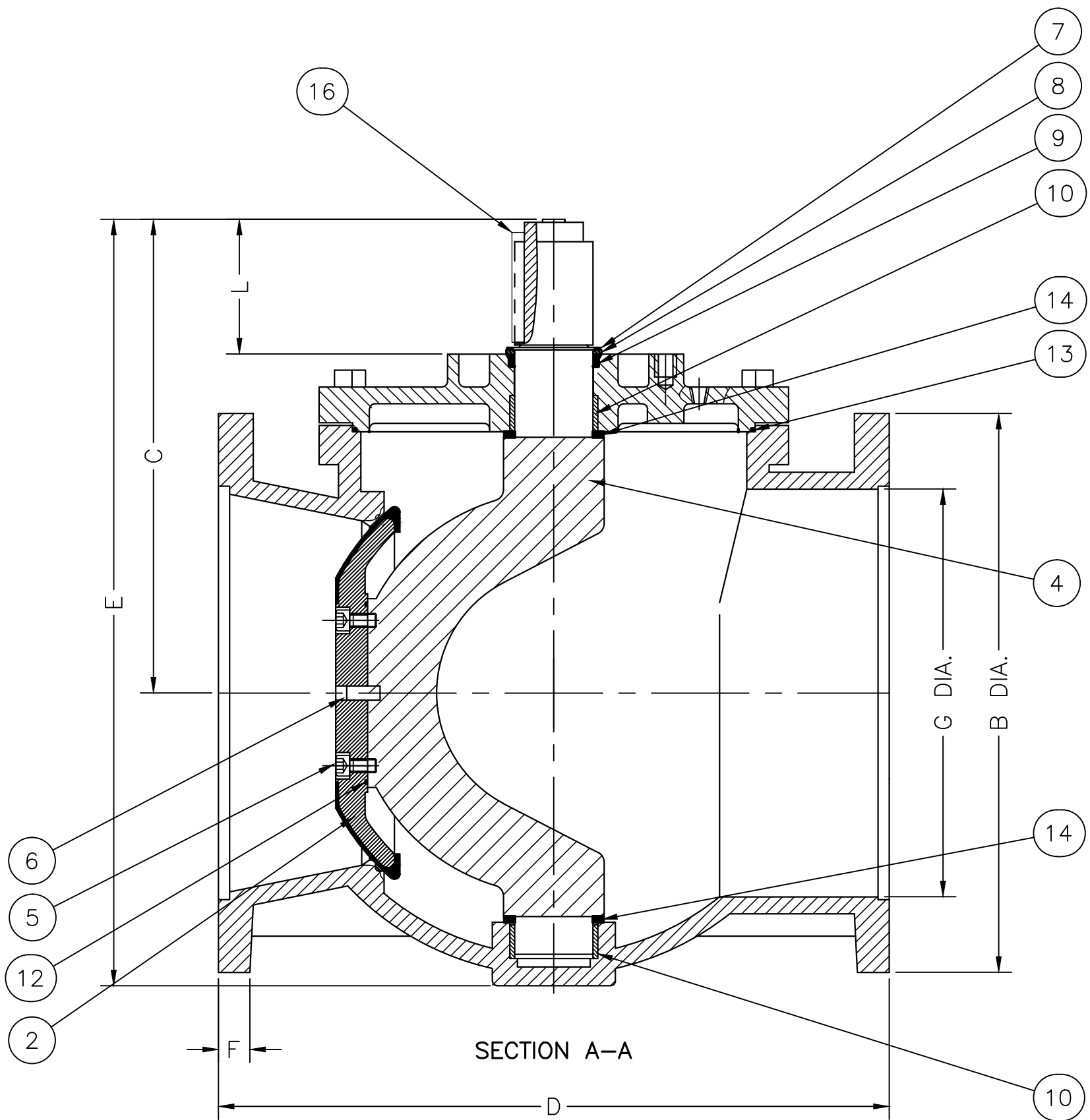
VALVE DIMENSIONS

SIZE	B DIA.		C		D		E		F		G DIA.		H DIA.		K SQ.		L		M DIA.		P DIA.	NO. OF TAPPED HOLES/FLG	WEIGHT IN LBS.
	IN.	MM	IN.	MM	IN.	MM	IN.	MM	IN.	MM	IN.	MM	IN.	MM	IN.	MM	IN.	MM	IN.	MM	IN.		
14"	21.02	534	19.38	492	17.00	432	32.25	819	1.38	35	13.98	355	3.50	89	0.75	19	6.00	152	10.00	254	3/4-10UNC	4	575
16"	23.50	597	21.19	538	17.75	451	34.19	868	1.44	37	16.14	410	3.50	89	0.75	19	6.10	155	10.00	254	3/4-10UNC	4	768
18"	25.00	635	21.19	538	30.00	762	34.30	871	1.57	40	17.99	457	3.50	89	0.75	19	6.10	155	10.00	254	3/4-10UNC	0	1071
20"	27.52	699	24.00	610	36.00	914	41.00	1041	1.69	43	20.08	510	3.50	89	0.75	19	7.60	193	10.00	254	3/4-10UNC	4	1819
24"	32.01	813	24.00	610	42.00	1067	41.00	1041	1.90	48	24.21	615	3.50	89	0.75	19	7.60	193	10.00	254	3/4-10UNC	0	2018

NOTES:

1. FLANGE DRILLING PER ANSI B16.1 CLASS 125
2. IN COMPLIANCE WITH AWWA C517
3. COLD WORKING PRESSURE: 150 PSI
4. HYDROSTATIC TEST PRESSURE: 225 PSI

PARTS LIST	
ITEM NO.	DESCRIPTION
1	BODY
2	PLUG
3	COVER
4	SHAFT
5	PLUG SCREWS
6	PLUG PIN
7	RETAINING RING
8	THRUST RACE
9	U-CUP SEAL
10	BEARING
12	PLUG O-RING
13	COVER O-RING
14	GRIT EXCLUDER/THRUST BEARING
15	COVER BOLTS
16	KEY



**GA INDUSTRIES, LLC**

14"-24" ECO-CENTRIC PLUG VALVE  
ANSI 125 LB FLANGES

STANDARD TOLERANCES (UNLESS OTHERWISE NOTED) FINISHED SURFACES ONLY DIMENSIONS SHOWN IN INCHES .x = ±.02 .xx = ±.01 .xxx = ±.002 FRACTIONS ±1/64" ANGLES ±1° FINISH ♀- XX RMS	<b>SERIAL NO.</b> *	<b>SCALE</b> N.T.S.	<b>DRAWN BY</b> HGM
	<b>REFERENCES</b> *	<b>EFFECTIVE DATE</b> 08-07-2009 TO	<b>APPR. BY</b> JT
	<b>FIG. NUMBER</b> 517	<b>FILE</b> PL	<b>DRAWING NO.</b> PL-1012
			<b>REV.</b> D

REV.	DESCRIPTION	DATE	BY
D	*STEM NOW REFERRED TO AS "SHAFT" IN PARTS LIST	06/01/2012	SWR
C	ELIMINATED ITEM NO. 11 - PACKING	07/21/2011	SWR
B	UPDATED DWG. AS NECESSARY	07/14/2011	SWR
A	CHANGED BALLOONS	03/24/2010	RJT

J:\AUTOCAD\PLUG-PL-SHOW\PL-1012-D.DWG