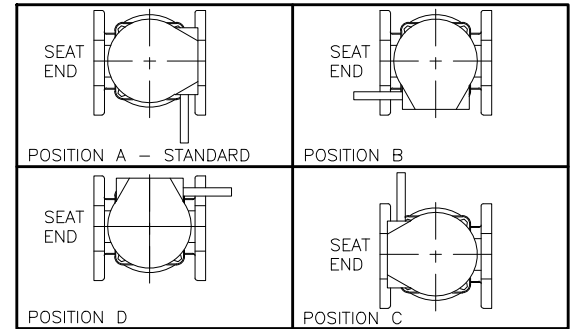
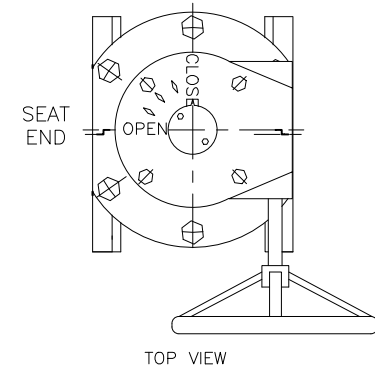
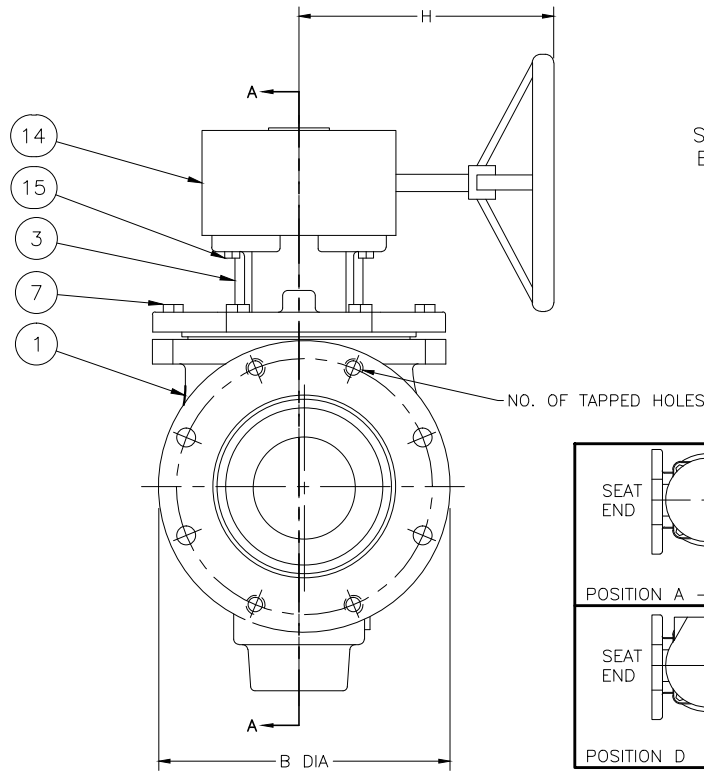
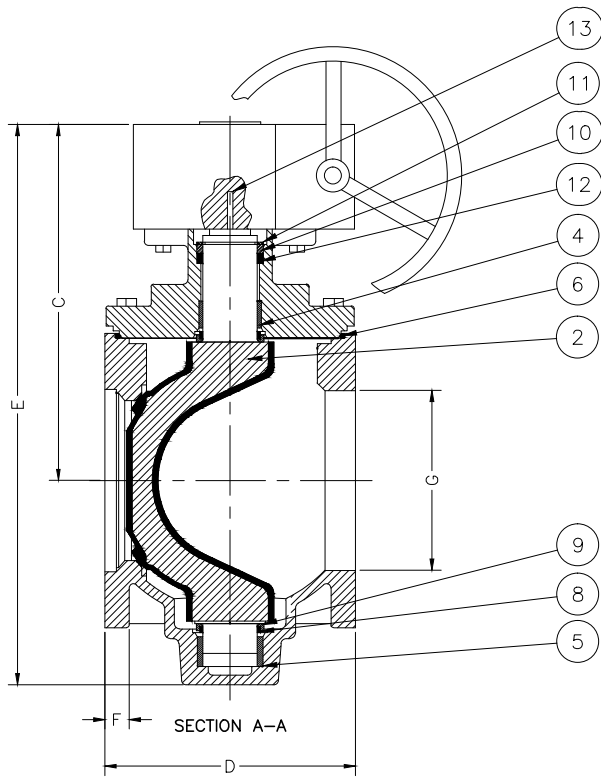


VALVE DIMENSIONS																
SIZE	B		C		D		E		F		G		H		NO. OF TAPPED HOLES	WEIGHT IN LBS.
	IN.	MM	IN.	MM	IN.	MM	IN.	MM	IN.	MM	IN.	MM	IN.	MM		
6"	10.98	279	12.36	314	10.50	267	19.13	486	0.98	25	6.26	159	9.45	240	2	150
8"	13.50	342	16.50	419	11.50	292	25.87	657	1.12	28	8.27	210	11.02	280	4	297
10"	15.98	406	17.76	451	13.00	330	28.26	717	1.18	30	10.23	260	11.02	280	4	386
12"	19.01	483	19.25	489	14.00	356	30.31	770	1.26	32	12.20	310	11.02	280	6	487

NOTES:

1. FLANGE DRILLING PER ANSI B16.1 CLASS 125
2. IN COMPLIANCE WITH AWWA C517
3. COLD WORKING PRESSURE: 175 PSI
4. HYDROSTATIC TEST PRESSURE: 265 PSI
5. ACTUATOR SUPPLIED IN POSITION A UNLESS SPECIFIED OTHERWISE



TOP VIEW

GA INDUSTRIES, LLC

6"-12" ECO-CENTRIC PLUG VALVE
WORM GEAR ACTUATOR W/HANDWHEEL
ANSI 125 LB FLANGES

STANDARD TOLERANCES (UNLESS OTHERWISE NOTED) FINISHED SURFACES ONLY DIMENSIONS GIVEN IN INCHES X = ±.02 XX = ±.01 XXX = ±.002 FRACTIONS 31/64" ANGLES 1/4" FINISH 0- XX RMS	SERIAL NO.	SCALE	DRAWN BY HGM	
	*	NTS	APPR. BY JT	
REFERENCES	EFFECTIVE DATE	07-17-2009 TO		
*	FIG. NUMBER	FILE	DRAWING NO.	REV.
	517	PL	PL-1004	A

REV.	DESCRIPTION	DATE	BY
A	ADDED WEIGHTS & CHANGED NOTE	03-24-2010	RJT

J:\AUTOCAD\PLUG\PL-SHOW\PL-1004-A.DWG